

PHILIPPINE BIDDING DOCUMENTS

(As Harmonized with Development Partners)

Government of the Republic of the Philippines

Province of Albay

CITY OF TABACO

Procurement of Infrastructure Projects

**CONSTRUCTION/REHABILITATION/
IMPROVEMENT OF VARIOUS PUBLIC
INFRASTRUCTURES
(ROADWAYS, RIVER CONTROL & FENCE),
VARIOUS BARANGAYS, TABACO CITY**

Contract ID No. 021-08-2022-INFRA

August 23, 2022

**Sixth Edition
July 2020**

TABLE OF CONTENTS

Glossary of Terms, Abbreviations, and Acronyms.....	4
Section I. Invitation to Bid	6
Section II. Instructions to Bidders.....	10
1. Scope of Bid.....	11
2. Funding Information	11
3. Bidding Requirements.....	11
4. Corrupt, Fraudulent, Collusive, Coercive, and Obstructive Practices	11
5. Eligible Bidders.....	11
6. Origin of Associated Goods	12
7. Subcontracts	12
8. Pre-Bid Conference.....	12
9. Clarification and Amendment of Bidding Documents.....	12
10. Documents Comprising the Bid: Eligibility and Technical Components	12
11. Documents Comprising the Bid: Financial Component	13
12. Alternative Bids	13
13. Bid Prices	13
14. Bid and Payment Currencies.....	13
15. Bid Security.....	14
16. Sealing and Marking of Bids.....	14
17. Deadline for Submission of Bids	14
18. Opening and Preliminary Examination of Bids	14s
19. Detailed Evaluation and Comparison of Bids	14
20. Post Qualification.....	15
21. Signing of the Contract	15
Section III. Bid Data Sheet.....	16
Section IV. General Conditions of Contract	19
1. Scope of Contract.....	20
2. Sectional Completion of Works	20
3. Possession of Site.....	20
4. The Contractor's Obligations	20
5. Performance Security	20
6. Site Investigation Reports	21
7. Warranty.....	21
8. Liability of the Contractor.....	21
9. Termination for Other Causes.....	21
10. Dayworks	21
11. Program of Work.....	21

12. Instructions, Inspections and Audits	22
13. Advance Payment.....	22
14. Progress Payments	22
15. Operating and Maintenance Manuals.....	22
Section V. Special Conditions of Contract.....	23
Section VI. Specifications	25
Section VII. Drawings.....	2652
Section VIII. Bill of Quantities	53
Section IX. Checklist of Technical and Financial Documents.....	61
Annex A. Forms and Templates	64

Glossary of Terms, Abbreviations, and Acronyms

ABC – Approved Budget for the Contract.

ARCC – Allowable Range of Contract Cost.

BAC – Bids and Awards Committee.

Bid – A signed offer or proposal to undertake a contract submitted by a bidder in response to and in consonance with the requirements of the bidding documents. Also referred to as *Proposal* and *Tender*. (2016 revised IRR, Section 5[c])

Bidder – Refers to a contractor, manufacturer, supplier, distributor and/or consultant who submits a bid in response to the requirements of the Bidding Documents. (2016 revised IRR, Section 5[d])

Bidding Documents – The documents issued by the Procuring Entity as the bases for bids, furnishing all information necessary for a prospective bidder to prepare a bid for the Goods, Infrastructure Projects, and/or Consulting Services required by the Procuring Entity. (2016 revised IRR, Section 5[e])

BIR – Bureau of Internal Revenue.

BSP – Bangko Sentral ng Pilipinas.

CDA – Cooperative Development Authority.

Consulting Services – Refer to services for Infrastructure Projects and other types of projects or activities of the GOP requiring adequate external technical and professional expertise that are beyond the capability and/or capacity of the GOP to undertake such as, but not limited to: (i) advisory and review services; (ii) pre-investment or feasibility studies; (iii) design; (iv) construction supervision; (v) management and related services; and (vi) other technical services or special studies. (2016 revised IRR, Section 5[i])

Contract – Refers to the agreement entered into between the Procuring Entity and the Supplier or Manufacturer or Distributor or Service Provider for procurement of Goods and Services; Contractor for Procurement of Infrastructure Projects; or Consultant or Consulting Firm for Procurement of Consulting Services; as the case may be, as recorded in the Contract Form signed by the parties, including all attachments and appendices thereto and all documents incorporated by reference therein.

Contractor – is a natural or juridical entity whose proposal was accepted by the Procuring Entity and to whom the Contract to execute the Work was awarded. Contractor as used in these Bidding Documents may likewise refer to a supplier, distributor, manufacturer, or consultant.

CPI – Consumer Price Index.

DOLE – Department of Labor and Employment.

DTI – Department of Trade and Industry.

Foreign-funded Procurement or Foreign-Assisted Project –Refers to procurement whose funding source is from a foreign government, foreign or international financing institution as specified in the Treaty or International or Executive Agreement. (2016 revised IRR, Section 5[b]).

GFI – Government Financial Institution.

GOCC –Government-owned and/or –controlled corporation.

Goods – Refer to all items, supplies, materials and general support services, except Consulting Services and Infrastructure Projects, which may be needed in the transaction of public businesses or in the pursuit of any government undertaking, project or activity, whether in the nature of equipment, furniture, stationery, materials for construction, or personal property of any kind, including non-personal or contractual services such as the repair and maintenance of equipment and furniture, as well as trucking, hauling, janitorial, security, and related or analogous services, as well as procurement of materials and supplies provided by the Procuring Entity for such services. The term “related” or “analogous services” shall include, but is not limited to, lease or purchase of office space, media advertisements, health maintenance services, and other services essential to the operation of the Procuring Entity. (2016 revised IRR, Section 5[r])

GOP – Government of the Philippines.

Infrastructure Projects – Include the construction, improvement, rehabilitation, demolition, repair, restoration or maintenance of roads and bridges, railways, airports, seaports, communication facilities, civil works components of information technology projects, irrigation, flood control and drainage, water supply, sanitation, sewerage and solid waste management systems, shore protection, energy/power and electrification facilities, national buildings, school buildings, hospital buildings, and other related construction projects of the government. Also referred to as *civil works or works*. (2016 revised IRR, Section 5[u])

LGUs – Local Government Units.

NFCC – Net Financial Contracting Capacity.

NGA – National Government Agency.

PCAB – Philippine Contractors Accreditation Board.

PhilGEPS - Philippine Government Electronic Procurement System.

Procurement Project – refers to a specific or identified procurement covering goods, infrastructure project or consulting services. A Procurement Project shall be described, detailed, and scheduled in the Project Procurement Management Plan prepared by the agency which shall be consolidated in the procuring entity's Annual Procurement Plan. (GPPB Circular No. 06-2019 dated 17 July 2019)

PSA – Philippine Statistics Authority.

SEC – Securities and Exchange Commission.

SLCC – Single Largest Completed Contract.

UN – United Nations.

Section I. Invitation to Bid



Republic of the Philippines
Province of Albay
CITY GOVERNMENT OF TABACO
Tabaco City

Bids and Awards Committee

Invitation to Bid for
Construction/Rehabilitation/Improvement of Various Public Infrastructures
(Roadways, River Control & Fence)
Various Barangays, Tabaco City
Contract ID No. 021-08-2022-INFRA

1. The *City Government of Tabaco*, through the *General Fund 2022 and 20% City Development Fund 2022* intends to apply the sum of *Forty-Two Million Five Hundred Thousand Pesos (Php 42,500,000.00)* being the Approved Budget for the Contract (ABC) to payments under the contract for the *Construction/Rehabilitation/Improvement of Various Public Infrastructures (Roadways, River Control & Fence), Various Barangays, Tabaco City under Contract ID No. 021-08-2021-INFRA*. Bids received in excess of the ABC shall be automatically rejected at bid opening.
2. The *City Government of Tabaco* now invites bids for the above Procurement Project. Completion of the Works is required *within 240 calendar days from receipt of Notice to Proceed*. Bidders should have completed a contract similar to the Project. The description of an eligible bidder is contained in the Bidding Documents, particularly, in Section II (Instructions to Bidders).
3. Bidding will be conducted through open competitive bidding procedures using non-discretionary “*pass/fail*” criterion as specified in the 2016 revised Implementing Rules and Regulations (IRR) of Republic Act (RA) No. 9184.
4. Interested bidders may obtain further information from the *City Government of Tabaco* and inspect the Bidding Documents at the address given below from *9:00 A.M. to 4:00 P.M.*
5. A complete set of Bidding Documents may be acquired by interested bidders on *August 23-September 12, 2022* from given address and website/s below *and upon payment of the applicable fee for the Bidding Documents*, pursuant to the latest Guidelines issued by the GPPB, in the amount of *Twenty-Five Thousand (P25,000.00)*. The Procuring Entity shall allow the bidder to present its proof of payment for the fees in person.
6. The *City Government of Tabaco* will hold a Pre-Bid Conference on *August 31, 2022, 2:00PM, BAC Conference Room, 2F Annex Bldg., Tabaco City Hall, Tabaco City*, which shall be open to prospective bidders.
7. Bids must be duly received by the BAC Secretariat through manual submission at the office address as indicated below on or before *9:00AM, September 12, 2022*. Late bids shall not be accepted.
8. All bids must be accompanied by a bid security in any of the acceptable forms and in the amount stated in **ITB** Clause 16.

9. Bid opening shall be on **September 12, 2022, 9:30AM** at the given address below. Bids will be opened in the presence of the bidders' representatives who choose to attend the activity.

10. **Other Necessary Information:**

Minimum PCAB License Category: General Engineering

Project Size Range: Roadways – Medium A

Minimum Manpower Requirements:

- 1 Project Manager
- 1 Project Engineer
- 1 Materials Engineer I
- 1 Geodetic Engineer
- 10 Construction Foreman
- 2 Safety Officer
- 10 First Aider
- 40 Skilled Laborer
- 70 Common Laborer

Minimum Equipment Required:

- 1 unit Aircompressor with Jackhammer
- 1 unit Total Station, including accessories
- 1 unit Jackhammer with Generator
- 1 unit Welding Machine with Generator
- 1 unit Backhoe, wheel type
- 3 units Plate Compactor
- 3 units Concrete Saw
- 8 units One-Bagger Concrete Mixer
- 5 units Bar Cutter/Bender
- 1 unit Road Roller, Vibratory, Single Smooth Drum
- 1 unit Road Grader, 140Hp/G710A
- 1 unit Backhoe, crawler type, 0.80cu.m
- 2 units Stake Truck
- 1 unit Self Loading Truck
- 5 units Concrete Vibrator
- 1 unit Water Tank Truck (1000 gals)
- Enough Handtools

11. The **City Government of Tabaco** reserves the right to reject any and all bids, declare a failure of bidding, or not award the contract at any time prior to contract award in accordance with Sections 35.6 and 41 of the 2016 revised Implementing Rules and Regulations (IRR) of RA No. 9184, without thereby incurring any liability to the affected bidder or bidders.

12. For further information, please refer to:

Atty. Jovito Bron Coderis, Jr.
BAC Chairman / City Legal Office
BAC Office / City Legal Office
2F Annex Bldg., Tabaco City Hall, Tabaco City
Email: [**bactabaco16@gmail.com**](mailto:bactabaco16@gmail.com)
Website: tabacocity.gov.ph

Engr. Roland B. Garcia
BAC TWG / OIC-GSO
General Services Office
2F Annex Bldg., Tabaco City Hall, Tabaco City

13. You may visit the following website:

For downloading of Bidding Documents: www.tabacocity.com.ph

August 23, 2022

(Sgd.)
ATTY. JOVITO BRON CODERIS, JR.
BAC Chairperson

Section II. Instructions to Bidders

1. Scope of Bid

The Procuring Entity, *City Government of Tabaco* invites Bids for the *Construction/Rehabilitation/Improvement of Various Public Infrastructures (Roadways, River Control & Fence), Various Barangays, Tabaco City under Contract ID No. 021-08-2022-INFRA.*

The Procurement Project (referred to herein as “Project”) is for the construction of Works, as described in Section VI (Specifications).

2. Funding Information

2.1. The GOP through the source of funding as indicated below for 2022 in the amount of *Forty-Two Million Five Hundred Thousand Pesos (Php 42,500,000.00)*

2.2. The source of funding is:
LGUs, the Annual or Supplemental Budget, as approved by the Sanggunian.

3. Bidding Requirements

The Bidding for the Project shall be governed by all the provisions of RA No. 9184 and its 2016 revised IRR, including its Generic Procurement Manual and associated policies, rules and regulations as the primary source thereof, while the herein clauses shall serve as the secondary source thereof.

Any amendments made to the IRR and other GPPB issuances shall be applicable only to the ongoing posting, advertisement, or invitation to bid by the BAC through the issuance of a supplemental or bid bulletin.

The Bidder, by the act of submitting its Bid, shall be deemed to have inspected the site, determined the general characteristics of the contracted Works and the conditions for this Project, such as the location and the nature of the work; (b) climatic conditions; (c) transportation facilities; (c) nature and condition of the terrain, geological conditions at the site communication facilities, requirements, location and availability of construction aggregates and other materials, labor, water, electric power and access roads; and (d) other factors that may affect the cost, duration and execution or implementation of the contract, project, or work and examine all instructions, forms, terms, and project requirements in the Bidding Documents.

4. Corrupt, Fraudulent, Collusive, Coercive, and Obstructive Practices

The Procuring Entity, as well as the Bidders and Contractors, shall observe the highest standard of ethics during the procurement and execution of the contract. They or through an agent shall not engage in corrupt, fraudulent, collusive, coercive, and obstructive practices defined under Annex “I” of the 2016 revised IRR of RA No. 9184 or other integrity violations in competing for the Project.

5. Eligible Bidders

5.1. Only Bids of Bidders found to be legally, technically, and financially capable will be evaluated.

5.2. The Bidder must have an experience of having completed a *Single Largest Completed Contract (SLCC)* that is similar to this Project, equivalent *to at least fifty percent (50%) of the ABC* adjusted, if necessary, by the Bidder to

current prices using the PSA's CPI, except under conditions provided for in Section 23.4.2.4 of the 2016 revised IRR of RA No. 9184.

A contract is considered to be "similar" to the contract to be bid if it has the major categories of work stated in the **BDS**.

- 5.3. For Foreign-funded Procurement, the Procuring Entity and the foreign government/foreign or international financing institution may agree on another track record requirement, as specified in the Bidding Document prepared for this purpose.
- 5.4. The Bidders shall comply with the eligibility criteria under Section 23.4.2 of the 2016 IRR of RA No. 9184.

6. Origin of Associated Goods

There is no restriction on the origin of Goods other than those prohibited by a decision of the UN Security Council taken under Chapter VII of the Charter of the UN.

7. Subcontracts

- 7.1. The Bidder may subcontract portions of the Project to the extent allowed by the Procuring Entity as stated herein, but in no case more than fifty percent (50%) of the Project.

The Procuring Entity has prescribed that subcontracting is not allowed.

- 7.1. Subcontracting of any portion of the Project does not relieve the Contractor of any liability or obligation under the Contract. The Supplier will be responsible for the acts, defaults, and negligence of any subcontractor, its agents, servants, or workmen as fully as if these were the Contractor's own acts, defaults, or negligence, or those of its agents, servants, or workmen.

8. Pre-Bid Conference

The Procuring Entity will hold a pre-bid conference for this Project on the specified date and time and either at its physical address as indicated in paragraph 6 of the **IB**.

9. Clarification and Amendment of Bidding Documents

Prospective bidders may request for clarification on and/or interpretation of any part of the Bidding Documents. Such requests must be in writing and received by the Procuring Entity, either at its given address or through electronic mail indicated in the **IB**, at least ten (10) calendar days before the deadline set for the submission and receipt of Bids.

10. Documents Comprising the Bid: Eligibility and Technical Components

- 10.1. The first envelope shall contain the eligibility and technical documents of the Bid as specified in **Section IX. Checklist of Technical and Financial Documents**.
- 10.2. If the eligibility requirements or statements, the bids, and all other documents for submission to the BAC are in foreign language other than English, it must be accompanied by a translation in English, which shall be authenticated by the appropriate Philippine foreign service establishment, post, or the

equivalent office having jurisdiction over the foreign bidder's affairs in the Philippines. For Contracting Parties to the Apostille Convention, only the translated documents shall be authenticated through an apostille pursuant to GPPB Resolution No. 13-2019 dated 23 May 2019. The English translation shall govern, for purposes of interpretation of the bid.

- 10.3. A valid PCAB License is required, and in case of joint ventures, a valid special PCAB License, and registration for the type and cost of the contract for this Project. Any additional type of Contractor license or permit shall be indicated in the **BDS**.
- 10.4. A List of Contractor's key personnel (e.g., Project Manager, Project Engineers, Materials Engineers, and Foremen) assigned to the contract to be bid, with their complete qualification and experience data shall be provided. These key personnel must meet the required minimum years of experience set in the **BDS**.
- 10.5. A List of Contractor's major equipment units, which are owned, leased, and/or under purchase agreements, supported by proof of ownership, certification of availability of equipment from the equipment lessor/vendor for the duration of the project, as the case may be, must meet the minimum requirements for the contract set in the **BDS**.

11. Documents Comprising the Bid: Financial Component

- 11.1. The second bid envelope shall contain the financial documents for the Bid as specified in **Section IX. Checklist of Technical and Financial Documents**.
- 11.2. Any bid exceeding the ABC indicated in paragraph 1 of the **IB** shall not be accepted.
- 11.3. For Foreign-funded procurement, a ceiling may be applied to bid prices provided the conditions are met under Section 31.2 of the 2016 revised IRR of RA No. 9184.

12. Alternative Bids

Bidders shall submit offers that comply with the requirements of the Bidding Documents, including the basic technical design as indicated in the drawings and specifications. Unless there is a value engineering clause in the **BDS**, alternative Bids shall not be accepted.

13. Bid Prices

All bid prices for the given scope of work in the Project as awarded shall be considered as fixed prices, and therefore not subject to price escalation during contract implementation, except under extraordinary circumstances as determined by the NEDA and approved by the GPPB pursuant to the revised Guidelines for Contract Price Escalation guidelines.

14. Bid and Payment Currencies

- 14.1. Bid prices may be quoted in the local currency or trade able currency accepted by the BSP at the discretion of the Bidder. However, for purposes of bid evaluation, Bids denominated in foreign currencies shall be converted to Philippine currency based on the exchange rate as published in the BSP reference rate bulletin on the day of the bid opening.

14.2. Payment of the contract price shall be made in Philippine Pesos.

15. Bid Security

15.1. The Bidder shall submit a Bid Securing Declaration or any form of Bid Security in the amount indicated in the **BDS**, which shall be not less than the percentage of the ABC in accordance with the schedule in the **BDS**.

15.2. The Bid and bid security shall be valid until **January 10, 2023**. Any bid not accompanied by an acceptable bid security shall be rejected by the Procuring Entity as non-responsive.

16. Sealing and Marking of Bids

Each Bidder shall submit one copy of the first and second components of its Bid.

The Procuring Entity may request additional hard copies and/or electronic copies of the Bid. However, failure of the Bidders to comply with the said request shall not be a ground for disqualification.

If the Procuring Entity allows the submission of bids through online submission to the given website or any other electronic means, the Bidder shall submit an electronic copy of its Bid, which must be digitally signed. An electronic copy that cannot be opened or is corrupted shall be considered non-responsive and, thus, automatically disqualified.

17. Deadline for Submission of Bids

The Bidders shall submit on the specified date and time and either at its physical address or through online submission as indicated in paragraph 7 of the **IB**.

18. Opening and Preliminary Examination of Bids

18.1. The BAC shall open the Bids in public at the time, on the date, and at the place specified in paragraph 9 of the **IB**. The Bidders' representatives who are present shall sign a register evidencing their attendance. In case videoconferencing, webcasting or other similar technologies will be used, attendance of participants shall likewise be recorded by the BAC Secretariat.

In case the Bids cannot be opened as scheduled due to justifiable reasons, the rescheduling requirements under Section 29 of the 2016 revised IRR of RA No. 9184 shall prevail.

18.2. The preliminary examination of Bids shall be governed by Section 30 of the 2016 revised IRR of RA No. 9184.

19. Detailed Evaluation and Comparison of Bids

19.1. The Procuring Entity's BAC shall immediately conduct a detailed evaluation of all Bids rated "*passed*" using non-discretionary pass/fail criteria. The BAC shall consider the conditions in the evaluation of Bids under Section 32.2 of 2016 revised IRR of RA No. 9184.

19.2. If the Project allows partial bids, all Bids and combinations of Bids as indicated in the **BDS** shall be received by the same deadline and opened and evaluated simultaneously so as to determine the Bid or combination of Bids offering the lowest calculated cost to the Procuring Entity. Bid Security as

required by **ITB** Clause 16 shall be submitted for each contract (lot) separately.

- 19.3. In all cases, the NFCC computation pursuant to Section 23.4.2.6 of the 2016 revised IRR of RA No. 9184 must be sufficient for the total of the ABCs for all the lots participated in by the prospective Bidder.

20. Post Qualification

Within a non-extendible period of *five (5) calendar days* from receipt by the Bidder of the notice from the BAC that it submitted the Lowest Calculated Bid, the Bidder shall submit its *latest income and business tax returns filed and paid through the BIR Electronic Filing and Payment System (eFPS), and other appropriate licenses and permits required by law* and stated in the **BDS**.

21. Signing of the Contract

The documents required in Section 37.2 of the 2016 revised IRR of RA No. 9184 shall form part of the Contract. Additional Contract documents are indicated in the **BDS**.

Section III. Bid Data Sheet

Bid Data Sheet

ITB Clause			
5.2	For this purpose, contracts similar to the Project refer to contracts which have the same major categories of work, which shall be construction/rehabilitation improvement/ repair of roadways .		
7.1	<i>Subcontracting is not allowed.</i>		
10.3	PCAB Registration Particular includes the following: Kind of Project and Size Range: Roadways – Medium A		
10.4	The key personnel must meet the required minimum years of experience set below.		
	<u>Key Personnel</u>	<u>General Experience</u>	<u>Relevant Experience</u>
	Project Manager	5	3
	Project Engineer	5	3
	Materials Engineer I	3	1
	Geodetic Engineer	3	1
	Construction Foreman	3	1
	Safety Officer	1	1
	First Aider	1	1
10.5	The minimum major equipment requirements are the following:		
	<u>Equipment</u>	<u>Capacity</u>	<u>Number of Units</u>
	Aircompressor with Jackhammer	-	1
	Total Station, including accessories	-	1
	Jackhammer with Generator	-	1
	Welding Machine with Generator	-	1
	Backhoe, wheel type	-	1
	Plate Compactor	-	3
	Concrete Saw	-	3
	One-Bagger Concrete Mixer	-	8
	Bar Cutter/Bender	-	5
	Road Roller, Vibratory, Single Smooth Drum	-	1
	Road Grader	140Hp/G710A	1
	Backhoe, crawler type	0.80cu.m	1
	Stake Truck	-	2
	Self Loading Truck	-	1
	Concrete Vibrator	-	5
	Water Tank Truck	1000 gals	1
	Handtools	-	Enough
12	Alternative Bids shall not be accepted.		
15.1	The bid security shall be in the form of a Bid Securing Declaration or any of the following forms and amounts: a. The amount of not less than Php 850,000.00 [2% of ABC] , draft/guarantee or irrevocable letter of credit; b. The amount of not less than Php 2,125,000.00 [5% of ABC] if bid security is in Surety Bond.		
16	Each Bidder shall submit one (1) original and two (2) copies of the first and second components of its bid. Should there be discrepancies, the original copy would prevail.		

19.2	Partial bids are not allowed.
20	<p>Other appropriate licenses and permits:</p> <ul style="list-style-type: none"> <i>a. Valid and Current Registration Certificate (SEC, DTI, or CDA, whichever is applicable), all pages</i> <i>b. Valid and Current Mayor's Permit</i> <i>c. Valid Tax Clearance for Bidding Purposes</i> <i>d. PCAB License</i> <i>e. Latest Audited Financial Statements stamped received by the BIR or its duly authorized institution</i> <i>f. BIR Registration Certificate</i>
21	<p>Additional contract documents relevant to the Project:</p> <ul style="list-style-type: none"> a. Construction Safety and Health Program approved by the DOLE; b. Contractor's All Risk Insurance (CARI); c. Construction Schedule and S-curve / Bar Chart / PERT CPM Network Diagram and detailed computations of contract time. d. Manpower Utilization Schedule e. Narrative Description of Construction Procedures and Methods f. Equipment Utilization Schedule

Section IV. General Conditions of Contract

1. **Scope of Contract**

This Contract shall include all such items, although not specifically mentioned, that can be reasonably inferred as being required for its completion as if such items were expressly mentioned herein. All the provisions of RA No. 9184 and its 2016 revised IRR, including the Generic Procurement Manual, and associated issuances, constitute the primary source for the terms and conditions of the Contract, and thus, applicable in contract implementation. Herein clauses shall serve as the secondary source for the terms and conditions of the Contract.

This is without prejudice to Sections 74.1 and 74.2 of the 2016 revised IRR of RA No. 9184 allowing the GPPB to amend the IRR, which shall be applied to all procurement activities, the advertisement, posting, or invitation of which were issued after the effectivity of the said amendment.

2. **Sectional Completion of Works**

If sectional completion is specified in the **Special Conditions of Contract (SCC)**, references in the Conditions of Contract to the Works, the Completion Date, and the Intended Completion Date shall apply to any Section of the Works (other than references to the Completion Date and Intended Completion Date for the whole of the Works).

3. **Possession of Site**

4.1. The Procuring Entity shall give possession of all or parts of the Site to the Contractor based on the schedule of delivery indicated in the **SCC**, which corresponds to the execution of the Works. If the Contractor suffers delay or incurs cost from failure on the part of the Procuring Entity to give possession in accordance with the terms of this clause, the Procuring Entity's Representative shall give the Contractor a Contract Time Extension and certify such sum as fair to cover the cost incurred, which sum shall be paid by Procuring Entity.

4.2. If possession of a portion is not given by the above date, the Procuring Entity will be deemed to have delayed the start of the relevant activities. The resulting adjustments in contract time to address such delay may be addressed through contract extension provided under Annex "E" of the 2016 revised IRR of RA No. 9184.

4. **The Contractor's Obligations**

The Contractor shall employ the key personnel named in the Schedule of Key Personnel indicating their designation, in accordance with **ITB** Clause 10.3 and specified in the **BDS**, to carry out the supervision of the Works.

The Procuring Entity will approve any proposed replacement of key personnel only if their relevant qualifications and abilities are equal to or better than those of the personnel listed in the Schedule.

5. **Performance Security**

5.1. Within ten (10) calendar days from receipt of the Notice of Award from the Procuring Entity but in no case later than the signing of the contract by both parties, the successful Bidder shall furnish the performance security in any of the forms prescribed in Section 39 of the 2016 revised IRR.

5.2. The Contractor, by entering into the Contract with the Procuring Entity, acknowledges the right of the Procuring Entity to institute action pursuant to RA No. 3688 against any subcontractor be they an individual, firm, partnership, corporation, or association supplying the Contractor with labor, materials and/or equipment for the performance of this Contract.

6. Site Investigation Reports

The Contractor, in preparing the Bid, shall rely on any Site Investigation Reports referred to in the SCC supplemented by any information obtained by the Contractor.

7. Warranty

7.1. In case the Contractor fails to undertake the repair works under Section 62.2.2 of the 2016 revised IRR, the Procuring Entity shall forfeit its performance security, subject its property(ies) to attachment or garnishment proceedings, and perpetually disqualify it from participating in any public bidding. All payables of the GOP in his favor shall be offset to recover the costs.

7.2. The warranty against Structural Defects/Failures, except that occasioned-on force majeure, shall cover the period from the date of issuance of the Certificate of Final Acceptance by the Procuring Entity. Specific duration of the warranty is found in the SCC.

8. Liability of the Contractor

Subject to additional provisions, if any, set forth in the SCC, the Contractor's liability under this Contract shall be as provided by the laws of the Republic of the Philippines.

If the Contractor is a joint venture, all partners to the joint venture shall be jointly and severally liable to the Procuring Entity.

9. Termination for Other Causes

Contract termination shall be initiated in case it is determined *prima facie* by the Procuring Entity that the Contractor has engaged, before, or during the implementation of the contract, in unlawful deeds and behaviors relative to contract acquisition and implementation, such as, but not limited to corrupt, fraudulent, collusive, coercive, and obstructive practices as stated in ITB Clause 4.

10. Dayworks

Subject to the guidelines on Variation Order in Annex "E" of the 2016 revised IRR of RA No. 9184, and if applicable as indicated in the SCC, the Day works rates in the Contractor's Bid shall be used for small additional amounts of work only when the Procuring Entity's Representative has given written instructions in advance for additional work to be paid for in that way.

11. Program of Work

11.1. The Contractor shall submit to the Procuring Entity's Representative for approval the said Program of Work showing the general methods, arrangements, order, and timing for all the activities in the Works. The submissions of the Program of Work are indicated in the SCC.

11.2. The Contractor shall submit to the Procuring Entity's Representative for approval an updated Program of Work at intervals no longer than the period stated in the **SCC**. If the Contractor does not submit an updated Program of Work within this period, the Procuring Entity's Representative may withhold the amount stated in the **SCC** from the next payment certificate and continue to withhold this amount until the next payment after the date on which the overdue Program of Work has been submitted.

12. Instructions, Inspections and Audits

The Contractor shall permit the GOP or the Procuring Entity to inspect the Contractor's accounts and records relating to the performance of the Contractor and to have them audited by auditors of the GOP or the Procuring Entity, as may be required.

13. Advance Payment

The Procuring Entity shall, upon a written request of the Contractor which shall be submitted as a Contract document, make an advance payment to the Contractor in an amount not exceeding fifteen percent (15%) of the total contract price, to be made in lump sum, or at the most two installments according to a schedule specified in the **SCC**, subject to the requirements in Annex "E" of the 2016 revised IRR of RA No. 9184.

14. Progress Payments

The Contractor may submit a request for payment for Work accomplished. Such requests for payment shall be verified and certified by the Procuring Entity's Representative/Project Engineer. Except as otherwise stipulated in the **SCC**, materials and equipment delivered on the site but not completely put in place shall not be included for payment.

15. Operating and Maintenance Manuals

15.1. If required, the Contractor will provide "as built" Drawings and/or operating and maintenance manuals as specified in the **SCC**.

15.2. If the Contractor does not provide the Drawings and/or manuals by the dates stated above, or they do not receive the Procuring Entity's Representative's approval, the Procuring Entity's Representative may withhold the amount stated in the **SCC** from payments due to the Contractor.

Section V. Special Conditions of Contract

Special Conditions of Contract

GCC Clause	
2	No sectional completion.
4.1	Upon receipt of Notice to Proceed.
6	None
7.2	Five (5) years.
10	No day works are applicable to the contract.
11.1	The Contractor shall submit the Program of Work to the Procuring Entity's Representative within <i>[insert number]</i> days of delivery of the Notice of Award.
11.2	The amount to be withheld for late submission of an updated Program of Work is <i>[insert amount]</i> .
13	The amount of the advance payment is <i>15% of the total contract price and schedule of payment</i>
14	Materials and equipment delivered on the site but not completely put in place shall not be included for payment.
15.1	The date by which "as built" drawings are required is after completion of the project.
15.2	The amount to be withheld for failing to produce "as built" drawings and/or operating and maintenance manuals by the date required is <i>[amount in local currency]</i> .

Section VI. Specifications

Project Title: Construction/Rehabilitation/Improvement of Various Public Infrastructures (Roadways, River Control & Fence)

Location: Various Barangays, Tabaco City

Contract ID No. 021-08-2022-INFRA

Approved Budget for the Contract (ABC): Php 42,500,000.00

Duration: 240 Calendar Days

Item No.	Project Description	Approved Budget per Item (Php)
A.	Roadways	
1	Rehabilitation/Improvement of Mariroc Roadways, Sitio Nagsipit, Brgy. Mariroc, Tabaco City	4,000,000.00
2	Rehabilitation/Improvement of Panal Roadways, Brgy. Panal, Tabaco City	2,000,000.00
3	Rehabilitation/Improvement of San Carlos Roadways, Brgy. San Carlos, Tabaco City	4,000,000.00
4	Rehabilitation/Improvement of San Lorenzo Roadways, Brgy. San Lorenzo, Tabaco City	4,000,000.00
5	Rehabilitation/Improvement of Quinastillojan Roadways, Brgy. Quinastillojan, Tabaco City	3,000,000.00
6	Rehabilitation/Improvement of Buhian Roadways, Brgy. Buhian, Tabaco City	4,000,000.00
7	Rehabilitation/Improvement of Fatima Roadways, Brgy. Fatima, Tabaco City	4,000,000.00
8	Rehabilitation/Improvement of Oson-Magapo Roadways, Brgy. Oson, Tabaco City	2,000,000.00
9	Rehabilitation/Improvement of Sto. Cristo Roadways, Brgy. Sto. Cristo, Tabaco City	1,500,000.00
10	Rehabilitation/Improvement of Basud Roadways, Brgy. Basud, Tabaco City	2,000,000.00
B.	River Control	
11	Rehabilitation/Improvement of Guinobat River Control, Brgy. Guinobat, Tabaco City	3,000,000.00
12	Rehabilitation/Improvement of Bonot River Control, Brgy. Bonot, Tabaco City	3,000,000.00
C.	Fence	
13	Construction of Perimeter Fence (Slope Protection), Karangahan Wellness & Cultural District, Karangahan Blvd, Tabaco City	2,000,000.00
14	Rehabilitation/Improvement of Fence, New Government Center, Brgy. Pawa, Tabaco City	2,000,000.00
15	Construction of Perimeter Fence, Central MRF, Brgy. San Vicente, Tabaco City	2,000,000.00

SCOPE OF WORK AND TECHNICAL SPECIFICATIONS

All works to be undertaken shall be in accordance with the plans and working drawings. It includes the furnishing of all materials, labor and equipment with supervision necessary for the complete construction of the said project.

ITEMS OF WORK INCLUDED

1. Rehabilitation/Improvement of Mariroc Roadways, Sitio Nagsipit, Brgy. Mariroc, Tabaco City

Concrete Cutting & Demolition of Existing Damaged Concrete Pavement

This item of work includes cutting of concrete with the use of concrete cutter and demolition of the damaged concrete using jackhammer with generator.

Subgrade Preparation

This item shall consist of the preparation of the subgrade for the support of overlying structural layers. It shall extend to full width of the roadway. Unless authorized by the Engineer, subgrade preparation shall not be done unless the Contractor is able to start immediately the construction of the pavement structure.

Aggregate Base Course

This item shall consist of furnishing, placing and compacting an aggregate base course on a prepared subgrade/subbase in accordance with this specification and the lines, grades, thickness and typical cross-sections shown on the Plans, or as established by the Engineer.

Aggregate for base course shall consist of hard, durable particles or fragments of crushed stone, crushed slag or crushed or natural gravel and filler of natural or crushed sand or other finely divided mineral matter. The composite material shall be free from vegetable matter and lumps or balls of clay, and shall be of such nature that it can be compacted readily to form a firm, stable base.

Portland Cement Concrete Pavement

This Item shall consist of pavement of Portland Cement Concrete, with or without reinforcement, constructed on the prepared base in accordance with this Specification and in conformity with lines, grades, thickness and typical cross-section shown on the Plans.

Removal & Disposal of Excavated/ Unsuitable Materials

This item of work consists of removing silt or any unsuitable materials or soil layers using staketruck.

Traffic Management

This item involves directing vehicular and pedestrian traffic around a construction zone or other road disruption through the provision of warning sign, bollards, and barricade caution warning tape, and other devices to regulate, warn, or guide road users in order to attain safe and efficient movement of vehicles, pedestrians, bicyclists, workers, and the general public.

Bunkhouse and Other Facilities

This item includes the construction of the temporary facilities for the engineer and a temporary bunkhouse for rental basis including the power and water supply for the storage of the materials / equipment needed for the whole duration of the project.

Occupational Construction Safety and Health

The contractor needs to establish safety goals and objectives develop and implement a written Safety and Health program. The contractor also needs to provide a Part-Time Safety Practitioner and First Aider who undergone training at DOLE/ Red cross respectively.

Project Billboard/ Signboard

Fabrication & installation of plywood size (1.2m x 2.4m) standard billboard with coco lumber frame.

2. *Rehabilitation/Improvement of Panal Roadways, Brgy Panal, Tabaco City*

Concrete Cutting of Existing PCCP & Demolition of Obstruction

This item of work includes cutting of concrete with the use of concrete cutter and demolition of the damaged concrete using jackhammer with generator.

Subgrade Preparation

This Item shall consist of the preparation of the subgrade for the support of overlying structural layers. It shall extend to full width of the roadway. Unless authorized by the Engineer, subgrade preparation shall not be done unless the Contractor is able to start immediately the construction of the pavement structure.

Aggregate Base Course

This Item shall consist of furnishing, placing and compacting an aggregate base course on a prepared subgrade/subbase in accordance with this specification and the lines, grades, thickness and typical cross-sections shown on the Plans, or as established by the Engineer.

Aggregate for base course shall consist of hard, durable particles or fragments of crushed stone, crushed slag or crushed or natural gravel and filler of natural or crushed sand or other finely divided mineral matter. The composite material shall be free from vegetable matter and lumps or balls of clay, and shall be of such nature that it can be compacted readily to form a firm, stable base.

Portland Cement Concrete Pavement (thk = 0.23m)

This Item shall consist of pavement of Portland Cement Concrete, with or without reinforcement, constructed on the prepared base in accordance with this Specification and in conformity with lines, grades, thickness and typical cross-section shown on the Plans.

Pipe Culvert, 0.45m Ø

This item shall consist of the construction or reconstruction of pipe culverts and storm drains, hereinafter referred to as “conduit” in accordance with this Specification and in conformity with the lines and grades shown on the Plans or as established by the Engineer.

Removal & Disposal of Excavated/ Unsuitable Materials

This item of work consists of removing silt or any unsuitable materials or soil layers using a staketruck.

Traffic Management

This item involves directing vehicular and pedestrian traffic around a construction zone or other road disruption through the provision of warning sign, bollards, and barricade caution warning tape, and other devices to regulate, warn, or guide road users in order to attain safe and efficient movement of vehicles, pedestrians, bicyclists, workers, and the general public.

Bunkhouse and Other Facilities

This item includes the construction the temporary facilities for the engineer and temporary bunkhouse for rental basis including the power and water supply for the storage of the materials / equipment needed for the whole duration of the project

Occupational Construction Safety and Health

The contractor needs to establish safety goals and objectives develop and implement a written Safety and Health program. The contractor also needs to provide a Part-Time Safety Practitioner and First Aider who undergone training at DOLE/ Red cross respectively.

Project Billboard/ Signboard

Fabrication & installation of plywood size (1.2m x 2.4m) standard billboard with coco lumber frame.

3. *Rehabilitation/Improvement of San Carlos Roadways, Brgy San Carlos, Tabaco City*

A. Road Re-blocking

Concrete Cutting of Existing PCCP & Demolition of Obstruction

This item of work includes cutting of concrete with the use of concrete cutter and demolition of the damaged concrete using backhoe with pavement breaker.

Embankment

This item shall consist of the construction of embankment in accordance with the specification and in conformity with the lines, grades and dimensions shown on the plans or established by the engineer.

Aggregate Base Course

This item shall consist of furnishing, placing and compacting an aggregate base course on a prepared subgrade/subbase in accordance with this specification and the lines, grades, thickness and typical cross-sections shown on the Plans, or as established by the Engineer.

Aggregate for base course shall consist of hard, durable particles or fragments of crushed stone, crushed slag or crushed or natural gravel and filler of natural or crushed sand or other finely divided mineral matter. The composite material shall be free from vegetable matter and lumps or balls of clay, and shall be of such nature that it can be compacted readily to form a firm, stable base.

Portland Cement Concrete Pavement (thk = 0.23m)

This item shall consist of pavement of Portland Cement Concrete, with or without reinforcement, constructed on the prepared base in accordance with this Specification and in conformity with lines, grades, thickness and typical cross-section shown on the Plans.

Removal & Disposal of Excavated/ Unsuitable Materials

This item of work consists of removing silt or any unsuitable materials or soil layers using stake truck.

B. Box Culvert Drainage

Demolition & Removal of Obstruction

This Item shall consist of the removal wholly or in part, and satisfactory disposal of all buildings, structures, old pavements, abandoned pipe lines, and any other obstructions which are not designated or permitted to remain, except for the obstructions to be removed and disposed off

under other items in the Contract. It shall also include the salvaging of designated materials and backfilling the resulting trenches, holes, and pits.

Excavation Works

This item of work consists of excavation of material in accordance with this Specification and in conformity with the lines, grades and dimensions shown on the Plans or established by the Engineer. The Contractor shall notify the Engineer sufficiently in advance of the beginning of any excavation so that cross-sectional elevations and measurements may be taken on the undisturbed ground. The natural ground adjacent to the structure shall not be disturbed without permission of the Engineer.

Structural Concrete

This item of work is consist of furnishing, placing and finishing concrete in all structures except pavements in accordance with this Specification and conforming to the lines, grades, and dimensions shown on the Plans.

Reinforcing Steel

This item of work consists of furnishing, bending, fabricating and placing of steel reinforcement all in Grade 40.

Formworks

This item shall consist of designing, constructing and removing forms and falsework to temporarily support concrete, girders and other structural elements until the structure is completed to the point it can support itself.

Manhole Cover with Inlet

This item shall consist of the construction, reconstruction or adjustment of manholes, inlets and catch basins in accordance with this Specification and in reasonably close conformity with the lines and grades shown on the Plans or as established by the Engineer.

Restoration of Damaged Structure

This Item shall consist of restoration of damaged fences and driveway alleys that was damaged during the time of construction.

C. Other General Requirements

Bunkhouse and Other Facilities

This item includes the construction the temporary facilities for the engineer and temporary bunkhouse for rental basis including the power and water supply for the storage of the materials / equipment needed for the whole duration of the project

Occupational Construction Safety and Health

The contractor needs to establish safety goals and objectives develop and implement a written Safety and Health program. The contractor also needs to provide a Part-Time Safety Practitioner and First Aider who undergone training at DOLE/ Red cross respectively.

Project Billboard/ Signboard

Fabrication & installation of plywood size (1.2m x 2.4m) standard billboard with coco lumber frame.

Traffic Management

This item involves directing vehicular and pedestrian traffic around a construction zone or other road disruption through the provision of warning sign, bollards, and barricade caution warning tape, and other devices to regulate, warn, or guide road users in order to attain safe and efficient movement of vehicles, pedestrians, bicyclists, workers, and the general public.

4. *Rehabilitation/Improvement of San Lorenzo Roadways, Brgy San Lorenzo, Tabaco City*

Demolition & Removal of Obstruction

This Item shall consist of the removal wholly or in part, and satisfactory disposal of all buildings, structures, old pavements, abandoned pipe lines, and any other obstructions which are not designated or permitted to remain, except for the obstructions to be removed and disposed off under other items in the Contract. It shall also include the salvaging of designated materials and backfilling the resulting trenches, holes, and pits.

Embankment

This item shall consist of the construction of embankment in accordance with the specification and in conformity with the lines, grades and dimensions shown on the plans or established by the engineer.

Excavation Works

This item of work consists of excavation of material in accordance with this Specification and in conformity with the lines, grades and dimensions shown on the Plans or established by the Engineer. The Contractor shall notify the Engineer sufficiently in advance of the beginning of any excavation so that cross-sectional elevations and measurements any be taken on the undisturbed ground. The natural ground adjacent to the structure shall not be disturbed without permission of the Engineer.

Structural Concrete

This item of work is consist of furnishing, placing and finishing concrete in all structures except pavements in accordance with this Specification and conforming to the lines, grades, and dimensions shown on the Plans.

Reinforcing Steel

This item of work consists of furnishing, bending, fabricating and placing of steel reinforcement all in Grade 40.

Formworks

This item shall consist of designing, constructing and removing forms and falsework to temporarily support concrete, girders and other structural elements until the structure is completed to the point it can support itself.

Manhole Cover

This item shall consist of the construction, reconstruction or adjustment of manholes, inlets and catch basins in accordance with this Specification and in reasonably close conformity with the lines and grades shown on the Plans or as established by the Engineer.

Restoration of Damaged Structure

This Item shall consist of restoration of damaged fences and driveway alleys thas was damaged during the time of construction.

Bunkhouse and Other Facilities

This item includes the construction the temporary facilities for the engineer and temporary bunkhouse for rental basis including the power and water supply for the storage of the materials / equipment needed for the whole duration of the project

Occupational Construction Safety and Health

The contractor needs to establish safety goals and objectives develop and implement a written Safety and Health program. The contractor also needs to provide a Part-Time Safety Practitioner and First Aider who undergone training at DOLE/ Red cross respectively.

Project Billboard/ Signboard

Fabrication & installation of plywood size (1.2m x 2.4m) standard billboard with coco lumber frame.

Traffic Management

This item involves directing vehicular and pedestrian traffic around a construction zone or other road disruption through the provision of warning sign, bollards, and barricade caution warning tape, and other devices to regulate, warn, or guide road users in order to attain safe and efficient movement of vehicles, pedestrians, bicyclists, workers, and the general public.

5. *Rehabilitation/Improvement of Quinastillojan Roadways, Brgy. Quinastillojan, Tabaco City*

A. *Slope Protection*

Clearing & Grubbing

This item shall consist of clearing, grubbing, removing and disposing all vegetation and debris as designated in the Contract, except those objects that are designated to remain in place or are to be removed in consonance with other provisions of this Specification. The work shall also include the preservation from injury or defacement of all objects designated to remain.

Structural Excavation

This item of work consists of excavation of material in accordance with this Specification and in conformity with the lines, grades and dimensions shown on the Plans or established by the Engineer. The Contractor shall notify the Engineer sufficiently in advance of the beginning of any excavation so that cross-sectional elevations and measurements any be taken on the undisturbed ground. The natural ground adjacent to the structure shall not be disturbed without permission of the Engineer.

Handlaid Rock Embankment

This item shall consist of hand-laid rock embankment, as designated in the Bid Schedule, constructed in accordance with this Specification and in conformity with the lines and grades shown on the Plans or established by the Engineer.

Stones shall be sound and durable and furnished in a well-balanced ranged of sizes meeting the requirements, herein.

Unless otherwise provided by the Plans or Special provisions, all stones shall be more than 0.015 cubic meter in volume and not less than 75 percent of the total volume of rock embankment and shall consist of stones 0.03 cubic meter in volume. Stones obtained from excavation performed under this contract may be used. Adobe stone shall not be used, unless otherwise specified.

Grouted Riprap

This item shall consist of the furnishing and placing of riprap with or without grout as the case may be, with or without filter backing, furnished and constructed in accordance with this Specification and to the lines and grades and dimensions shown on the Plans.

Stones for riprap shall consist of rock as nearly as rectangular in section as is practical, except that riprap of Class A may consist of round natural stones. The stones shall be sound, tough, durable, dense, resistant to the action of air and water, and suitable in all respects for the purpose intended.

Reinforcing Steel

This item of work consists of furnishing, bending, fabricating and placing of steel reinforcement all in Grade 40.

Structural Concrete

This item of work is consist of furnishing, placing and finishing concrete in all structures except pavements in accordance with this Specification and conforming to the lines, grades, and dimensions shown on the Plans.

Formworks

This item shall consist of designing, constructing and removing forms and falsework to temporarily support concrete, girders and other structural elements until the structure is completed to the point it can support itself.

B. Roadways

Concrete Cutting of Existing PCCP & Demolition of Obstruction

This item of work includes cutting of concrete with the use of concrete saw and demolition of the damaged concrete using jackhammer with generator.

Aggregate Base Course

This Item shall consist of furnishing, placing and compacting an aggregate base course on a prepared subgrade/subbase in accordance with this specification and the lines, grades, thickness and typical cross-sections shown on the Plans, or as established by the Engineer.

Aggregate for base course shall consist of hard, durable particles or fragments of crushed stone, crushed slag or crushed or natural gravel and filler of natural or crushed sand or other finely divided mineral matter. The composite material shall be free from vegetable matter and lumps or balls of clay, and shall be of such nature that it can be compacted readily to form a firm, stable base.

Portland Cement Concrete Pavement (thk = 0.23m)

This item shall consist of pavement of Portland Cement Concrete, with or without reinforcement, constructed on the prepared base in accordance with this Specification and in conformity with lines, grades, thickness and typical cross-section shown on the Plans.

Removal & Disposal of Excavated/ Unsuitable Materials

This item of work consists of removing silt or any unsuitable materials or soil layers using stake truck.

C. Other General Requirements

Bunkhouse and Other Facilities

This item includes the construction the temporary facilities for the engineer and temporary bunkhouse for rental basis including the power and water supply for the storage of the materials / equipment needed for the whole duration of the project

Occupational Construction Safety and Health

The contractor needs to establish safety goals and objectives develop and implement a written Safety and Health program. The contractor also needs to provide a Part-Time Safety Practitioner and First Aider who undergone training at DOLE/ Red cross respectively.

Project Billboard/ Signboard

Fabrication & installation of plywood size (1.2m x 2.4m) standard billboard with coco lumber frame.

Traffic Management

This item involves directing vehicular and pedestrian traffic around a construction zone or other road disruption through the provision of warning sign, bollards, and barricade caution warning tape, and other devices to regulate, warn, or guide road users in order to attain safe and efficient movement of vehicles, pedestrians, bicyclists, workers, and the general public

6. *Rehabilitation/Improvement of Buhian Roadways, Brgy. Buhian, Tabaco City*

Clearing & Grubbing

This item shall consist of clearing, grubbing, removing and disposing all vegetation and debris as designated in the Contract, except those objects that are designated to remain in place or are to be removed in consonance with other provisions of this Specification. The work shall also include the preservation from injury or defacement of all objects designated to remain.

Demolition & Removal of Obstruction

This Item shall consist of the removal wholly or in part, and satisfactory disposal of all buildings, structures, old pavements, abandoned pipe lines, and any other obstructions which are not designated or permitted to remain, except for the obstructions to be removed and disposed of under other items in the Contract. It shall also include the salvaging of designated materials and backfilling the resulting trenches, holes, and pits.

Excavation Works

This item of work consists of excavation of material in accordance with this Specification and in conformity with the lines, grades and dimensions shown on the Plans or established by the Engineer. The Contractor shall notify the Engineer sufficiently in advance of the beginning of any excavation so that cross-sectional elevations and measurements any be taken on the undisturbed ground. The natural ground adjacent to the structure shall not be disturbed without permission of the Engineer.

Embankment from Structure Excavation

This Item shall consist of the construction of embankment from excavated materials in accordance with the specification and in conformity with the lines, grades and dimensions shown on the plans or established by the engineer.

RCPC, 0.90m Ø

This item shall consist of the construction or reconstruction of pipe culverts and storm drains, hereinafter referred to as “conduit” in accordance with this Specification and in conformity with the lines and grades shown on the Plans or as established by the Engineer.

Subgrade Preparation

This Item shall consist of the preparation of the subgrade for the support of overlying structural layers. It shall extend to full width of the roadway. Unless authorized by the Engineer, subgrade preparation shall not be done unless the Contractor is able to start immediately the construction of the pavement structure.

Aggregate Base Course

This item shall consist of furnishing, placing and compacting an aggregate base course on a prepared subgrade/subbase in accordance with this Specification and the lines, grades, thickness and typical cross-sections shown on the Plans, or as established by the Engineer.

Aggregate for base course shall consist of hard, durable particles or fragments of crushed stone, crushed slag or crushed or natural gravel and filler of natural or crushed sand or other finely divided mineral matter. The composite material shall be free from vegetable matter and lumps or balls of clay, and shall be of such nature that it can be compacted readily to form a firm, stable base.

Portland Cement Concrete Pavement (thk = 0.23m)

This item shall consist of pavement of Portland Cement Concrete, with or without reinforcement, constructed on the prepared base in accordance with this Specification and in conformity with lines, grades, thickness and typical cross-section shown on the Plans.

Manhole Cover w/ Inlet

This item shall consist of the construction, reconstruction or adjustment of manholes, inlets and catch basins in accordance with this Specification and in reasonably close conformity with the lines and grades shown on the Plans or as established by the Engineer.

Removal & Disposal of Excavated/ Unsuitable Materials

This item of work consists of removing silt or any unsuitable materials or soil layers using stake truck.

Bunkhouse and Other Facilities

This item includes the construction the temporary facilities for the engineer and temporary bunkhouse for rental basis including the power and water supply for the storage of the materials / equipment needed for the whole duration of the project

Occupational Construction Safety and Health

The contractor needs to establish safety goals and objectives develop and implement a written Safety and Health program. The contractor also needs to provide a Part-Time Safety Practitioner and First Aider who undergone training at DOLE/ Red cross respectively.

Project Billboard/ Signboard

Fabrication & installation of plywood size (1.2m x 2.4m) standard billboard with coco lumber frame.

Traffic Management

This item involves directing vehicular and pedestrian traffic around a construction zone or other road disruption through the provision of warning sign, bollards, and barricade caution warning tape, and other devices to regulate, warn, or guide road users in order to attain safe and efficient movement of vehicles, pedestrians, bicyclists, workers, and the general public

7. Rehabilitation/Improvement of Fatima Roadways, Brgy. Fatima, Tabaco City

A. Box Culvert Drainage

Demolition & Removal of Obstruction

This Item shall consist of the removal wholly or in part, and satisfactory disposal of all buildings, structures, old pavements, abandoned pipe lines, and any other obstructions which are not designated or permitted to remain, except for the obstructions to be removed and disposed of under other items in the Contract. It shall also include the salvaging of designated materials and backfilling the resulting trenches, holes, and pits.

Structural Excavation

This item of work consists of excavation of material in accordance with this specification and in conformity with the lines, grades and dimensions shown on the Plans or established by the Engineer. The Contractor shall notify the Engineer sufficiently in advance of the beginning of any excavation so that cross-sectional elevations and measurements may be taken on the undisturbed ground. The natural ground adjacent to the structure shall not be disturbed without permission of the Engineer.

Boulder Embankment

Stones shall be laid flat and securely placed with broken joint lines. The larger stones shall generally be located in the lower part of the structure and voids shall be eliminated to the extent possible. The exposed face of the rock mass shall be reasonably uniform, with no projections of more than 150mm, beyond the neat lines shown on the Plans or as directed by the Engineer. Backfill adjacent to the hand-laid rock embankment shall be filled entirely with acceptable material coming from excavation items and compacted.

Structural Concrete

This item of work is consist of furnishing, placing and finishing concrete in all structures except pavements in accordance with this Specification and conforming to the lines, grades, and dimensions shown on the Plans.

Reinforcing Steel

This item of work consists of furnishing, bending, fabricating and placing of steel reinforcement all in Grade 40.

Formworks

This item shall consist of designing, constructing and removing forms and falsework to temporarily support concrete, girders and other structural elements until the structure is completed to the point it can support itself.

Guardrail

This item shall consist of installation of fabricated handrails using 2"x 3" G.I. Tubular Bar and shall comply with the specified design according to the plans.

Removal & Disposal of Excavated/ Unsuitable Materials

This item of work consists of removing silt or any unsuitable materials or soil layers using stake truck.

B. PCCP (230mm)

Clearing & Grubbing

This item shall consist of clearing, grubbing, removing and disposing all vegetation and debris as designated in the Contract, except those objects that are designated to remain in place or are to be

removed in consonance with other provisions of this Specification. The work shall also include the preservation from injury or defacement of all objects designated to remain.

Demolition of Obstruction

This Item shall consist of the removal wholly or in part, and satisfactory disposal of all buildings, structures, old pavements, abandoned pipe lines, and any other obstructions which are not designated or permitted to remain, except for the obstructions to be removed and disposed off under other items in the Contract. It shall also include the salvaging of designated materials and backfilling the resulting trenches, holes, and pits.

Aggregate Base Course

This item shall consist of furnishing, placing and compacting an aggregate base course on a prepared subgrade/subbase in accordance with this specification and the lines, grades, thickness and typical cross-sections shown on the Plans, or as established by the Engineer.

Aggregate for base course shall consist of hard, durable particles or fragments of crushed stone, crushed slag or crushed or natural gravel and filler of natural or crushed sand or other finely divided mineral matter. The composite material shall be free from vegetable matter and lumps or balls of clay, and shall be of such nature that it can be compacted readily to form a firm, stable base.

PCCP (230mm thk)

This Item shall consist of pavement of Portland Cement Concrete, with or without reinforcement, constructed on the prepared base in accordance with this Specification and in conformity with lines, grades, thickness (200mm) and typical cross-section shown on the Plans.

Restoration of Damaged Structure

This Item shall consist of restoration of damaged fences and driveway alleys that was damaged during the time of construction.

Removal & Disposal of Excavated/ Unsuitable Materials

This item of work consists of removing silt or any unsuitable materials or soil layers using stake truck.

C. Slope Protection

Structure Excavation

This item of work consists of excavation of material in accordance with this Specification and in conformity with the lines, grades and dimensions shown on the Plans or established by the Engineer. The Contractor shall notify the Engineer sufficiently in advance of the beginning of any excavation so that cross-sectional elevations and measurements may be taken on the undisturbed ground. The natural ground adjacent to the structure shall not be disturbed without permission of the Engineer.

Grouted Riprap

This item shall consist of the furnishing and placing of riprap with or without grout as the case may be, with or without filter backing, furnished and constructed in accordance with this Specification and to the lines and grades and dimensions shown on the Plans.

Stones for riprap shall consist of rock as nearly as rectangular in section as is practical, except that riprap of Class A may consist of round natural stones. The stones shall be sound, tough, durable, dense, resistant to the action of air and water, and suitable in all respects for the purpose intended.

Structural Concrete

This item of work is consist of furnishing, placing and finishing concrete in all structures except pavements in accordance with this Specification and conforming to the lines, grades, and dimensions shown on the Plans.

Reinforcing Steel

This item of work consists of furnishing, bending, fabricating and placing of steel reinforcement all in Grade 40.

Formworks

This item shall consist of designing, constructing and removing forms and falsework to temporarily support concrete, girders and other structural elements until the structure is completed to the point it can support itself.

Removal & Disposal of Excavated/ Unsuitable Materials

This item of work consists of removing silt or any unsuitable materials or soil layers using stake truck.

D. Other General Requirements

Bunkhouse and Other Facilities

This item includes the construction the temporary facilities for the engineer and temporary bunkhouse for rental basis including the power and water supply for the storage of the materials / equipment needed for the whole duration of the project

Occupational Construction Safety and Health

The contractor needs to establish safety goals and objectives develop and implement a written Safety and Health program. The contractor also needs to provide a Part-Time Safety Practitioner and First Aider who undergone training at DOLE/ Red cross respectively.

Project Billboard/ Signboard

Fabrication & installation of plywood size (1.2m x 2.4m) standard billboard with coco lumber frame.

Traffic Management

This item involves directing vehicular and pedestrian traffic around a construction zone or other road disruption through the provision of warning sign, bollards, and barricade caution warning tape, and other devices to regulate, warn, or guide road users in order to attain safe and efficient movement of vehicles, pedestrians, bicyclists, workers, and the general public

8. Rehabilitation/Improvement of Oson-Magapo Roadways, Brgy. Oson, Tabaco City

Clearing & Grubbing

This item shall consist of clearing, grubbing, removing and disposing all vegetation and debris as designated in the Contract, except those objects that are designated to remain in place or are to be removed in consonance with other provisions of this Specification. The work shall also include the preservation from injury or defacement of all objects designated to remain.

Structure Excavation including Surplus Common Excavation

This item of work consists of excavation of material in accordance with this Specification and in conformity with the lines, grades and dimensions shown on the Plans or established by the Engineer. The Contractor shall notify the Engineer sufficiently in advance of the beginning of any excavation so that cross-sectional elevations and measurements any be taken on the undisturbed

ground. The natural ground adjacent to the structure shall not be disturbed without permission of the Engineer.

Embankment (from Excavation)

This item shall consist of the construction of embankment from structure excavation in accordance with this Specification and in conformity with the lines, grades and dimensions shown on the Plans or established by the Engineer. Embankments and backfills shall contain no muck, peat, sod, roots or other deleterious matter. Rocks, broken concrete or other solid, bulky materials shall not be placed in embankment areas where piling is to be placed or driven.

Rubble Concrete Foundation

This item shall consist of the construction of rubble concrete in accordance with this specification and in conformity with the lines, grades, slopes and dimensions shown in the Plans or established by the Engineer.

The stone shall be cleaned, hard, and durable and shall be subject to the Engineer's approval. Adobe stone shall not be used unless otherwise specified. Stones to be used shall be more than 0.015 cubic meter in volume and not less than 75 percent of the total volume of rock embankment and shall consist of stones 0.03 cubic meter in volume. Stones obtained from excavation performed under this contract may be used.

Grouted Riprap

This Item shall consist of the furnishing and placing of riprap with or without grout as the case may be, with or without filter backing, furnished and constructed in accordance with this Specification and to the lines and grades and dimensions shown on the Plans.

Stones for riprap shall consist of rock as nearly as rectangular in section as is practical, except that riprap of Class A may consist of round natural stones. The stones shall be sound, tough, durable, dense, resistant to the action of air and water, and suitable in all respects for the purpose intended.

Subgrade Preparation

This item shall consist of the preparation of the subgrade for the support of overlying structural layers. It shall extend to full width of the roadway. Unless authorized by the Engineer, subgrade preparation shall not be done unless the Contractor is able to start immediately the construction of the pavement structure.

Aggregate Base Course

This item shall consist of furnishing, placing and compacting an aggregate base course on a prepared subgrade/subbase in accordance with this Specification and the lines, grades, thickness and typical cross-sections shown on the Plans, or as established by the Engineer.

Aggregate for base course shall consist of hard, durable particles or fragments of crushed stone, crushed slag or crushed or natural gravel and filler of natural or crushed sand or other finely divided mineral matter. The composite material shall be free from vegetable matter and lumps or balls of clay, and shall be of such nature that it can be compacted readily to form a firm, stable base.

Portland Cement Concrete Pavement

This item shall consist of pavement of Portland Cement Concrete, with or without reinforcement, constructed on the prepared base in accordance with this Specification and in conformity with lines, grades, thickness and typical cross section shown on the Plans.

Bunkhouse and Other Facilities

This item includes the construction the temporary facilities for the engineer and temporary bunkhouse for rental basis including the power and water supply for the storage of the materials / equipment needed for the whole duration of the project

Occupational Construction Safety and Health

The contractor needs to establish safety goals and objectives develop and implement a written Safety and Health program. The contractor also needs to provide a Part-Time Safety Practitioner and First Aider who undergone training at DOLE/ Red cross respectively.

Project Billboard/ Signboard

Fabrication & installation of plywood size (1.2m x 2.4m) standard billboard with coco lumber frame.

9. *Rehabilitation/Improvement of Sto. Cristo Roadways, Brgy Sto Cristo, Tabaco City*

Concrete Cutting of Existing PCCP & Demolition of Obstruction

This item of work includes cutting of concrete with the use of concrete cutter and demolition of the damaged concrete using jackhammer with generator.

Excavation

This item of work consists of excavation and the disposal of materials in accordance with this specification and in conformity with the lines, grades and dimensions shown on the Plans or established by the Engineer. The Contractor shall notify the Engineer sufficiently in advance of the beginning of any excavation so that cross-sectional elevations and measurements any be taken on the undisturbed ground. The natural ground adjacent to the structure shall not be disturbed without permission of the Engineer.

Backfill

This item shall consist of the construction of embankment from excavated materials in accordance with the specification and in conformity with the lines, grades and dimensions shown on the plans or established by the engineer using plate compactor.

Removal and Disposal of Unsuitable/ Excavated Materials

This item of work consists of removing silt or any unsuitable materials or soil layers using stake truck.

RCPC (0.60m)

This item shall consist of the construction or reconstruction of pipe culverts and storm drains, hereinafter referred to as “conduit” in accordance with this Specification and in conformity with the lines and grades shown on the Plans or as established by the Engineer.

Manhole w/ Cover & Inlet

This item shall consist of the construction, reconstruction or adjustment of manholes, inlets and catch basins in accordance with this Specification and in reasonably close conformity with the lines and grades shown on the Plans or as established by the Engineer.

Restoration Works

This item shall consist of restoration of damaged fences and driveway alleys that was damaged during the time of construction.

Subgrade Preparation

This item shall consist of the preparation of the subgrade for the support of overlying structural layers. It shall extend to full width of the roadway. Unless authorized by the Engineer, subgrade preparation shall not be done unless the Contractor is able to start immediately the construction of the pavement structure.

Aggregate Base Course

This item shall consist of furnishing, placing and compacting an aggregate base course on a prepared subgrade/subbase in accordance with this Specification and the lines, grades, thickness and typical cross-sections shown on the Plans, or as established by the Engineer.

Aggregate for base course shall consist of hard, durable particles or fragments of crushed stone, crushed slag or crushed or natural gravel and filler of natural or crushed sand or other finely divided mineral matter. The composite material shall be free from vegetable matter and lumps or balls of clay, and shall be of such nature that it can be compacted readily to form a firm, stable base.

Portland Cement Concrete Pavement (thk = 0.23m)

This item shall consist of pavement of Portland Cement Concrete, with or without reinforcement, constructed on the prepared base in accordance with this Specification and in conformity with lines, grades, thickness and typical cross section shown on the Plans.

Reinforcing Steel

This item of work consists of furnishing, bending, fabricating and placing of steel reinforcement all in Grade 40.

Structural Concrete

This item of work is consist of furnishing, placing and finishing concrete in all structures except pavements in accordance with this Specification and conforming to the lines, grades, and dimensions shown on the Plans.

Traffic Management

This item involves directing vehicular and pedestrian traffic around a construction zone or other road disruption through the provision of warning sign, bollards, and barricade caution warning tape, and other devices to regulate, warn, or guide road users in order to attain safe and efficient movement of vehicles, pedestrians, bicyclists, workers, and the general public.

Bunkhouse and Other Facilities

This item includes the construction the temporary facilities for the engineer and temporary bunkhouse for rental basis including the power and water supply for the storage of the materials / equipment needed for the whole duration of the project

Occupational Construction Safety and Health

The contractor needs to establish safety goals and objectives develop and implement a written Safety and Health program. The contractor also needs to provide a Part-Time Safety Practitioner and First Aider who undergone training at DOLE/ Red cross respectively.

Project Billboard/ Signboard

Fabrication & installation of plywood size (1.2m x 2.4m) standard billboard with coco lumber frame.

10. Rehabilitation/Improvement of Basud Roadways, Brgy Basud, Tabaco City

I. Repair/ Rehabilitation of Damaged Pavement with Drainage System

Removal and Disposal of Unsuitable (0.15m thk PCCP)

This item shall consist of disposal of demolished existing PCCP on designated area using backhoe with pavement breaker and concrete cutter including disposal of the PCCP using dump truck as directed by the Engineer.

Sub-grade Preparation

This item shall consist of the preparation of the subgrade for the support of overlying structural layers using plate compactor, road roller, and road grader. It shall extend to full width of the roadway. Unless authorized by the Engineer, subgrade preparation shall not be done unless the Contractor is able to start immediately the construction of the pavement structure.

Aggregate Base Course

This item shall consist of furnishing, placing and compacting an aggregate base course on a prepared subgrade/subbase in accordance with this Specification and the lines, grades, thickness and typical cross-sections shown on the Plans, or as established by the Engineer.

Aggregate for base course shall consist of hard, durable particles or fragments of crushed stone, crushed slag or crushed or natural gravel and filler of natural or crushed sand or other finely divided mineral matter. The composite material shall be free from vegetable matter and lumps or balls of clay, and shall be of such nature that it can be compacted readily to form a firm, stable base.

PCCP (thk= 230mm)

This item shall consist of pavement of Portland Cement Concrete, with or without reinforcement, constructed on the prepared base in accordance with this Specification and in conformity with lines, grades, thickness (230mm) and typical cross section shown on the Plans.

Structural Excavation

This item of work consists of excavation and the disposal of material using backhoe in accordance with this Specification and in conformity with the lines, grades and dimensions shown on the Plans or established by the Engineer.

Backfill

This item shall consist of the construction of embankment from excavated materials in accordance with the specification and in conformity with the lines, grades and dimensions shown on the plans or established by the engineer using plate compactor.

Removal & Disposal of Excavated/ Unsuitable Materials

This item of work consists of removing silt or any unsuitable materials or soil layers using backhoe and dump truck.

Manhole Cover

This item shall consist of the construction, reconstruction or adjustment of manholes, inlets and catch basins in accordance with this Specification and in reasonably close conformity with the lines and grades shown on the Plans or as established by the Engineer.

RCPC (0.60m)

This item shall consist of the construction or reconstruction of pipe culverts and storm drains, hereinafter referred to as “conduit” in accordance with this Specification and in conformity with the lines and grades shown on the Plans or as established by the Engineer.

II. *Improvement of River Dike with View Deck*

Clearing Works

This item shall consist of clearing, grubbing, removing and disposing all vegetation and debris as designated in the Contract, except those objects that are designated to remain in place or are to be removed in consonance with other provisions of this Specification. The work shall also include the preservation from injury or defacement of all objects designated to remain.

Structural Excavation

This item of work consists of excavation and the disposal of material using backhoe in accordance with this Specification and in conformity with the lines, grades and dimensions shown on the Plans or established by the Engineer.

Structural Concrete

This item of work is consist of furnishing, placing and finishing concrete in all structures except pavements in accordance with this Specification and conforming to the lines, grades, and dimensions shown on the Plans.

Reinforcing Steel

This item of work consists of furnishing, bending, fabricating and placing of steel reinforcement all in Grade 40.

Hand-laid Rock Embankment

Hand-Laid Rock Embankment consist of hand-laid rock embankment, as designated in the Bid Schedule, constructed in accordance with this Specification and in conformity with the lines and grades shown on the Plans or established by the Engineer.

Stones shall be sound and durable and furnished in a well-balanced ranged of sizes meeting the requirements herein. Unless otherwise provided by the Plans or Special provisions, all stones shall be more than 0.015 cubic meter in volume and not less than 75 percent of the total volume of rock embankment and shall consists of stones 0.03 cubic meter in volume. Stones obtained from excavation performed under this contract may be used. Adobe stone shall not be used, unless otherwise specified.

Grouted Riprap

This item shall consist of the furnishing and placing of riprap with or without grout as the case may be, with or without filter backing, furnished and constructed in accordance with this Specification and to the lines and grades and dimensions shown on the Plans.

Stones for riprap shall consist of rock as nearly as rectangular in section as is practical, except that riprap of Class A may consist of round natural stones. The stones shall be sound, tough, durable, dense, resistant to the action of air and water, and suitable in all respects for the purpose intended.

Masonry Works

Concrete masonry construction shall include the furnishing of all labor, material, and equipment, and performing all operations necessary to execute all concrete masonry construction, as specified.

Painting Works

This item shall consist of furnishing all paint materials, and other related products, labor, tools, equipment and plant required in undertaking the proper application of painting, and related works indicated on the Plans and in accordance with this Specification. The Contractor prior to commencement of the painting, and related work shall examine the surfaces to be applied in order not to jeopardize the quality and appearance of the painting varnishing and related works.

All surfaces shall be in proper condition to receive the finish Woodworks shall be hand-sanded smooth and dusted clean. All knot-holes pitched pockets or sappy portions shall be sealed with natural wood filler. Nail holes, cracks or defects shall be carefully puttied after the first coat, matching the color of paint.

Concrete and masonry surfaces shall be coated with concrete neutralized allowed to dry before any painting primer coat is applied. When surface is dried apply first coating. Hairline cracks and unevenness shall be patched and sealed with approved putty or patching compound. After all defects are corrected apply the finish coats as specified on the Plans (color schemed approved).

Traffic Management

This item involves directing vehicular and pedestrian traffic around a construction zone or other road disruption through the provision of warning sign, bollards, and barricade caution warning tape, and other devices to regulate, warn, or guide road users in order to attain safe and efficient movement of vehicles, pedestrians, bicyclists, workers, and the general public

Bunkhouse and Other Facilities

This item includes the construction the temporary facilities for the engineer and temporary bunkhouse for rental basis including the power and water supply for the storage of the materials / equipment needed for the whole duration of the project

Occupational Construction Safety and Health

The contractor needs to establish safety goals and objectives develop and implement a written Safety and Health program. The contractor also needs to provide a Part-Time Safety Practitioner and First Aider who undergone training at DOLE/ Red cross respectively.

Project Billboard/ Signboard

Fabrication & installation of plywood size (1.2m x 2.4m) standard billboard with coco lumber frame.

11. Rehabilitation/Improvement of Guinobat River Control, Brgy. Guinobat, Tabaco City

Demolition of Existing Structure

This item of work includes cutting of concrete with the use of concrete cutter, demolition of the damaged concrete using jackhammer with generator and removal of the obstruction using backhoe.

Structure Excavation

This item of work consists of excavation of material in accordance with this Specification and in conformity with the lines, grades and dimensions shown on the Plans or established by the Engineer. The Contractor shall notify the Engineer sufficiently in advance of the beginning of any excavation so that cross-sectional elevations and measurements any be taken on the undisturbed ground. The natural ground adjacent to the structure shall not be disturbed without permission of the Engineer.

Grouted Riprap

This item shall consist of the furnishing and placing of riprap with or without grout as the case may be, with or without filter backing, furnished and constructed in accordance with this Specification and to the lines and grades and dimensions shown on the Plans.

Stones for riprap shall consist of rock as nearly as rectangular in section as is practical, except that riprap of Class A may consist of round natural stones. The stones shall be sound, tough, durable, dense, resistant to the action of air and water, and suitable in all respects for the purpose intended.

Reinforcing Steel Bar

This item of work consists of furnishing, bending, fabricating and placing of steel reinforcement all in Grade 40.

Structural Concrete

This item of work is consist of furnishing, placing and finishing concrete in all structures except pavements in accordance with this Specification and conforming to the lines, grades, and dimensions shown on the Plans.

Formworks

This item shall consist of designing, constructing and removing forms and falsework to temporarily support concrete, girders and other structural elements until the structure is completed to the point it can support itself.

Removal and Disposal of Unsuitable/ Excavated Materials

This item of work consists of removing silt or any unsuitable materials or soil layers using stake truck.

Bunkhouse and Other Facilities

This item includes the construction the temporary facilities for the engineer and temporary bunkhouse for rental basis including the power and water supply for the storage of the materials / equipment needed for the whole duration of the project

Occupational Construction Safety and Health

The contractor needs to establish safety goals and objectives develop and implement a written Safety and Health program. The contractor also needs to provide a Part-Time Safety Practitioner and First Aider who undergone training at DOLE/ Red cross respectively.

Project Billboard/ Signboard

Fabrication & installation of plywood size (1.2m x 2.4m) standard billboard with coco lumber frame.

Traffic Management

This item involves directing vehicular and pedestrian traffic around a construction zone or other road disruption through the provision of warning sign, bollards, and barricade caution warning tape, and other devices to regulate, warn, or guide road users in order to attain safe and efficient movement of vehicles, pedestrians, bicyclists, workers, and the general public.

12. Rehabilitation/Improvement of Bonot River Control, Brgy Bonot, Tabaco City

Clearing & Grubbing

This item shall consist of clearing, grubbing, removing and disposing all vegetation and debris as designated in the Contract, except those objects that are designated to remain in place or are to be

removed in consonance with other provisions of this Specification. The work shall also include the preservation from injury or defacement of all objects designated to remain.

Structure Excavation

This item of work consists of excavation of material in accordance with this specification and in conformity with the lines, grades and dimensions shown on the Plans or established by the Engineer. The Contractor shall notify the Engineer sufficiently in advance of the beginning of any excavation so that cross-sectional elevations and measurements may be taken on the undisturbed ground. The natural ground adjacent to the structure shall not be disturbed without permission of the Engineer.

Grouted Riprap

This item shall consist of the furnishing and placing of riprap with or without grout as the case may be, with or without filter backing, furnished and constructed in accordance with this Specification and to the lines and grades and dimensions shown on the Plans.

Stones for riprap shall consist of rock as nearly as rectangular in section as is practical, except that riprap of Class A may consist of round natural stones. The stones shall be sound, tough, durable, dense, resistant to the action of air and water, and suitable in all respects for the purpose intended.

Reinforcing Steel Bar

This item of work consists of furnishing, bending, fabricating and placing of steel reinforcement all in Grade 40.

Structural Concrete

This item of work is consist of furnishing, placing and finishing concrete in all structures except pavements in accordance with this Specification and conforming to the lines, grades, and dimensions shown on the Plans.

Formworks

This item shall consist of designing, constructing and removing forms and falsework to temporarily support concrete, girders and other structural elements until the structure is completed to the point it can support itself.

RCPC (0.60m)

This item shall consist of the construction or reconstruction of pipe culverts and storm drains, hereinafter referred to as "conduit" in accordance with this Specification and in conformity with the lines and grades shown on the Plans or as established by the Engineer.

Bunkhouse and Other Facilities

This item includes the construction the temporary facilities for the engineer and temporary bunkhouse for rental basis including the power and water supply for the storage of the materials / equipment needed for the whole duration of the project

Occupational Construction Safety and Health

The contractor needs to establish safety goals and objectives develop and implement a written Safety and Health program. The contractor also needs to provide a Part-Time Safety Practitioner and First Aider who undergone training at DOLE/ Red cross respectively.

Project Billboard/ Signboard

Fabrication & installation of plywood size (1.2m x 2.4m) standard billboard with coco lumber frame.

13. Construction of Perimeter Fence (Slope Protection), Karangahan Wellness & Cultural District, Karangahan Blvd, Tabaco City

Survey Works

This item of work shall consist of all field survey and reconnaissance work required to establish horizontal and vertical control sufficient to achieve the specified plan accuracy. Perform sufficient supplementary field survey work to ascertain the true horizontal and vertical location of existing features when an accurate location cannot be determined by the mapping technique used such as culvert sizes and inverts for plan prepared by serial photogrammetry.

Clearing & Grubbing

This item shall consist of clearing, grubbing, removing and disposing all vegetation and debris as designated in the Contract, except those objects that are designated to remain in place or are to be removed in consonance with other provisions of this Specification. The work shall also include the preservation from injury or defacement of all objects designated to remain.

Structure Excavation

This item of work consists of excavation of material in accordance with this specification and in conformity with the lines, grades and dimensions shown on the Plans or established by the Engineer. The Contractor shall notify the Engineer sufficiently in advance of the beginning of any excavation so that cross-sectional elevations and measurements may be taken on the undisturbed ground. The natural ground adjacent to the structure shall not be disturbed without permission of the Engineer.

Embankment (from Excavation)

This item shall consist of the construction of embankment from structure excavation in accordance with this Specification and in conformity with the lines, grades and dimensions shown on the Plans or established by the Engineer. Embankments and backfills shall contain no muck, peat, sod, roots or other deleterious matter. Rocks, broken concrete or other solid, bulky materials shall not be placed in embankment areas where piling is to be placed or driven.

Rubble Concrete Foundation

This item shall consist of the construction of rubble concrete in accordance with this specification and in conformity with the lines, grades, slopes and dimensions shown in the Plans or established by the Engineer.

The stone shall be cleaned, hard, and durable and shall be subject to the Engineer's approval. Adobe stone shall not be used unless otherwise specified. Stones to be used shall be more than 0.015 cubic metre in volume and not less than 75 percent of the total volume of rock embankment and shall consist of stones 0.03 cubic meter in volume. Stones obtained from excavation performed under this contract may be used.

Stone Masonry

This item shall consist of stone masonry in minor structures, in headwalls for culverts, in retaining walls at the toes of slopes, and at other places called for on the Plans, constructed on the prepared foundation bed, in accordance with this Specification and in conformity with the lines, grades, sections, and dimensions shown on the Plans or as ordered in writing by the Engineer.

Bunkhouse and Other Facilities

This item includes the construction the temporary facilities for the engineer and temporary bunkhouse for rental basis including the power and water supply for the storage of the materials / equipment needed for the whole duration of the project.

Occupational Construction Safety and Health

The contractor needs to establish safety goals and objectives develop and implement a written Safety and Health program. The contractor also needs to provide a Part-Time Safety Practitioner and First Aider who undergone training at DOLE/ Red cross respectively.

Project Billboard/ Signboard

Fabrication & installation of plywood size (1.2m x 2.4m) standard billboard with coco lumber frame.

14. Rehabilitation/Improvement of Fence, New Government Center, Brgy Pawa, Tabaco City

A. Earthworks

Clearing & Grubbing

This item shall consist of clearing, grubbing, removing and disposing all vegetation and debris as designated in the Contract, except those objects that are designated to remain in place or are to be removed in consonance with other provisions of this Specification. The work shall also include the preservation from injury or defacement of all objects designated to remain.

Removal of Structures and Obstructions

This item shall consist of the removal wholly or in part, and satisfactory disposal of all buildings, structures, old pavements, abandoned pipe lines, and any other obstructions which are not designated or permitted to remain, except for the obstructions to be removed and disposed of under other items in the Contract. It shall also include the salvaging of designated materials and backfilling the resulting trenches, holes, and pits.

Structure Excavation (Common Soil)

This item shall consist of the necessary excavation for foundation of slope protection and other structures not otherwise provided for in the Specifications accordance with this Specification and in conformity with the lines, grades and dimensions shown on the Plans or established by the Engineer.

Embankment (from Excavation)

This item shall consist of the construction of embankment from structure excavation in accordance with the specification and in conformity with the lines, grades and dimensions shown on the plans or established by the engineer.

Gravel Fill

This item shall consist of placing 0.10m thick gravel fill in accordance with the specification and in conformity with the lines, grades and dimensions shown on the plans or established by the engineer.

B. Plain and Reinforced Concrete Works

Structural Concrete

This item of work is consist of furnishing, placing and finishing concrete in all structures except pavements in accordance with this Specification and conforming to the lines, grades, and dimensions shown on the Plans.

Reinforcing Steel (Deformed, Grade 40)

This item of work consists of furnishing, bending, fabricating and placing of steel reinforcement all in Grade 40.

Formworks and False Works

This item shall consist of designing, constructing and removing forms and falsework to temporarily support concrete, girders and other structural elements until the structure is completed to the point it can support itself.

C. Finishing and False Works

Cement Plaster Finish

This item shall consist of furnishing all cement plaster materials, labor, tools and equipment required in undertaking cement plaster finish as shown on the Plans and in accordance with this Specification. All concrete surfaces including those indicated as cement plaster on drawings, in all interior walls and other concrete surfaces without specified finish, shall be done and applied in accordance with the Plans or established by the Engineer.

CHB Non Load Bearing, 5"thk (incl RSB)

This item shall consist of furnishing and placing of CHB Non Load Bearing, 5" thick including reinforcing steel bar. Concrete masonry construction shall include the furnishing of all labor, material, and equipment, and performing all operations necessary to execute all concrete masonry construction, as specified.

D. Other General Requirements

Provision of Bunkhouse (Rental Basis) & Other Facilities

This item includes the construction the temporary facilities for the engineer and temporary bunkhouse for rental basis including the power and water supply for the storage of the materials / equipment needed for the whole duration of the project

Project & Community Billboard/ Signboard

Fabrication & installation of plywood size (1.2m x 2.4m) standard billboard with coco lumber frame.

Occupational Safety and Health Program

The contractor needs to establish safety goals and objectives develop and implement a written Safety and Health program. The contractor also needs to provide a Part-Time Safety Practitioner and First Aider who undergone training at DOLE/ Red cross respectively.

15. Rehabilitation/Improvement of Perimeter Fence, Central MRF, Brgy San Vicente, Tabaco City

A. Earthworks

Clearing & Grubbing

This item shall consist of clearing, grubbing, removing and disposing all vegetation and debris as designated in the Contract, except those objects that are designated to remain in place or are to be removed in consonance with other provisions of this Specification. The work shall also include the preservation from injury or defacement of all objects designated to remain.

Removal of Structures and Obstructions

This item shall consist of the removal wholly or in part, and satisfactory disposal of all buildings, structures, old pavements, abandoned pipe lines, and any other obstructions which are not designated or permitted to remain, except for the obstructions to be removed and disposed of under other items in the Contract. It shall also include the salvaging of designated materials and backfilling the resulting trenches, holes, and pits.

Structure Excavation (Common Soil)

This item shall consist of the necessary excavation for foundation of slope protection and other structures not otherwise provided for in the Specifications accordance with this Specification and in conformity with the lines, grades and dimensions shown on the Plans or established by the Engineer.

Embankment (from Excavation)

This item shall consist of the construction of embankment from structure excavation in accordance with the specification and in conformity with the lines, grades and dimensions shown on the plans or established by the engineer.

Gravel Fill

This item shall consist of placing 0.10m thick gravel fill in accordance with the specification and in conformity with the lines, grades and dimensions shown on the plans or established by the engineer.

B. Plain and Reinforced Concrete Works

Structural Concrete

This item of work is consist of furnishing, placing and finishing concrete in all structures except pavements in accordance with this Specification and conforming to the lines, grades, and dimensions shown on the Plans.

Reinforcing Steel (Deformed, Grade 40)

This item of work consists of furnishing, bending, fabricating and placing of steel reinforcement all in Grade 40.

Formworks and False Works

This item shall consist of designing, constructing and removing forms and falsework to temporarily support concrete, girders and other structural elements until the structure is completed to the point it can support itself.

C. Finishing and Other Civil Works

Cement Plaster Finish

This item shall consist of furnishing all cement plaster materials, labor, tools and equipment required in undertaking cement plaster finish as shown on the Plans and in accordance with this Specification. All concrete surfaces including those indicated as cement plaster on drawings, in all interior walls and other concrete surfaces without specified finish, shall be done and applied in accordance with plans or established by the Engineer.

CHB Non Load Bearing, 5" thk (incl RSB)

This item shall consist of furnishing and placing of CHB Non Load Bearing, 5" thick including reinforcing steel bar. Concrete masonry construction shall include the furnishing of all labor, material, and equipment, and performing all operations necessary to execute all concrete masonry construction, as specified.

Installation of Barbed Wire

This specification shall govern all work required for furnishing and installing all barbed wire fences required to complete the project in accordance with Plans or established by the Engineer.

D. Other General Requirements

Provision of Bunkhouse (Rental Basis) & Other Facilities

This item includes the construction the temporary facilities for the engineer and temporary bunkhouse for rental basis including the power and water supply for the storage of the materials / equipment needed for the whole duration of the project

Project & Community Billboard/ Signboard

Fabrication & installation of plywood size (1.2m x 2.4m) standard billboard with coco lumber frame.

Occupational Safety and Health Program

The contractor needs to establish safety goals and objectives develop and implement a written Safety and Health program. The contractor also needs to provide a Part-Time Safety Practitioner and First Aider who undergone training at DOLE/ Red cross respectively.

Section VII. Drawings

Copy of the Plans and Drawings can be found online at:

https://drive.google.com/drive/folders/14UAXIcyHEJMuKARDbC_8b8xb0NniFtb2?usp=sharing

Section VIII. Bill of Quantities

Procuring Entity: City Government of Tabaco City

Contract ID No. 021-08-2022-INFRA

Name of the Project: Construction/Rehabilitation/Improvement of Various Public Infrastructures (Roadways, River Control & Fence)

Project Location: Various Barangays, Tabaco City

BILL OF QUANTITIES

Item No.	Description of Work to be Done		Qty	Unit	Unit Price (Php)	Total Amount (Php)
A.	ROADWAYS					
1	Rehabilitation/Improvement of Mariroc Roadways, Sitio Nagsipit, Brgy. Mariroc, Tabaco City					
	1	Concrete Cutting & Demolition of Existing Damaged Concrete Pavement	1,458.00	sq.m		
	2	Subgrade Preparation	1,458.00	sq.m.		
	3	Aggregate Base Course	218.70	cu.m		
	4	Portland Cement Concrete Pavement (t=0.23m)	1,458.00	sq.m		
	5	Removal & Disposal of Excavated/ Unsuitable Materials	164.03	cu.m		
	6	Traffic Management	1.00	l.s		
	7	Bunkhouse (Rental Basis) and Other Facilities	1.00	l.s		
	8	Occupational Construction Safety and Health	1.00	l.s		
	9	Project Billboard/Signboard	1.00	unit		
	<i>Subtotal</i>					
2	Rehabilitation/Improvement of Panal Roadways, Brgy. Panal, Tabaco City					
	SPL - 1	Concrete Cutting of Existing PCCP & Demolition of Obstruction	695.00	sq.m.		
	105	Subgrade Preparation	695.00	sq.m.		
	201	Aggregate Base Course	104.25	m ³		
	311	PCCP (thk=0.23m)	695.00	sq.m.		
	500	Pipe Culvert, 0.45m ø	8.00	l.m		
	SPL - 2	Removal & Disposal of Excavated Mat'ls	93.83	cu.m		
	SPL - 3	Traffic Management	1.00	l.s		
	SPL - 4	Bunkhouse (Rental Basis) & Other Facilities	1.00	l.s		
	SPL - 5	Occupational Safety & Health Program	1.00	l.s		
	SPL - 6	Fab/Installation of Billboards	1.00	unit		
	<i>Subtotal</i>					
3	Rehabilitation/Improvement of San Carlos Roadways, Brgy. San Carlos, Tabaco City					
	A.	Road Reblocking				
	I	Concrete Cutting of Existing PCCP & Demolition of Obstruction	553.50	sq.m		
	II	Embankment	101.84	cu.m		
	III	Aggregate Base Course	135.79	cu.m		
	IV	PCCP (230mm thk)	787.20	sq.m		
	V	Removal & Disposal of Excavated/ Unsuitable Materials	110.70	cu.m		
	B.	Box Culvert Drainage				
	I	Demolition & Removal of Obstruction	51.60	sq.m		
	II	Excavation Works	8.60	cu.m		
	III	Structural Concrete	42.06	cu.m		
	IV	Reinforcing Steel	4,474.75	kgs		
	V	Formworks	378.40	sq.m		

	VI	Manhole Cover With Inlet	15.00	unit		
	VII	Restoration of Damaged Structure	154.80	sq.m		
	C.	Other General Requirements				
	I	Bunkhouse (Rental Basis) and Other Facilities	1.00	l.s		
	II	Project Billboard/Signboard	1.00	unit		
	III	Occupational Construction Safety and Health	1.00	l.s		
	IV	Traffic Management	1.00	l.s		
	<i>Subtotal</i>					
4	Rehabilitation/Improvement of San Lorenzo Roadways, Brgy. San Lorenzo, Tabaco City					
	I	Demolition & Removal of Obstruction	157.20	sq.m		
	II	Embankment	108.47	cu.m		
	III	Excavation Works	26.20	cu.m		
	IV	Structural Concrete	143.03	cu.m		
	V	Reinforcing Steel	13,598.34	kgs		
	VI	Formworks	1,152.80	sq.m		
	VII	Manhole Cover With Inlet	22.00	unit		
	VIII	Restoration Of Damaged Structure	60.00	sq.m		
	IX	Bunkhouse (Rental Basis) and Other Facilities	1.00	l.s		
	X	Project Billboard/Signboard	1.00	unit		
	XI	Occupational Construction Safety and Health	1.00	l.s		
	XII	Traffic Management	1.00	l.s		
	<i>Subtotal</i>					
5	Rehabilitation/Improvement of Quinastillojan Roadways, Brgy. Quinastillojan, Tabaco City					
	A.	Slope Protection				
	I	Clearing & Grubbing	316.50	sq.m		
	II	Structural Excavation	139.26	cu.m		
	III	Handlaid Rock Embankment	190.90	cu.m		
	IV	Grouted Riprap	151.92	sq.m		
	V	Reinforcing Steel Bars	5,109.23	sq.m		
	VI	Structural Concrete	93.90	sq.m		
	VII	Formworks	422.00	sq.m		
	B.	Roadway				
	I	Concrete Cutting of Existing Pavement	65.00	sq.m		
	II	Aggregate Base Course	9.75	sq.m		
	III	PCCP (thk= 230mm)	65.00	sq.m		
	IV	Removal & Disposal Of Unsuitable Materials	13.00	cu.m		
	C.	Other General Requirements				
	I	Bunkhouse (Rental Basis) and Other Facilities	1.00	l.s		
	II	Project Billboard/Signboard	1.00	unit		
	III	Occupational Construction Safety and Health	1.00	l.s		
	IV	Traffic Management	1.00	l.s		
	<i>Subtotal</i>					
6	Rehabilitation/Improvement of Buhian Roadways, Brgy. Buhian, Tabaco City					
	I	Clearing & Grubbing	420.00	sq.m		
	II	Demolition & Removal of Obstruction	210.00	sq.m		
	III	Structural Excavation	151.20	cu.m		
	IV	Embankment From Structure Excavation	50.40	cu.m		
	V	RCPC, 0.90m Ø	210.00	L.m		
	VI	Subgrade Preparation	462.00	sq.m		
	VII	Aggregate Base Course	79.70	cu.m		
	VIII	PCCP, 230mm Thk	462.00	sq.m		

	IX	Manhole Cover with Inlet	36.00	unit			
	X	Removal & Disposal of Excavated/ Unsuitable Materials	132.30	cu.m			
	XI	Bunkhouse (Rental Basis) and Other Facilities	1.00	l.s			
	XII	Project Billboard/Signboard	1.00	unit			
	XIII	Occupational Construction Safety and Health	1.00	l.s			
	XIV	Traffic Management	1.00	l.s			
	Subtotal						
7	Rehabilitation/Improvement of Fatima Roadways, Brgy. Fatima, Tabaco City						
	A.	Single Barrel Box Culvert					
	I	Demolition & Removal of Obstruction	67.50	sq.m			
	II	Structural Excavation	19.17	cu.m			
	III	Boulder Embankment	4.50	cu.m			
	IV	Structural Concrete	30.53	cu.m			
	V	Reinforcing Steel	7,576.63	kgs			
	VI	Formworks	117.06	sq.m			
	VII	Guardrails	9.00	l.m			
	VIII	Removal & Disposal of Excavated/Unsuitable Materials	32.67	cu.m			
	B.	PCCP (230mm)					
	I	Concrete Cutting of Existing Pavement	112.50	sq.m			
	II	Demolition of Obstruction	225.00	cu.m			
	III	Aggregate Base Course	34.93	cu.m			
	IV	PCCP (230mm Thk)	225.00	sq.m			
	V	Restoration of Damaged Structure	54.00	sq.m			
	VI	Removal & Disposal of Unsuitable Materials	22.50	cu.m			
	C.	Slope Protection					
	I	Structural Excavation	42.24	cu.m			
	II	Grouted Riprap	79.20	cu.m			
	III	Structural Concrete	90.20	cu.m			
	IV	Reinforcing Steel	4,866.15	cu.m			
	V	Formworks	87.00	sq.m			
	VI	Removal & Disposal of Excavated/Unsuitable Materials	42.24	cu.m			
	D.	Other General Requirements					
	I	Bunkhouse (Rental Basis) and Other Facilities	1.00	l.s			
	II	Project Billboard/Signboard	1.00	unit			
	III	Occupational Construction Safety and Health	1.00	l.s			
	IV	Traffic Management	1.00	l.s			
	Subtotal						
8	Rehabilitation/Improvement of Oson-Magapo Roadways, Brgy. Oson, Tabaco City						
	1	Clearing & Grubbing	862.00	sq.m			
	2	Surplus Common Excavation	188.56	cu.m			
	3	Structure Excavation	3.50	cu.m			
	4	Embankment (from Excavation)	188.56	cu.m			
	5	Rubble Concrete	2.40	cu.m			
	6	Grouted Riprap	3.00	cu.m			
	7	Subgrade Preparation	862.00	sq.m.			
	8	Aggregate Base Course	129.30	cu.m			
	9	Portland Cement Concrete Pavement (t=0.15m)	862.00	sq.m			
	10	Bunkhouse (Rental Basis) and Other Facilities	1.00	l.s			

	11	Occupational Construction Safety and Health	1.00	l.s		
	12	Project Billboard/Signboard	1.00	unit		
	<i>Subtotal</i>					
9	Rehabilitation/Improvement of Sto. Cristo Roadways, Brgy. Sto. Cristo , Tabaco City					
	A.	Concrete Cutting of Existing PCCP & Demolition of Obstruction	149.17	sqm		
	B.	Excavation	77.58	cu.m.		
	C.	Backfill	43.71	cu.m.		
	D.	Removal and Disposal of Unsuitable/Excavated Materials	56.24	cum.		
	E.	RCPC (0.60m Ø)	23.00	ln.m		
	F.	Manhole W/ Cover & Inlet	3.00	unit		
	G.	Restoration Works	19.27	sqm		
	H.	Subgrade Preparation	176.70	sqm		
	I.	Aggregate Base Course	25.20	cum		
	J.	Portland Cement Concrete Pavement (0.15m Thk)	188.40	sqm		
	K.	Reinforcing Steel	944.04	kgs		
	L.	Structural Concrete	13.77	cum		
	M.	Traffic Management	1.00	l.s		
	N.	Bunkhouse and Other Facilities	1.00	l.s		
	O.	Occupational Safety and Health Program	1.00	l.s		
	P.	Fab/Installation of Billboards	1.00	unit		
	<i>Subtotal</i>					
10	Rehabilitation/Improvement of Basud Roadways, Brgy. Basud, Tabaco City					
	Item I	Repair/Rehabilitation of Damaged Pavement with Drainage System				
	A.	Removal and Disposal of Unsuitable (0.15mm thk PCCP)	40.05	cum		
	B.	Subgrade Preparation	445.00	sqm		
	C.	Aggregate Base Course	66.75	cum		
	D.	Portland Cement Concrete Pavement	102.35	cum		
	E.	Excavation	64.49	cu.m.		
	F.	Backfill	35.21	cu.m.		
	G.	Removal and Disposal of Unsuitable/Excavated Materials	29.28	cu.m.		
	H.	Manhole with Cover	10.00	units		
	I.	RCPC (0.61 m Ø)	31.00	l.m		
	Item II	Improvement of River Dike with View Deck				
	A.	Clearing Works	34.40	sqm		
	B.	Structural Excavation	14.76	cum.		
	C.	Structural Concrete	16.42	cum.		
	D.	Reinforcing Steel	1,407.16	kgs		
	E.	Handlaid Rock Embankment	27.52	cum.		
	F.	Grouted Riprap	16.13	cum		
	G.	Masonry Works	25.24	sq.m.		
	H.	Painting Works	25.24	sq.m.		
	Item III	Traffic Management	1.00	l.s		
	Item IV	Bunkhouse and Other Facilities	1.00	l.s		
	Item V	Occupational Safety and Health Program	1.00	l.s		
	Item VI	Fab/Installation of Billboards	1.00	unit		
	<i>Subtotal</i>					
B.	RIVER CONTROL					
11	Rehabilitation/Improvement of Guinobat River Control, Brgy. Guinobat, Tabaco City					
	I	Demolition of Existing Structure	450.00	sq.m		
	II	Structural Excavation	77.42	cu.m		
	III	Grouted Riprap	179.46	cu.m		

	IV	Reinforcing Steel	7,233.76	kgs		
	V	Structural Concrete	115.15	cu.m		
	VI	Formworks	630.00	sq.m		
	VII	Removal & Disposal of Excavated/ Unsuitable Materials	77.42	cu.m		
	VIII	Bunkhouse (Rental Basis) and Other Facilities	1.00	l.s		
	IX	Project Billboard/Signboard	1.00	unit		
	X	Occupational Construction Safety and Health	1.00	l.s		
	XI	Traffic Management	1.00	l.s		
	<i>Subtotal</i>					
12	Rehabilitation/Improvement of Bonot River Control, Brgy. Bonot, Tabaco City					
	I	Clearing and Grubbing	384.00	sq.m		
	II	Structural Excavation	76.80	cu.m		
	III	Grouted Riprap	147.20	cu.m		
	IV	Reinforcing Steel	7,530.30	kgs		
	V	Structural Concrete	119.04	cu.m		
	VI	Formworks	537.60	sq.m		
	VII	Removal & Disposal of Excavated/ Unsuitable Materials	76.80	cu.m		
	VIII	RCPC, 0.60m Ø	7.00	L.m		
	IX	Bunkhouse (Rental Basis) and Other Facilities	1.00	l.s		
	X	Project Billboard/Signboard	1.00	unit		
	XI	Occupational Construction Safety and Health	1.00	l.s		
	<i>Subtotal</i>					
C.	FENCE					
13	Construction of Perimeter Fence (Slope Protection), Karangahan Wellness & Cultural District, Karangahan Blvd, Tabaco City					
	1	Survey Works	1.00	lot		
	2	Clearing & Grubbing	216.00	m ²		
	3	Structure Excavation	155.52	cu.m		
	4	Embankment (from structure excavation)	139.97	cu.m		
	5	Rubble Concrete Foundation	129.60	cu.m.		
	6	Stone Masonry	216.00	cu.m		
	SPL-1	Bunkhouse (Rental Basis) and Other Facilities	1.00	l.s		
	SPL-2	Occupational Construction Safety and Health	1.00	l.s		
	SPL-3	Project Billboard/Signboard	1.00	unit		
	<i>Subtotal</i>					
14	Rehabilitation/Improvement of Fence, New Government Center, Brgy. Pawa, Tabaco City					
	Part A	Earthworks				
	800(1)	Clearing & Grubbing	283.50	sq.m.		
	801(3)	Removal of Structures and Obstruction	54.00	sq.m.		
	803(1)a	Structure Excavation (Common Soil)	102.92	cu.m.		
	804(1)a	Embankment (From Structure Excavation)	71.18	cu.m.		
	804(4)	Gravel Fill	13.55	cu.m.		
	Part B	Plain And Reinforced Concrete Works				
	900	Structural Concrete	38.94	cu.m.		
	902(1)a	Reinforcing Steel (Deformed, Grade 40)	3,274.62	kgs		
	903(2)	Formworks and False Works	156.80	sq.m.		
	Part C	Finishing And Other Civil Works				
	1027(1)	Cement Plaster Finish	831.60	sq.m.		

	1046	CHB Non Load Bearing, 5" thk (Incl. RSB)	415.80	sq.m.		
	Part D	Other General Requirements				
	SPL-1	Provision of Bunkhouse (Rental Basis) & Other Facilities	1.00	l.s.		
	B.5	Project & Community Billboard/Signboard	1.00	unit		
	B.7(2)	Occupational Safety and Health Program	1.00	l.s.		
	<i>Subtotal</i>					
15	Construction of Perimeter Fence, Central MRF, Brgy. San Vicente, Tabaco City					
	Part A	Earthworks				
	800(1)	Clearing & Grubbing	278.25	sq.m.		
	803(1)a	Structure Excavation (Common Soil)	100.50	cu.m.		
	804(1)a	Embankment (From Structure Excavation)	69.51	cu.m.		
	804(4)	Gravel Fill	13.24	cu.m.		
	Part B	Plain And Reinforced Concrete Works				
	900	Structural Concrete	37.96	cu.m.		
	902(1)a	Reinforcing Steel (Deformed, Grade 40)	3,180.13	kgs		
	903(2)	Formworks and False Works	151.90	sq.m.		
	Part C	Finishing And Other Civil Works				
	1027(1)	Cement Plaster Finish	816.20	sq.m.		
	1046	CHB Non Load Bearing, 5" thk (Incl. RSB)	408.10	sq.m.		
	SPL-1	Installation of Barbed Wire	185.50	l.m		
	Part D	Other General Requirements				
	SPL-1	Provision of Bunkhouse (Rental Basis) & Other Facilities	1.00	l.s.		
	B.5	Project & Community Billboard/Signboard	1.00	unit		
	B.7(2)	Occupational Safety and Health Program	1.00	l.s.		
	<i>Subtotal</i>					
	TOTAL					

Name of the Company/Bidder	Name of Authorized Representative	Signature of Authorized Representative

Section IX. Checklist of Technical and Financial Documents

Checklist of Technical and Financial Documents

I. TECHNICAL COMPONENT ENVELOPE

Class “A” Documents

Legal Documents

- (a) Valid PhilGEPS Registration Certificate (Platinum Membership) (all pages) in accordance with Section 8.5.2 of the IRR;

Technical Documents

- (b) Statement of the prospective bidder of all its ongoing government and private contracts, including contracts awarded but not yet started, if any, whether similar or not similar in nature and complexity to the contract to be bid; **and**
- (c) Statement of the bidder’s Single Largest Completed Contract (SLCC) similar to the contract to be bid, except under conditions provided under the rules; **and**
- (d) Special PCAB License in case of Joint Ventures; **and** registration for the type and cost of the contract to be bid; **and**
- (e) Original copy of Bid Security. If in the form of a Surety Bond, submit also a certification issued by the Insurance Commission; **or** Original copy of Notarized Bid Securing Declaration; **and**
- (f) Project Requirements, which shall include the following:
 - a. Organizational chart for the contract to be bid;
 - b. List of contractor’s key personnel (*e.g.*, Project Manager, Project Engineers, Materials Engineers, and Foremen), to be assigned to the contract to be bid, with their complete qualification and experience data;
 - c. List of contractor’s major equipment units, which are owned, leased, and/or under purchase agreements, supported by proof of ownership or certification of availability of equipment from the equipment lessor/vendor for the duration of the project, as the case may be; **and**
- (g) Original duly signed Omnibus Sworn Statement (OSS); **and** if applicable, Original Notarized Secretary’s Certificate in case of a corporation, partnership, or cooperative; or Original Special Power of Attorney of all members of the joint venture giving full power and authority to its officer to sign the OSS and do acts to represent the Bidder.

Financial Documents

- (h) The prospective bidder’s computation of Net Financial Contracting Capacity (NFCC).

Class “B” Documents

- (i) If applicable, duly signed joint venture agreement (JVA) in accordance with RA No. 4566 and its IRR in case the joint venture is already in existence; **or** duly notarized statements from all the potential joint venture partners stating

that they will enter into and abide by the provisions of the JVA in the instance that the bid is successful.

II. FINANCIAL COMPONENT ENVELOPE

- (j) Original of duly signed and accomplished Financial Bid Form; **and**

Other documentary requirements under RA No. 9184

- (k) Original of duly signed Bid Prices in the Bill of Quantities; **and**
- (l) Duly accomplished Detailed Estimates Form, including a summary sheet indicating the unit prices of construction materials, labor rates, and equipment rentals used in coming up with the Bid; **and**
- (m) Cash Flow by Quarter.

Annex A. Forms & Templates

Name of the Procuring Entity: *LGU-Tabaco City*

Contract ID No. *021-08-2022-INFRA*

Name of the Project: *Construction/Rehabilitation/Improvement of Various Public Infrastructures (Roadways, River Control & Fence)*

Project Location: *Various Barangays, Tabaco City*

Statement of SINGLE LARGEST COMPLETED CONTRACT (SLCC) which is similar in nature

Business Name : _____

Business Address : _____

Name of Contract	a. Owner Name b. Address c. Telephone Nos.	Nature of Work	Contractor's Role		a. Amount at Award b. Amount at Completion c. Duration	a. Date Awarded b. Contract Effectivity c. Date Completed
			Description	%		

Note: This statement shall be supported with:

- 1 Notice of Award and/ or Notice to Proceed;**
- 2 Owner's Certificate of Final Acceptance or Completion, or**
- 3 CPES Satisfactory Final Rating**

Submitted by : _____
(Printed Name & Signature)

Designation : _____

Date : _____

Name of the Procuring Entity: *LGU-Tabaco City*

Contract ID No. *021-08-2022-INFRA*

Name of the Project: *Construction/Rehabilitation/ Improvement of Various Public Infrastructures (Roadways, River Control & Fence)*

Project Location: *Various Barangays, Tabaco City*

Net Financial Contracting Capacity (NFCC)

- A. Summary of the Applicant Supplier's/Distributor's/Manufacturer's assets and liabilities on the basis of the attached income tax return and audited financial statement, stamped "RECEIVED" by the Bureau of Internal Revenue or BIR authorized collecting agent, for the immediately preceding year and a certified copy of Schedule of Fixed Assets particularly the list of construction equipment.

		Year 20__
1.	Total Assets	
2.	Current Assets	
3.	Total Liabilities	
4.	Current Liabilities	
5.	Net Worth (1-3)	
6.	Net Working Capital (2-4)	

- B. The Net Financial Contracting Capacity (NFCC) based on the above data is computed as follows:

NFCC = 15 (current asset – current liabilities) minus value of all outstanding works under ongoing contracts including awarded contracts yet to be started

NFCC = P _____

Herewith attached are certified true copies of the income tax return and audited financial statement: stamped "RECEIVED" by the BIR or BIR authorized collecting agent for the immediately preceding year.

Submitted by:

Name of Supplier / Distributor / Manufacturer

Signature of Authorized Representative

Date : _____

Bid Securing Declaration Form

[shall be submitted with the Bid if bidder opts to provide this form of bid security]

REPUBLIC OF THE PHILIPPINES)
CITY OF _____) S.S.

BID SECURING DECLARATION **Project Identification No.: 021-08-2022-INFRA**

To: **The City Government of Tabaco**
Tabaco City

I/We, the undersigned, declare that:

1. I/We understand that, according to your conditions, bids must be supported by a Bid Security, which may be in the form of a Bid Securing Declaration.
2. I/We accept that: (a) I/we will be automatically disqualified from bidding for any procurement contract with any procuring entity for a period of two (2) years upon receipt of your Blacklisting Order; and, (b) I/we will pay the applicable fine provided under Section 6 of the Guidelines on the Use of Bid Securing Declaration, within fifteen (15) days from receipt of the written demand by the procuring entity for the commission of acts resulting to the enforcement of the bid securing declaration under Sections 23.1(b), 34.2, 40.1 and 69.1, except 69.1(f), of the IRR of RA No. 9184; without prejudice to other legal action the government may undertake.
3. I/We understand that this Bid Securing Declaration shall cease to be valid on the following circumstances:
 - a. Upon expiration of the bid validity period, or any extension thereof pursuant to your request;
 - b. I am/we are declared ineligible or post-disqualified upon receipt of your notice to such effect, and (i) I/we failed to timely file a request for reconsideration or (ii) I/we filed a waiver to avail of said right; and
 - c. I am/we are declared the bidder with the Lowest Calculated Responsive Bid, and I/we have furnished the performance security and signed the Contract.

IN WITNESS WHEREOF, I/We have hereunto set my/our hand/s this ____ day of [month] [year] at [place of execution].

*[Insert NAME OF BIDDER OR ITS AUTHORIZED
REPRESENTATIVE]*

[Insert signatory's legal capacity]

Affiant

[Jurat]

[Format shall be based on the latest Rules on Notarial Practice]

Name of the Procuring Entity: **LGU-Tabaco City**

Contract ID No. **021-08-2022-INFRA**

Name of the Project: **Construction/Rehabilitation/ Improvement of Various Public Infrastructures (Roadways, River Control & Fence)**

Project Location: **Various Barangays, Tabaco City**

QUALIFICATION OF KEY PERSONNEL PROPOSED TO BE ASSIGNED TO THE CONTRACT

Business Name : _____

Business Address: _____

	Project Manager	Project Engineer	Materials Engineer	Construction Foreman	Safety Officer	First Aider	Other positions deemed required by the Applicant for this project
1 Name							
2 Address							
3 Date of Birth							
4 Employed Since							
5 Experience							
6 Previous Employment							
7 Education							
8 PRC License							

Note: Attach individual resume and PRC License of the (professional) personnel

Submitted by : _____
(Printed Name & Signature)

Designation : _____

Date : _____

Name of the Procuring Entity: **LGU-Tabaco City**

Contract ID No. **021-08-2022-INFRA**

Name of the Project: **Construction/Rehabilitation/ Improvement of Various Public Infrastructures (Roadways, River Control & Fence)**

Project Location: **Various Barangays, Tabaco City**

List of Equipment, Owned or Leased and/or under Purchase Agreements, Pledged to the Proposed Contract

Business Name : _____

Business Address: _____

Description	Quantity	Model/ Year	Capacity / Performance / Size	Plate No.	Motor No. / Body No.	Location	Condition	Proof of Ownership / Lessor or Vendor
<u>A. Owned</u>								
i.								
ii.								
iii.								
iv.								
v.								
<u>B. Leased</u>								
i.								
ii.								
<u>iii.</u>								
iv.								
v.								
<u>C. Under Purchase Agreements</u>								
i.								
ii.								
iii.								
iv.								

Submitted by : _____

(Printed Name & Signature)

Designation : _____

Date : _____

Omnibus Sworn Statement (Revised)

[shall be submitted with the Bid]

REPUBLIC OF THE PHILIPPINES)
CITY/MUNICIPALITY OF _____) S.S.

AFFIDAVIT

I, [Name of Affiant], of legal age, [Civil Status], [Nationality], and residing at [Address of Affiant], after having been duly sworn in accordance with law, do hereby depose and state that:

1. *[Select one, delete the other:]*

[If a sole proprietorship:] I am the sole proprietor or authorized representative of [Name of Bidder] with office address at [address of Bidder];

[If a partnership, corporation, cooperative, or joint venture:] I am the duly authorized and designated representative of [Name of Bidder] with office address at [address of Bidder];

2. *[Select one, delete the other:]*

[If a sole proprietorship:] As the owner and sole proprietor, or authorized representative of [Name of Bidder], I have full power and authority to do, execute and perform any and all acts necessary to participate, submit the bid, and to sign and execute the ensuing contract for [Name of the Project] of the [Name of the Procuring Entity], as shown in the attached duly notarized Special Power of Attorney;

[If a partnership, corporation, cooperative, or joint venture:] I am granted full power and authority to do, execute and perform any and all acts necessary to participate, submit the bid, and to sign and execute the ensuing contract for [Name of the Project] of the [Name of the Procuring Entity], as shown in the attached [state title of attached document showing proof of authorization (e.g., duly notarized Secretary's Certificate, Board/Partnership Resolution, or Special Power of Attorney, whichever is applicable)];

3. [Name of Bidder] is not "blacklisted" or barred from bidding by the Government of the Philippines or any of its agencies, offices, corporations, or Local Government Units, foreign government/foreign or international financing institution whose blacklisting rules have been recognized by the Government Procurement Policy Board, by itself or by relation, membership, association, affiliation, or controlling interest with another blacklisted person or entity as defined and provided for in the Uniform Guidelines on Blacklisting;

4. Each of the documents submitted in satisfaction of the bidding requirements is an authentic copy of the original, complete, and all statements and information provided therein are true and correct;

5. [Name of Bidder] is authorizing the Head of the Procuring Entity or its duly authorized representative(s) to verify all the documents submitted;

6. *[Select one, delete the rest:]*

[If a sole proprietorship:] The owner or sole proprietor is not related to the Head of the Procuring Entity, members of the Bids and Awards Committee (BAC), the Technical

Working Group, and the BAC Secretariat, the head of the Project Management Office or the end-user unit, and the project consultants by consanguinity or affinity up to the third civil degree;

[If a partnership or cooperative:] None of the officers and members of *[Name of Bidder]* is related to the Head of the Procuring Entity, members of the Bids and Awards Committee (BAC), the Technical Working Group, and the BAC Secretariat, the head of the Project Management Office or the end-user unit, and the project consultants by consanguinity or affinity up to the third civil degree;

[If a corporation or joint venture:] None of the officers, directors, and controlling stockholders of *[Name of Bidder]* is related to the Head of the Procuring Entity, members of the Bids and Awards Committee (BAC), the Technical Working Group, and the BAC Secretariat, the head of the Project Management Office or the end-user unit, and the project consultants by consanguinity or affinity up to the third civil degree;

7. *[Name of Bidder]* complies with existing labor laws and standards; and
8. *[Name of Bidder]* is aware of and has undertaken the responsibilities as a Bidder in compliance with the Philippine Bidding Documents, which includes:
 - a. Carefully examining all of the Bidding Documents;
 - b. Acknowledging all conditions, local or otherwise, affecting the implementation of the Contract;
 - c. Making an estimate of the facilities available and needed for the contract to be bid, if any; and
 - d. Inquiring or securing Supplemental/Bid Bulletin(s) issued for the *[Name of the Project]*.
9. *[Name of Bidder]* did not give or pay directly or indirectly, any commission, amount, fee, or any form of consideration, pecuniary or otherwise, to any person or official, personnel or representative of the government in relation to any procurement project or activity.
10. In case advance payment was made or given, failure to perform or deliver any of the obligations and undertakings in the contract shall be sufficient grounds to constitute criminal liability for Swindling (Estafa) or the commission of fraud with unfaithfulness or abuse of confidence through misappropriating or converting any payment received by a person or entity under an obligation involving the duty to deliver certain goods or services, to the prejudice of the public and the government of the Philippines pursuant to Article 315 of Act No. 3815 s. 1930, as amended, or the Revised Penal Code.

IN WITNESS WHEREOF, I have hereunto set my hand this ___ day of ___, 20__ at _____, Philippines.

[Insert NAME OF BIDDER OR ITS AUTHORIZED REPRESENTATIVE]

[Insert signatory's legal capacity]

Affiant

[Jurat]

[Format shall be based on the latest Rules on Notarial Practice]

Bid Form for the Procurement of Infrastructure Projects

BID FORM

Date : _____
Project Identification No.: 021-08-2022-INFRA.

To: *[name and address of Procuring Entity]*

Having examined the Philippine Bidding Documents (PBDs) including the Supplemental or Bid Bulletin Numbers *[insert numbers]*, the receipt of which is hereby duly acknowledged, we, the undersigned, declare that:

- a. We have no reservation to the PBDs, including the Supplemental or Bid Bulletins, for the Procurement Project: *[insert name of contract]*;
- b. We offer to execute the Works for this Contract in accordance with the PBDs;
- c. The total price of our Bid in words and figures, excluding any discounts offered below is: *[insert information]*;
- d. The discounts offered and the methodology for their application are: *[insert information]*;
- e. The total bid price includes the cost of all taxes, such as, but not limited to: *[specify the applicable taxes, e.g. (i) value added tax (VAT), (ii) income tax, (iii) local taxes, and (iv) other fiscal levies and duties]*, which are itemized herein and reflected in the detailed estimates,
- f. Our Bid shall be valid within the a period stated in the PBDs, and it shall remain binding upon us at any time before the expiration of that period;
- g. If our Bid is accepted, we commit to obtain a Performance Security in the amount of *[insert percentage amount]* percent of the Contract Price for the due performance of the Contract, or a Performance Securing Declaration in lieu of the allowable forms of Performance Security, subject to the terms and conditions of issued GPPB guidelines¹ for this purpose;
- h. We are not participating, as Bidders, in more than one Bid in this bidding process, other than alternative offers in accordance with the Bidding Documents;
- i. We understand that this Bid, together with your written acceptance thereof included in your notification of award, shall constitute a binding contract between us, until a formal Contract is prepared and executed; and
- j. We understand that you are not bound to accept the Lowest Calculated Bid or any other Bid that you may receive.
- k. We likewise certify/confirm that the undersigned, is the duly authorized representative of the bidder, and granted full power and authority to do, execute and perform any and all acts necessary to participate, submit the bid, and to sign and execute the ensuing contract

¹ currently based on GPPB Resolution No. 09-2020

for the [Name of Project] of the [Name of the Procuring Entity].

1. We acknowledge that failure to sign each and every page of this Bid Form, including the Bill of Quantities, shall be a ground for the rejection of our bid.

Name: _____

Legal Capacity: _____

Signature: _____

Duly authorized to sign the Bid for and behalf of: _____

Date: _____

Name of the Procuring Entity: **LGU-Tabaco City**

Contract ID No. **021-08-2022-INFRA**

Name of the Project: **Construction/Rehabilitation/ Improvement of Various Public Infrastructures (Roadways, River Control & Fence)**

Project Location: **Various Barangays, Tabaco City**

BILL OF QUANTITIES

Item No.	Description of Work to be Done	Qty	Unit	Unit Price (Php)	Total Amount (Php)
A.	ROADWAYS				
1	Rehabilitation/Improvement of Mariroc Roadways, Sitio Nagsipit, Brgy. Mariroc, Tabaco City				
1	Concrete Cutting & Demolition of Existing Damaged Concrete Pavement	1,458.00	sq.m		
2	Subgrade Preparation	1,458.00	sq.m.		
3	Aggregate Base Course	218.70	cu.m		
4	Portland Cement Concrete Pavement (t=0.23m)	1,458.00	sq.m		
5	Removal & Disposal of Excavated/ Unsuitable Materials	164.03	cu.m		
6	Traffic Management	1.00	l.s		
7	Bunkhouse (Rental Basis) and Other Facilities	1.00	l.s		
8	Occupational Construction Safety and Health	1.00	l.s		
9	Project Billboard/Signboard	1.00	unit		
	<i>Subtotal</i>				
2	Rehabilitation/Improvement of Panal Roadways, Brgy. Panal, Tabaco City				
SPL - 1	Concrete Cutting of Existing PCCP & Demolition of Obstruction	695.00	sq.m.		
105	Subgrade Preparation	695.00	sq.m.		
201	Aggregate Base Course	104.25	m ³		
311	PCCP (thk=0.23m)	695.00	sq.m.		
500	Pipe Culvert, 0.45m ø	8.00	l.m		
SPL - 2	Removal & Disposal of Excavated Mat'ls	93.83	cu.m		
SPL - 3	Traffic Management	1.00	l.s		
SPL - 4	Bunkhouse (Rental Basis) & Other Facilities	1.00	l.s		
SPL - 5	Occupational Safety & Health Program	1.00	l.s		
SPL - 6	Fab/Installation of Billboards	1.00	unit		
	<i>Subtotal</i>				
3	Rehabilitation/Improvement of San Carlos Roadways, Brgy. San Carlos, Tabaco City				
A.	Road Reblocking				
I	Concrete Cutting of Existing PCCP & Demolition of Obstruction	553.50	sq.m		
II	Embankment	101.84	cu.m		
III	Aggregate Base Course	135.79	cu.m		
IV	PCCP (230mm thk)	787.20	sq.m		
V	Removal & Disposal of Excavated/ Unsuitable Materials	110.70	cu.m		
B.	Box Culvert Drainage				
I	Demolition & Removal of Obstruction	51.60	sq.m		
II	Excavation Works	8.60	cu.m		
III	Structural Concrete	42.06	cu.m		
IV	Reinforcing Steel	4,474.75	kgs		
V	Formworks	378.40	sq.m		
VI	Manhole Cover With Inlet	15.00	unit		
VII	Restoration of Damaged Structure	154.80	sq.m		
C.	Other General Requirements				

	I	Bunkhouse (Rental Basis) and Other Facilities	1.00	l.s		
	II	Project Billboard/Signboard	1.00	unit		
	III	Occupational Construction Safety and Health	1.00	l.s		
	IV	Traffic Management	1.00	l.s		
	<i>Subtotal</i>					
4	Rehabilitation/Improvement of San Lorenzo Roadways, Brgy. San Lorenzo, Tabaco City					
	I	Demolition & Removal of Obstruction	157.20	sq.m		
	II	Embankment	108.47	cu.m		
	III	Excavation Works	26.20	cu.m		
	IV	Structural Concrete	143.03	cu.m		
	V	Reinforcing Steel	13,598.34	kgs		
	VI	Formworks	1,152.80	sq.m		
	VII	Manhole Cover With Inlet	22.00	unit		
	VIII	Restoration Of Damaged Structure	60.00	sq.m		
	IX	Bunkhouse (Rental Basis) and Other Facilities	1.00	l.s		
	X	Project Billboard/Signboard	1.00	unit		
	XI	Occupational Construction Safety and Health	1.00	l.s		
	XII	Traffic Management	1.00	l.s		
	<i>Subtotal</i>					
5	Rehabilitation/Improvement of Quinastillojan Roadways, Brgy. Quinastillojan, Tabaco City					
	A.	Slope Protection				
	I	Clearing & Grubbing	316.50	sq.m		
	II	Structural Excavation	139.26	cu.m		
	III	Handlaid Rock Embankment	190.90	cu.m		
	IV	Grouted Riprap	151.92	sq.m		
	V	Reinforcing Steel Bars	5,109.23	sq.m		
	VI	Structural Concrete	93.90	sq.m		
	VII	Formworks	422.00	sq.m		
	B.	Roadway				
	I	Concrete Cutting of Existing Pavement	65.00	sq.m		
	II	Aggregate Base Course	9.75	sq.m		
	III	PCCP (thk= 230mm)	65.00	sq.m		
	IV	Removal & Disposal Of Unsuitable Materials	13.00	cu.m		
	C.	Other General Requirements				
	I	Bunkhouse (Rental Basis) and Other Facilities	1.00	l.s		
	II	Project Billboard/Signboard	1.00	unit		
	III	Occupational Construction Safety and Health	1.00	l.s		
	IV	Traffic Management	1.00	l.s		
	<i>Subtotal</i>					
6	Rehabilitation/Improvement of Buhian Roadways, Brgy. Buhian, Tabaco City					
	I	Clearing & Grubbing	420.00	sq.m		
	II	Demolition & Removal of Obstruction	210.00	sq.m		
	III	Structural Excavation	151.20	cu.m		
	IV	Embankment From Structure Excavation	50.40	cu.m		
	V	RCPC, 0.90m Ø	210.00	L.m		
	VI	Subgrade Preparation	462.00	sq.m		
	VII	Aggregate Base Course	79.70	cu.m		
	VIII	PCCP, 230mm Thk	462.00	sq.m		
	IX	Manhole Cover with Inlet	36.00	unit		
	X	Removal & Disposal of Excavated/ Unsuitable Materials	132.30	cu.m		

	XI	Bunkhouse (Rental Basis) and Other Facilities	1.00	l.s		
	XII	Project Billboard/Signboard	1.00	unit		
	XIII	Occupational Construction Safety and Health	1.00	l.s		
	XIV	Traffic Management	1.00	l.s		
	<i>Subtotal</i>					
7	Rehabilitation/Improvement of Fatima Roadways, Brgy. Fatima, Tabaco City					
	A.	Single Barrel Box Culvert				
	I	Demolition & Removal of Obstruction	67.50	sq.m		
	II	Structural Excavation	19.17	cu.m		
	III	Boulder Embankment	4.50	cu.m		
	IV	Structural Concrete	30.53	cu.m		
	V	Reinforcing Steel	7,576.63	kgs		
	VI	Formworks	117.06	sq.m		
	VII	Guardrails	9.00	l.m		
	VIII	Removal & Disposal of Excavated/Unsuitable Materials	32.67	cu.m		
	B.	PCCP (230mm)				
	I	Concrete Cutting of Existing Pavement	112.50	sq.m		
	II	Demolition of Obstruction	225.00	cu.m		
	III	Aggregate Base Course	34.93	cu.m		
	IV	PCCP (230mm Thk)	225.00	sq.m		
	V	Restoration of Damaged Structure	54.00	sq.m		
	VI	Removal & Disposal of Unsuitable Materials	22.50	cu.m		
	C.	Slope Protection				
	I	Structural Excavation	42.24	cu.m		
	II	Grouted Riprap	79.20	cu.m		
	III	Structural Concrete	90.20	cu.m		
	IV	Reinforcing Steel	4,866.15	cu.m		
	V	Formworks	87.00	sq.m		
	VI	Removal & Disposal of Excavated/Unsuitable Materials	42.24	cu.m		
	D.	Other General Requirements				
	I	Bunkhouse (Rental Basis) and Other Facilities	1.00	l.s		
	II	Project Billboard/Signboard	1.00	unit		
	III	Occupational Construction Safety and Health	1.00	l.s		
	IV	Traffic Management	1.00	l.s		
	<i>Subtotal</i>					
8	Rehabilitation/Improvement of Oson-Magapo Roadways, Brgy. Oson, Tabaco City					
	1	Clearing & Grubbing	862.00	sq.m		
	2	Surplus Common Excavation	188.56	cu.m		
	3	Structure Excavation	3.50	cu.m		
	4	Embankment (from Excavation)	188.56	cu.m		
	5	Rubble Concrete	2.40	cu.m		
	6	Grouted Riprap	3.00	cu.m		
	7	Subgrade Preparation	862.00	sq.m.		
	8	Aggregate Base Course	129.30	cu.m		
	9	Portland Cement Concrete Pavement (t=0.15m)	862.00	sq.m		
	10	Bunkhouse (Rental Basis) and Other Facilities	1.00	l.s		
	11	Occupational Construction Safety and Health	1.00	l.s		
	12	Project Billboard/Signboard	1.00	unit		
	<i>Subtotal</i>					
9	Rehabilitation/Improvement of Sto. Cristo Roadways, Brgy. Sto. Cristo , Tabaco City					

	A.	Concrete Cutting of Existing PCCP & Demolition of Obstruction	149.17	sqm		
	B.	Excavation	77.58	cu.m.		
	C.	Backfill	43.71	cu.m.		
	D.	Removal and Disposal of Unsuitable/Excavated Materials	56.24	cum.		
	E.	RCPC (0.60m Ø)	23.00	ln.m		
	F.	Manhole W/ Cover & Inlet	3.00	unit		
	G.	Restoration Works	19.27	sqm		
	H.	Subgrade Preparation	176.70	sqm		
	I.	Aggregate Base Course	25.20	cum		
	J.	Portland Cement Concrete Pavement (0.15m Thk)	188.40	sqm		
	K.	Reinforcing Steel	944.04	kgs		
	L.	Structural Concrete	13.77	cum		
	M.	Traffic Management	1.00	l.s		
	N.	Bunkhouse and Other Facilities	1.00	l.s		
	O.	Occupational Safety and Health Program	1.00	l.s		
	P.	Fab/Installation of Billboards	1.00	unit		
					<i>Subtotal</i>	
10	Rehabilitation/Improvement of Basud Roadways, Brgy. Basud, Tabaco City					
	Item I	Repair/Rehabilitation of Damaged Pavement with Drainage System				
	A.	Removal and Disposal of Unsuitable (0.15mm thk PCCP)	40.05	cum		
	B.	Subgrade Preparation	445.00	sqm		
	C.	Aggregate Base Course	66.75	cum		
	D.	Portland Cement Concrete Pavement	102.35	cum		
	E.	Excavation	64.49	cu.m.		
	F.	Backfill	35.21	cu.m.		
	G.	Removal and Disposal of Unsuitable/Excavated Materials	29.28	cu.m.		
	H.	Manhole with Cover	10.00	units		
	I.	RCPC (0.61 m Ø)	31.00	l.m		
	Item II	Improvement of River Dike with View Deck				
	A.	Clearing Works	34.40	sqm		
	B.	Structural Excavation	14.76	cum.		
	C.	Structural Concrete	16.42	cum.		
	D.	Reinforcing Steel	1,407.16	kgs		
	E.	Handlaid Rock Embankment	27.52	cum.		
	F.	Grouted Riprap	16.13	cum		
	G.	Masonry Works	25.24	sq.m.		
	H.	Painting Works	25.24	sq.m.		
	Item III	Traffic Management	1.00	l.s		
	Item IV	Bunkhouse and Other Facilities	1.00	l.s		
	Item V	Occupational Safety and Health Program	1.00	l.s		
	Item VI	Fab/Installation of Billboards	1.00	unit		
					<i>Subtotal</i>	
B.	RIVER CONTROL					
11	Rehabilitation/Improvement of Guinobat River Control, Brgy. Guinobat, Tabaco City					
	I	Demolition of Existing Structure	450.00	sq.m		
	II	Structural Excavation	77.42	cu.m		
	III	Grouted Riprap	179.46	cu.m		
	IV	Reinforcing Steel	7,233.76	kgs		
	V	Structural Concrete	115.15	cu.m		
	VI	Formworks	630.00	sq.m		
	VII	Removal & Disposal of Excavated/ Unsuitable Materials	77.42	cu.m		

	VIII	Bunkhouse (Rental Basis) and Other Facilities	1.00	l.s		
	IX	Project Billboard/Signboard	1.00	unit		
	X	Occupational Construction Safety and Health	1.00	l.s		
	XI	Traffic Management	1.00	l.s		
	<i>Subtotal</i>					
12	Rehabilitation/Improvement of Bonot River Control, Brgy. Bonot, Tabaco City					
	I	Clearing and Grubbing	384.00	sq.m		
	II	Structural Excavation	76.80	cu.m		
	III	Grouted Riprap	147.20	cu.m		
	IV	Reinforcing Steel	7,530.30	kgs		
	V	Structural Concrete	119.04	cu.m		
	VI	Formworks	537.60	sq.m		
	VII	Removal & Disposal of Excavated/ Unsuitable Materials	76.80	cu.m		
	VIII	RCPC, 0.60m Ø	7.00	L.m		
	IX	Bunkhouse (Rental Basis) and Other Facilities	1.00	l.s		
	X	Project Billboard/Signboard	1.00	unit		
	XI	Occupational Construction Safety and Health	1.00	l.s		
	<i>Subtotal</i>					
C.	FENCE					
13	Construction of Perimeter Fence (Slope Protection), Karangahan Wellness & Cultural District, Karangahan Blvd, Tabaco City					
	1	Survey Works	1.00	lot		
	2	Clearing & Grubbing	216.00	m ²		
	3	Structure Excavation	155.52	cu.m		
	4	Embankment (from structure excavation)	139.97	cu.m		
	5	Rubble Concrete Foundation	129.60	cu.m.		
	6	Stone Masonry	216.00	cu.m		
	SPL-1	Bunkhouse (Rental Basis) and Other Facilities	1.00	l.s		
	SPL-2	Occupational Construction Safety and Health	1.00	l.s		
	SPL-3	Project Billboard/Signboard	1.00	unit		
	<i>Subtotal</i>					
14	Rehabilitation/Improvement of Fence, New Government Center, Brgy. Pawa, Tabaco City					
	Part A	Earthworks				
	800(1)	Clearing & Grubbing	283.50	sq.m.		
	801(3)	Removal of Structures and Obstruction	54.00	sq.m.		
	803(1)a	Structure Excavation (Common Soil)	102.92	cu.m.		
	804(1)a	Embankment (From Structure Excavation)	71.18	cu.m.		
	804(4)	Gravel Fill	13.55	cu.m.		
	Part B	Plain And Reinforced Concrete Works				
	900	Structural Concrete	38.94	cu.m.		
	902(1)a	Reinforcing Steel (Deformed, Grade 40)	3,274.62	kgs		
	903(2)	Formworks and False Works	156.80	sq.m.		
	Part C	Finishing And Other Civil Works				
	1027(1)	Cement Plaster Finish	831.60	sq.m.		
	1046	CHB Non Load Bearing, 5" thk (Incl. RSB)	415.80	sq.m.		
	Part D	Other General Requirements				
	SPL-1	Provision of Bunkhouse (Rental Basis) & Other Facilities	1.00	l.s.		

	B.5	Project & Community Billboard/Signboard	1.00	unit		
	B.7(2)	Occupational Safety and Health Program	1.00	l.s.		
	<i>Subtotal</i>					
15	Construction of Perimeter Fence, Central MRF, Brgy. San Vicente, Tabaco City					
	Part A	Earthworks				
	800(1)	Clearing & Grubbing	278.25	sq.m.		
	803(1)a	Structure Excavation (Common Soil)	100.50	cu.m.		
	804(1)a	Embankment (From Structure Excavation)	69.51	cu.m.		
	804(4)	Gravel Fill	13.24	cu.m.		
	Part B	Plain And Reinforced Concrete Works				
	900	Structural Concrete	37.96	cu.m.		
	902(1)a	Reinforcing Steel (Deformed, Grade 40)	3,180.13	kgs		
	903(2)	Formworks and False Works	151.90	sq.m.		
	Part C	Finishing And Other Civil Works				
	1027(1)	Cement Plaster Finish	816.20	sq.m.		
	1046	CHB Non Load Bearing, 5" thk (Incl. RSB)	408.10	sq.m.		
	SPL-1	Installation of Barbed Wire	185.50	l.m		
	Part D	Other General Requirements				
	SPL-1	Provision of Bunkhouse (Rental Basis) & Other Facilities	1.00	l.s.		
	B.5	Project & Community Billboard/Signboard	1.00	unit		
	B.7(2)	Occupational Safety and Health Program	1.00	l.s.		
	<i>Subtotal</i>					
	TOTAL					

Name of the Company/Bidder	Name of Authorized Representative	Signature of Authorized Representative

Name of the Procuring Entity: *LGU-Tabaco City*

Contract ID No. *021-08-2022-INFRA*

Name of the Project: *Construction/Rehabilitation/ Improvement of Various Public Infrastructures (Roadways, River Control & Fence)*

Project Location: *Various Barangays, Tabaco City*

Contract Name : _____

Location : _____

CASH FLOW BY QUARTER AND PAYMENT SCHEDULE

PARTICULAR	% WT.	1ST QUARTER	2ND QUARTER	3RD QUARTER	4TH QUARTER
ACCOMPLISHMENT					
CASH FLOW					
CUMULATIVE ACCOMPLISHMENT					
CUMULATIVE CASH FLOW					

Submitted by:

Name of the Representative of the Bidder : _____

Name of the Bidder: _____

Position : _____

Date _____

Contract Agreement Form for the Procurement of Infrastructure Projects (Revised)

[not required to be submitted with the Bid, but it shall be submitted within ten (10) days after receiving the Notice of Award]

CONTRACT AGREEMENT

THIS AGREEMENT, made this *[insert date]* day of *[insert month]*, *[insert year]* between *[name and address of PROCURING ENTITY]* (hereinafter called the “Entity”) and *[name and address of Contractor]* (hereinafter called the “Contractor”).

WHEREAS, the Entity is desirous that the Contractor execute *[name and identification number of contract]* (hereinafter called “the Works”) and the Entity has accepted the Bid for *[contract price in words and figures in specified currency]* by the Contractor for the execution and completion of such Works and the remedying of any defects therein.

NOW THIS AGREEMENT WITNESSETH AS FOLLOWS:

1. In this Agreement, words and expressions shall have the same meanings as are respectively assigned to them in the Conditions of Contract hereinafter referred to.
2. The following documents as required by the 2016 revised Implementing Rules and Regulations of Republic Act No. 9184 shall be deemed to form and be read and construed as part of this Agreement, *viz.*:

- a. Philippine Bidding Documents (PBDs);
 - i. Drawings/Plans;
 - ii. Specifications;
 - iii. Bill of Quantities;
 - iv. General and Special Conditions of Contract;
 - v. Supplemental or Bid Bulletins, if any;
- b. Winning bidder’s bid, including the Eligibility requirements, Technical and Financial Proposals, and all other documents or statements submitted;

Bid form, including all the documents/statements contained in the Bidder’s bidding envelopes, as annexes, and all other documents submitted (*e.g.*, Bidder’s response to request for clarifications on the bid), including corrections to the bid, if any, resulting from the Procuring Entity’s bid evaluation;

- c. Performance Security;
 - d. Notice of Award of Contract and the Bidder’s conforme thereto; and
 - e. Other contract documents that may be required by existing laws and/or the Procuring Entity concerned in the PBDs. **Winning bidder agrees that additional contract documents or information prescribed by the GPPB that are subsequently required for submission after the contract execution, such as the Notice to Proceed, Variation Orders, and Warranty Security, shall likewise form part of the Contract.**
3. In consideration for the sum of *[total contract price in words and figures]* or such other sums as may be ascertained, *[Named of the bidder]* agrees to *[state the object of the contract]* in accordance with his/her/its Bid.

4. The *[Name of the procuring entity]* agrees to pay the above-mentioned sum in accordance with the terms of the Bidding.

IN WITNESS whereof the parties thereto have caused this Agreement to be executed the day and year first before written.

[Insert Name and Signature]

[Insert Name and Signature]

[Insert Signatory's Legal Capacity]

[Insert Signatory's Legal Capacity]

for:

for:

[Insert Procuring Entity]

[Insert Name of Supplier]

Acknowledgment

[Format shall be based on the latest Rules on Notarial Practice]

Performance Securing Declaration (Revised)

[if used as an alternative performance security but it is not required to be submitted with the Bid, as it shall be submitted within ten (10) days after receiving the Notice of Award]

REPUBLIC OF THE PHILIPPINES)
CITY OF _____) S.S.

PERFORMANCE SECURING DECLARATION

Invitation to Bid: [Insert Reference Number indicated in the Bidding Documents]

To: [Insert name and address of the Procuring Entity]

I/We, the undersigned, declare that:

1. I/We understand that, according to your conditions, to guarantee the faithful performance by the supplier/distributor/manufacturer/contractor/consultant of its obligations under the Contract, I/we shall submit a Performance Securing Declaration within a maximum period of ten (10) calendar days from the receipt of the Notice of Award prior to the signing of the Contract.
2. I/We accept that: I/we will be automatically disqualified from bidding for any procurement contract with any procuring entity for a period of one (1) year for the first offense, or two (2) years **for the second offense**, upon receipt of your Blacklisting Order if I/We have violated my/our obligations under the Contract;
3. I/We understand that this Performance Securing Declaration shall cease to be valid upon:
 - a. issuance by the Procuring Entity of the Certificate of Final Acceptance, subject to the following conditions:
 - i. Procuring Entity has no claims filed against the contract awardee;
 - ii. It has no claims for labor and materials filed against the contractor; and
 - iii. Other terms of the contract; or
 - b. replacement by the winning bidder of the submitted PSD with a performance security in any of the prescribed forms under Section 39.2 of the 2016 revised IRR of RA No. 9184 as required by the end-user.

IN WITNESS WHEREOF, I/We have hereunto set my/our hand/s this ____ day of [month] [year] at [place of execution].

*[Insert NAME OF BIDDER OR ITS
AUTHORIZED REPRESENTATIVE]*

[Insert signatory's legal capacity]

Affiant

[Jurat]

[Format shall be based on the latest Rules on Notarial Practice]

NAME OF THE CONTRACTOR
ADDRESS OF THE CONTRACTOR

ATTY. JOVITO BRON CODERIS, JR.
BAC CHAIRMAN
LGU-TABACO CITY

ORIGINAL - TECHNICAL COMPONENT

**CONSTRUCTION/REHABILITATION/IMPROVEMENT OF
VARIOUS PUBLIC INFRASTRUCTURES (ROADWAYS, RIVER
CONTROL & FENCE), VARIOUS BARANGAYS, TABACO CITY
CONTRACT ID NO. 021-08-2022-INFRA**

DO NOT OPEN BEFORE SEPTEMBER 12, 2022, 9:30AM

NAME OF THE CONTRACTOR
ADDRESS OF THE CONTRACTOR

ATTY. JOVITO BRON CODERIS, JR.
BAC CHAIRMAN
LGU-TABACO CITY

ORIGINAL – FINANCIAL COMPONENT

**CONSTRUCTION/REHABILITATION/IMPROVEMENT OF
VARIOUS PUBLIC INFRASTRUCTURES (ROADWAYS, RIVER
CONTROL & FENCE), VARIOUS BARANGAYS, TABACO CITY
CONTRACT ID NO. 021-08-2022-INFRA**

DO NOT OPEN BEFORE SEPTEMBER 12, 2022, 9:30AM

NAME OF THE CONTRACTOR
ADDRESS OF THE CONTRACTOR

ATTY. JOVITO BRON CODERIS, JR.
BAC CHAIRMAN
LGU-TABACO CITY

ORIGINAL BID

**CONSTRUCTION/REHABILITATION/IMPROVEMENT OF
VARIOUS PUBLIC INFRASTRUCTURES (ROADWAYS, RIVER
CONTROL & FENCE), VARIOUS BARANGAYS, TABACO CITY
CONTRACT ID NO. 021-08-2022-INFRA**

DO NOT OPEN BEFORE SEPTEMBER 12, 2022, 9:30AM

NAME OF THE CONTRACTOR
ADDRESS OF THE CONTRACTOR

ATTY. JOVITO BRON CODERIS, JR.
BAC CHAIRMAN
LGU-TABACO CITY

COPY NO. 1 - TECHNICAL COMPONENT

**CONSTRUCTION/REHABILITATION/IMPROVEMENT OF
VARIOUS PUBLIC INFRASTRUCTURES (ROADWAYS, RIVER
CONTROL & FENCE), VARIOUS BARANGAYS, TABACO CITY
CONTRACT ID NO. 021-08-2022-INFRA**

DO NOT OPEN BEFORE SEPTEMBER 12, 2022, 9:30AM

NAME OF THE CONTRACTOR
ADDRESS OF THE CONTRACTOR

ATTY. JOVITO BRON CODERIS, JR.
BAC CHAIRMAN
LGU-TABACO CITY

COPY NO. 1 – FINANCIAL COMPONENT

**CONSTRUCTION/REHABILITATION/IMPROVEMENT OF
VARIOUS PUBLIC INFRASTRUCTURES (ROADWAYS, RIVER
CONTROL & FENCE), VARIOUS BARANGAYS, TABACO CITY
CONTRACT ID NO. 021-08-2022-INFRA**

DO NOT OPEN BEFORE SEPTEMBER 12, 2022, 9:30AM

NAME OF THE CONTRACTOR
ADDRESS OF THE CONTRACTOR

ATTY. JOVITO BRON CODERIS, JR.
BAC CHAIRMAN
LGU-TABACO CITY

COPY NO. 1

**CONSTRUCTION/REHABILITATION/IMPROVEMENT OF
VARIOUS PUBLIC INFRASTRUCTURES (ROADWAYS, RIVER
CONTROL & FENCE), VARIOUS BARANGAYS, TABACO CITY
CONTRACT ID NO. 021-08-2022-INFRA**

DO NOT OPEN BEFORE SEPTEMBER 12, 2022, 9:30AM

NAME OF THE CONTRACTOR
ADDRESS OF THE CONTRACTOR

ATTY. JOVITO BRON CODERIS, JR.
BAC CHAIRMAN
LGU-TABACO CITY

COPY NO. 2 - TECHNICAL COMPONENT

**CONSTRUCTION/REHABILITATION/IMPROVEMENT OF
VARIOUS PUBLIC INFRASTRUCTURES (ROADWAYS, RIVER
CONTROL & FENCE), VARIOUS BARANGAYS, TABACO CITY
CONTRACT ID NO. 021-08-2022-INFRA**

DO NOT OPEN BEFORE SEPTEMBER 12, 2022, 9:30AM

NAME OF THE CONTRACTOR
ADDRESS OF THE CONTRACTOR

ATTY. JOVITO BRON CODERIS, JR.
BAC CHAIRMAN
LGU-TABACO CITY

COPY NO. 2 – FINANCIAL COMPONENT

**CONSTRUCTION/REHABILITATION/IMPROVEMENT OF
VARIOUS PUBLIC INFRASTRUCTURES (ROADWAYS, RIVER
CONTROL & FENCE), VARIOUS BARANGAYS, TABACO CITY
CONTRACT ID NO. 021-08-2022-INFRA**

DO NOT OPEN BEFORE SEPTEMBER 12, 2022, 9:30AM

NAME OF THE CONTRACTOR
ADDRESS OF THE CONTRACTOR

ATTY. JOVITO BRON CODERIS, JR.
BAC CHAIRMAN
LGU-TABACO CITY

COPY NO. 2

**CONSTRUCTION/REHABILITATION/IMPROVEMENT OF
VARIOUS PUBLIC INFRASTRUCTURES (ROADWAYS, RIVER
CONTROL & FENCE), VARIOUS BARANGAYS, TABACO CITY
CONTRACT ID NO. 021-08-2022-INFRA**

DO NOT OPEN BEFORE SEPTEMBER 12, 2022, 9:30AM

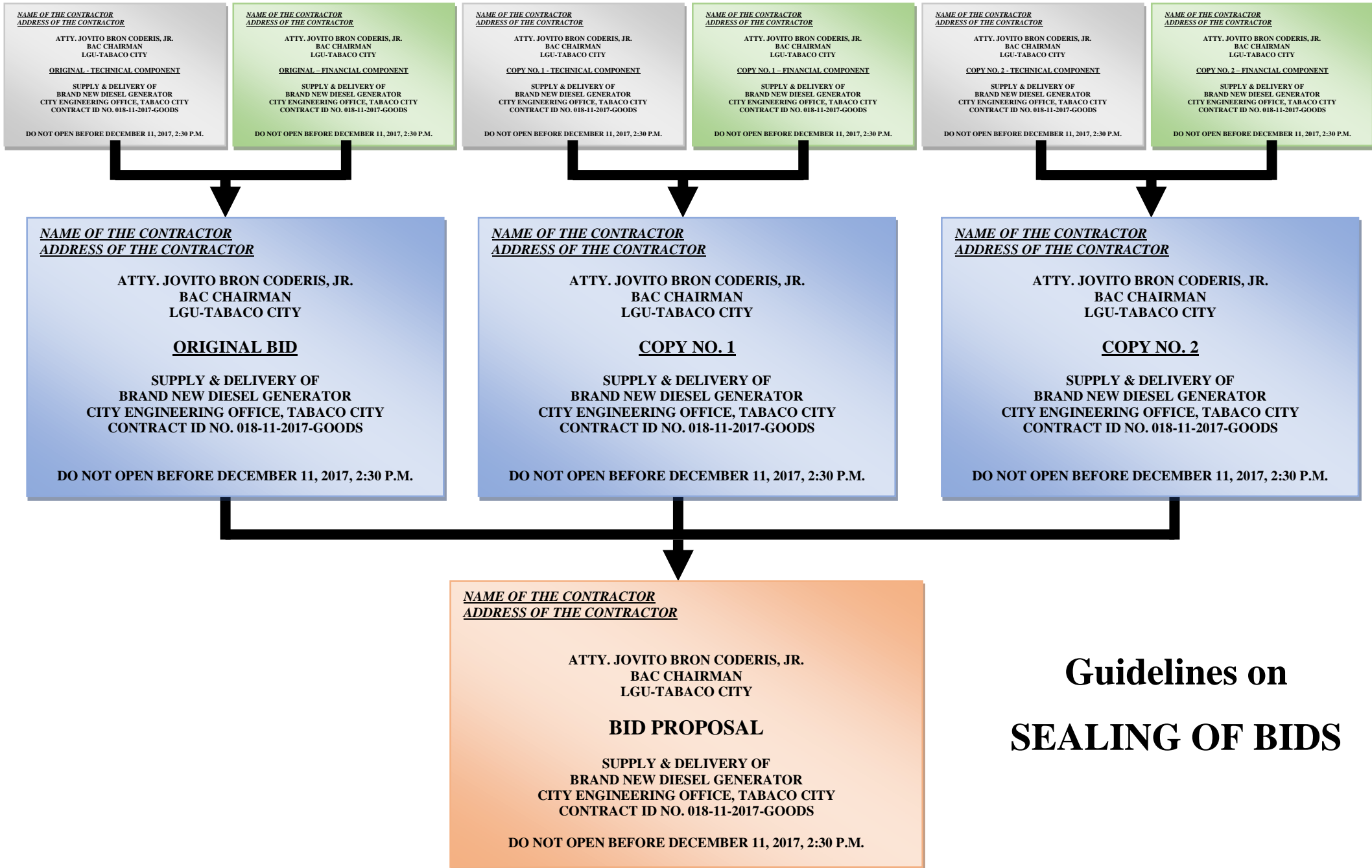
NAME OF THE CONTRACTOR
ADDRESS OF THE CONTRACTOR

ATTY. JOVITO BRON CODERIS, JR.
BAC CHAIRMAN
LGU-TABACO CITY

BID PROPOSAL

**CONSTRUCTION/REHABILITATION/IMPROVEMENT OF
VARIOUS PUBLIC INFRASTRUCTURES (ROADWAYS, RIVER
CONTROL & FENCE), VARIOUS BARANGAYS, TABACO CITY
CONTRACT ID NO. 021-08-2022-INFRA**

DO NOT OPEN BEFORE SEPTEMBER 12, 2022, 9:30AM



Guidelines on SEALING OF BIDS

