

# **PHILIPPINE BIDDING DOCUMENTS**

(As Harmonized with Development Partners)

Government of the Republic of the Philippines

Province of Albay

**CITY OF TABACO**

---

## **Procurement of Infrastructure Projects**

---

**CONSTRUCTION/IMPROVEMENT/REHABILITATION OF VARIOUS PUBLIC INFRASTRUCTURE PROJECTS (BUILDINGS, WATER SYSTEM AND OTHER INFRASTRUCTURE PROJECTS) VARIOUS BARANGAYS, TABACO CITY**

---

**Contract ID No. 025-07-2023-INFRA**

---

**July 17, 2023**

**Sixth Edition  
July 2020**

# TABLE OF CONTENTS

<b>Glossary of Terms, Abbreviations, and Acronyms.....</b>	<b>4</b>
<b>Section I. Invitation to Bid .....</b>	<b>6</b>
<b>Section II. Instructions to Bidders.....</b>	<b>9</b>
1. Scope of Bid.....	10
2. Funding Information .....	10
3. Bidding Requirements.....	10
4. Corrupt, Fraudulent, Collusive, Coercive, and Obstructive Practices .....	10
5. Eligible Bidders.....	10
6. Origin of Associated Goods .....	11
7. Subcontracts .....	11
8. Pre-Bid Conference.....	11
9. Clarification and Amendment of Bidding Documents.....	11
10. Documents Comprising the Bid: Eligibility and Technical Components...	11
11. Documents Comprising the Bid: Financial Component .....	12
12. Alternative Bids .....	12
13. Bid Prices .....	12
14. Bid and Payment Currencies.....	12
15. Bid Security.....	13
16. Sealing and Marking of Bids.....	13
17. Deadline for Submission of Bids .....	13
18. Opening and Preliminary Examination of Bids .....	13
19. Detailed Evaluation and Comparison of Bids.....	13
20. Post Qualification.....	14
21. Signing of the Contract .....	14
<b>Section III. Bid Data Sheet.....</b>	<b>15</b>
<b>Section IV. General Conditions of Contract .....</b>	<b>18</b>
1. Scope of Contract.....	19
2. Sectional Completion of Works.....	19
3. Possession of Site.....	19
4. The Contractor's Obligations.....	19
5. Performance Security .....	19
6. Site Investigation Reports .....	20
7. Warranty.....	20
8. Liability of the Contractor.....	20
9. Termination for Other Causes.....	20
10. Dayworks .....	20
11. Program of Work.....	20

12. Instructions, Inspections and Audits .....	21
13. Advance Payment.....	21
14. Progress Payments .....	21
15. Operating and Maintenance Manuals.....	21
<b>Section V. Special Conditions of Contract.....</b>	<b>22</b>
<b>Section VI. Specifications .....</b>	<b>24</b>
<b>Section VII. Drawings.....</b>	<b>70</b>
<b>Section VIII. Bill of Quantities .....</b>	<b>72</b>
<b>Section IX. Checklist of Technical and Financial Documents.....</b>	<b>812</b>
<b>Annex A. Forms and Templates .....</b>	<b>85</b>

# *Glossary of Terms, Abbreviations, and Acronyms*

**ABC** – Approved Budget for the Contract.

**ARCC** – Allowable Range of Contract Cost.

**BAC** – Bids and Awards Committee.

**Bid** – A signed offer or proposal to undertake a contract submitted by a bidder in response to and in consonance with the requirements of the bidding documents. Also referred to as *Proposal* and *Tender*. (2016 revised IRR, Section 5[c])

**Bidder** – Refers to a contractor, manufacturer, supplier, distributor and/or consultant who submits a bid in response to the requirements of the Bidding Documents. (2016 revised IRR, Section 5[d])

**Bidding Documents** – The documents issued by the Procuring Entity as the bases for bids, furnishing all information necessary for a prospective bidder to prepare a bid for the Goods, Infrastructure Projects, and/or Consulting Services required by the Procuring Entity. (2016 revised IRR, Section 5[e])

**BIR** – Bureau of Internal Revenue.

**BSP** – Bangko Sentral ng Pilipinas.

**CDA** – Cooperative Development Authority.

**Consulting Services** – Refer to services for Infrastructure Projects and other types of projects or activities of the GOP requiring adequate external technical and professional expertise that are beyond the capability and/or capacity of the GOP to undertake such as, but not limited to: (i) advisory and review services; (ii) pre-investment or feasibility studies; (iii) design; (iv) construction supervision; (v) management and related services; and (vi) other technical services or special studies. (2016 revised IRR, Section 5[i])

**Contract** – Refers to the agreement entered into between the Procuring Entity and the Supplier or Manufacturer or Distributor or Service Provider for procurement of Goods and Services; Contractor for Procurement of Infrastructure Projects; or Consultant or Consulting Firm for Procurement of Consulting Services; as the case may be, as recorded in the Contract Form signed by the parties, including all attachments and appendices thereto and all documents incorporated by reference therein.

**Contractor** – is a natural or juridical entity whose proposal was accepted by the Procuring Entity and to whom the Contract to execute the Work was awarded. Contractor as used in these Bidding Documents may likewise refer to a supplier, distributor, manufacturer, or consultant.

**CPI** – Consumer Price Index.

**DOLE** – Department of Labor and Employment.

**DTI** – Department of Trade and Industry.

**Foreign-funded Procurement or Foreign-Assisted Project** –Refers to procurement whose funding source is from a foreign government, foreign or international financing institution as specified in the Treaty or International or Executive Agreement. (2016 revised IRR, Section 5[b]).

**GFI** – Government Financial Institution.

**GOCC** –Government-owned and/or –controlled corporation.

**Goods** – Refer to all items, supplies, materials and general support services, except Consulting Services and Infrastructure Projects, which may be needed in the transaction of public businesses or in the pursuit of any government undertaking, project or activity, whether in the nature of equipment, furniture, stationery, materials for construction, or personal property of any kind, including non-personal or contractual services such as the repair and maintenance of equipment and furniture, as well as trucking, hauling, janitorial, security, and related or analogous services, as well as procurement of materials and supplies provided by the Procuring Entity for such services. The term “related” or “analogous services” shall include, but is not limited to, lease or purchase of office space, media advertisements, health maintenance services, and other services essential to the operation of the Procuring Entity. (2016 revised IRR, Section 5[r])

**GOP** – Government of the Philippines.

**Infrastructure Projects** – Include the construction, improvement, rehabilitation, demolition, repair, restoration or maintenance of roads and bridges, railways, airports, seaports, communication facilities, civil works components of information technology projects, irrigation, flood control and drainage, water supply, sanitation, sewerage and solid waste management systems, shore protection, energy/power and electrification facilities, national buildings, school buildings, hospital buildings, and other related construction projects of the government. Also referred to as *civil works or works*. (2016 revised IRR, Section 5[u])

**LGUs** – Local Government Units.

**NFCC** – Net Financial Contracting Capacity.

**NGA** – National Government Agency.

**PCAB** – Philippine Contractors Accreditation Board.

**PhilGEPS** - Philippine Government Electronic Procurement System.

**Procurement Project** – refers to a specific or identified procurement covering goods, infrastructure project or consulting services. A Procurement Project shall be described, detailed, and scheduled in the Project Procurement Management Plan prepared by the agency which shall be consolidated in the procuring entity's Annual Procurement Plan. (GPPB Circular No. 06-2019 dated 17 July 2019)

**PSA** – Philippine Statistics Authority.

**SEC** – Securities and Exchange Commission.

**SLCC** – Single Largest Completed Contract.

**UN** – United Nations.

***Section I. Invitation to Bid***



Republic of the Philippines  
Province of Albay  
**CITY GOVERNMENT OF TABACO**  
Tabaco City

**Bids and Awards Committee**

**Invitation to Bid for  
Construction/Improvement/Rehabilitation of Various Public Infrastructure Projects  
(Buildings, Water System and Other Infrastructure Projects)  
Various Barangays, Tabaco City  
Contract ID No. 025-07-2023-INFRA**

1. The *City Government of Tabaco*, through the *20% CDF 2023, 20% CDF 2017 (Supp. Budget No. 2), GAD Fund 2023, SEF 2023, LDRRMF 2023 and General Fund 2023*, intends to apply the sum of *Forty-Nine Million Nine Hundred Thousand Six Hundred Thirty-Seven Pesos and Ninety-One Centavos (Php 49,900,637.91)* being the Approved Budget for the Contract (ABC) to payments under the contract for the *Construction/Improvement/Rehabilitation of Various Public Infrastructure Projects (Buildings, Water System and Other Infrastructure Projects), Various Barangays, Tabaco City under Contract ID No. 025-07-2023-INFRA*. Bids received in excess of the ABC shall be automatically rejected at bid opening.
2. The *City Government of Tabaco* now invites bids for the above Procurement Project. Completion of the Works is required *within 240 calendar days from receipt of Notice to Proceed*. Bidders should have completed a contract similar to the Project. The description of an eligible bidder is contained in the Bidding Documents, particularly, in Section II (Instructions to Bidders).
3. Bidding will be conducted through open competitive bidding procedures using non-discretionary “*pass/fail*” criterion as specified in the 2016 revised Implementing Rules and Regulations (IRR) of Republic Act (RA) No. 9184.
4. Interested bidders may obtain further information from the *City Government of Tabaco* and inspect the Bidding Documents at the address given below from *9:00 A.M. to 4:00 P.M.*
5. A complete set of Bidding Documents may be acquired by interested bidders on *July 17-August 07, 2023* from given address and website/s below *and upon payment of the applicable fee for the Bidding Documents*, pursuant to the latest Guidelines issued by the GPPB, in the amount of *Twenty-Five Thousand Pesos (P25,000.00)*. The Procuring Entity shall allow the bidder to present its proof of payment for the fees in person.
6. The *City Government of Tabaco* will hold a Pre-Bid Conference on *July 25, 2023, 9:30AM, BAC Conference Room, 2F Annex Bldg., Tabaco City Hall, Tabaco City*, which shall be open to prospective bidders.
7. Bids must be duly received by the BAC Secretariat through manual submission at the office address as indicated below on or before *9:00AM, August 07, 2023*. Late bids shall not be accepted.
8. All bids must be accompanied by a bid security in any of the acceptable forms and in the amount stated in **ITB** Clause 16.

9. Bid opening shall be on **August 07, 2023, 9:30AM** at the given address below. Bids will be opened in the presence of the bidders' representatives who choose to attend the activity.

10. **Other Necessary Information:**

**Minimum PCAB License Category:** General Building

**Project Size Range:** Building – Medium A

**Minimum Manpower Requirements:**

- |  |   |
|--|---|
| <ul style="list-style-type: none"><li>• 1 Project Manager</li><li>• 1 Project Engineer</li><li>• 1 Materials Engineer I</li><li>• 7 Construction Foreman</li></ul> | <ul style="list-style-type: none"><li>• 5 Safety Officer</li><li>• 7 First Aider</li><li>• 27 Skilled Laborer</li><li>• 50 Common Laborer</li></ul> |
|--|---|

**Minimum Equipment Required:**

- |   |  |
|---|--|
| <ul style="list-style-type: none"><li>• 6 units One Bagger Concrete Mixer</li><li>• 2 units Water Truck</li><li>• 2 units Concrete Saw/Cutter</li><li>• 5 units Bar Cutter / Bender</li><li>• 1 unit Backhoe, Wheel type</li><li>• 4 units Concrete Vibrator, 5HP Gasoline drive unit with 2" shaft</li><li>• 1 unit Backhoe, 0.80cu.m, Crawler Type</li><li>• 4 units Welding Machine with Gen Set, 300amp</li><li>• 3 units Stake Truck, 6-8M/ 195Hp</li><li>• 1 unit Self Loading Tuck</li></ul> | <ul style="list-style-type: none"><li>• 1 unit Road Grader</li><li>• 1 unit Road Roller, Vibratory</li><li>• 1 units Fusion Machine, 800W</li><li>• 1 unit Drilling Rig</li><li>• 1 unit Surge &amp; Bailer Equipment</li><li>• 1 unit High Pressure Velocity Water Pump, with engine</li><li>• 2 units Air Compressor, complete accessories</li><li>• 2 units Submersible Pump, complete accessories</li><li>• Enough Handtools</li></ul> |
|---|--|

11. The **City Government of Tabaco** reserves the right to reject any and all bids, declare a failure of bidding, or not award the contract at any time prior to contract award in accordance with Sections 35.6 and 41 of the 2016 revised Implementing Rules and Regulations (IRR) of RA No. 9184, without thereby incurring any liability to the affected bidder or bidders.

12. For further information, please refer to:

**Atty. Jovito Bron Coderis, Jr.**  
BAC Chairman / City Legal Office  
BAC Office / City Legal Office  
2F Annex Bldg., Tabaco City Hall, Tabaco City  
Email: [bactabaco16@gmail.com](mailto:bactabaco16@gmail.com)  
Website: [tabacocity.gov.ph](http://tabacocity.gov.ph)

13. You may visit the following website:

For downloading of Bidding Documents: [www.tabacocity.com.ph](http://www.tabacocity.com.ph)

July 17, 2023

(Sgd.)  
**ATTY. JOVITO BRON CODERIS, JR.**  
BAC Chairperson

## ***Section II. Instructions to Bidders***

## **1. Scope of Bid**

The Procuring Entity, *City Government of Tabaco* invites Bids for the *Construction/Improvement/Rehabilitation of Various Public Infrastructure Projects (Buildings, Water System and Other Infrastructure Projects), Various Barangays, Tabaco City under Contract ID No. 025-07-2023-INFRA.*

The Procurement Project (referred to herein as “Project”) is for the construction of Works, as described in Section VI (Specifications).

## **2. Funding Information**

2.1. The GOP through the source of funding as indicated below for 2023 in the amount of *Forty-Nine Million Nine Hundred Thousand Six Hundred Thirty-Seven Pesos and Ninety-One Centavos (Php 49,900,637.91).*

2.2. The source of funding is:

*LGUs, the Annual or Supplemental Budget, as approved by the Sanggunian*

## **3. Bidding Requirements**

The Bidding for the Project shall be governed by all the provisions of RA No. 9184 and its 2016 revised IRR, including its Generic Procurement Manual and associated policies, rules and regulations as the primary source thereof, while the herein clauses shall serve as the secondary source thereof.

Any amendments made to the IRR and other GPPB issuances shall be applicable only to the ongoing posting, advertisement, or invitation to bid by the BAC through the issuance of a supplemental or bid bulletin.

The Bidder, by the act of submitting its Bid, shall be deemed to have inspected the site, determined the general characteristics of the contracted Works and the conditions for this Project, such as the location and the nature of the work; (b) climatic conditions; (c) transportation facilities; (c) nature and condition of the terrain, geological conditions at the site communication facilities, requirements, location and availability of construction aggregates and other materials, labor, water, electric power and access roads; and (d) other factors that may affect the cost, duration and execution or implementation of the contract, project, or work and examine all instructions, forms, terms, and project requirements in the Bidding Documents.

## **4. Corrupt, Fraudulent, Collusive, Coercive, and Obstructive Practices**

The Procuring Entity, as well as the Bidders and Contractors, shall observe the highest standard of ethics during the procurement and execution of the contract. They or through an agent shall not engage in corrupt, fraudulent, collusive, coercive, and obstructive practices defined under Annex “I” of the 2016 revised IRR of RA No. 9184 or other integrity violations in competing for the Project.

## **5. Eligible Bidders**

5.1. Only Bids of Bidders found to be legally, technically, and financially capable will be evaluated.

- 5.2. The Bidder must have an experience of having completed a Single Largest Completed Contract (SLCC) that is similar to this Project, equivalent to at least fifty percent (50%) of the ABC adjusted, if necessary, by the Bidder to current prices using the PSA's CPI, except under conditions provided for in Section 23.4.2.4 of the 2016 revised IRR of RA No. 9184.

A contract is considered to be "similar" to the contract to be bid if it has the major categories of work stated in the **BDS**.

- 5.3. For Foreign-funded Procurement, the Procuring Entity and the foreign government/foreign or international financing institution may agree on another track record requirement, as specified in the Bidding Document prepared for this purpose.

- 5.4. The Bidders shall comply with the eligibility criteria under Section 23.4.2 of the 2016 IRR of RA No. 9184.

## **6. Origin of Associated Goods**

There is no restriction on the origin of Goods other than those prohibited by a decision of the UN Security Council taken under Chapter VII of the Charter of the UN.

## **7. Subcontracts**

- 7.1. The Bidder may subcontract portions of the Project to the extent allowed by the Procuring Entity as stated herein, but in no case more than fifty percent (50%) of the Project.

*The Procuring Entity has prescribed that subcontracting is not allowed.*

- 7.1. Subcontracting of any portion of the Project does not relieve the Contractor of any liability or obligation under the Contract. The Supplier will be responsible for the acts, defaults, and negligence of any subcontractor, its agents, servants, or workmen as fully as if these were the Contractor's own acts, defaults, or negligence, or those of its agents, servants, or workmen.

## **8. Pre-Bid Conference**

The Procuring Entity will hold a pre-bid conference for this Project on the specified date and time and either at its physical address as indicated in paragraph 6 of the **IB**.

## **9. Clarification and Amendment of Bidding Documents**

Prospective bidders may request for clarification on and/or interpretation of any part of the Bidding Documents. Such requests must be in writing and received by the Procuring Entity, either at its given address or through electronic mail indicated in the **IB**, at least ten (10) calendar days before the deadline set for the submission and receipt of Bids.

## **10. Documents Comprising the Bid: Eligibility and Technical Components**

- 10.1. The first envelope shall contain the eligibility and technical documents of the Bid as specified in **Section IX. Checklist of Technical and Financial Documents**.

- 10.2. If the eligibility requirements or statements, the bids, and all other documents for submission to the BAC are in foreign language other than English, it must be accompanied by a translation in English, which shall be authenticated by the appropriate Philippine foreign service establishment, post, or the equivalent office having jurisdiction over the foreign bidder's affairs in the Philippines. For Contracting Parties to the Apostille Convention, only the translated documents shall be authenticated through an apostille pursuant to GPPB Resolution No. 13-2019 dated 23 May 2019. The English translation shall govern, for purposes of interpretation of the bid.
- 10.3. A valid PCAB License is required, and in case of joint ventures, a valid special PCAB License, and registration for the type and cost of the contract for this Project. Any additional type of Contractor license or permit shall be indicated in the **BDS**.
- 10.4. A List of Contractor's key personnel (e.g., Project Manager, Project Engineers, Materials Engineers, and Foremen) assigned to the contract to be bid, with their complete qualification and experience data shall be provided. These key personnel must meet the required minimum years of experience set in the **BDS**.
- 10.5. A List of Contractor's major equipment units, which are owned, leased, and/or under purchase agreements, supported by proof of ownership, certification of availability of equipment from the equipment lessor/vendor for the duration of the project, as the case may be, must meet the minimum requirements for the contract set in the **BDS**.

## **11. Documents Comprising the Bid: Financial Component**

- 11.1. The second bid envelope shall contain the financial documents for the Bid as specified in **Section IX. Checklist of Technical and Financial Documents**.
- 11.2. Any bid exceeding the ABC indicated in paragraph 1 of the **IB** shall not be accepted.
- 11.3. For Foreign-funded procurement, a ceiling may be applied to bid prices provided the conditions are met under Section 31.2 of the 2016 revised IRR of RA No. 9184.

## **12. Alternative Bids**

Bidders shall submit offers that comply with the requirements of the Bidding Documents, including the basic technical design as indicated in the drawings and specifications. Unless there is a value engineering clause in the **BDS**, alternative Bids shall not be accepted.

## **13. Bid Prices**

All bid prices for the given scope of work in the Project as awarded shall be considered as fixed prices, and therefore not subject to price escalation during contract implementation, except under extraordinary circumstances as determined by the NEDA and approved by the GPPB pursuant to the revised Guidelines for Contract Price Escalation guidelines.

## **14. Bid and Payment Currencies**

- 14.1. Bid prices may be quoted in the local currency or trade able currency accepted by the BSP at the discretion of the Bidder. However, for purposes of bid evaluation, Bids denominated in foreign currencies shall be converted to Philippine currency based on the exchange rate as published in the BSP reference rate bulletin on the day of the bid opening.
- 14.2. Payment of the contract price shall be made in Philippine Pesos.

## **15. Bid Security**

- 15.1. The Bidder shall submit a Bid Securing Declaration or any form of Bid Security in the amount indicated in the **BDS**, which shall be not less than the percentage of the ABC in accordance with the schedule in the **BDS**.
- 15.2. The Bid and bid security shall be valid until **December 05, 2023**. Any bid not accompanied by an acceptable bid security shall be rejected by the Procuring Entity as non-responsive.

## **16. Sealing and Marking of Bids**

Each Bidder shall submit one copy of the first and second components of its Bid.

The Procuring Entity may request additional hard copies and/or electronic copies of the Bid. However, failure of the Bidders to comply with the said request shall not be a ground for disqualification.

If the Procuring Entity allows the submission of bids through online submission to the given website or any other electronic means, the Bidder shall submit an electronic copy of its Bid, which must be digitally signed. An electronic copy that cannot be opened or is corrupted shall be considered non-responsive and, thus, automatically disqualified.

## **17. Deadline for Submission of Bids**

The Bidders shall submit on the specified date and time and either at its physical address or through online submission as indicated in paragraph 7 of the **IB**.

## **18. Opening and Preliminary Examination of Bids**

- 18.1. The BAC shall open the Bids in public at the time, on the date, and at the place specified in paragraph 9 of the **IB**. The Bidders' representatives who are present shall sign a register evidencing their attendance. In case videoconferencing, webcasting or other similar technologies will be used, attendance of participants shall likewise be recorded by the BAC Secretariat.  
In case the Bids cannot be opened as scheduled due to justifiable reasons, the rescheduling requirements under Section 29 of the 2016 revised IRR of RA No. 9184 shall prevail.
- 18.2. The preliminary examination of Bids shall be governed by Section 30 of the 2016 revised IRR of RA No. 9184.

## **19. Detailed Evaluation and Comparison of Bids**

- 19.1. The Procuring Entity's BAC shall immediately conduct a detailed evaluation of all Bids rated "*passed*" using non-discretionary pass/fail criteria. The BAC

shall consider the conditions in the evaluation of Bids under Section 32.2 of 2016 revised IRR of RA No. 9184.

- 19.2. If the Project allows partial bids, all Bids and combinations of Bids as indicated in the **BDS** shall be received by the same deadline and opened and evaluated simultaneously so as to determine the Bid or combination of Bids offering the lowest calculated cost to the Procuring Entity. Bid Security as required by **ITB** Clause 16 shall be submitted for each contract (lot) separately.
- 19.3. In all cases, the NFCC computation pursuant to Section 23.4.2.6 of the 2016 revised IRR of RA No. 9184 must be sufficient for the total of the ABCs for all the lots participated in by the prospective Bidder.

## **20. Post Qualification**

Within a non-extendible period of *five (5) calendar days* from receipt by the Bidder of the notice from the BAC that it submitted the Lowest Calculated Bid, the Bidder shall submit its *latest income and business tax returns filed and paid through the BIR Electronic Filing and Payment System (eFPS), and other appropriate licenses and permits required by law* and stated in the **BDS**.

## **21. Signing of the Contract**

The documents required in Section 37.2 of the 2016 revised IRR of RA No. 9184 shall form part of the Contract. Additional Contract documents are indicated in the **BDS**.

***Section III. Bid Data Sheet***

# Bid Data Sheet

ITB Clause																																																													
5.2	For this purpose, contracts similar to the Project refer to contracts which have the same major categories of work, which shall be <b><i>construction/ improvement/ rehabilitation/ repair of buildings.</i></b>																																																												
7.1	<i>Subcontracting is not allowed.</i>																																																												
10.3	PCAB Registration Particular includes the following:  Kind of Project and Size Range: <b>Buildings- Medium A</b>																																																												
10.4	The key personnel must meet the required minimum years of experience set below.  <table border="1" style="width: 100%; border-collapse: collapse;"> <thead> <tr> <th style="text-align: center;"><u>Key Personnel</u></th> <th style="text-align: center;"><u>General Experience</u></th> <th style="text-align: center;"><u>Relevant Experience</u></th> </tr> </thead> <tbody> <tr> <td>Project Manager</td> <td style="text-align: center;">5</td> <td style="text-align: center;">3</td> </tr> <tr> <td>Project Engineer</td> <td style="text-align: center;">5</td> <td style="text-align: center;">3</td> </tr> <tr> <td>Materials Engineer I</td> <td style="text-align: center;">3</td> <td style="text-align: center;">1</td> </tr> <tr> <td>Construction Foreman</td> <td style="text-align: center;">3</td> <td style="text-align: center;">1</td> </tr> <tr> <td>Safety Officer</td> <td style="text-align: center;">40 hrs training</td> <td style="text-align: center;">40 hrs training</td> </tr> <tr> <td>First Aider</td> <td style="text-align: center;">-</td> <td style="text-align: center;">-</td> </tr> </tbody> </table>	<u>Key Personnel</u>	<u>General Experience</u>	<u>Relevant Experience</u>	Project Manager	5	3	Project Engineer	5	3	Materials Engineer I	3	1	Construction Foreman	3	1	Safety Officer	40 hrs training	40 hrs training	First Aider	-	-																																							
<u>Key Personnel</u>	<u>General Experience</u>	<u>Relevant Experience</u>																																																											
Project Manager	5	3																																																											
Project Engineer	5	3																																																											
Materials Engineer I	3	1																																																											
Construction Foreman	3	1																																																											
Safety Officer	40 hrs training	40 hrs training																																																											
First Aider	-	-																																																											
10.5	The minimum major equipment requirements are the following:  <table border="1" style="width: 100%; border-collapse: collapse;"> <thead> <tr> <th style="text-align: center;"><u>Equipment</u></th> <th style="text-align: center;"><u>Capacity</u></th> <th style="text-align: center;"><u>Number of Units</u></th> </tr> </thead> <tbody> <tr> <td>Concrete Mixer</td> <td style="text-align: center;">One Bagger</td> <td style="text-align: center;">6</td> </tr> <tr> <td>Water Truck</td> <td style="text-align: center;">-</td> <td style="text-align: center;">2</td> </tr> <tr> <td>Concrete Saw/Cutter</td> <td style="text-align: center;">-</td> <td style="text-align: center;">2</td> </tr> <tr> <td>Bar Cutter / Bender</td> <td style="text-align: center;">-</td> <td style="text-align: center;">5</td> </tr> <tr> <td>Backhoe, Wheel type</td> <td style="text-align: center;">-</td> <td style="text-align: center;">1</td> </tr> <tr> <td>Concrete Vibrator, 5HP Gasoline drive unit with 2" shaft</td> <td style="text-align: center;">-</td> <td style="text-align: center;">4</td> </tr> <tr> <td>Backhoe, Crawler Type</td> <td style="text-align: center;">0.80cu.m</td> <td style="text-align: center;">1</td> </tr> <tr> <td>Welding Machine with Gen Set</td> <td style="text-align: center;">300amp</td> <td style="text-align: center;">4</td> </tr> <tr> <td>Stake Truck</td> <td style="text-align: center;">6-8M/ 195Hp</td> <td style="text-align: center;">3</td> </tr> <tr> <td>Self-Loading Tuck</td> <td style="text-align: center;">-</td> <td style="text-align: center;">1</td> </tr> <tr> <td>Road Grader</td> <td style="text-align: center;">-</td> <td style="text-align: center;">1</td> </tr> <tr> <td>Road Roller, Vibratory</td> <td style="text-align: center;">-</td> <td style="text-align: center;">1</td> </tr> <tr> <td>Fusion Machine</td> <td style="text-align: center;">800W</td> <td style="text-align: center;">1</td> </tr> <tr> <td>Drilling Rig</td> <td style="text-align: center;">-</td> <td style="text-align: center;">1</td> </tr> <tr> <td>Surge &amp; Bailer Equipment</td> <td style="text-align: center;">-</td> <td style="text-align: center;">1</td> </tr> <tr> <td>High Pressure Velocity Water Pump, with engine</td> <td style="text-align: center;">-</td> <td style="text-align: center;">1</td> </tr> <tr> <td>Air Compressor, complete accessories</td> <td style="text-align: center;">-</td> <td style="text-align: center;">2</td> </tr> <tr> <td>Submersible Pump, complete accessories</td> <td style="text-align: center;">-</td> <td style="text-align: center;">2</td> </tr> <tr> <td>Enough Handtools</td> <td style="text-align: center;">-</td> <td style="text-align: center;">Enough</td> </tr> </tbody> </table>	<u>Equipment</u>	<u>Capacity</u>	<u>Number of Units</u>	Concrete Mixer	One Bagger	6	Water Truck	-	2	Concrete Saw/Cutter	-	2	Bar Cutter / Bender	-	5	Backhoe, Wheel type	-	1	Concrete Vibrator, 5HP Gasoline drive unit with 2" shaft	-	4	Backhoe, Crawler Type	0.80cu.m	1	Welding Machine with Gen Set	300amp	4	Stake Truck	6-8M/ 195Hp	3	Self-Loading Tuck	-	1	Road Grader	-	1	Road Roller, Vibratory	-	1	Fusion Machine	800W	1	Drilling Rig	-	1	Surge & Bailer Equipment	-	1	High Pressure Velocity Water Pump, with engine	-	1	Air Compressor, complete accessories	-	2	Submersible Pump, complete accessories	-	2	Enough Handtools	-	Enough
<u>Equipment</u>	<u>Capacity</u>	<u>Number of Units</u>																																																											
Concrete Mixer	One Bagger	6																																																											
Water Truck	-	2																																																											
Concrete Saw/Cutter	-	2																																																											
Bar Cutter / Bender	-	5																																																											
Backhoe, Wheel type	-	1																																																											
Concrete Vibrator, 5HP Gasoline drive unit with 2" shaft	-	4																																																											
Backhoe, Crawler Type	0.80cu.m	1																																																											
Welding Machine with Gen Set	300amp	4																																																											
Stake Truck	6-8M/ 195Hp	3																																																											
Self-Loading Tuck	-	1																																																											
Road Grader	-	1																																																											
Road Roller, Vibratory	-	1																																																											
Fusion Machine	800W	1																																																											
Drilling Rig	-	1																																																											
Surge & Bailer Equipment	-	1																																																											
High Pressure Velocity Water Pump, with engine	-	1																																																											
Air Compressor, complete accessories	-	2																																																											
Submersible Pump, complete accessories	-	2																																																											
Enough Handtools	-	Enough																																																											
12	Alternative Bids shall not be accepted.																																																												
15.1	The bid security shall be in the form of a Bid Securing Declaration or any of the following forms and amounts: a. The amount of not less than <b><i>Php 998,012.75 [2% of ABC]</i></b> , draft/guarantee or irrevocable letter of credit;																																																												

	b. The amount of not less than <b><i>Php 2,495,031.89 [5% of ABC]</i></b> if bid security is in Surety Bond.
16	Each Bidder shall submit one (1) original and two (2) copies of the first and second components of its bid. Should there be discrepancies, the original copy would prevail.
19.2	Partial bids are not allowed.
20	Other appropriate licenses and permits: <ul style="list-style-type: none"> <li><b><i>a. Valid and Current Registration Certificate (SEC, DTI, or CDA, whichever is applicable), all pages</i></b></li> <li><b><i>b. Valid and Current Mayor's Permit</i></b></li> <li><b><i>c. Valid Tax Clearance for Bidding Purposes</i></b></li> <li><b><i>d. PCAB License</i></b></li> <li><b><i>e. Latest Audited Financial Statements stamped received by the BIR or its duly authorized institution</i></b></li> <li><b><i>f. BIR Registration Certificate</i></b></li> </ul>
21	Additional contract documents relevant to the Project: <ul style="list-style-type: none"> <li>A. Construction Safety and Health Program approved by the DOLE;</li> <li>B. Contractor's All Risk Insurance (CARI);</li> <li>C. Construction Schedule and S-curve / Bar Chart / PERT CPM Network Diagram and detailed computations of contract time.</li> <li>D. Manpower Utilization Schedule</li> <li>E. Narrative Description of Construction Procedures and Methods</li> <li>F. Equipment Utilization Schedule</li> </ul>

***Section IV. General Conditions of Contract***

## 1. Scope of Contract

This Contract shall include all such items, although not specifically mentioned, that can be reasonably inferred as being required for its completion as if such items were expressly mentioned herein. All the provisions of RA No. 9184 and its 2016 revised IRR, including the Generic Procurement Manual, and associated issuances, constitute the primary source for the terms and conditions of the Contract, and thus, applicable in contract implementation. Herein clauses shall serve as the secondary source for the terms and conditions of the Contract.

This is without prejudice to Sections 74.1 and 74.2 of the 2016 revised IRR of RA No. 9184 allowing the GPPB to amend the IRR, which shall be applied to all procurement activities, the advertisement, posting, or invitation of which were issued after the effectivity of the said amendment.

## 2. Sectional Completion of Works

If sectional completion is specified in the **Special Conditions of Contract (SCC)**, references in the Conditions of Contract to the Works, the Completion Date, and the Intended Completion Date shall apply to any Section of the Works (other than references to the Completion Date and Intended Completion Date for the whole of the Works).

## 3. Possession of Site

4.1. The Procuring Entity shall give possession of all or parts of the Site to the Contractor based on the schedule of delivery indicated in the **SCC**, which corresponds to the execution of the Works. If the Contractor suffers delay or incurs cost from failure on the part of the Procuring Entity to give possession in accordance with the terms of this clause, the Procuring Entity's Representative shall give the Contractor a Contract Time Extension and certify such sum as fair to cover the cost incurred, which sum shall be paid by Procuring Entity.

4.2. If possession of a portion is not given by the above date, the Procuring Entity will be deemed to have delayed the start of the relevant activities. The resulting adjustments in contract time to address such delay may be addressed through contract extension provided under Annex "E" of the 2016 revised IRR of RA No. 9184.

## 4. The Contractor's Obligations

The Contractor shall employ the key personnel named in the Schedule of Key Personnel indicating their designation, in accordance with **ITB** Clause 10.3 and specified in the **BDS**, to carry out the supervision of the Works.

The Procuring Entity will approve any proposed replacement of key personnel only if their relevant qualifications and abilities are equal to or better than those of the personnel listed in the Schedule.

## 5. Performance Security

5.1. Within ten (10) calendar days from receipt of the Notice of Award from the Procuring Entity but in no case later than the signing of the contract by both parties, the successful Bidder shall furnish the performance security in any of the forms prescribed in Section 39 of the 2016 revised IRR.

5.2. The Contractor, by entering into the Contract with the Procuring Entity, acknowledges the right of the Procuring Entity to institute action pursuant to RA No. 3688 against any subcontractor be they an individual, firm, partnership, corporation, or association supplying the Contractor with labor, materials and/or equipment for the performance of this Contract.

## **6. Site Investigation Reports**

The Contractor, in preparing the Bid, shall rely on any Site Investigation Reports referred to in the SCC supplemented by any information obtained by the Contractor.

## **7. Warranty**

7.1. In case the Contractor fails to undertake the repair works under Section 62.2.2 of the 2016 revised IRR, the Procuring Entity shall forfeit its performance security, subject its property(ies) to attachment or garnishment proceedings, and perpetually disqualify it from participating in any public bidding. All payables of the GOP in his favor shall be offset to recover the costs.

7.2. The warranty against Structural Defects/Failures, except that occasioned-on force majeure, shall cover the period from the date of issuance of the Certificate of Final Acceptance by the Procuring Entity. Specific duration of the warranty is found in the SCC.

## **8. Liability of the Contractor**

Subject to additional provisions, if any, set forth in the SCC, the Contractor's liability under this Contract shall be as provided by the laws of the Republic of the Philippines.

If the Contractor is a joint venture, all partners to the joint venture shall be jointly and severally liable to the Procuring Entity.

## **9. Termination for Other Causes**

Contract termination shall be initiated in case it is determined *prima facie* by the Procuring Entity that the Contractor has engaged, before, or during the implementation of the contract, in unlawful deeds and behaviors relative to contract acquisition and implementation, such as, but not limited to corrupt, fraudulent, collusive, coercive, and obstructive practices as stated in ITB Clause 4.

## **10. Dayworks**

Subject to the guidelines on Variation Order in Annex "E" of the 2016 revised IRR of RA No. 9184, and if applicable as indicated in the SCC, the Day works rates in the Contractor's Bid shall be used for small additional amounts of work only when the Procuring Entity's Representative has given written instructions in advance for additional work to be paid for in that way.

## **11. Program of Work**

11.1. The Contractor shall submit to the Procuring Entity's Representative for approval the said Program of Work showing the general methods, arrangements, order, and timing for all the activities in the Works. The submissions of the Program of Work are indicated in the SCC.

- 11.2. The Contractor shall submit to the Procuring Entity's Representative for approval an updated Program of Work at intervals no longer than the period stated in the **SCC**. If the Contractor does not submit an updated Program of Work within this period, the Procuring Entity's Representative may withhold the amount stated in the **SCC** from the next payment certificate and continue to withhold this amount until the next payment after the date on which the overdue Program of Work has been submitted.

## **12. Instructions, Inspections and Audits**

The Contractor shall permit the GOP or the Procuring Entity to inspect the Contractor's accounts and records relating to the performance of the Contractor and to have them audited by auditors of the GOP or the Procuring Entity, as may be required.

## **13. Advance Payment**

The Procuring Entity shall, upon a written request of the Contractor which shall be submitted as a Contract document, make an advance payment to the Contractor in an amount not exceeding fifteen percent (15%) of the total contract price, to be made in lump sum, or at the most two installments according to a schedule specified in the **SCC**, subject to the requirements in Annex "E" of the 2016 revised IRR of RA No. 9184.

## **14. Progress Payments**

The Contractor may submit a request for payment for Work accomplished. Such requests for payment shall be verified and certified by the Procuring Entity's Representative/Project Engineer. Except as otherwise stipulated in the **SCC**, materials and equipment delivered on the site but not completely put in place shall not be included for payment.

## **15. Operating and Maintenance Manuals**

- 15.1. If required, the Contractor will provide "as built" Drawings and/or operating and maintenance manuals as specified in the **SCC**.
- 15.2. If the Contractor does not provide the Drawings and/or manuals by the dates stated above, or they do not receive the Procuring Entity's Representative's approval, the Procuring Entity's Representative may withhold the amount stated in the **SCC** from payments due to the Contractor.

*Section V. Special Conditions of Contract*

# Special Conditions of Contract

GCC Clause	
2	No sectional completion.
4.1	Upon receipt of Notice to Proceed.
6	None
7.2	Five (5) years.
10	No day works are applicable to the contract.
11.1	The Contractor shall submit the Program of Work to the Procuring Entity's Representative within <i>[insert number]</i> days of delivery of the Notice of Award.
11.2	The amount to be withheld for late submission of an updated Program of Work is <i>[insert amount]</i> .
13	The amount of the advance payment is <i>15% of the total contract price and schedule of payment</i>
14	Materials and equipment delivered on the site but not completely put in place shall not be included for payment.
15.1	The date by which "as built" drawings are required is after completion of the project.
15.2	The amount to be withheld for failing to produce "as built" drawings and/or operating and maintenance manuals by the date required is <i>[amount in local currency]</i> .

## *Section VI. Specifications*

**Project Title:** Construction/Improvement/Rehabilitation of Various Public Infrastructure Projects (Buildings, Water System and Other Infrastructure Projects)

**Location:** Various Barangays, Tabaco City

**Contract ID No.** 025-07-2023-INFRA

**Approved Budget for the Contract (ABC):** Php 49,900,637.91

**Duration:** 240 Calendar Days

Item No.	Project Description	Approved Budget per Item (Php)
<b>A.</b>	<b>Building</b>	
1	Rehabilitation of San Miguel Island Multi-Purpose Hall at Visita, San Miguel Island, Tabaco City	3,000,000.00
2	Construction of Child Development Center at Brgy. Bangkilingan, Tabaco City	3,485,810.00
3	Construction of Child Development Center at Brgy. Sua-Igot, Tabaco City	3,705,590.00
4	Rehabilitation / Improvement of Quinastillojan Elementary School, Quinastillojan, Tabaco City	2,494,274.86
5	Rehabilitation / Improvement of San Antonio Elementary School, Brgy. San Antonio, Tabaco City	3,595,700.00
6	Rehabilitation / Improvement of Fatima Elementary School, Brgy. Fatima, Tabaco City	2,500,000.00
7	Construction of Temporary Learning Space, Various Schools, Tabaco City	2,640,745.85
<b>B.</b>	<b>Water System</b>	
8	Rehabilitation of Basagan Water System, Brgy. Basagan, Tabaco City	993,487.12
9	Rehabilitation of Bonot Water System, Brgy. Bonot, Tabaco City	2,499,520.79
10	Rehabilitation of Buhian Water System, Brgy. Buhian, Tabaco City	996,783.69
11	Rehabilitation of Pinagbobong Water System, Brgy. Pinagbobong, Tabaco City	997,431.27
12	Rehabilitation of Bognabong Water System, Brgy. Bognabong, Tabaco City	996,428.37
13	Rehabilitation of Mariroc Water System, Brgy. Mariroc, Tabaco City	996,172.59
14	Rehab/Improvement of San Miguel Island (SMI) Water System, Brgy. Visita and Sitio Malictay, San Miguel Island, Tabaco City	4,998,693.37
<b>C.</b>	<b>Other Infrastructures</b>	
15	Rechanneling/Desilting of Tagas River, Divino Rostro-San Roque Section, (Downstream of Tagas Bridge), Tabaco City	5,000,000.00
16	Rehabilitation of Irrigation System, Brgy. Guinobat, Tabaco City	5,000,000.00
17	Rehabilitation/Improvement of San Miguel Island Roadways, San Miguel Island, Tabaco City (Hacienda to Visita Section)	5,000,000.00
18	Rehabilitation / Improvement of Roadways at Tabaco South Elementary School, Tabaco City	1,000,000.00

## SCOPE OF WORK AND TECHNICAL SPECIFICATIONS

*All works to be undertaken shall be in accordance with the plans and working drawings. It includes the furnishing of all materials, labor and equipment with supervision necessary for the complete construction of the said project.*

### **ITEMS OF WORK INCLUDED**

#### **A. Building**

##### ***1. Rehabilitation of San Miguel Island Multi-Purpose Hall at Visita, San Miguel Island, Tabaco City***

## **Tile Works**

This scope of works includes laying of tile workmanship (please refer to the plans for the details). The Tiles shall be laid according to details and color scheme approved by the consulting Architect and shall be carefully matched and the seams cut.

All seams and edges shall be cemented carefully snug fit with the manufacturer's adhesive for the purpose. The surface of the finish floor shall be left smooth, clean and in first class condition.

Before application of mortar bed, dampen the surface of the scratch coat evenly to obtain uniform suction. Use temporary or spot grounds to control the thickness of the mortar bed. Fill out the mortar bed even with grounds and rod it to a true plane.

Apply the mortar bed over an area no greater than can be covered with tile while the coat is still plastic. Allow no single application of mortar to be ¼ inch thick. Completely immerse wall Is in clean water and soak of at least ½ hour. After removal, stack tiles on edge long enough to drain off excess water. Re-soak and drain individual tiles that dry along edges.

Apply a bond coat 1/32 – 1/16 inches which to the plastic setting bed or to the back of each sheet or tile. Press tiles firmly into the bed and beat into place within one hour. Lay tile fields in rectangular block areas not exceeding 25 by 25 inches.

Wall to be finished with glazes tiles or elsewhere indicated as such on the drawings, shall be chipped off, cleaned thoroughly with wire brush, washed with clean water and the painted up solid with 1: 2 cement mortar before applying the wainscoting.

The tiles and their accessories shall be from imperfection that affects their quality, appearance and strength. The tiles should be thoroughly soaked in the water before installation. All tiles for wainscoting shall be set to correct grades and levels true to line, laid even and shall be set truly vertical in accordance with the details shown on the drawings. The tiles shall be firmly laid on 1: 2 cement mortars and the joint painted neatly with white cement paste.

Glazed tile shall be cushion-edge locally manufactured of the size or type and pattern shown on drawings and/or specified above. Use Granito or Mariwasa or another approved equivalent.

## **Electrical Works**

The work to be undertaken here under includes the furnishing of all labor, materials, equipment, tools and supervision to the project and to complete the good working condition of the electrical system for the proposed building, refer to the plans specified:

- Solar Panel with inverter, battery and other devices
- Generator Set

All works hereunder shall comply with the requirements of the latest edition of the Philippine Electrical Code of the Philippines and the Rules and Regulations of the Local Electric Company.

## **Fire Protection Sprinkle System (AFSS)**

This item shall consist of furnishing and installation of Fire Protection Sprinkler System (AFSS), refer to the plans specified:

- 6 set *Fire Extinguisher, 10lbs, ABC with bracket*
- 7 set *Smoke detector w/ base, battery operated, 9volts*
- 3 set *Fire Alarm Bell, 6" diameter*
- 3 set *Fire Alarm Manual Station*

## **Amenities**

This item covers the supply of labor, materials and equipment necessary for the fabrication of Wooden Table with drawer with Wooden Chair and Wooden Cabinet. All materials shall be of approved high quality. Please refer to the plan for the complete details.

## **Provision of Bunkhouse (Rental Basis) & Other Facilities**

This item includes the construction the temporary facilities for the engineer and temporary bunkhouse for rental basis including the power and water supply for the storage of the materials / equipment needed for the whole duration of the project.

## **Occupational Construction Safety and Health**

The contractor needs to establish safety goals and objectives develop and implement a written Safety and Health program. The contractor also needs to provide a Part-Time Safety Practitioner and First Aider who undergone training at DOLE/ Red cross respectively.

## **Project Billboard/ Signboard**

Fabrication & installation of plywood size (1.2m x 2.4m) standard billboard with coco lumber frame.

## ***2. Construction of Child Development Center at Brgy. Bangkilingan, Tabaco City***

### **Earthworks**

#### *1. Clearing and Grubbing*

- This item of work consists of clearing, grubbing, removing and disposing all vegetation and debris as designated in the Contract, except those objects that are designated to remain in place or are to be removed in consonance with other provisions of this Specification. The work shall also include the preservation from injury or defacement of all objects designated to remain.
- The engineer will establish the limits of work and designate all trees, shrubs, plants and other things to remain. The Contractor shall preserve all objects designated to remain.

#### *2. Structure Excavation (Common Soil)*

- This item of work includes excavation for footing, tie beam, and in conformity with the lines, grades and dimensions shown on the Plans or established by the Engineer.
- All suitable materials removed from the excavation shall be used in the formation of the embankment, subgrade, shoulders, slopes, bedding, and backfill for structures, and for other purposes shown on the Plans or as directed.
- The Engineer will designate as unsuitable those soils that cannot be properly compacted in embankments. Only approved materials shall be used in the construction of embankments and backfills. Materials encountered in the excavation and determined by the Engineer as suitable for topping, road finishing, slope protection, or other purposes shall be conserved and utilized as directed by the Engineer. Borrow materials shall not be placed until after the readily accessible materials from roadway excavation has been placed in the fill, unless otherwise permitted or directed by the Engineer.

#### *3. Embankment (From Structure Excavation)*

- This item of work includes embankment from structure excavation with a volume of 40.56 cu. m. and prior to construction of embankment, all necessary clearing and grubbing in that area shall have been performed in conformity with Item 100, Clearing and Grubbing.

- Embankment construction shall consist of constructing roadway embankments, including preparation of the areas upon which they are to be placed; the construction of dikes within or adjacent to the roadway; the placing and compacting of approved material within roadway areas where unsuitable material has been removed; and the placing and compacting of embankment material in holes, pits, and other depressions within the roadway area.
- Embankments and backfills shall contain no muck, peat, sod, roots or other deleterious matter. Rocks, broken concrete or other solid, bulky materials shall not be placed in embankment areas where piling is to be placed or driven.

#### 4. Embankment (From Borrow)

- This item of work includes embankment from borrow with a volume of 38.63 cu. m. and prior to construction of embankment, all necessary clearing and grubbing in that area shall have been performed in conformity with Item 100, Clearing and Grubbing.
- Embankment construction shall consist of constructing roadway embankments, including preparation of the areas upon which they are to be placed; the construction of dikes within or adjacent to the roadway; the placing and compacting of approved material within roadway areas where unsuitable material has been removed; and the placing and compacting of embankment material in holes, pits, and other depressions within the roadway area.
- Embankments and backfills shall contain no muck, peat, sod, roots or other deleterious matter. Rocks, broken concrete or other solid, bulky materials shall not be placed in embankment areas where piling is to be placed or driven.

#### 5. Gravel Fill

- This item shall consist of placing 100mm thk gravel fill in accordance with the specification and in conformity with the line, grades and dimensions shown on the plans or established by the engineer.

### **Plain and Reinforced Concrete Works**

#### 1. Structural Concrete (Class A) 28 days

- All concrete surfaces including those indicated as cement plaster on drawings, in all interior walls and other concrete surfaces without specified finish, shall be done and applied in accordance with the following provisions.
- Immediately after the removal of forms, all projecting wires and bolts and other devices and for drying forms shall be cut off beneath the surface finishes. All hole voids and other defects shall be enlarged, roughened and required with a mortar of the same grade as that even surface similar concrete surfaces to the satisfaction of the engineer. Cracks shall be cut out and the sides dove tailed to a depth of at least 5cm and shall thereafter be filled with a mortar of the same grade as that in the original surface.

#### 2. Reinforcing Steel (Deformed, Grade 40)

- This item covers the supply of labor, materials and equipment necessary for the installation of reinforcing steel bars (Grade 40) of structures. (Please refer to plans).
- Reinforcing bars shall be standard commercial, deformed steel such as NSC steel or other locally available equivalent. Steel bars shall be free from rust scales. Splices in bars shall be made at critical points of maximum stress.

#### 3. Formworks and False Works

- This item of works includes the furnishing and installation of ¼” thk Marine plywood, 2”x3” coco lumber, tie wire and assorted nails.

- Construction of forms-construction from sufficiently tight to prevent leakage, securely brace and shore forms to prevent displacement and to safely support construction loads. Forms shall not be removed until concrete is set.

## **Finishing and Other Civil Works**

### *1. Soil Poisoning*

- At the time soil poisoning is to be applied, the soil to be treated shall be in friable condition with low moisture content so as to allow uniform distribution of the toxicant agents. Toxicants shall be applied at least 12 hours prior to placement of concrete which shall be in contact with treated materials.
- Treatment of the soil on the exterior sides of the foundation walls, grade beams and similar structures shall be done prior to final grading and planting or landscaping work to avoid disturbance of the toxicant barriers by such operations.

### *2. Catch Basin (Concrete)*

- This item shall consist of the construction or reconstruction of concrete catch basin in accordance with this Specification and in reasonably close conformity with the lines and grades shown on the Plans or as established by the Engineer.

### *3. Septic Tank*

- This item shall consist of the construction of septic tank in accordance with this Specifications and in conformity with the lines and grades shown on the Plans or as established by the Engineer.

### *4. Sewer Line Works*

- This item shall consist of furnishing all materials, equipment and labor for the complete sewerage system, is an underground pipe to transport sewage from the building (but not storm water) to a sewage treatment plant or disposal. Sewerage system should keep the system in good condition.
- Use sewer pipes, fittings, accessories, materials and all work obviously necessary for the proper functioning of all specifications or indicated in the drawings are included in this work.

### *5. Storm Drainage and Downspout*

- This item shall consist of furnishing all materials, equipment and labor for the complete installation of the storm drainage system to include all pipings, gutters, canal, catch basins, junction boxes, handholes, manholes, and other appurtenant structures, and sewerage system to include all sanitary sewer piping and septic vault where no public sewer exist, from the building to the point of discharge.

### *6. Plumbing Works*

- All works shall comply with the requirements and provisions of the National Plumbing Code of the Philippines.
- All fixtures shall be separately trapped. The trap shall be placed as near as possible to the fixtures
- No fixtures shall be double trapped.
- Horizontal waste lines shall be secured by hooks to the building frames or embedded in concrete whenever necessary.

- Horizontal waste line receiving the discharge from two or more fixtures shall be provided with the vents connected to the stack vents at least 1.20m from the floor level.
- Waterlines: potable waterline pipes shall be extended to all the fixture outlets and equipment from the gate valve near the riser.
- Provide and install complete floor drains shown on plans, brass or nickel plated 4" x 4" with the waste line, P-traps and vents.
- All pipes, fitting traps, fixtures, appurtenances and devices of plumbing and drainage system shall be inspected and approved by the architect/engineer to ensure compliance with the entire requirement of all codes and regulations referred in these specifications.
- Use sanitary pipes, fittings, accessories, materials and all work obviously necessary for the proper functioning of all specifications or indicated in the drawings are included in this work.

#### *7. Ceiling (4.5mm, Metal Frame, Fiber)*

- This item of work includes the installation of ceiling by using 4.5mm thk Fiber Cement Board and Metal framing.
- The ceiling must be installed 100mm from the bottom of the roof beam.
- All materials shall be of approved high quality. Please refer to the plan for the complete details.

#### *8. Steel Casement Window*

- This item of work includes the installation of Steel Casement Window.
- Windows shall be of size and type indicted in the schedule and as specified therein.

#### *9. Doors (Wooden Panel / Flush)*

- All doors specified in the plan must be manufactured in accordance to its sizes and by a manufacturer of good quality.
- Doors shall be extended through the full width of sills with ten on and mortise joints, glued well and planed. It shall hang straight and true to plump.

#### *10. Doors and Window Screen*

- All doors and window screen in the plan must be manufactured in accordance to its sizes and by a manufacturer of good quality.

#### *11. Waterproofing (Cement-Base)*

- Furnish all materials, equipment, labor, plant and other facilities to complete all waterproofing works as shown on the plans and hereinafter specified.
- All works included under this division shall be subject to the General Conditions accompanying these specifications. The contractor is required to refer especially thereto.
- All concrete surface shall be wood toweled smooth, firm, dry, clean and free of loose or foreign materials and without any projects, indentation and other imperfections.
- Apply 2 coats of cold applied waterproofing and vertical wall to a height of 10" (250mm) unless otherwise shown on the drawings the area to be waterproofed.
- Pour all holes of exterior concrete hollow blocks with class B concrete (coarse, aggregate shall be of such size so that no voids are formed)

- The installation of waterproofing shall be done by an approved roofing contractor by the manufacturer.
- No substitution of materials shall be made unless authorized in writing by the Architect prior to starting the work of waterproofing.

#### *12. Unglazed Tiles*

- The process of firing the tiles infuses the glaze into the top layer of the clay of the tile. But, if no coating is applied on the tile before firing it, then it will be called an unglazed tile.

#### *13. Glazed Tiles*

- Glazed tile shall be cushion-edge locally manufactured of the size or type and pattern shown on drawings and/or specified above. Use Granito or Mariwasa or another approved equivalent.

#### *14. Tactiles (PWD Ramp)*

- This item of work includes the installation of 20cm x 20cm tactiles for PWD Ramp.

#### *15. Cement Plaster / Floor Finish*

- Interior walls and other concrete surfaces without specified finish, shall be done and applied in accordance with the following provisions.
- Immediately after the removal of forms, all projecting wires and bolts and other devices used for trying forms shall be cut off at least ½ cm. beneath the surface finishes. All hole voids, depressions and other defects shall be enlarged, roughened and repaired with mortar of the same grade as that even surface similar surface all to the satisfaction of the Engineer. Cracks shall be cut out and the sides dove tailed to a depth of at least 5cm. and shall thereafter with a mortar of the same grade as that in the original surface.
- The concrete mixture to be used for all plastering works must be CLASS “A” MORTARS – 1:3 by volume.

#### *16. CHB Non-Load Bearing, 100mm / 150mm (Incl. RSB)*

- 100mm / 150mm thick for all interior walls unless otherwise indicated. Use 400 psi for non-load bearing blocks and 700 psi for load bearing blocks where required.

#### *17. Railings*

- This item shall consist of furnishing and constructing posts and guardrails of the types called for in the contract and in accordance with this Specification, at the locations, and in conformity with the lines and grades shown on the Plans, or as required by the Engineer.

#### *18. Carpentry Works*

- This item covers the supply of labor, materials and equipment necessary for the fabrication of White Board, Kitchen Cabinet, and Tables & Chair. All materials shall be of approved high quality. Please refer to the plan for the complete details.

#### *19. Painting Works*

- The works covered by this section of the specification consist in the proper preparation of surface, furnishing of labor, material tools appliances, scaffolding and other necessary equipment and in the performing of all operations in connection with painting, varnishing and wall paper works, complete in accordance with the color scheme and specified therein.

- This section of the specification covers the complete painting and finishing of the wood surface, the painting of plasters, concrete, unfinished metal and other surfaces throughout the interior and exterior of the building.
- All paint materials shall meet the requirements of the specifications by the standardization committee on supplies and shall be delivered on the job in the original container, with labels intact and seal unbroken.
- Tinting colors for all paint shall be colors in oil, ground and pure in linseed oil and of the grade obtainable.
- Color pigments shall be used to produce the exact shades of paint, which shall conform of the approved color scheme of the building.
- Except as otherwise noted, color of the priming coat shall be lighter than the body coat and color of the body lighter than the finish coat. The first coat shall be white.
- Wood surfaces shall be thoroughly cleaned, smoothly had pressed and well sand papered before any paint or finish is applied.
- Before applying paint to concrete, cement plaster or other cement finishes, etc. This surface must be allowed to dry thoroughly.

#### *20. Fabrication & Installation of Signages & Logo*

- The works includes fabrication of Signages and Logo using stainless steel.

#### *21. Handwash Area*

- This item shall consist of furnishing and construction of handwash area for in the contract and accordance with this Specifications, at the locations, and in conformity with the lines and grades shown on the Plans, or as required by the Engineer.

### **Electrical Works**

The work to be undertaken here under includes the furnishing of all labor, materials, equipment, tools and supervision to the project and to complete the good working condition of the electrical system for the proposed building, refer to the plans specified:

- Conduits, Boxes and Fittings
- Wires and Wiring Devices
- Panelboard with Main and Brain Breakers
- Lighting Fixtures and Lamps
- Grounding System

All works hereunder shall comply with the requirements of the latest edition of the Philippine

### **Other General Requirements**

#### *1. Provision of Bunkhouse (Rental Basis) & Other Facilities*

- This item includes the construction the temporary facilities for the engineer and temporary bunkhouse for rental basis including the power and water supply for the storage of the materials / equipment needed for the whole duration of the project.

#### *2. Occupational Construction Safety and Health*

- The contractor needs to establish safety goals and objectives develop and implement a written Safety and Health program. The contractor also needs to provide a Part-Time Safety Practitioner and First Aider who undergone training at DOLE/ Red cross respectively.

### 3. *Project Billboard/ Signboard*

- Fabrication & installation of plywood size (1.2m x 2.4m) standard billboard with coco lumber frame.

### 3. *Construction of Child Development Center at Brgy. Sua-Igot, Tabaco City*

#### **Earthworks**

##### 1. *Clearing and Grubbing*

- This item of work consists of clearing, grubbing, removing and disposing all vegetation and debris as designated in the Contract, except those objects that are designated to remain in place or are to be removed in consonance with other provisions of this Specification. The work shall also include the preservation from injury or defacement of all objects designated to remain.
- The engineer will establish the limits of work and designate all trees, shrubs, plants and other things to remain. The Contractor shall preserve all objects designated to remain.

##### 2. *Structure Excavation (Common Soil)*

- This item of work includes excavation for footing, tie beam, and in conformity with the lines, grades and dimensions shown on the Plans or established by the Engineer.
- All suitable materials removed from the excavation shall be used in the formation of the embankment, subgrade, shoulders, slopes, bedding, and backfill for structures, and for other purposes shown on the Plans or as directed.
- The Engineer will designate as unsuitable those soils that cannot be properly compacted in embankments. Only approved materials shall be used in the construction of embankments and backfills. Materials encountered in the excavation and determined by the Engineer as suitable for topping, road finishing, slope protection, or other purposes shall be conserved and utilized as directed by the Engineer. Borrow materials shall not be placed until after the readily accessible materials from roadway excavation has been placed in the fill, unless otherwise permitted or directed by the Engineer.

##### 3. *Embankment (From Structure Excavation)*

- This item of work includes embankment from structure excavation with a volume of 40.56 cu. m. and prior to construction of embankment, all necessary clearing and grubbing in that area shall have been performed in conformity with Item 100, Clearing and Grubbing.
- Embankment construction shall consist of constructing roadway embankments, including preparation of the areas upon which they are to be placed; the construction of dikes within or adjacent to the roadway; the placing and compacting of approved material within roadway areas where unsuitable material has been removed; and the placing and compacting of embankment material in holes, pits, and other depressions within the roadway area.
- Embankments and backfills shall contain no muck, peat, sod, roots or other deleterious matter. Rocks, broken concrete or other solid, bulky materials shall not be placed in embankment areas where piling is to be placed or driven.

#### *4. Embankment (From Borrow)*

- This item of work includes embankment from borrow with a volume of 120.19 cu. m. and prior to construction of embankment, all necessary clearing and grubbing in that area shall have been performed in conformity with Item 100, Clearing and Grubbing.
- Embankment construction shall consist of constructing roadway embankments, including preparation of the areas upon which they are to be placed; the construction of dikes within or adjacent to the roadway; the placing and compacting of approved material within roadway areas where unsuitable material has been removed; and the placing and compacting of embankment material in holes, pits, and other depressions within the roadway area.
- Embankments and backfills shall contain no muck, peat, sod, roots or other deleterious matter. Rocks, broken concrete or other solid, bulky materials shall not be placed in embankment areas where piling is to be placed or driven.

#### *5. Gravel Fill*

- This item shall consist of placing 100mm thk gravel fill in accordance with the specification and in conformity with the line, grades and dimensions shown on the plans or established by the engineer.

### **Plain and Reinforced Concrete Works**

#### *1. Structural Concrete (Class A) 28 days*

- All concrete surfaces including those indicated as cement plaster on drawings, in all interior walls and other concrete surfaces without specified finish, shall be done and applied in accordance with the following provisions.
- Immediately after the removal of forms, all projecting wires and bolts and other devices and for drying forms shall be cut off beneath the surface finishes. All hole voids and other defects shall be enlarged, roughened and required with a mortar of the same grade as that even surface similar concrete surfaces to the satisfaction of the engineer. Cracks shall be cut out and the sides dove tailed to a depth of at least 5cm and shall thereafter be filled with a mortar of the same grade as that in the original surface.

#### *2. Reinforcing Steel (Deformed, Grade 40)*

- This item covers the supply of labor, materials and equipment necessary for the installation of reinforcing steel bars (Grade 40) of structures. (Please refer to plans).
- Reinforcing bars shall be standard commercial, deformed steel such as NSC steel or other locally available equivalent. Steel bars shall be free from rust scales. Splices in bars shall be made at critical points of maximum stress.

#### *3. Formworks and False Works*

- This item of works includes the furnishing and installation of ¼” thk Marine plywood, 2”x3” coco lumber, tie wire and assorted nails.
- Construction of forms-construction from sufficiently tight to prevent leakage, securely brace and shore forms to prevent displacement and to safely support construction loads. Forms shall not be removed until concrete is set.

### **Finishing and Other Civil Works**

#### *1. Soil Poisoning*

- At the time soil poisoning is to be applied, the soil to be treated shall be in friable condition with low moisture content so as to allow uniform distribution of the toxicant agents. Toxicants

shall be applied at least 12 hours prior to placement of concrete which shall be in contact with treated materials.

- Treatment of the soil on the exterior sides of the foundation walls, grade beams and similar structures shall be done prior to final grading and planting or landscaping work to avoid disturbance of the toxicant barriers by such operations.

## *2. Catch Basin (Concrete)*

- This item shall consist of the construction or reconstruction of concrete catch basin in accordance with this Specification and in reasonably close conformity with the lines and grades shown on the Plans or as established by the Engineer.

## *3. Septic Tank*

- This item shall consist of the construction of septic tank in accordance with this Specifications and in conformity with the lines and grades shown on the Plans or as established by the Engineer.

## *4. Sewer Line Works*

- This item shall consist of furnishing all materials, equipment and labor for the complete sewerage system, is an underground pipe to transport sewage from the building (but not storm water) to a sewage treatment plant or disposal. Sewerage system should keep the system in good condition.
- Use sewer pipes, fittings, accessories, materials and all work obviously necessary for the proper functioning of all specifications or indicated in the drawings are included in this work.

## *5. Storm Drainage and Downspout*

- This item shall consist of furnishing all materials, equipment and labor for the complete installation of the storm drainage system to include all pipings, gutters, canal, catch basins, junction boxes, handholes, manholes, and other appurtenant structures, and sewerage system to include all sanitary sewer piping and septic vault where no public sewer exist, from the building to the point of discharge.

## *6. Plumbing Works*

- All works shall comply with the requirements and provisions of the National Plumbing Code of the Philippines.
- All fixtures shall be separately trapped. The trap shall be placed as near as possible to the fixtures
- No fixtures shall be double trapped.
- Horizontal waste lines shall be secured by hooks to the building frames or embedded in concrete whenever necessary.
- Horizontal waste line receiving the discharge from two or more fixtures shall be provided with the vents connected to the stack vents at least 1.20m from the floor level.
- Waterlines: potable waterline pipes shall be extended to all the fixture outlets and equipment from the gate valve near the riser.
- Provide and install complete floor drains shown on plans, brass or nickel plated 4" x 4" with the waste line, P-traps and vents.

- All pipes, fitting traps, fixtures, appurtenances and devices of plumbing and drainage system shall be inspected and approved by the architect/engineer to ensure compliance with the entire requirement of all codes and regulations referred in these specifications.
- Use sanitary pipes, fittings, accessories, materials and all work obviously necessary for the proper functioning of all specifications or indicated in the drawings are included in this work.

#### *7. Ceiling (4.5mm, Metal Frame, Fiber)*

- This item of work includes the installation of ceiling by using 4.5mm thk Fiber Cement Board and Metal framing.
- The ceiling must be installed 100mm from the bottom of the roof beam.
- All materials shall be of approved high quality. Please refer to the plan for the complete details.

#### *8. Steel Casement Window*

- This item of work includes the installation of Steel Casement Window.
- Windows shall be of size and type indicted in the schedule and as specified therein.

#### *9. Doors (Wooden Panel / Flush)*

- All doors specified in the plan must be manufactured in accordance to its sizes and by a manufacturer of good quality.
- Doors shall be extended through the full width of sills with ten on and mortise joints, glued well and planed. It shall hang straight and true to plump.

#### *10. Doors and Window Screen*

- All doors and window screen in the plan must be manufactured in accordance to its sizes and by a manufacturer of good quality.

#### *11. Waterproofing (Cement-Base)*

- Furnish all materials, equipment, labor, plant and other facilities to complete all waterproofing works as shown on the plans and hereinafter specified.
- All works included under this division shall be subject to the General Conditions accompanying these specifications. The contractor is required to refer especially thereto.
- All concrete surface shall be wood toweled smooth, firm, dry, clean and free of loose or foreign materials and without any projects, indentation and other imperfections.
- Apply 2 coats of cold applied waterproofing and vertical wall to a height of 10" (250mm) unless otherwise shown on the drawings the area to be waterproofed.
- Pour all holes of exterior concrete hollow blocks with class B concrete (coarse, aggregate shall be of such size so that no voids are formed)
- The installation of waterproofing shall be done by an approved roofing contractor by the manufacturer.
- No substitution of materials shall be made unless authorized in writing by the Architect prior to starting the work of waterproofing.

#### *12. Unglazed Tiles*

- The process of firing the tiles infuses the glaze into the top layer of the clay of the tile. But, if no coating is applied on the tile before firing it, then it will be called an unglazed tile.

#### *13. Glazed Tiles*

- Glazed tile shall be cushion-edge locally manufactured of the size or type and pattern shown on drawings and/or specified above. Use Granito or Mariwasa or another approved equivalent.

#### *14. Tactiles (PWD Ramp)*

- This item of work includes the installation of 20cm x 20cm tactiles for PWD Ramp.

#### *15. Cement Plaster / Floor Finish*

- Interior walls and other concrete surfaces without specified finish, shall be done and applied in accordance with the following provisions.
- Immediately after the removal of forms, all projecting wires and bolts and other devices used for trying forms shall be cut off at least ½ cm. beneath the surface finishes. All hole voids, depressions and other defects shall be enlarged, roughened and repaired with mortar of the same grade as that even surface similar surface all to the satisfaction of the Engineer. Cracks shall be cut out and the sides dove tailed to a depth of at least 5cm. and shall thereafter with a mortar of the same grade as that in the original surface.
- The concrete mixture to be used for all plastering works must be CLASS “A” MORTARS – 1:3 by volume.

#### *16. CHB Non-Load Bearing, 100mm / 150mm (Incl. RSB)*

- 100mm / 150mm thick for all interior walls unless otherwise indicated. Use 400 psi for non-load bearing blocks and 700 psi for load bearing blocks where required.

#### *17. Railings*

- This item shall consist of furnishing and constructing posts and guardrails of the types called for in the contract and in accordance with this Specification, at the locations, and in conformity with the lines and grades shown on the Plans, or as required by the Engineer.

#### *18. Carpentry Works*

- This item covers the supply of labor, materials and equipment necessary for the fabrication of White Board, Kitchen Cabinet, and Tables & Chair. All materials shall be of approved high quality. Please refer to the plan for the complete details.

#### *19. Painting Works*

- The works covered by this section of the specification consist in the proper preparation of surface, furnishing of labor, material tools appliances, scaffolding and other necessary equipment and in the performing of all operations in connection with painting, varnishing and wall paper works, complete in accordance with the color scheme and specified therein.
- This section of the specification covers the complete painting and finishing of the wood surface, the painting of plasters, concrete, unfinished metal and other surfaces throughout the interior and exterior of the building.
- All paint materials shall meet the requirements of the specifications by the standardization committee on supplies and shall be delivered on the job in the original container, with labels intact and seal unbroken.

- Tinting colors for all paint shall be colors in oil, ground and pure in linseed oil and of the grade obtainable.
- Color pigments shall be used to produce the exact shades of paint, which shall conform of the approved color scheme of the building.
- Except as otherwise noted, color of the priming coat shall be lighter than the body coat and color of the body lighter than the finish coat. The first coat shall be white.
- Wood surfaces shall be thoroughly cleaned, smoothly had pressed and well sand papered before any paint or finish is applied.
- Before applying paint to concrete, cement plaster or other cement finishes, etc. This surface must be allowed to dry thoroughly.

#### *20. Fabrication & Installation of Signages & Logo*

- The works includes fabrication of Signages and Logo using stainless steel.

#### *21. Handwash Area*

- This item shall consist of furnishing and construction of handwash area for in the contract and accordance with this Specifications, at the locations, and in conformity with the lines and grades shown on the Plans, or as required by the Engineer.

### **Electrical Works**

- The work to be undertaken here under includes the furnishing of all labor, materials, equipment, tools and supervision to the project and to complete the good working condition of the electrical system for the proposed building, refer to the plans specified:
  - Conduits, Boxes and Fittings
  - Wires and Wiring Devices
  - Panelboard with Main and Brain Breakers
  - Lighting Fixtures and Lamps
  - Grounding System
- All works hereunder shall comply with the requirements of the latest edition of the Philippine Electrical Code of the Philippines and the Rules and Regulations of the Local Electric Company.

### **Other General Requirements**

#### *1. Provision of Bunkhouse (Rental Basis) & Other Facilities*

- This item includes the construction the temporary facilities for the engineer and temporary bunkhouse for rental basis including the power and water supply for the storage of the materials / equipment needed for the whole duration of the project.

#### *2. Occupational Construction Safety and Health*

- The contractor needs to establish safety goals and objectives develop and implement a written Safety and Health program. The contractor also needs to provide a Part-Time Safety Practitioner and First Aider who undergone training at DOLE/ Red cross respectively.

### *3. Project Billboard/ Signboard*

- Fabrication & installation of plywood size (1.2m x 2.4m) standard billboard with coco lumber frame.

### *4. Rehabilitation / Improvement of Quinastillojan Elementary School, Quinastillojan, Tabaco City*

#### **Earthworks**

##### *1. Clearing and Grubbing*

- This item of work consists of clearing, grubbing, removing and disposing all vegetation and debris as designated in the Contract, except those objects that are designated to remain in place or are to be removed in consonance with other provisions of this Specification. The work shall also include the preservation from injury or defacement of all objects designated to remain.
- The engineer will establish the limits of work and designate all trees, shrubs, plants and other things to remain. The Contractor shall preserve all objects designated to remain.

##### *2. Structure Excavation*

- This item of work includes excavation for footing, tie beam, and in conformity with the lines, grades and dimensions shown on the Plans or established by the Engineer.
- All suitable materials removed from the excavation shall be used in the formation of the embankment, subgrade, shoulders, slopes, bedding, and backfill for structures, and for other purposes shown on the Plans or as directed.
- The Engineer will designate as unsuitable those soils that cannot be properly compacted in embankments. Only approved materials shall be used in the construction of embankments and backfills. Materials encountered in the excavation and determined by the Engineer as suitable for topping, road finishing, slope protection, or other purposes shall be conserved and utilized as directed by the Engineer. Borrow materials shall not be placed until after the readily accessible materials from roadway excavation has been placed in the fill, unless otherwise permitted or directed by the Engineer.

##### *4. Embankment (From Borrow)*

- This item of work includes embankment from borrow with a volume of 23.63 cu. m. and prior to construction of embankment, all necessary clearing and grubbing in that area shall have been performed in conformity with Item 100, Clearing and Grubbing.
- Embankment construction shall consist of constructing roadway embankments, including preparation of the areas upon which they are to be placed; the construction of dikes within or adjacent to the roadway; the placing and compacting of approved material within roadway areas where unsuitable material has been removed; and the placing and compacting of embankment material in holes, pits, and other depressions within the roadway area.
- Embankments and backfills shall contain no muck, peat, sod, roots or other deleterious matter. Rocks, broken concrete or other solid, bulky materials shall not be placed in embankment areas where piling is to be placed or driven.

##### *5. Gravel Fill*

- This item shall consist of placing 100mm thk gravel fill in accordance with the specification and in conformity with the line, grades and dimensions shown on the plans or established by the engineer.

## **Plain and Reinforced Concrete Works**

### *1. Structural Concrete (Class A) 28 days*

- All concrete surfaces including those indicated as cement plaster on drawings, in all interior walls and other concrete surfaces without specified finish, shall be done and applied in accordance with the following provisions.
- Immediately after the removal of forms, all projecting wires and bolts and other devices and for drying forms shall be cut off beneath the surface finishes. All hole voids and other defects shall be enlarged, roughened and required with a mortar of the same grade as that even surface similar concrete surfaces to the satisfaction of the engineer. Cracks shall be cut out and the sides dove tailed to a depth of at least 5cm and shall thereafter be filled with a mortar of the same grade as that in the original surface.

### *2. Reinforcing Steel (Deformed, Grade 40)*

- This item covers the supply of labor, materials and equipment necessary for the installation of reinforcing steel bars (Grade 40) of structures. (Please refer to plans).
- Reinforcing bars shall be standard commercial, deformed steel such as NSC steel or other locally available equivalent. Steel bars shall be free from rust scales. Splices in bars shall be made at critical points of maximum stress.

### *3. Formworks and False Works*

- This item of works includes the furnishing and installation of ¼" thk Marine plywood, 2"x3" coco lumber, tie wire and assorted nails.
- Construction of forms-construction from sufficiently tight to prevent leakage, securely brace and shore forms to prevent displacement and to safely support construction loads. Forms shall not be removed until concrete is set.

## **Finishing and Other Civil Works**

### *1. Catch Basin (Concrete)*

- This item shall consist of the construction or reconstruction of concrete catch basin in accordance with this Specification and in reasonably close conformity with the lines and grades shown on the Plans or as established by the Engineer.

### *2. Sewer Line Works*

- This item shall consist of furnishing all materials, equipment and labor for the complete sewerage system, is an underground pipe to transport sewage from the building (but not storm water) to a sewage treatment plant or disposal. Sewerage system should keep the system in good condition.
- Use sewer pipes, fittings, accessories, materials and all work obviously necessary for the proper functioning of all specifications or indicated in the drawings are included in this work.

### *3. Storm Drainage and Downspout*

- This item shall consist of furnishing all materials, equipment and labor for the complete installation of the storm drainage system to include all pipings, gutters, canal, catch basins, junction boxes, handholes, manholes, and other appurtenant structures, and sewerage system to include all sanitary sewer piping and septic vault where no public sewer exist, from the building to the point of discharge.

#### *4. Septic Vault, Concrete / CHB*

- This item shall consist of furnishing all materials, equipment and labor for the complete septic vault with 3 chambers and wall should be at least 80 to 100mm thick, though they can alternatively be construction of CHB. The tank must be completely watertight, and that is what matters. Concrete or other materials with adhesion properties should be used to place and seal the inlet and output pipes.

#### *5. Plumbing Fixtures / Cold Water Lines*

- All works shall comply with the requirements and provisions of the National Plumbing Code of the Philippines.
- All fixtures shall be separately trapped. The trap shall be placed as near as possible to the fixtures
- No fixtures shall be double trapped.
- Horizontal waste lines shall be secured by hooks to the building frames or embedded in concrete whenever necessary.
- Horizontal waste line receiving the discharge from two or more fixtures shall be provided with the vents connected to the stack vents at least 1.20m from the floor level.
- Waterlines: potable waterline pipes shall be extended to all the fixture outlets and equipment from the gate valve near the riser.
- Provide and install complete floor drains shown on plans, brass or nickel plated 4" x 4" with the waste line, P-traps and vents.
- All pipes, fitting traps, fixtures, appurtenances and devices of plumbing and drainage system shall be inspected and approved by the architect/engineer to ensure compliance with the entire requirement of all codes and regulations referred in these specifications.
- Use sanitary pipes, fittings, accessories, materials and all work obviously necessary for the proper functioning of all specifications or indicated in the drawings are included in this work.

#### *6. Ceiling (4.5mm, Metal Frame, Fiber Cement Board)*

- This item of work includes the installation of ceiling by using 4.5mm thk Fiber Cement Board and Metal framing.
- The ceiling must be installed 100mm from the bottom of the roof beam.
- All materials shall be of approved high quality. Please refer to the plan for the complete details.

#### *7. Jalousie Windows, Wood*

- This item of work includes the installation of Wooden Jalousie.
- Windows shall be of size and type indicted in the schedule and as specified therein.

#### *8. Doors (Wooden Panel / Flush)*

- All doors specified in the plan must be manufactured in accordance to its sizes and by a manufacturer of good quality.
- Doors shall be extended through the full width of sills with ten on and mortise joints, glued well and planed. It shall hang straight and true to plump.

### *9. Roofing Works*

- This item of work includes the installation of corrugated pre-painted metal sheets above 0.427mm.
- Laying should start from the opposite end direction of the prevailing monsoon wind.
- Apply sufficient amount of roof sealant to ensure leak free roofing.
- All works shall be done in such a manner that will ensure a strong and lasting leak proof installation.

### *10. Waterproofing (Cement-Base)*

- Furnish all materials, equipment, labor, plant and other facilities to complete all waterproofing works as shown on the plans and hereinafter specified.
- All works included under this division shall be subject to the General Conditions accompanying these specifications. The contractor is required to refer especially thereto.
- All concrete surface shall be wood troweled smooth, firm, dry, clean and free of loose or foreign materials and without any projects, indentation and other imperfections.
- Apply 2 coats of cold applied waterproofing and vertical wall to a height of 10" (250mm) unless otherwise shown on the drawings the area to be waterproofed.
- Pour all holes of exterior concrete hollow blocks with class B concrete (coarse, aggregate shall be of such size so that no voids are formed)
- The installation of waterproofing shall be done by an approved roofing contractor by the manufacturer.
- No substitution of materials shall be made unless authorized in writing by the Architect prior to starting the work of waterproofing.

### *11. Cement Plaster/ Floor Finish*

- All concrete surfaces including those indicated as cement plaster/floor finish on plan, in all interior walls and other concrete surfaces without specified finish, shall be done and applied in accordance with the following provisions.
- Immediately after the removal of forms, all projecting wires and bolts and other devices used for trying forms shall be cut off at least ½ cm. beneath the surface finishes. All holes voids, depressions and other defects shall be enlarged, roughened and repaired with mortar of the same grade as that even surface similar surface all to the satisfaction of the Engineer. Cracks shall be cut out and the sides dove tailed to a depth of at least 5cm. and shall thereafter with a mortar of the same grade as that in the original surface.
- The concrete mixture to be used for all plastering works must be CLASS "A" MORTARS – 1:3 by volume.

### *12. Painting Works*

- The works covered by this section of the specification consist in the proper preparation of surface, furnishing of labor, material tools appliances, scaffolding and other necessary equipment and in the performing of all operations in connection with painting, varnishing and wall paper works, complete in accordance with the color scheme and specified therein.

- This section of the specification covers the complete painting and finishing of the wood surface, the painting of plasters, concrete, unfinished metal and other surfaces throughout the interior and exterior of the building.
- All paint materials shall meet the requirements of the specifications by the standardization committee on supplies and shall be delivered on the job in the original container, with labels intact and seal unbroken.
- Tinting colors for all paint shall be colors in oil, ground and pure in linseed oil and of the grade obtainable.
- Color pigments shall be used to produce the exact shades of paint, which shall conform of the approved color scheme of the building.
- Except as otherwise noted, color of the priming coat shall be lighter than the body coat and color of the body lighter than the finish coat. The first coat shall be white.
- Wood surfaces shall be thoroughly cleaned, smoothly had pressed and well sand papered before any paint or finish is applied.
- Before applying paint to concrete, cement plaster or other cement finishes, etc. This surface must be allowed to dry thoroughly.

### *13. Structural Steel*

- This item of work includes the fabrication and installation of trusses and purlins
- All works shall be done in such a manner that will ensure strong and well – spaced installation.

### *14. CHB Non-Load Bearing, 100mm / 150mm (Incl. RSB)*

- 100mm / 150mm thick for all interior walls unless otherwise indicated. Use 400 psi for non-load bearing blocks and 700 psi for load bearing blocks where required.

### **Electrical Works**

- The work to be undertaken here under includes the furnishing of all labor, materials, equipment, tools and supervision to the project and to complete the good working condition of the electrical system for the proposed building, refer to the plans specified:
  - Conduits, Boxes and Fittings (Conduit Works / Conduit Rough-in)
  - Wires and Wiring Devices
  - Panel board with Main and Brain Breakers
  - Lighting Fixtures and Lamps
- All works hereunder shall comply with the requirements of the latest edition of the Philippine Electrical Code of the Philippines and the Rules and Regulations of the Local Electric Company.

### **Other General Requirements**

#### *1. Provision of Bunkhouse (Rental Basis) & Other Facilities*

- This item includes the construction the temporary facilities for the engineer and temporary bunkhouse for rental basis including the power and water supply for the storage of the materials / equipment needed for the whole duration of the project.

## *2. Occupational Construction Safety and Health*

- The contractor needs to establish safety goals and objectives develop and implement a written Safety and Health program. The contractor also needs to provide a Part-Time Safety Practitioner and First Aider who undergone training at DOLE/ Red cross respectively.

## *3. Project Billboard/ Signboard*

- Fabrication & installation of plywood size (1.2m x 2.4m) standard billboard with coco lumber frame.

## *5. Rehabilitation / Improvement of San Antonio Elementary School, Brgy. San Antonio, Tabaco City*

### **Earthworks**

#### *1. Clearing and Grubbing*

- This item of work consists of clearing, grubbing, removing and disposing all vegetation and debris as designated in the Contract, except those objects that are designated to remain in place or are to be removed in consonance with other provisions of this Specification. The work shall also include the preservation from injury or defacement of all objects designated to remain.
- The engineer will establish the limits of work and designate all trees, shrubs, plants and other things to remain. The Contractor shall preserve all objects designated to remain.

#### *2. Structure Excavation (Common Soil)*

- This item of work includes excavation for footing, tie beam, and in conformity with the lines, grades and dimensions shown on the Plans or established by the Engineer.
- All suitable materials removed from the excavation shall be used in the formation of the embankment, subgrade, shoulders, slopes, bedding, and backfill for structures, and for other purposes shown on the Plans or as directed.
- The Engineer will designate as unsuitable those soils that cannot be properly compacted in embankments. Only approved materials shall be used in the construction of embankments and backfills. Materials encountered in the excavation and determined by the Engineer as suitable for topping, road finishing, slope protection, or other purposes shall be conserved and utilized as directed by the Engineer. Borrow materials shall not be placed until after the readily accessible materials from roadway excavation has been placed in the fill, unless otherwise permitted or directed by the Engineer.

#### *3. Embankment (From Structure Excavation)*

- This item of work includes embankment from structure excavation with a volume of 95.31 cu. m. and prior to construction of embankment, all necessary clearing and grubbing in that area shall have been performed in conformity with Item 100, Clearing and Grubbing.
- Embankment construction shall consist of constructing roadway embankments, including preparation of the areas upon which they are to be placed; the construction of dikes within or adjacent to the roadway; the placing and compacting of approved material within roadway areas where unsuitable material has been removed; and the placing and compacting of embankment material in holes, pits, and other depressions within the roadway area.
- Embankments and backfills shall contain no muck, peat, sod, roots or other deleterious matter. Rocks, broken concrete or other solid, bulky materials shall not be placed in embankment areas where piling is to be placed or driven.

#### *4. Embankment (From Borrow)*

- This item of work includes embankment from borrow with a volume of 113.85 cu. m. and prior to construction of embankment, all necessary clearing and grubbing in that area shall have been performed in conformity with Item 100, Clearing and Grubbing.
- Embankment construction shall consist of constructing roadway embankments, including preparation of the areas upon which they are to be placed; the construction of dikes within or adjacent to the roadway; the placing and compacting of approved material within roadway areas where unsuitable material has been removed; and the placing and compacting of embankment material in holes, pits, and other depressions within the roadway area.
- Embankments and backfills shall contain no muck, peat, sod, roots or other deleterious matter. Rocks, broken concrete or other solid, bulky materials shall not be placed in embankment areas where piling is to be placed or driven.

#### *5. Gravel Fill*

- This item shall consist of placing 100mm thk gravel fill in accordance with the specification and in conformity with the line, grades and dimensions shown on the plans or established by the engineer.

### **Plain and Reinforced Concrete Works**

#### *1. Structural Concrete (Class A) 28 days*

- All concrete surfaces including those indicated as cement plaster on drawings, in all interior walls and other concrete surfaces without specified finish, shall be done and applied in accordance with the following provisions.
- Immediately after the removal of forms, all projecting wires and bolts and other devices and for drying forms shall be cut off beneath the surface finishes. All hole voids and other defects shall be enlarged, roughened and required with a mortar of the same grade as that even surface similar concrete surfaces to the satisfaction of the engineer. Cracks shall be cut out and the sides dove tailed to a depth of at least 5cm and shall thereafter be filled with a mortar of the same grade as that in the original surface.

#### *2. Reinforcing Steel (Deformed, Grade 40)*

- This item covers the supply of labor, materials and equipment necessary for the installation of reinforcing steel bars (Grade 40) of structures. (Please refer to plans).
- Reinforcing bars shall be standard commercial, deformed steel such as NSC steel or other locally available equivalent. Steel bars shall be free from rust scales. Splices in bars shall be made at critical points of maximum stress.

#### *3. Formworks and False Works*

- This item of works includes the furnishing and installation of ¼" thk Marine plywood, 2"x3" coco lumber, tie wire and assorted nails.
- Construction of forms-construction from sufficiently tight to prevent leakage, securely brace and shore forms to prevent displacement and to safely support construction loads. Forms shall not be removed until concrete is set.

## **Finishing and Other Civil Works**

### *1. Catch Basin (Concrete)*

- This item shall consist of the construction or reconstruction of concrete catch basin in accordance with this Specification and in reasonably close conformity with the lines and grades shown on the Plans or as established by the Engineer.

### *2. Sewer Line Works*

- This item shall consist of furnishing all materials, equipment and labor for the complete sewerage system, is an underground pipe to transport sewage from the building (but not storm water) to a sewage treatment plant or disposal. Sewerage system should keep the system in good condition.
- Use sewer pipes, fittings, accessories, materials and all work obviously necessary for the proper functioning of all specifications or indicated in the drawings are included in this work.

### *3. Storm Drainage and Downspout*

- This item shall consist of furnishing all materials, equipment and labor for the complete installation of the storm drainage system to include all piping, gutters, canal, catch basins, junction boxes, handholes, manholes, and other appurtenant structures, and sewerage system to include all sanitary sewer piping and septic vault where no public sewer exist, from the building to the point of discharge.

### *4. Septic Vault*

- This item shall consist of furnishing all materials, equipment and labor for the complete septic vault with 3 chambers and wall should be at least 80 to 100mm thick, though they can alternatively be construction of CHB. The tank must be completely watertight, and that is what matters. Concrete or other materials with adhesion properties should be used to place and seal the inlet and output pipes.

### *5. Plumbing Fixtures / Cold Water Lines*

- All works shall comply with the requirements and provisions of the National Plumbing Code of the Philippines.
- All fixtures shall be separately trapped. The trap shall be placed as near as possible to the fixtures
- No fixtures shall be double trapped.
- Horizontal waste lines shall be secured by hooks to the building frames or embedded in concrete whenever necessary.
- Horizontal waste line receiving the discharge from two or more fixtures shall be provided with the vents connected to the stack vents at least 1.20m from the floor level.
- Waterlines: potable waterline pipes shall be extended to all the fixture outlets and equipment from the gate valve near the riser.
- Provide and install complete floor drains shown on plans, brass or nickel plated 4" x 4" with the waste line, P-traps and vents.
- All pipes, fitting traps, fixtures, appurtenances and devices of plumbing and drainage system shall be inspected and approved by the architect/engineer to ensure compliance with the entire requirement of all codes and regulations referred in these specifications.

- Use sanitary pipes, fittings, accessories, materials and all work obviously necessary for the proper functioning of all specifications or indicated in the drawings are included in this work.

#### 6. *Ceiling (4.5mm, Wood Frame, Marine Plywood)*

- This item of work includes the installation of ceiling by using 4.5mm thk Marine Plywood and Wood framing.
- The ceiling must be installed 100mm from the bottom of the roof beam.
- All materials shall be of approved high quality. Please refer to the plan for the complete details.

#### 7. *Doors & Windows*

- All doors specified in the plan must be manufactured in accordance to its sizes and by a manufacturer of good quality.
- Doors shall be extended through the full width of sills with ten on and mortise joints, glued well and planed. It shall hang straight and true to plump.
- Windows shall be of size and type indicted in the schedule and as specified therein.

#### 8. *Waterproofing (Cement-Base)*

- Furnish all materials, equipment, labor, plant and other facilities to complete all waterproofing works as shown on the plans and hereinafter specified.
- All works included under this division shall be subject to the General Conditions accompanying these specifications. The contractor is required to refer especially thereto.
- All concrete surface shall be wood toweled smooth, firm, dry, clean and free of loose or foreign materials and without any projects, indentation and other imperfections.
- Apply 2 coats of cold applied waterproofing and vertical wall to a height of 10" (250mm) unless otherwise shown on the drawings the area to be waterproofed.
- Pour all holes of exterior concrete hollow blocks with class B concrete (coarse, aggregate shall be of such size so that no voids are formed)
- The installation of waterproofing shall be done by an approved roofing contractor by the manufacturer.
- No substitution of materials shall be made unless authorized in writing by the Architect prior to starting the work of waterproofing.

#### 9. *Glazed Tiles*

- Glazed tile shall be cushion-edge locally manufactured of the size or type and pattern shown on drawings and/or specified above. Use Granito or Mariwasa or another approved equivalent.

#### 10. *Unglazed Tiles*

- The process of firing the tiles infuses the glaze into the top layer of the clay of the tile. But, if no coating is applied on the tile before firing it, then it will be called an unglazed tile.

#### 11. *Cement Plaster / Floor Finish*

- Interior walls and other concrete surfaces without specified finish, shall be done and applied in accordance with the following provisions.

- Immediately after the removal of forms, all projecting wires and bolts and other devices used for trying forms shall be cut off at least ½ cm. beneath the surface finishes. All hole voids, depressions and other defects shall be enlarged, roughened and repaired with mortar of the same grade as that even surface similar surface all to the satisfaction of the Engineer. Cracks shall be cut out and the sides dove tailed to a depth of at least 5cm. and shall thereafter with a mortar of the same grade as that in the original surface.
- The concrete mixture to be used for all plastering works must be CLASS “A” MORTARS – 1:3 by volume.

### *12. Painting Works*

- The works covered by this section of the specification consist in the proper preparation of surface, furnishing of labor, material tools appliances, scaffolding and other necessary equipment and in the performing of all operations in connection with painting, varnishing and wall paper works, complete in accordance with the color scheme and specified therein.
- This section of the specification covers the complete painting and finishing of the wood surface, the painting of plasters, concrete, unfinished metal and other surfaces throughout the interior and exterior of the building.
- All paint materials shall meet the requirements of the specifications by the standardization committee on supplies and shall be delivered on the job in the original container, with labels intact and seal unbroken.
- Tinting colors for all paint shall be colors in oil, ground and pure in linseed oil and of the grade obtainable.
- Color pigments shall be used to produce the exact shades of paint, which shall conform of the approved color scheme of the building.
- Except as otherwise noted, color of the priming coat shall be lighter than the body coat and color of the body lighter than the finish coat. The first coat shall be white.
- Wood surfaces shall be thoroughly cleaned, smoothly had pressed and well sand papered before any paint or finish is applied.
- Before applying paint to concrete, cement plaster or other cement finishes, etc. This surface must be allowed to dry thoroughly.

### *13. CHB Non-Load Bearing, 100mm / 150mm (Incl. RSB)*

- 100mm / 150mm thick for all interior walls unless otherwise indicated. Use 400 psi for non-load bearing blocks and 700 psi for load bearing blocks where required.

### *17. Railings*

- This item shall consist of furnishing and constructing posts and guardrails of the types called for in the contract and in accordance with this Specification, at the locations, and in conformity with the lines and grades shown on the Plans, or as required by the Engineer.

### **Electrical Works**

- The work to be undertaken here under includes the furnishing of all labor, materials, equipment, tools and supervision to the project and to complete the good working condition of the electrical system for the proposed building, refer to the plans specified:  
- Conduits, Boxes and Fittings (Conduit Works/ Conduit Rough-in)

- Wires and Wiring Devices
- Panelboard with Main and Brain Breakers
- Lighting Fixtures and Lamps
- All works hereunder shall comply with the requirements of the latest edition of the Philippine Electrical Code of the Philippines and the Rules and Regulations of the Local Electric Company.

### **Other General Requirements**

#### *1. Provision of Bunkhouse (Rental Basis) & Other Facilities*

- This item includes the construction the temporary facilities for the engineer and temporary bunkhouse for rental basis including the power and water supply for the storage of the materials / equipment needed for the whole duration of the project.

#### *2. Occupational Construction Safety and Health*

- The contractor needs to establish safety goals and objectives develop and implement a written Safety and Health program. The contractor also needs to provide a Part-Time Safety Practitioner and First Aider who undergone training at DOLE/ Red cross respectively.

#### *3. Project Billboard/ Signboard*

- Fabrication & installation of plywood size (1.2m x 2.4m) standard billboard with coco lumber frame.

### ***6. Rehabilitation / Improvement of Fatima Elementary School, Brgy. Fatima, Tabaco City***

#### ***Demolition of Existing Structures***

This item of work includes cutting of concrete with the use of concrete cutter/saw and Jackhammer with generator by common laborers.

### **Earthworks**

#### *1. Structure Excavation (Common Soil)*

- This item of work includes excavation for footing, tie beam, and in conformity with the lines, grades and dimensions shown on the Plans or established by the Engineer.
- All suitable materials removed from the excavation shall be used in the formation of the embankment, subgrade, shoulders, slopes, bedding, and backfill for structures, and for other purposes shown on the Plans or as directed.
- The Engineer will designate as unsuitable those soils that cannot be properly compacted in embankments. Only approved materials shall be used in the construction of embankments and backfills. Materials encountered in the excavation and determined by the Engineer as suitable for topping, road finishing, slope protection, or other purposes shall be conserved and utilized as directed by the Engineer. Borrow materials shall not be placed until after the readily accessible materials from roadway excavation has been placed in the fill, unless otherwise permitted or directed by the Engineer.

#### *2. Embankment (From Structure Excavation)*

- This item of work includes embankment from structure excavation with a volume of 45.35 cu. m. and prior to construction of embankment, all necessary clearing and grubbing in that area shall have been performed in conformity with Item 100, Clearing and Grubbing.
- Embankment construction shall consist of constructing roadway embankments, including preparation of the areas upon which they are to be placed; the construction of dikes within or adjacent to the roadway; the placing and compacting of approved material within roadway areas where unsuitable material has been removed; and the placing and compacting of embankment material in holes, pits, and other depressions within the roadway area.
- Embankments and backfills shall contain no muck, peat, sod, roots or other deleterious matter. Rocks, broken concrete or other solid, bulky materials shall not be placed in embankment areas where piling is to be placed or driven.

### *3. Embankment (From Borrow)*

- This item of work includes embankment from borrow with a volume of 29.37 cu. m. and prior to construction of embankment, all necessary clearing and grubbing in that area shall have been performed in conformity with Item 100, Clearing and Grubbing.
- Embankment construction shall consist of constructing roadway embankments, including preparation of the areas upon which they are to be placed; the construction of dikes within or adjacent to the roadway; the placing and compacting of approved material within roadway areas where unsuitable material has been removed; and the placing and compacting of embankment material in holes, pits, and other depressions within the roadway area.
- Embankments and backfills shall contain no muck, peat, sod, roots or other deleterious matter. Rocks, broken concrete or other solid, bulky materials shall not be placed in embankment areas where piling is to be placed or driven.

### *4. Gravel Bedding*

- This item shall consist of placing 100mm thk gravel fill in accordance with the specification and in conformity with the line, grades and dimensions shown on the plans or established by the engineer.

### **Structural Concrete (Class A) 28 days**

- All concrete surfaces including those indicated as cement plaster on drawings, in all interior walls and other concrete surfaces without specified finish, shall be done and applied in accordance with the following provisions.
- Immediately after the removal of forms, all projecting wires and bolts and other devices and for drying forms shall be cut off beneath the surface finishes. All holes voids and other defects shall be enlarged, roughened and required with a mortar of the same grade as that even surface similar concrete surfaces to the satisfaction of the engineer. Cracks shall be cut out and the sides dove tailed to a depth of at least 5cm and shall thereafter be filled with a mortar of the same grade as that in the original surface.

### **Reinforcing Steel (Deformed, Grade 40)**

- This item covers the supply of labor, materials and equipment necessary for the installation of reinforcing steel bars (Grade 40) of structures. (Please refer to plans).
- Reinforcing bars shall be standard commercial, deformed steel such as NSC steel or other locally available equivalent. Steel bars shall be free from rust scales. Splices in bars shall be made at critical points of maximum stress.

### **Formworks and False Works**

- This item of works includes the furnishing and installation of ¼”thk Marine plywood, 2”x3” coco lumber, tie wire and assorted nails.
- Construction of forms-construction from sufficiently tight to prevent leakage, securely brace and shore forms to prevent displacement and to safely support construction loads. Forms shall not be removed until concrete is set.

### **Masonry Works**

- This item of works includes the furnishing and installation of 6” and 4” concrete hollow blocks for exterior wall, reinforced with 10mm diameter rebars spaced at 600mm on center both ways. CHB shall be filled with mortar and ready to accept plaster finish.
- All masonry works shall be cement plastered smooth finish for the interior of the wall, and rough finished for the exterior.
- Forms shall result in a final structure that conforms to the shape, line and dimensions of the member as required by the design drawing and specifications. Forms shall be substantial and sufficiently tight to prevent leakage of the mortar. Forms and their support shall be designed so as not to damage previously placed structure.

### **Cement Plaster/ Floor Finish**

- All concrete surfaces including those indicated as cement plaster/floor finish on plan, in all interior walls and other concrete surfaces without specified finish, shall be done and applied in accordance with the following provisions.
- Immediately after the removal of forms, all projecting wires and bolts and other devices used for trying forms shall be cut off at least ½ cm. beneath the surface finishes. All holes voids, depressions and other defects shall be enlarged, roughened and repaired with mortar of the same grade as that even surface similar surface all to the satisfaction of the Engineer. Cracks shall be cut out and the sides dove tailed to a depth of at least 5cm. and shall thereafter with a mortar of the same grade as that in the original surface.
- The concrete mixture to be used for all plastering works must be CLASS “A” MORTARS – 1:3 by volume.

### **Doors & Windows**

- All doors specified in the plan must be manufactured in accordance to its sizes and by a manufacturer of good quality.
- Doors shall be extended through the full width of sills with ten on and mortise joints, glued well and planed. It shall hang straight and true to plump.
- Windows shall be of size and type indicted in the schedule and as specified therein.

### **Electrical Works**

- The work to be undertaken here under includes the furnishing of all labor, materials, equipment, tools and supervision to the project and to complete the good working condition of the electrical system for the proposed building
- All works hereunder shall comply with the requirements of the latest edition of the Philippine Electrical Code of the Philippines and the Rules and Regulations of the Local Electric Company.

## **Plumbing Works**

- All works shall comply with the requirements and provisions of the National Plumbing Code of the Philippines.
- All fixtures shall be separately trapped. The trap shall be placed as near as possible to the fixtures
- No fixtures shall be double trapped.
- Horizontal waste lines shall be secured by hooks to the building frames or embedded in concrete whenever necessary.
- Horizontal waste line receiving the discharge from two or more fixtures shall be provided with the vents connected to the stack vents at least 1.20m from the floor level.
- Waterlines: potable waterline pipes shall be extended to all the fixture outlets and equipment from the gate valve near the riser.
- Provide and install complete floor drains shown on plans, brass or nickel plated 4" x 4" with the waste line, P-traps and vents.
- All pipes, fitting traps, fixtures, appurtenances and devices of plumbing and drainage system shall be inspected and approved by the architect/engineer to ensure compliance with the entire requirement of all codes and regulations referred in these specifications.
- Use sanitary pipes, fittings, accessories, materials and all work obviously necessary for the proper functioning of all specifications or indicated in the drawings are included in this work.

## **Painting Works**

- The works covered by this section of the specification consist in the proper preparation of surface, furnishing of labor, material tools appliances, scaffolding and other necessary equipment and in the performing of all operations in connection with painting, varnishing and wall paper works, complete in accordance with the color scheme and specified therein.
- This section of the specification covers the complete painting and finishing of the wood surface, the painting of plasters, concrete, unfinished metal and other surfaces throughout the interior and exterior of the building.
- All paint materials shall meet the requirements of the specifications by the standardization committee on supplies and shall be delivered on the job in the original container, with labels intact and seal unbroken.
- Tinting colors for all paint shall be colors in oil, ground and pure in linseed oil and of the grade obtainable.
- Color pigments shall be used to produce the exact shades of paint, which shall conform of the approved color scheme of the building.
- Except as otherwise noted, color of the priming coat shall be lighter than the body coat and color of the body lighter than the finish coat. The first coat shall be white.
- Wood surfaces shall be thoroughly cleaned, smoothly had pressed and well sand papered before any paint or finish is applied.
- Before applying paint to concrete, cement plaster or other cement finishes, etc. This surface must be allowed to dry thoroughly.

### **Waterproofing (Cement-based)**

- Furnish all materials, equipment, labor, plant and other facilities to complete all waterproofing works as shown on the plans and hereinafter specified.
- All works included under this division shall be subject to the General Conditions accompanying these specifications. The contractor is required to refer especially thereto.
- All concrete surface shall be wood troweled smooth, firm, dry, clean and free of loose or foreign materials and without any projects, indentation and other imperfections.
- Apply 2 coats of cold applied waterproofing and vertical wall to a height of 10" (250mm) unless otherwise shown on the drawings the area to be waterproofed.
- Pour all holes of exterior concrete hollow blocks with class B concrete (coarse, aggregate shall be of such size so that no voids are formed)
- The installation of waterproofing shall be done by an approved roofing contractor by the manufacturer.
- No substitution of materials shall be made unless authorized in writing by the Architect prior to starting the work of waterproofing.

### **Removal of Unsuitable Materials**

This item of work consists of removing silt or any unsuitable materials or soil layers using stake truck.

### **Provision of Bunkhouse (Rental Basis) & Other Facilities**

This item includes the construction the temporary facilities for the engineer and temporary bunkhouse for rental basis including the power and water supply for the storage of the materials / equipment needed for the whole duration of the project.

### **Occupational Construction Safety and Health**

The contractor needs to establish safety goals and objectives develop and implement a written Safety and Health program. The contractor also needs to provide a Part-Time Safety Practitioner and First Aider who undergone training at DOLE/ Red cross respectively.

### **Project Billboard/ Signboard**

Fabrication & installation of plywood size (1.2m x 2.4m) standard billboard with coco lumber frame.

## ***7. Construction of Temporary Learning Space, Various Schools, Tabaco City***

### **A. MAIN/UPLAND BARANGAY SCHOOLS**

#### **Earthworks**

##### *1. Clearing and Grubbing*

- This item of work consists of clearing, grubbing, removing and disposing all vegetation and debris as designated in the Contract, except those objects that are designated to remain in place or are to be removed in consonance with other provisions of this Specification. The work shall also include the preservation from injury or defacement of all objects designated to remain.
- The engineer will establish the limits of work and designate all trees, shrubs, plants and other things to remain. The Contractor shall preserve all objects designated to remain.

## 2. Structure Excavation

- This item of work includes excavation for footing, tie beam, and in conformity with the lines, grades and dimensions shown on the Plans or established by the Engineer.
- All suitable materials removed from the excavation shall be used in the formation of the embankment, subgrade, shoulders, slopes, bedding, and backfill for structures, and for other purposes shown on the Plans or as directed.
- The Engineer will designate as unsuitable those soils that cannot be properly compacted in embankments. Only approved materials shall be used in the construction of embankments and backfills. Materials encountered in the excavation and determined by the Engineer as suitable for topping, road finishing, slope protection, or other purposes shall be conserved and utilized as directed by the Engineer. Borrow materials shall not be placed until after the readily accessible materials from roadway excavation has been placed in the fill, unless otherwise permitted or directed by the Engineer.

## Plain and Reinforced Concrete Works

### 1. Structural Concrete (Class A) 28 days

- All concrete surfaces including those indicated as cement plaster on drawings, in all interior walls and other concrete surfaces without specified finish, shall be done and applied in accordance with the following provisions.
- Immediately after the removal of forms, all projecting wires and bolts and other devices and for drying forms shall be cut off beneath the surface finishes. All hole voids and other defects shall be enlarged, roughened and required with a mortar of the same grade as that even surface similar concrete surfaces to the satisfaction of the engineer. Cracks shall be cut out and the sides dove tailed to a depth of at least 5cm and shall thereafter be filled with a mortar of the same grade as that in the original surface.

### 2. Reinforcing Steel (Deformed, Grade 40)

- This item covers the supply of labor, materials and equipment necessary for the installation of reinforcing steel bars (Grade 40) of structures. (Please refer to plans).
- Reinforcing bars shall be standard commercial, deformed steel such as NSC steel or other locally available equivalent. Steel bars shall be free from rust scales. Splices in bars shall be made at critical points of maximum stress.

## Finishing and Other Civil Works

### 1. Carpentry Works

- This item covers the supply of labor, materials and equipment necessary for the fabrication of White Board, Kitchen Cabinet, and Tables & Chair. All materials shall be of approved high quality. Please refer to the plan for the complete details.

### 2. Roofing Works

- This item of work includes the installation of corrugated pre-painted metal sheets above 0.427mm.
- Laying should start from the opposite end direction of the prevailing monsoon wind.
- Apply sufficient amount of roof sealant to ensure leak free roofing.
- All works shall be done in such a manner that will ensure a strong and lasting leak proof installation.

### *3. Cement Plaster/ Floor Finish*

- All concrete surfaces including those indicated as cement plaster/floor finish on plan, in all interior walls and other concrete surfaces without specified finish, shall be done and applied in accordance with the following provisions.
- Immediately after the removal of forms, all projecting wires and bolts and other devices used for trying forms shall be cut off at least ½ cm. beneath the surface finishes. All holes voids, depressions and other defects shall be enlarged, roughened and repaired with mortar of the same grade as that even surface similar surface all to the satisfaction of the Engineer. Cracks shall be cut out and the sides dove tailed to a depth of at least 5cm. and shall thereafter with a mortar of the same grade as that in the original surface.
- The concrete mixture to be used for all plastering works must be CLASS “A” MORTARS – 1:3 by volume.

## **B. ISLAND BARANGAY SCHOOL**

### **Earthworks**

#### *1. Clearing and Grubbing*

- This item of work consists of clearing, grubbing, removing and disposing all vegetation and debris as designated in the Contract, except those objects that are designated to remain in place or are to be removed in consonance with other provisions of this Specification. The work shall also include the preservation from injury or defacement of all objects designated to remain.
- The engineer will establish the limits of work and designate all trees, shrubs, plants and other things to remain. The Contractor shall preserve all objects designated to remain.

#### *2. Structure Excavation*

- This item of work includes excavation for footing, tie beam, and in conformity with the lines, grades and dimensions shown on the Plans or established by the Engineer.
- All suitable materials removed from the excavation shall be used in the formation of the embankment, subgrade, shoulders, slopes, bedding, and backfill for structures, and for other purposes shown on the Plans or as directed.
- The Engineer will designate as unsuitable those soils that cannot be properly compacted in embankments. Only approved materials shall be used in the construction of embankments and backfills. Materials encountered in the excavation and determined by the Engineer as suitable for topping, road finishing, slope protection, or other purposes shall be conserved and utilized as directed by the Engineer. Borrow materials shall not be placed until after the readily accessible materials from roadway excavation has been placed in the fill, unless otherwise permitted or directed by the Engineer.

### **Plain and Reinforced Concrete Works**

#### *1. Structural Concrete (Class A) 28 days*

- All concrete surfaces including those indicated as cement plaster on drawings, in all interior walls and other concrete surfaces without specified finish, shall be done and applied in accordance with the following provisions.
- Immediately after the removal of forms, all projecting wires and bolts and other devices and for drying forms shall be cut off beneath the surface finishes. All hole voids and other defer shall be enlarged, roughened and required with a mortar of the same grade as that even surface similar concrete surfaces to the satisfaction of the engineer. Cracks shall be cut out and the sides dove tailed to a depth of at least 5cm and shall thereafter be filled with a mortar of the same grade as that in the original surface.

## 2. Reinforcing Steel (Deformed, Grade 40)

- This item covers the supply of labor, materials and equipment necessary for the installation of reinforcing steel bars (Grade 40) of structures. (Please refer to plans).
- Reinforcing bars shall be standard commercial, deformed steel such as NSC steel or other locally available equivalent. Steel bars shall be free from rust scales. Splices in bars shall be made at critical points of maximum stress.

## Finishing and Other Civil Works

### 1. Carpentry Works

- This item covers the supply of labor, materials and equipment necessary for the fabrication of White Board, Kitchen Cabinet, and Tables & Chair. All materials shall be of approved high quality. Please refer to the plan for the complete details.

### 2. Roofing Works

- This item of work includes the installation of corrugated pre-painted metal sheets above 0.427mm.
- Laying should start from the opposite end direction of the prevailing monsoon wind.
- Apply sufficient amount of roof sealant to ensure leak free roofing.
- All works shall be done in such a manner that will ensure a strong and lasting leak proof installation.

### 3. Cement Plaster/ Floor Finish

- All concrete surfaces including those indicated as cement plaster/floor finish on plan, in all interior walls and other concrete surfaces without specified finish, shall be done and applied in accordance with the following provisions.
- Immediately after the removal of forms, all projecting wires and bolts and other devices used for trying forms shall be cut off at least ½ cm. beneath the surface finishes. All holes voids, depressions and other defects shall be enlarged, roughened and repaired with mortar of the same grade as that even surface similar surface all to the satisfaction of the Engineer. Cracks shall be cut out and the sides dove tailed to a depth of at least 5cm. and shall thereafter with a mortar of the same grade as that in the original surface.
- The concrete mixture to be used for all plastering works must be CLASS “A” MORTARS – 1:3 by volume.

## C. OTHER GENERAL REQUIREMENTS

### 1. Provision of Bunkhouse (Rental Basis) & Other Facilities

- This item includes the construction the temporary facilities for the engineer and temporary bunkhouse for rental basis including the power and water supply for the storage of the materials / equipment needed for the whole duration of the project.

### 2. Occupational Construction Safety and Health

- The contractor needs to establish safety goals and objectives develop and implement a written Safety and Health program. The contractor also needs to provide a Part-Time Safety Practitioner and First Aider who undergone training at DOLE/ Red cross respectively.

### 3. Project Billboard/ Signboard

- Fabrication & installation of plywood size (1.2m x 2.4m) standard billboard with coco lumber frame.

## **B. WATER SYSTEM**

### *8. Rehabilitation of Basagan Water System, Brgy. Basagan, Tabaco City*

#### **Excavation Works**

The contractor shall perform all excavation of every description and of whatever materials encountered to the depth shown on the drawing or as directed by the Architect or to the Resident Engineer. All excavated materials not required for fill or backfill shall be removed and wasted as directed by the Architect. It shall be done in accordance with the lines and grades as indicated in the plans. Bottoms of excavation shall be level, free from loose materials on required levels in undisturbed earth on compacted fill.

#### **Concrete Works**

This item of work is consist of furnishing, placin,g and finishing concrete in all structures except pavements in accordance with this Specification and conforming to the lines, grades, and dimensions shown on the Plans.

#### **Reinforcing Steel Bar**

This item of work consists of furnishing, bending, fabricating and placing of steel reinforcement all in Grade 40.

#### **Waterproofing**

This Item shall consist of furnishing all waterproofing materials, labor, tools, equipment and other facilities in undertaking the proper installation works required as shown on the Plans and in accordance with this Specification. Cement-base waterproofing powder mix shall be cement-base, aggregate type, heavy duty, water-proof coating for reinforced concrete surface and masonry exposed to water.

#### **Plumbing Works**

1. Pipes and accessories shall be handled in such manner as to insure placement in the trench in sound, undamaged condition. Cutting shall be done when necessary and in neat workmanlike manner.
2. Pipe shall be laid upgraded true to lines and grades as shown in the drawings or as directed by the Architect with grooves upgrade unless otherwise permitted by the Architect. The pipe sections shall be laid and fitted to form a smooth and uniform invert when completed. The full length of each section of the pipe shall be rest solidly on the pipe bed with recessed excavated to accommodate cement mortar joint.
3. Water shall be kept out of the trench until cement mortar has the grade or joint disturbed after laying shall be taken out and re-laid.
4. Any section of the pipe to be defective either before or after laying shall be replaced with new pipe without additional expenses to the owner.

#### **Bunkhouse and Other Facilities**

This item includes the construction OF temporary facilities for the engineer and a temporary bunkhouse for rental basis including the power and water supply for the storage of the materials/equipment needed for the whole duration of the project

## **Formworks**

This item shall consist of designing, constructing, and removing forms and falsework to temporarily support concrete, girders, and other structural elements until the structure is completed to the point it can support itself.

## **Occupational Construction Safety and Health**

The contractor needs to establish safety goals and objectives develop and implement a written Safety and Health program. The contractor also needs to provide a Part-Time Safety Practitioner and First Aider who undergone training at DOLE/ Red cross respectively.

## **Project Billboard/ Signboard**

Fabrication & installation of plywood size (1.2m x 2.4m) standard billboard with coco lumber frame.

## ***9. Rehabilitation of Bonot Water System, Brgy. Bonot, Tabaco City***

### **Mobilization and Demobilization**

Demobilization shall include all activities and costs for transportation of personnel, equipment, and supplies not required or included in the contract from the site; including the disassembly, removal, and site clean-up, of offices, buildings and other facilities assembled on the site specifically for this contract.

### **Deepwell Exploration**

A. Drilling of 152mm (6") dia pilot hole, including strata sampling for every meter of penetration and/or less when change in formation occurs.

-Drilling of production well in all geologic possible environments to a minimum diameter of 6" and to an acceptable minimum depth of water column approved by the field supervisor. Average total depth of well is expected to be 90 m.

B. Reaming of 152 mm pilot hole to 300 mm diameter from ground level to final depth

-The borehole is drilled by rotating a bit, and cuttings are removed by continuous circulation of a drilling fluid as the bit penetrates the formation.

C. Supply & Installation of 152 mm stainless wirewound screen casing

-Installation of screen casings with an internal diameter of 152mm (6'')

D. Supply & Installation of 110 mm diameter blank B.I. pipe and wirewound stainless screen casing

-Installation of blank B.I. pipe with a 110 mm internal diameter for total depth of well except where screen casings are installed. There should be at least 3m of 110 mm internal diameter blank B.I. Pipe casing at the bottom of each well.

E. Supply & Installation of #15 Peebles Gravel Pack

-As is often necessary, an artificial properly graded gravel pack will be placed in the annular space between the well and the outer face of the casing. Proper techniques will be used for the accurate placing of this pack. Gravel Pack materials should not just be dropped without regards to causing the well collapsing in some sections. The gravel to be used should be clean, borehole-rounded and the grains should be hard, and of alluvial origin.

F. Treatment with Polyphosphate Detergent

-Clean and disinfect the borehole with polyphosphate according to the calculated volume.

G. Well Development by Bailing & Surging

-Surging should start above the screen to reduce the possibility of "sand-locking" the surge block. Initial

surging should be with a long stroke and at a slow rate (20 to 25 strokes per minute); after surging above the screen, the hole should be cleaned and surging started at the lower end of the screen - gradually working upward until the entire screen has been developed .

-When the amount of fine material drawn into the well begins to decrease, the process should be repeated, beginning at the bottom of the screen, but with a faster stroke (30 to 35 strokes per minute). The final surging should be as rapid as possible for as long as possible.

#### H. Well Development by Overpumping

-If the water level is within 3.05 to 4.57 m (10 to 15 ft) of ground surface, it is sometimes possible to use the mud pump as a suction pump to pump water from the well for 2 to 3 hours.

#### I. Well Development by Air Lifting

-Developing of borehole by airlifting for a minimum of 3 hours until a stabilized satisfactory yield is reached and the turbidity is less than 5 NTU.

#### J. Pumping Test

-The pumping test will consist of continuously pumping the borehole at the maximum discharge of 1,200 litres per hour for 4 hours followed by a 2 hour recovery test. The measurement of the dynamic water levels will be performed according to the logarithmic timescale schedule normally used for test pumping water boreholes.

#### K. Supply & Install Clay Backfill

-Installation of required inert backfill. For average well to specifications above the volume of inert backfill is 1 cubic metre.

#### L. Sealing with Cement Grout

-The grout is placed through the funnel & tremie in one continuous operation, beginning at the bottom of the zone being sealed. The bottom end of the grout pipe should be kept full of grout and remain submerged in grout during the operation. The grout pipe is gradually withdrawn as the grout fills the annular space. This is accomplished by disjuncting it in typically 10 foot sections.

#### M. Disinfection of Well

-Sterilize the borehole with a chlorine solution yielding at least 50 mg/l of active chlorine in all parts of the borehole. The chlorine solution may be prepared from calcium hypochlorite, sodium hypochlorite or gaseous chlorine. The chlorine solution should stay in the borehole for at least four hours at the specified concentration.

### **Bunkhouse and Other Facilities**

This item includes the construction the temporary facilities for the engineer and temporary bunkhouse for rental basis including the power and water supply for the storage of the materials / equipment needed for the whole duration of the project.

### **Occupational Construction Safety and Health**

The contractor needs to establish safety goals and objectives develop and implement a written Safety and Health program. The contractor also needs to provide a Part-Time Safety Practitioner and First Aider who undergone training at DOLE/ Red cross respectively.

### **Project Billboard/ Signboard**

Fabrication & installation of plywood size (1.2m x 2.4m) standard billboard with coco lumber frame.

## *10. Rehabilitation of Buhian Water System, Brgy. Buhian, Tabaco City*

### **Excavation Works**

The contractor shall perform all excavation of every description and of whatever materials encountered to the depth shown on the drawing or as directed by the Architect or to the Resident Engineer. All excavated materials not required for fill or backfill shall be removed and wasted as directed by the Architect. It shall be done in accordance with the lines and grades as indicated in the plans. Bottoms of excavation shall be level, free from loose materials on required levels in undisturbed earth on compacted fill.

### **Concrete Works**

This item of work is consist of furnishing, placing and finishing concrete in all structures except pavements in accordance with this Specification and conforming to the lines, grades, and dimensions shown on the Plans.

### **Reinforcing Steel Bar**

This item of work consists of furnishing, bending, fabricating and placing of steel reinforcement all in Grade 40.

### **Waterproofing**

This Item shall consist of furnishing all waterproofing materials, labor, tools, equipment and other facilities in undertaking the proper installation works required as shown on the Plans and in accordance with this Specification. Cement-base waterproofing powder mix shall be cement-base, aggregate type, heavy duty, water-proof coating for reinforced concrete surface and masonry exposed to water.

### **Plumbing Works**

1. Pipes and accessories shall be handled in such manner as to insure placement in the trench in sound, undamaged condition. Cutting shall be done when necessary and in neat workmanlike manner.
2. Pipe shall be laid upgraded true to lines and grades as shown in the drawings or as directed by the Architect with grooves upgrade unless otherwise permitted by the Architect. The pipe sections shall be laid and fitted to form a smooth and uniform invert when completed. The full length of each section of the pipe shall be rest solidly on the pipe bed with recessed excavated to accommodate cement mortar joint.
3. Water shall be kept out of the trench until cement mortar has the grade or joint disturbed after laying shall be taken out and re-laid.
4. Any section of the pipe to be defective either before or after laying shall be replaced with new pipe without additional expenses to the owner.

### **Bunkhouse and Other Facilities**

This item includes the construction the temporary facilities for the engineer and temporary bunkhouse for rental basis including the power and water supply for the storage of the materials / equipment needed for the whole duration of the project

### **Formworks**

This item shall consist of designing, constructing and removing forms and falsework to temporarily support concrete, girders and other structural elements until the structure is completed to the point it can support itself.

## **Occupational Construction Safety and Health**

The contractor needs to establish safety goals and objectives develop and implement a written Safety and Health program. The contractor also needs to provide a Part-Time Safety Practitioner and First Aider who undergone training at DOLE/ Red cross respectively.

## **Project Billboard/ Signboard**

Fabrication & installation of plywood size (1.2m x 2.4m) standard billboard with coco lumber frame.

## ***11. Rehabilitation of Pinagbobong Water System, Brgy. Pinagbobong, Tabaco City***

### **Clearing & Grubbing**

This item shall consist of clearing, grubbing, removing and disposing all vegetation and debris as designated in the Contract, except those objects that are designated to remain in place or are to be removed in consonance with other provisions of this Specification. The work shall also include the preservation from injury or defacement of all objects designated to remain.

### **Excavation Works**

The contractor shall perform all excavation of every description and of whatever materials encountered to the depth shown on the drawing or as directed by the Architect or to the Resident Engineer. All excavated materials not required for fill or backfill shall be removed and wasted as directed by the Architect. It shall be done in accordance with the lines and grades as indicated in the plans. Bottoms of excavation shall be level, free from loose materials on required levels in undisturbed earth on compacted fill.

### **Concrete Works**

This item of work is consist of furnishing, placing and finishing concrete in all structures except pavements in accordance with this Specification and conforming to the lines, grades, and dimensions shown on the Plans.

### **Reinforcing Steel Bar**

This item of work consists of furnishing, bending, fabricating and placing of steel reinforcement all in Grade 40.

### **Plumbing Works**

1. Pipes and accessories shall be handled in such manner as to insure placement in the trench in sound, undamaged condition. Cutting shall be done when necessary and in neat workmanlike manner.
2. Pipe shall be laid upgraded true to lines and grades as shown in the drawings or as directed by the Architect with grooves upgrade unless otherwise permitted by the Architect. The pipe sections shall be laid and fitted to form a smooth and uniform invert when completed. The full length of each section of the pipe shall be rest solidly on the pipe bed with recessed excavated to accommodate cement mortar joint.
3. Water shall be kept out of the trench until cement mortar has the grade or joint disturbed after laying shall be taken out and re-laid.
4. Any section of the pipe to be defective either before or after laying shall be replaced with new pipe without additional expenses to the owner.

### **Bunkhouse and Other Facilities**

This item includes the construction the temporary facilities for the engineer and temporary bunkhouse for rental basis including the power and water supply for the storage of the materials / equipment needed for the whole duration of the project

### **Formworks**

This item shall consist of designing, constructing and removing forms and falsework to temporarily support concrete, girders and other structural elements until the structure is completed to the point it can support itself.

### **Occupational Construction Safety and Health**

The contractor needs to establish safety goals and objectives develop and implement a written Safety and Health program. The contractor also needs to provide a Part-Time Safety Practitioner and First Aider who undergone training at DOLE/ Red cross respectively.

### **Project Billboard/ Signboard**

Fabrication & installation of plywood size (1.2m x 2.4m) standard billboard with coco lumber frame.

## ***12. Rehabilitation of Bognabong Water System, Brgy. Bognabong, Tabaco City***

### **Excavation Works**

The contractor shall perform all excavation of every description and of whatever materials encountered to the depth shown on the drawing or as directed by the Architect or to the Resident Engineer. All excavated materials not required for fill or backfill shall be removed and wasted as directed by the Architect. It shall be done in accordance with the lines and grades as indicated in the plans. Bottoms of excavation shall be level, free from loose materials on required levels in undisturbed earth on compacted fill.

### **Concrete Works**

This item of work is consist of furnishing, placing and finishing concrete in all structures except pavements in accordance with this Specification and conforming to the lines, grades, and dimensions shown on the Plans.

### **Reinforcing Steel Bar**

This item of work consists of furnishing, bending, fabricating and placing of steel reinforcement all in Grade 40.

### **Waterproofing**

This Item shall consist of furnishing all waterproofing materials, labor, tools, equipment and other facilities in undertaking the proper installation works required as shown on the Plans and in accordance with this Specification. Cement-base waterproofing powder mix shall be cement-base, aggregate type, heavy duty, water-proof coating for reinforced concrete surface and masonry exposed to water.

### **Plumbing Works**

1. Pipes and accessories shall be handled in such manner as to insure placement in the trench in sound, undamaged condition. Cutting shall be done when necessary and in neat workmanlike manner.
2. Pipe shall be laid upgraded true to lines and grades as shown in the drawings or as directed by the Architect with grooves upgrade unless otherwise permitted by the Architect. The pipe sections shall be laid and fitted to form a smooth and uniform invert when completed. The full length of each section of the pipe shall be rest solidly on the pipe bed with recessed excavated accommodate cement mortar joint.

3. Water shall be kept out of the trench until cement mortar has the grade or joint disturbed after laying shall be taken out and re-laid.

4. Any section of the pipe to be defective either before or after laying shall be replaced with new pipe without additional expenses to the owner.

### **Bunkhouse and Other Facilities**

This item includes the construction the temporary facilities for the engineer and temporary bunkhouse for rental basis including the power and water supply for the storage of the materials / equipment needed for the whole duration of the project

### **Formworks**

This item shall consist of designing, constructing and removing forms and falsework to temporarily support concrete, girders and other structural elements until the structure is completed to the point it can support itself.

### **Occupational Construction Safety and Health**

The contractor needs to establish safety goals and objectives develop and implement a written Safety and Health program. The contractor also needs to provide a Part-Time Safety Practitioner and First Aider who undergone training at DOLE/ Red cross respectively.

### **Project Billboard/ Signboard**

Fabrication & installation of plywood size (1.2m x 2.4m) standard billboard with coco lumber frame.

## ***13. Rehabilitation of Mariroc Water System, Brgy. Mariroc, Tabaco City***

### **Excavation Works**

The contractor shall perform all excavation of every description and of whatever materials encountered to the depth shown on the drawing or as directed by the Architect or to the Resident Engineer. All excavated materials not required for fill or backfill shall be removed and wasted as directed by the Architect. It shall be done in accordance with the lines and grades as indicated in the plans. Bottoms of excavation shall be level, free from loose materials on required levels in undisturbed earth on compacted fill.

### **Concrete Works**

This item of work is consist of furnishing, placing and finishing concrete in all structures except pavements in accordance with this Specification and conforming to the lines, grades, and dimensions shown on the Plans.

### **Reinforcing Steel Bar**

This item of work consists of furnishing, bending, fabricating and placing of steel reinforcement all in Grade 40.

### **Waterproofing**

This Item shall consist of furnishing all waterproofing materials, labor, tools, equipment and other facilities in undertaking the proper installation works required as shown on the Plans and in accordance with this Specification. Cement-base waterproofing powder mix shall be cement-base, aggregate type, heavy duty, water-proof coating for reinforced concrete surface and masonry exposed to water.

## **Plumbing Works**

1. Pipes and accessories shall be handled in such manner as to insure placement in the trench in sound, undamaged condition. Cutting shall be done when necessary and in neat workmanlike manner.
2. Pipe shall be laid upgraded true to lines and grades as shown in the drawings or as directed by the Architect with grooves upgrade unless otherwise permitted by the Architect. The pipe sections shall be laid and fitted to form a smooth and uniform invert when completed. The full length of each section of the pipe shall be rest solidly on the pipe bed with recessed excavated to accommodate cement mortar joint.
3. Water shall be kept out of the trench until cement mortar has the grade or joint disturbed after laying shall be taken out and re-laid.

### ***14. Rehab/Improvement of San Miguel Island (SMI) Water System, Brgy. Visita and Sitio Malictay, San Miguel Island, Tabaco City***

## **Mobilization and Demobilization**

Demobilization shall include all activities and costs for transportation of personnel, equipment, and supplies not required or included in the contract from the site; including the disassembly, removal, and site clean-up, of offices, buildings and other facilities assembled on the site specifically for this contract.

## **Deepwell Exploration**

A. Drilling of 152mm (6") dia pilot hole, including strata sampling for every meter of penetration and/or less when change in formation occurs.

-Drilling of production well in all geologic possible environments to a minimum diameter of 6" and to an acceptable minimum depth of water column approved by the field supervisor. Average total depth of well is expected to be 90 m.

B. Reaming of 152 mm pilot hole to 300 mm diameter from ground level to final depth

-The borehole is drilled by rotating a bit, and cuttings are removed by continuous circulation of a drilling fluid as the bit penetrates the formation.

C. Supply & Installation of 152 mm stainless wirewound screen casing

-Installation of screen casings with an internal diameter of 152mm (6'')

D. Supply & Installation of 110 mm diameter blank B.I. pipe and wirewound stainless screen casing

-Installation of blank B.I. pipe with a 110 mm internal diameter for total depth of well except where screen casings are installed. There should be at least 3m of 110 mm internal diameter blank B.I. Pipe casing at the bottom of each well.

E. Supply & Installation of #15 Peebles Gravel Pack

-As is often necessary, an artificial properly graded gravel pack will be placed in the annular space between the well and the outer face of the casing. Proper techniques will be used for the accurate placing of this pack. Gravel Pack materials should not just be dropped without regards to causing the well collapsing in some sections. The gravel to be used should be clean, borehole-rounded and the grains should be hard, and of alluvial origin.

F. Treatment with Polyphosphate Detergent

-Clean and disinfect the borehole with polyphosphate according to the calculated volume.

G. Well Development by Bailing & Surging

-Surging should start above the screen to reduce the possibility of "sand-locking" the surge block. Initial

surging should be with a long stroke and at a slow rate (20 to 25 strokes per minute); after surging above the screen, the hole should be cleaned and surging started at the lower end of the screen - gradually working upward until the entire screen has been developed.

-When the amount of fine material drawn into the well begins to decrease, the process should be repeated, beginning at the bottom of the screen, but with a faster stroke (30 to 35 strokes per minute). The final surging should be as rapid as possible for as long as possible.

#### H. Well Development by Overpumping

-If the water level is within 3.05 to 4.57 m (10 to 15 ft) of ground surface, it is sometimes possible to use the mud pump as a suction pump to pump water from the well for 2 to 3 hours.

#### I. Well Development by Air Lifting

-Developing of borehole by airlifting for a minimum of 3 hours until a stabilized satisfactory yield is reached and the turbidity is less than 5 NTU.

#### J. Pumping Test

-The pumping test will consist of continuously pumping the borehole at the maximum discharge of 1,200 litres per hour for 4 hours followed by a 2 hour recovery test. The measurement of the dynamic water levels will be performed according to the logarithmic timescale schedule normally used for test pumping water boreholes.

#### K. Supply & Install Clay Backfill

-Installation of required inert backfill. For average well to specifications above the volume of inert backfill is 1 cubic metre.

#### L. Sealing with Cement Grout

-The grout is placed through the funnel & tremie in one continuous operation, beginning at the bottom of the zone being sealed. The bottom end of the grout pipe should be kept full of grout and remain submerged in grout during the operation. The grout pipe is gradually withdrawn as the grout fills the annular space. This is accomplished by disjuncting it in typically 10 foot sections.

#### M. Disinfection of Well

-Sterilize the borehole with a chlorine solution yielding at least 50 mg/l of active chlorine in all parts of the borehole. The chlorine solution may be prepared from calcium hypochlorite, sodium hypochlorite or gaseous chlorine. The chlorine solution should stay in the borehole for at least four hours at the specified concentration.

### **Excavation Works**

The contractor shall perform all excavation of every description and of whatever materials encountered to the depth shown on the drawing or as directed by the Architect or to the Resident Engineer. All excavated materials not required for fill or backfill shall be removed and wasted as directed by the Architect. It shall be done in accordance with the lines and grades as indicated in the plans. Bottoms of excavation shall be level, free from loose materials on required levels in undisturbed earth on compacted fill.

### **Concrete Works**

This item of work is consist of furnishing, placing and finishing concrete in all structures except pavements in accordance with this Specification and conforming to the lines, grades, and dimensions shown on the Plans.

### **Reinforcing Steel Bar**

This item of work consists of furnishing, bending, fabricating and placing of steel reinforcement all in Grade 40.

### **Waterproofing**

This Item shall consist of furnishing all waterproofing materials, labor, tools, equipment and other facilities in undertaking the proper installation works required as shown on the Plans and in accordance with this Specification. Cement-base waterproofing powder mix shall be cement-base, aggregate type, heavy duty, water-proof coating for reinforced concrete surface and masonry exposed to water.

### **Formworks**

This item shall consist of designing, constructing and removing forms and falsework to temporarily support concrete, girders and other structural elements until the structure is completed to the point it can support itself.

### **Plumbing and Other Electrical Works**

The work to be done under this Division of the Specifications consist of the fabrication, complete in all details, of the Plumbing Works, at the subject premises, and all work and materials incidental to the proper completion of the installation, except those portions of the work which are expressly stated to be done by Others. All Electrical Works complete in all respects shall be provided in accordance with the requirements of the Contract Documents. The scope of works shall include all stated electrical works.

### **Bunkhouse and Other Facilities**

This item includes the construction the temporary facilities for the engineer and temporary bunkhouse for rental basis including the power and water supply for the storage of the materials / equipment needed for the whole duration of the project.

### **Occupational Construction Safety and Health**

The contractor needs to establish safety goals and objectives develop and implement a written Safety and Health program. The contractor also needs to provide a Part-Time Safety Practitioner and First Aider who undergone training at DOLE/ Red cross respectively.

### **Project Billboard/ Signboard**

Fabrication & installation of plywood size (1.2m x 2.4m) standard billboard with coco lumber frame.

## **C. OTHER INFRASTRUCTURES**

### ***15. Rechanneling/Desilting of Tagas River, Divino Rostro-San Roque Section, (Downstream of Tagas Bridge), Tabaco City***

#### **Clearing & Deepening of Waterways**

This item of work consists of clearing and excavation of river beds for the purpose of deepening up to the required bottom elevation and grade line disposal of the same areas indicated on the Plans or as designated by the assigned Project Engineer. This also includes the use of backhoe (crawler type) for deepening of waterways and trailer truck for clearing of excavated materials.

### **Removal & Disposal of Silted Materials**

This item of work consists of removing and disposing silt or any unsuitable materials or soil layers using backhoe & stake truck.

### **Project Billboard/ Signboard**

Fabrication & installation of plywood size (1.2m x 2.4m) standard billboard with coco lumber frame.

### **Occupational Construction Safety and Health**

The contractor needs to establish safety goals and objectives develop and implement a written Safety and Health program. The contractor also needs to provide a Part-Time Safety Practitioner and First Aider who undergone training at DOLE/ Red cross respectively.

## ***16. Rehabilitation of Irrigation System, Brgy. Guinobat, Tabaco City***

### **Clearing & Grubbing**

This item shall consist of clearing, grubbing, removing and disposing all vegetation and debris as designated in the Contract, except those objects that are designated to remain in place or are to be removed in consonance with other provisions of this Specification. The work shall also include the preservation from injury or defacement of all objects designated to remain.

### ***Temporary Diversion of Waterway***

This item of work shall consist of the installation of a temporary stream diversion used to reroute water from a stream or direct flows to a designated portion of the stream channel to allow for construction activities to take place in the stream, along the banks, or beneath the active channel.

### ***Demolition & Removal of Obstruction***

This item of work includes cutting of concrete with the use of concrete cutter/saw and removal of obstruction by common laborers.

### **Reinforcing Steel**

This item of work consists of furnishing, bending, fabricating and placing of the following steel reinforcement all in Grade 40.

### **Structural Concrete**

This item of work consists of furnishing, placing and finishing concrete in all structures except pavements in accordance with this Specification and conforming to the lines, grades, and dimensions shown on the Plans.

Concrete shall consist of a mixture of Portland Cement, fine aggregate, coarse aggregate and water.

All concrete shall be Class A mixture with the minimum compressive strength of 20.7 MN/m<sup>2</sup> or 3000 psi.

### **Formworks**

This item shall consist of designing, constructing and removing forms and falsework to temporarily support concrete, girders and other structural elements until the structure is completed to the point it can support itself.

### **Removal & Disposal of Excavated/ Unsuitable Materials**

This item of work consists of removing silt or any unsuitable materials or soil layers using a stake truck.

## **Bunkhouse**

The contractor will provide or in a rental basis a bunkhouse (including the power and water supply) for the storage of the materials/equipment needed for the whole duration of the project.

## **Fab/Installation of Billboard**

Fabrication & installation of plywood size (1.2m x 2.4m) standard billboard with coco lumber frame.

## **Occupational Safety**

The contractor needs to establish safety goals and objectives, develop and implement a written Safety and Health program. The contractor also needs to provide a Part-Time Safety Practitioner and First Aider who undergone training at DOLE/Red cross respectively

## ***17. Rehabilitation/Improvement of San Miguel Island Roadways, San Miguel Island, Tabaco City (Hacienda to Visita Section)***

### **Clearing & Grubbing**

This item shall consist of clearing, grubbing, removing and disposing all vegetation and debris as designated in the Contract, except those objects that are designated to remain in place or are to be removed in consonance with other provisions of this Specification. The work shall also include the preservation from injury or defacement of all objects designated to remain.

### **Structure Excavation**

This item of work consists of excavation and the disposal of materials in accordance with this specification and in conformity with the lines, grades and dimensions shown on the Plans or established by the Engineer. The Contractor shall notify the Engineer sufficiently in advance of the beginning of any excavation so that cross-sectional elevations and measurements any be taken on the undisturbed ground. The natural ground adjacent to the structure shall not be disturbed without permission of the Engineer.

### **Backfill**

This item shall consist of the construction of embankment from excavated materials in accordance with the specification and in conformity with the lines, grades and dimensions shown on the plans or established by the engineer.

### **Removal and Disposal of Unsuitable (Excavated Materials)**

This item of work consists of removing silt or any unsuitable/excavated materials or soil layers.

### **Structural Concrete**

This item of work is consist of furnishing, placing and finishing concrete in all structures except pavements in accordance with this Specification and conforming to the lines, grades, and dimensions shown on the Plans.

### **Reinforcing Steel**

This item of work consists of furnishing, bending, fabricating and placing of steel reinforcement all in Grade 40.

### **Masonry Works**

This item shall consist of furnishing and placing of CHB Non Load Bearing, 4" thick including reinforcing steel bar. Concrete masonry construction shall include the furnishing of all labor, material, and equipment, and performing all operations necessary to execute all concrete masonry construction, as specified.

### **RCPC, 0.45m Ø**

This item shall consist of the construction or reconstruction of pipe culverts and storm drains, hereinafter referred to as “conduit” in accordance with this Specification and in conformity with the lines and grades shown on the Plans or as established by the Engineer.

### ***18. Rehabilitation / Improvement of Roadways at Tabaco South Elementary School, Tabaco City***

#### **Clearing & Grubbing**

This item of work consists of clearing, grubbing, removing and disposing all vegetation and debris as designated in the Contract, except those objects that are designated to remain in place or are to be removed in consonance with other provisions of this Specification. The work shall also include the preservation from injury or defacement of all objects designated to remain.

#### **Covered Canal**

This item of work includes the fabrication of canal cover in accordance with the specification and shown on the plans or as established by the Engineer.

#### **Sub-Grade Preparation**

This item shall consist of the preparation of the subgrade for the support of overlying structural layers using plate compactor. It shall extend to full width of the roadway.

#### **Aggregate Base Course**

- This item shall consist of furnishing, placing and compacting an aggregate base course on a prepared subgrade/subbase in accordance with this Specification and the lines, grades, thickness and typical cross-sections shown on the Plans, or as established by the Engineer.
- Aggregate for base course shall consist of hard, durable particles or fragments of crushed stone, crushed slag or crushed or natural gravel and filler of natural or crushed sand or other finely divided mineral matter. The composite material shall be free from vegetable matter and lumps or balls of clay, and shall be of such nature that it can be compacted readily to form a firm, stable base.

#### **Portland Cement Concrete Pavement (150 mm thk)**

This item of work consists of pavement of 0.15 m thick concrete pavement of Portland Cement Concrete, with or without bars with dimensions as shown in the plan.

#### **Removal & Disposal of Excavated/ Unsuitable Materials**

This item of work consists of removing silt or any unsuitable materials or soil layers using a stake truck.

#### **Bunkhouse**

The contractor will provide or in a rental basis a bunkhouse (including the power and water supply) for the storage of the materials/equipment needed for the whole duration of the project.

#### **Fab/Installation of Billboard**

Fabrication & installation of plywood size (1.2m x 2.4m) standard billboard with coco lumber frame.

#### **Occupational Safety**

The contractor needs to establish safety goals and objectives, develop and implement a written Safety and Health program. The contractor also needs to provide a Part-Time Safety Practitioner and First Aider who undergone training at DOLE/Red cross respectively.

## *Section VII. Drawings*

Copy of the Plans and Drawings can be found online at:

**[https://drive.google.com/drive/folders/1KZa0pcihXDF8EdQBQB5OLCto2VJAZ4GY?usp=drive\\_link](https://drive.google.com/drive/folders/1KZa0pcihXDF8EdQBQB5OLCto2VJAZ4GY?usp=drive_link)**

*Section VIII. Bill of Quantities*

**Project Title:** Construction/Improvement/Rehabilitation of Various Public Infrastructure Projects (Buildings, Water System and Other Infrastructure Projects)

**Location:** Various Barangays, Tabaco City

**Contract ID No.** 025-07-2023-INFRA

**Approved Budget for the Contract (ABC):** Php 49,900,637.91

**Duration:** 240 Calendar Days

## BILL OF QUANTITIES

Item No.	Description of Work to be Done	Qty	Unit	Unit Price (Php)	Total Amount (Php)
<b>A.</b>	<b>BUILDING</b>				
<b>1</b>	<b>Rehabilitation of San Miguel Island Multi-Purpose Hall at Visita, San Miguel Island, Tabaco City</b>				
	A.	Tile Works	637.00	sq.m	
	B.	Electrical Works			
	1	Solar Panel with inverter, battery and other devices	1.00	lot	
	2	Generator Set	1.00	lot	
	C.	Fire Protection Sprinkler System (AFSS)	1.00	lot	
	D.	Amenities	1.00	lot	
	E.	Provision of Bunkhouse (Rental Basis) & Other Facilities	1.00	lot	
	F.	Occupational Safety and Health Program	1.00	lot	
	G.	Project Billboard/Signboard	1.00	unit	
	<i>Subtotal</i>				
<b>2</b>	<b>Construction of Child Development Center at Brgy. Bangkilingan, Tabaco City</b>				
	<b>A.</b>	<b>Construction of the Main Building</b>			
	<b>Part A</b>	<b>Earthworks</b>			
	1700	Clearing and Grubbing	112.80	sq.m.	
	803(1)a	Structure Excavation (Common Soil)	52.60	cu.m.	
	804(1)a	Embankment (From Structure Excavation)	40.56	cu.m.	
	804(1)b	Embankment (From Borrow)	38.63	cu.m.	
	804(4)	Gravel Fill	13.52	cu.m.	
	<b>Part B</b>	<b>Plain And Reinforced Concrete Works</b>			
	900(1)c1	Structural Concrete (Class A) 28 days	45.47	cu.m.	
	902(1)a	Reinforcing Steel (Deformed, Grade 40)	8,896.95	kgs	
	903(2)	Formworks and False Works	118.00	sq.m.	
	<b>Part C</b>	<b>Finishing And Other Civil Works</b>			
	1000(1)	Soil Poisoning	118.00	liters	
	1001(5)a	Catch Basin (Concrete)	7.00	each	
	1001(5)b	Septic Tank	1.00	lot	
	1001(8)	Sewer Line Works	1.00	lot	
	1001(9)	Storm Drainage and Downspout	1.00	lot	
	1002(4)	Plumbing Works	1.00	lot	
	1003(1)b1	Ceiling (4.5mm, Metal Frame, Fiber Cement Board)	70.19	sq.m.	
	1005(1)	Steel Casement Window	14.77	sq.m.	
	1010(2)a	Doors (Wooden Panel / Flush)	5.88	sq.m.	
	1005(2)	Doors and Window Screen	18.97	sq.m.	
	1016(1)a	Waterproofing (Cement-Base)	111.69	sq.m.	
	1018(2)	Unglazed Tiles	5.45	sq.m.	
	1018(5)	Glazed Tiles	21.14	sq.m.	
	1018(8)	Tactiles (PWD Ramp)	8.76	sq.m.	
	1027(1)	Cement Plaster Finish	353.94	sq.m.	
	1027(2)	Cement Floor Finish	66.18	sq.m.	

	1046(2)a1	CHB Non Load Bearing, 100mm (Incl. RSB)	6.49	sq.m.		
	1046(2)a2	CHB Non Load Bearing, 150mm (Incl. RSB)	137.81	sq.m.		
	1051	Railings	10.90	LM		
	1003	Carpentry Works	37.74	sq.m.		
	1032	Painting Works	455.25	sq.m.		
	SPL 1	Fabrication & Installation of Signages & Logo	1.00	lot		
	SPL 3	Handwash Area	1.00	lot		
	<b>Part D</b>	<b>Electrical Works</b>				
	1100(10)	Conduits, Boxes & Fittings	1.00	lot		
	1101	Wires and Wiring Devices	1.00	lot		
	1102(1)	Panelboard with Main & Branch Breakers	1.00	lot		
	1103(1)	Lighting Fixtures & Lamps	1.00	lot		
	1109(1)	Grounding System	1.00	lot		
	<b>Part D</b>	<b>Other General Requirements</b>				
	SPL 3	Bunkhouse and Other Facilities	1.00	lot		
	SPL 4	Project Billboard/Signboard	1.00	lot		
	B.7	Occupational Construction Safety and Health	1.00	lot		
					<i>Subtotal</i>	
<b>3</b>	<b>Construction of Child Development Center at Brgy. Sua-Igot, Tabaco City</b>					
	<b>A</b>	<b>Construction Of The Main Building</b>				
	<b>Part A</b>	<b>Earthworks</b>				
	1700	Clearing and Grubbing	112.80	sq.m.		
	803(1)a	Structure Excavation (Common Soil)	52.60	cu.m.		
	804(1)a	Embankment (From Structure Excavation)	40.56	cu.m.		
	804(1)b	Embankment (From Borrow)	120.19	cu.m.		
	804(4)	Gravel Fill	13.52	cu.m.		
	<b>Part B</b>	<b>Plain And Reinforced Concrete Works</b>				
	900(1)c1	Structural Concrete (Class A) 28 days	45.47	cu.m.		
	902(1)a	Reinforcing Steel (Deformed, Grade 40)	8,896.95	kgs		
	903(2)	Formworks and False Works	118.00	sq.m.		
	<b>Part C</b>	<b>Finishing And Other Civil Works</b>				
	1000(1)	Soil Poisoning	118.00	liters		
	1001(5)a	Catch Basin (Concrete)	7.00	each		
	1001(5)b	Septic Tank	1.00	lot		
	1001(8)	Sewer Line Works	1.00	lot		
	1001(9)	Storm Drainage and Downspout	1.00	lot		
	1002(4)	Plumbing Works	1.00	lot		
	1003(1)b1	Ceiling (4.5mm, Metal Frame, Fiber Cement Board)	70.19	sq.m.		
	1005(1)	Steel Casement Window	14.77	sq.m.		
	1010(2)a	Doors (Wooden Panel / Flush)	5.88	sq.m.		
	1005(2)	Doors and Window Screen	18.97	sq.m.		
	1016(1)a	Waterproofing (Cement-Base)	111.69	sq.m.		
	1018(2)	Unglazed Tiles	5.45	sq.m.		
	1018(5)	Glazed Tiles	21.14	sq.m.		
	1018(8)	Tactiles (PWD Ramp)	8.76	sq.m.		
	1027(1)	Cement Plaster Finish	353.94	sq.m.		
	1027(2)	Cement Floor Finish	66.18	sq.m.		
	1046(2)a1	CHB Non Load Bearing, 100mm (Incl. RSB)	6.49	sq.m.		
	1046(2)a2	CHB Non Load Bearing, 150mm (Incl. RSB)	137.81	sq.m.		
	1051	Railings	10.90	LM		
	1003	Carpentry Works	37.74	sq.m.		
	1032	Painting Works	455.25	sq.m.		

	SPL 1	Fabrication & Installation of Signages & Logo	1.00	lot		
	SPL 3	Handwash Area	1.00	lot		
	<b>Part D</b>	<b>Electrical Works</b>				
	1100(10)	Conduits, Boxes & Fittings	1.00	lot		
	1101	Wires and Wiring Devices	1.00	lot		
	1102(1)	Panelboard with Main & Brain Breakers	1.00	lot		
	1103(1)	Lighting Fixtures & Lamps	1.00	lot		
	1109(1)	Grounding System	1.00	lot		
	<b>Part D</b>	<b>Other General Requirements</b>				
	SPL 3	Bunkhouse and Other Facilities	1.00	lot		
	SPL 4	Project Billboard/Signboard	1.00	lot		
	B.7	Occupational Construction Safety and Health	1.00	lot		
					<i>Subtotal</i>	
<b>4</b>	<b>Rehabilitation / Improvement of Quinastillojan Elementary School, Quinastillojan, Tabaco City</b>					
	<b>Part A</b>	<b>Earthworks</b>				
	100(1)	Clearing & Grubbing	108.00	sq.m		
	803(1)a	Structure Excavation	1.18	cu.m		
	804(1)b	Embankment (from Borrow)	23.63	cu.m		
	<b>Part B</b>	<b>Plain And Reinforced Concrete Works</b>				
	900(1)c1	Structural Concrete, Class A	28.02	cu.m		
	902(1)a	Reinforcing Steel (Deformed), Grade 40	1,253.29	kgs		
	902(1)a	Formworks and Falseworks	29.70	sq.m		
	<b>Part C</b>	<b>Finishing And Other Civil Works</b>				
	1001(5)a	Catch Basin, Concrete	16.00	ea.		
	1001(8)	Sewer Line Works	1.00	l.s		
	1001(9)	Storm Drainage and Downspout	1.00	l.s		
	1001(11)	Septic Vault, Concrete/ CHB	1.00	l.s		
	1002(4)	Plumbing Fixtures	1.00	l.s		
	1002(54)	Cold Water Lines	1.00	l.s		
	1003(1)a1	Ceiling, 4.5mm thk, Metal Frame, Fiber Cement Board	189.00	sq.m		
	1009(1)b	Jalousie Windows, Wood	16.98	sq.m		
	1010(2)b	Doors, Wood Panel	17.28	sq.m		
	1014(1)b1	Prepainted Metal Sheets, above 0.427mm, Corrugated Type, Long Span	74.70	sq.m		
	1016(1)a	Waterproofing (Cement-base)	32.40	sq.m		
	1027(1)	Cement Floor Finish (Plain)	256.50	sq.m		
	1046(2)a2	Cement Plaster Finish	431.32	sq.m		
	1032(1)a	Painting Works, Masonry/ Concrete	431.32	sq.m		
	1032(1)b	Painting Works, Wood	189.00	sq.m		
	1032(1)c	Painting Works, Steel	83.40	sq.m		
	1047(2)a	Structural Steel (Trusses)	210.00	kgs		
	1047(2)b	Structural Steel (Purlins)	132.48	kgs		
	903(2)	CHB Non Load Bearing (including Reinforcing Steel)	144.62	sq.m		
	<b>Part D</b>	<b>Electrical Works</b>				
	1100	Conduits, Boxes & Fittings (Conduit Works/ Conduit Rough-in)	1.00	l.s		
	1101	Wires and Wiring Devices	1.00	l.s		
	1102(1)	Panel Board with Main Breaker	1.00	l.s		
	1103(1)	Lighting Fixtures and Lamps	1.00	l.s		
	<b>Part F</b>	<b>Other General Requirements</b>				
	SPL - 3	Bunkhouse (Rental Basis) and Other Facilities	1.00	lot		
	SPL - 4	Project Billboard/Signboard	1.00	units		
	SPL - 5	Occupational Construction Safety and Health	1.00	lot		
					<i>Subtotal</i>	

<b>5</b>	<b>Rehabilitation / Improvement of San Antonio Elementary School, Brgy. San Antonio, Tabaco City</b>				
	<b>Part A</b>	<b>Earthworks</b>			
	100(1)	Clearing & Grubbing	108.00	sq.m	
	803(1)a	Structure Excavation	106.04	cu.m	
	804(1)a	Embankment (from Common Excavation)	95.31	cu.m	
	804(1)b	Embankment (from Borrow)	113.85	cu.m	
	804(4)	Gravel Fill	3.07	cu.m	
	<b>Part B</b>	<b>Plain And Reinforced Concrete Works</b>			
	900(1)c1	Structural Concrete, Class A	47.53	cu.m	
	902(1)a	Reinforcing Steel (Deformed), Grade 40	8,488.47	kgs	
	902(1)a	Formworks and Falseworks	305.11	sq.m	
	<b>Part C</b>	<b>Finishing And Other Civil Works</b>			
	1001(5)b	Catch Basin (CHB)	7.00	each	
	1001(8)	Sewer Line Works	1.00	l.s	
	1001(9)	Storm Drainage and Downspout	1.00	l.s	
	1001(11)	Septic Vault	1.00	l.s	
	1002(4)	Plumbing Fixtures	1.00	l.s	
	1002(24)	Cold Water Lines	1.00	l.s	
	1003(1)a2	Ceiling, 4.5mm thk, Wood Frame, Marine Plywood	107.18	sq.m	
	1006(1)	Hollow Steel Door	5.04	sq.m	
	1009(1)b	Jalousie Windows, Wood	5.46	sq.m	
	1016(1)a	Waterproofing, Cement-base	88.02	sq.m	
	1018(1)	Glazed Tiles and Trims	22.24	sq.m	
	1018(2)	Unglazed Tiles	68.97	sq.m	
	1021(1)a	Cement Floor Finish	20.88	sq.m	
	1027(1)	Cement Plaster Finish	442.16	sq.m	
	1032(1)a	Painting Works, Masonry	442.16	sq.m	
	1032(1)b	Painting Works, Wood	107.18	sq.m	
	1046(2)a2	CHB Non Load Bearing (including Reinforcing Steel)	221.08	sq.m	
	1009(1)b	Railing	12.75	l.m	
	<b>Part D</b>	<b>Electrical Works</b>			
	1100	Conduits, Boxes & Fittings (Conduit Works/ Conduit Rough-in)	1.00	l.s	
	1101	Wires and Wiring Devices	1.00	l.s	
	1102(1)	Panel Board with Main Breaker	1.00	l.s	
	1103(1)	Lighting Fixtures and Lamps	1.00	l.s	
	<b>Part E</b>	<b>Mechanical Works</b>			
	1201(9)c	Overhead Tank, Polyethylene	3.00	set	
	<b>Part F</b>	<b>Other General Requirements</b>			
	SPL - 1	Bunkhouse (Rental Basis) and Other Facilities	1.00	lot	
	SPL - 2	Project Billboard/Signboard	1.00	units	
	SPL - 3	Occupational Construction Safety and Health	1.00	lot	
	<b>Subtotal</b>				
<b>6</b>	<b>Rehabilitation / Improvement of Fatima Elementary School, Brgy. Fatima, Tabaco City</b>				
	I	Demolition Of Existing Structures	107.68	sqm	
	II	Earthworks			
	Item A.	Structure Excavation	57.47	cu.m	
	Item B.	Embankment (From Structural Excavation)	45.35	cu.m	
	Item C.	Embankment (From Borrow)	29.37	cu.m	
	Item D.	Gravel Bedding	3.23	cu.m	
	III	Structural Concrete	53.33	cu.m	
	IV	Reinforcing Steel	7,063.30	kgs	
	V	Formworks & Falseworks	380.83	sq.m	
	VI	Masonry Works	112.32	sq.m	

	VII	Cement Plaster Finish	224.64	sq.m		
	VIII	Cement Floor Finish	83.84	sq.m		
	IX	Doors & Windows	16.56	sq.m		
	X	Electrical Works	1.00	lot		
	XI	Plumbing Works	1.00	lot		
	XII	Painting Works	299.84	sq.m		
	XIII	Waterproofing	137.70	sq.m		
	XIV	Removal Of Unsuitable Materials	96.91	sq.m		
	A	Bunkhouse (Rental Basis) and Other Facilities	1.00	lot		
	B	Project Billboard/Signboard	1.00	units		
	C	Occupational Construction Safety and Health	1.00	lot		
					<i>Subtotal</i>	
<b>7</b>	<b>Construction of Temporary Learning Space, Various Schools, Tabaco City</b>					
	<b>A</b>	<b>Main/Upland Barangay Schools</b>				
	<b>Part A</b>	<b>Earthworks</b>				
	100(1)	Clearing & Grubbing	576.00	sq.m		
	803(1)a	Structure Excavation	12.10	cu.m		
	<b>Part B</b>	<b>Plain And Reinforced Concrete Works</b>				
	900(1)c1	Structural Concrete, Class A	39.87	cu.m		
	902(1)a	Reinforcing Steel (Deformed), Grade 40	1,105.10	kgs		
	<b>Part C</b>	<b>Finishing And Other Civil Works</b>				
	SPL-1	Carpentry Works	1.00	lot		
	1013(1)	Corrugated Metal Roofing	576.00	sq.m		
	1021(1)a	Cement Floor Finish	576.00	sq.m		
		<b>B. Island Barangay School</b>				
	<b>Part A</b>	<b>Earthworks</b>				
	100(1)	Clearing & Grubbing	72.00	sq.m		
	803(1)a	Structure Excavation	1.51	cu.m		
	<b>Part B</b>	<b>Plain And Reinforced Concrete Works</b>				
	900(1)c1	Structural Concrete, Class A	4.98	cu.m		
	902(1)a	Reinforcing Steel (Deformed), Grade 40	140.45	kgs		
	<b>Part C</b>	<b>Finishing And Other Civil Works</b>				
	SPL-1	Carpentry Works	1.00	lot		
	1013(1)	Corrugated Metal Roofing	72.00	sq.m		
	1021(1)a	Cement Floor Finish	72.00	sq.m		
	<b>Part c</b>	<b>Other General Requirements</b>				
	SPL - 2	Bunkhouse (Rental Basis) and Other Facilities	1.00	lot		
	SPL - 3	Project Billboard/Signboard	8.00	units		
	SPL - 4	Occupational Construction Safety and Health	1.00	lot		
					<i>Subtotal</i>	
					<b>SUBTOTAL OF ITEM A</b>	
<b>B.</b>	<b>WATER SYSTEM</b>					
<b>8</b>	<b>Rehabilitation of Basagan Water System, Brgy. Basagan, Tabaco City</b>					
	I	Excavation Works	81.00	cu.m		
	II	Concrete Works	0.34	cu.m		
	III	Reinforcing Steel	33.24	kg		
	IV	Waterproofing	22.50	sq.m		
	V	Plumbing Works	1.00	l.s		
	VI	Formworks	2.25	sq.m.		
	VII	Bunkhouse (Rental Basis) and Other Facilities	1.00	l.s		
	VIII	Occupational Construction Safety and Health	1.00	l.s		
	IX	Fab/Installation of Billboard	1.00	unit		
					<i>Subtotal</i>	
<b>9</b>	<b>Rehabilitation of Bonot Water System, Brgy. Bonot, Tabaco City</b>					

	<b>A</b>	<b>MOB/DEMOB/Transport of Equipments from Tabaco City to Project Site</b>	1.00	l.s		
	<b>B</b>	<b>Deep Well Exploration</b>				
		a. Drilling of 152mm (6") dia pilot hole, including strata sampling for every meter of penetration	1.00	l.s		
		b. Reaming of 152 mm pilot hole to 300 mm diameter from ground level to final depth	51.00	mtr		
		c. Supply & Installation of 152 mm stainless wirewound screen casing	1.00	l.s		
		d. Supply & Installation of 110 mm diameter blank B.I. pipe and wirewound stainless screen casing	51.00	mtrs		
		e. Supply & Installation of #15 Peebles Gravel Pack	1.00	l.s		
		f. Treatment with Polyphospate Detergent	1.00	l.s		
		g. Well Development by Bailing & Surging	1.00	l.s		
		h. Well Development by Overpumping	1.00	l.s		
		i. Well Development by Air Lifting	1.00	l.s		
		j. Pumping Test	1.00	l.s		
		k. Supply & Install Clay Backfill	15.00	cu.m.		
		l. Sealing with Cement Grout	1.00	l.s		
		m. Disinfection of Well	1.00	l.s		
	<b>C.</b>	<b>Installation of Electrical and Plumbing Works</b>				
		A. Installation of Submersible Pump and Electrical Works	1.00	l.s		
	<b>D.</b>	<b>Bunkhouse (Rental Basis) and Other Facilities</b>	1.00	month		
	<b>E.</b>	<b>Occupational Construction Safety and Health</b>	1.00	month		
	<b>F.</b>	<b>Fabrication / Installation of Billboards</b>	1.00	unit		
		<b>Subtotal</b>				
<b>10</b>	<b>Rehabilitation of Buhian Water System, Brgy. Buhian, Tabaco City</b>					
	I	Excavation Works	72.00	cu.m		
	II	Concrete Works	3.60	cu.m		
	III	Reinforcing Steel	325.60	kg		
	IV	Waterproofing	62.50	sq.m		
	V	Plumbing Works	1.00	l.s		
	VI	Formworks	48.00	sq.m.		
	VII	Bunkhouse (Rental Basis) and Other Facilities	1.00	l.s		
	VIII	Occupational Construction Safety and Health	1.00	l.s		
	IX	Fab/Installation of Billboard	1.00	unit		
		<b>Subtotal</b>				
<b>11</b>	<b>Rehabilitation of Pinagbobong Water System, Brgy. Pinagbobong, Tabaco City</b>					
	I	Clearing & Grubbing	80.00	sq.m.		
	II	Excavation Works	341.10	cu.m		
	III	Concrete Works	5.46	cu.m		
	IV	Reinforcing Steel	914.94	kg		
	V	Plumbing Works	1.00	l.s		
	VI	Formworks	9.60	sq.m.		
	VII	Bunkhouse and Other Facilities	1.00	LS		
	VIII	Occupational Construction Safety and Health	1.00	LS		
	IX	Fab/Installation of Billboard	1.00	unit		

	<i>Subtotal</i>				
<b>12</b>	<b>Rehabilitation of Bognabong Water System, Brgy. Bognabong, Tabaco City</b>				
	I	Excavation Works	57.78	cu.m	
	II	Concrete Works	0.34	cu.m	
	III	Reinforcing Steel	33.24	kg	
	IV	Waterproofing	22.50	sq.m	
	V	Plumbing Works	1.00	lot	
	VI	Formworks	2.25	sq.m.	
	VII	Bunkhouse (Rental Basis) and Other Facilities	1.00	LS	
	VIII	Occupational Construction Safety and Health	1.00	LS	
	IX	Fab/Installation of Billboard	1.00	unit	
	<i>Subtotal</i>				
<b>13</b>	<b>Rehabilitation of Mariroc Water System, Brgy. Mariroc, Tabaco City</b>				
	I	Excavation Works	142.65	cu.m	
	II	Concrete Works	0.34	cu.m	
	III	Reinforcing Steel	33.24	kg	
	IV	Waterproofing	22.50	sq.m	
	V	Plumbing Works	1.00	l.s	
	VI	Formworks	2.25	sq.m.	
	VII	Bunkhouse (Rental Basis) and Other Facilities	1.00	l.s	
	VIII	Occupational Construction Safety and Health	1.00	l.s	
	IX	Fab/Installation of Billboard	1.00	unit	
	<i>Subtotal</i>				
<b>14</b>	<b>Rehab/Improvement of San Miguel Island (SMI) Water System, Brgy. Visita and Sitio Malictay, San Miguel Island, Tabaco City</b>				
	<b>A.</b>	<b>2 Units Of Deep Well Exploration</b>			
		<i>MOB/DEMOB/Transport of Equipment from Tabaco City Port to Project Site</i>	1.00	lot	
		A. Drilling of 152mm (6") dia pilot hole, including strata sampling for every meter of penetration	1.00	lot	
		B. Reaming of 152 mm pilot hole to 300 mm diameter from ground level to final depth	51.00	mtrs	
		C. Supply & Installation of 152 mm stainless wirewound screen casing	1.00	lot	
		D. Supply & Installation of 110 mm diameter blank B.I. pipe and wirewound stainless screen casing	51.00	mtrs	
		E. Supply & Installation of #15 Peebles Gravel Pack	1.00	lot	
		F. Treatment with Polyphospate Detergent	1.00	lot	
		G. Well Development by Bailing & Surging	1.00	lot	
		H. Well Development by Overpumping	1.00	lot	
		I. Well Development by Air Lifting	1.00	lot	
		J. Pumping Test	1.00	lot	
		K. Supply & Install Clay Backfill	15.00	cu.m.	
		L. Sealing with Cement Grout	1.00	lot	
		M. Disinfection of Well	1.00	lot	
	<b>B.</b>	<b>Construction Of 2 Unit 2m X 2m X 2m Overhead Tank</b>			
		A. Excavation Works	12.53	cu.m.	
		B. Concrete Works	14.52	cu.m.	

		C. Reinforcing Steel Bar	1,937.37	kg.		
		D. Waterproofing	80.00	sq.m.		
		E. Formworks	164.48	sq.m.		
	C.	<b>Plumbing And Other Electrical Works</b>				
		Pump Installation and Plumbing Works	1.00	lot		
	D	<b>Bunkhouse and Other Facilities</b>	1.00	LS		
	SPL 1	<b>Occupational Construction Safety and Health</b>	1.00	LS		
	SPL 2	<b>Fabrication / Installation of Billboards</b>	1.00	unit		
					<i>Subtotal</i>	
					<b>SUBTOTAL FOR ITEM B</b>	
	<b>C.</b>	<b>OTHER INFRASTRUCTURES</b>				
	<b>15</b>	<b>Rechanneling/Desilting of Tagas River, Divino Rostro-San Roque Section, (Downstream of Tagas Bridge), Tabaco City</b>				
	SPL-1	Clearing & Deepening of Waterways	14,226.39	cu.m		
	SPL-2	Removal & Disposal of Silted Materials	5,690.56	cu.m		
	SPL-3	Fab/Installation of Billboard	1.00	unit		
	SPL-4	Occupational Construction Safety and Health	1.00	l.s		
					<i>Subtotal</i>	
	<b>16</b>	<b>Rehabilitation of Irrigation System, Brgy. Guinobat, Tabaco City</b>				
	1	Clearing and Grubbing	930.00	sq.m		
	2	Temporary Diversion of Waterway	1.00	l.s		
	3	Demolition and Removal of Obstructions	651.00	sq.m		
	4	Reinforcing Steel	15,094.22	kgs		
	5	Structural Concrete	189.12	cu.m		
	6	Formworks	1,368.36	sq.m		
	7	Removal and Disposal of Unsuitable/Excavated Materials	465.00	cu.m		
	8	Bunkhouse (Rental Basis) and Other Facilities	1.00	l.s		
	9	Project Billboard/Signboard	1.00	unit		
	10	Occupational Construction Safety and Health	1.00	l.s		
					<i>Subtotal</i>	
	<b>17</b>	<b>Rehabilitation/Improvement of San Miguel Island Roadways, San Miguel Island, Tabaco City (Hacienda to Visita Section)</b>				
	A.	Clearing and Grubbing	1,500.00	sq.m.		
	B.	Structure Excavation	562.24	cu.m.		
	C.	Backfill	140.56	cu.m.		
	D.	Removal and Disposal of Unsuitable (Excavated Materials)	421.68	cum		
	E.	Structural Concrete	120.00	cu.m.		
	F.	Reinforced Steel	9,392.33	kgs		
	G.	Masonry Works	1,000.00	sq.m.		
	H.	RCPC 0.45 m Ø	4.00	ln.m.		
	I.	Bunkhouse And Other Facilities	1.00	l.s		
	J.	Occupational Safety And Health Program	1.00	l.s		
	K.	Fab/Installation Of Billboards	1.00	unit		
					<i>Subtotal</i>	
	<b>18</b>	<b>Rehabilitation / Improvement of Roadways at Tabaco South Elementary School, Tabaco City</b>				
	1	Clearing and Grubbing	371.25	sqm		
	2	Covered Canal	1.00	l.s		
	3	Subgrade Preparation	371.25	sqm		
	4	Aggregate Base Course	37.13	cu.m		
	5	PCCP (150mm thk)	371.25	sqm		
	6	Removal & Disposal of Excavated/Unsuitable Materials	55.69	cu.m		
	7	Bunkhouse (Rental Basis) and Other Facilities	1.00	l.s		

	8	Project Billboard/Signboard	1.00	unit		
	9	Occupational Construction Safety and Health	1.00	l.s		
	<i>Subtotal</i>					
	<b><i>SUBTOTAL FOR ITEM C</i></b>					
	<b><i>GRAND TOTAL</i></b>					

<b>Name of the Company/Bidder</b>	<b>Name of Authorized Representative</b>	<b>Signature of Authorized Representative</b>

***Section IX. Checklist of Technical and Financial Documents***

# Checklist of Technical and Financial Documents

## I. TECHNICAL COMPONENT ENVELOPE

### *Class “A” Documents*

#### Legal Documents

- (a) Valid PhilGEPS Registration Certificate (Platinum Membership) (all pages)

#### Technical Documents

- (b) Statement of the prospective bidder of all its ongoing government and private contracts, including contracts awarded but not yet started, if any, whether similar or not similar in nature and complexity to the contract to be bid; **and**
- (c) Statement of the bidder’s Single Largest Completed Contract (SLCC) similar to the contract to be bid, except under conditions provided under the rules; **and**
- (d) Special PCAB License in case of Joint Ventures; **and** registration for the type and cost of the contract to be bid; **and**
- (e) Original copy of Bid Security. If in the form of a Surety Bond, submit also a certification issued by the Insurance Commission; **or** Original copy of Notarized Bid Securing Declaration; **and**
- (f) Project Requirements, which shall include the following:
  - a. Organizational chart for the contract to be bid;
  - b. List of contractor’s key personnel (*e.g.*, Project Manager, Project Engineers, Materials Engineers, and Foremen), to be assigned to the contract to be bid, with their complete qualification and experience data;
  - c. List of contractor’s major equipment units, which are owned, leased, and/or under purchase agreements, supported by proof of ownership or certification of availability of equipment from the equipment lessor/vendor for the duration of the project, as the case may be; **and**
- (g) Original duly signed Omnibus Sworn Statement (OSS); **and** if applicable, Original Notarized Secretary’s Certificate in case of a corporation, partnership, or cooperative; or Original Special Power of Attorney of all members of the joint venture giving full power and authority to its officer to sign the OSS and do acts to represent the Bidder.

#### Financial Documents

- (h) The prospective bidder’s computation of Net Financial Contracting Capacity (NFCC).

### *Class “B” Documents*

- (i) If applicable, duly signed joint venture agreement (JVA) in accordance with RA No. 4566 and its IRR in case the joint venture is already in existence; **or** duly notarized statements from all the potential joint venture partners stating that they will enter into and abide by the provisions of the JVA in the instance that the bid is successful.

## II. FINANCIAL COMPONENT ENVELOPE

- (j) Original of duly signed and accomplished Financial Bid Form; **and**

### *Other documentary requirements under RA No. 9184*

- (k) Original of duly signed Bid Prices in the Bill of Quantities; **and**
- (l) Duly accomplished Detailed Estimates Form, including a summary sheet indicating the unit prices of construction materials, labor rates, and equipment rentals used in coming up with the Bid; **and**
- (m) Cash Flow by Quarter.

## **Annex A. Forms & Templates**



Name of the Procuring Entity: *LGU-Tabaco City*

Contract ID No. *025-07-2023-INFRA*

Name of the Project: *Construction/Improvement/Rehabilitation of Various Public Infrastructure Projects (Buildings, Water System and Other Infrastructure Projects)*

Project Location: *Various Barangays, Tabaco City*

**Statement of SINGLE LARGEST COMPLETED CONTRACT (SLCC) which is similar in nature**

Business Name : \_\_\_\_\_

Business Address : \_\_\_\_\_

Name of Contract	a. Owner Name b. Address c. Telephone Nos.	Nature of Work	Contractor's Role		a. Amount at Award b. Amount at Completion c. Duration	a. Date Awarded b. Contract Effectivity c. Date Completed
			Description	%		

**Note: This statement shall be supported with:**

- 1 Notice of Award and/ or Notice to Proceed;**
- 2 Owner's Certificate of Final Acceptance or Completion, or**
- 3 CPES Satisfactory Final Rating**

Submitted by : \_\_\_\_\_  
(Printed Name & Signature)

Designation : \_\_\_\_\_

Date : \_\_\_\_\_

Name of the Procuring Entity: **LGU-Tabaco City**

Contract ID No. **025-07-2023-INFRA**

Name of the Project: **Construction/Improvement/Rehabilitation of Various Public Infrastructure Projects (Buildings, Water System and Other Infrastructure Projects)**

Project Location: **Various Barangays, Tabaco City**

### **Net Financial Contracting Capacity (NFCC)**

- A. Summary of the Applicant Supplier's/Distributor's/Manufacturer's assets and liabilities on the basis of the attached income tax return and audited financial statement, stamped "RECEIVED" by the Bureau of Internal Revenue or BIR authorized collecting agent, for the immediately preceding year and a certified copy of Schedule of Fixed Assets particularly the list of construction equipment.

		Year 20__
1.	Total Assets	
2.	Current Assets	
3.	Total Liabilities	
4.	Current Liabilities	
5.	Net Worth (1-3)	
6.	Net Working Capital (2-4)	

- B. The Net Financial Contracting Capacity (NFCC) based on the above data is computed as follows:

NFCC = 15 (current asset – current liabilities) minus value of all outstanding works under ongoing contracts including awarded contracts yet to be started

NFCC = P \_\_\_\_\_

Herewith attached are certified true copies of the income tax return and audited financial statement: stamped "RECEIVED" by the BIR or BIR authorized collecting agent for the immediately preceding year.

Submitted by:

\_\_\_\_\_

Name of Supplier / Distributor / Manufacturer

\_\_\_\_\_

Signature of Authorized Representative

Date : \_\_\_\_\_

## **Bid Securing Declaration Form**

*[shall be submitted with the Bid if bidder opts to provide this form of bid security]*

---

REPUBLIC OF THE PHILIPPINES)  
CITY OF \_\_\_\_\_) S.S.

### **BID SECURING DECLARATION** **Project Identification No.: 025-07-2023-INFRA**

To: **The City Government of Tabaco**  
Tabaco City

I/We, the undersigned, declare that:

1. I/We understand that, according to your conditions, bids must be supported by a Bid Security, which may be in the form of a Bid Securing Declaration.
2. I/We accept that: (a) I/we will be automatically disqualified from bidding for any procurement contract with any procuring entity for a period of two (2) years upon receipt of your Blacklisting Order; and, (b) I/we will pay the applicable fine provided under Section 6 of the Guidelines on the Use of Bid Securing Declaration, within fifteen (15) days from receipt of the written demand by the procuring entity for the commission of acts resulting to the enforcement of the bid securing declaration under Sections 23.1(b), 34.2, 40.1 and 69.1, except 69.1(f), of the IRR of RA No. 9184; without prejudice to other legal action the government may undertake.
3. I/We understand that this Bid Securing Declaration shall cease to be valid on the following circumstances:
  - a. Upon expiration of the bid validity period, or any extension thereof pursuant to your request;
  - b. I am/we are declared ineligible or post-disqualified upon receipt of your notice to such effect, and (i) I/we failed to timely file a request for reconsideration or (ii) I/we filed a waiver to avail of said right; and
  - c. I am/we are declared the bidder with the Lowest Calculated Responsive Bid, and I/we have furnished the performance security and signed the Contract.

IN WITNESS WHEREOF, I/We have hereunto set my/our hand/s this \_\_\_\_ day of [month] [year] at [place of execution].

*[Insert NAME OF BIDDER OR ITS AUTHORIZED  
REPRESENTATIVE]*

*[Insert signatory's legal capacity]*

Affiant

**[Jurat]**

*[Format shall be based on the latest Rules on Notarial Practice]*

Name of the Procuring Entity: **LGU-Tabaco City**

Contract ID No. **025-07-2023-INFRA**

Name of the Project: **Construction/Improvement/Rehabilitation of Various Public Infrastructure Projects (Buildings, Water System and Other Infrastructure Projects)**

Project Location: **Various Barangays, Tabaco City**

**QUALIFICATION OF KEY PERSONNEL PROPOSED TO BE ASSIGNED TO THE CONTRACT**

Business Name : \_\_\_\_\_

Business Address: \_\_\_\_\_

		Project Manager	Project Engineer	Materials Engineer	Construction Foreman	Safety Officer	First Aider	Other positions deemed required by the Applicant for this project
1	Name							
2	Address							
3	Date of Birth							
4	Employed Since							
5	Experience							
6	Previous Employment							
7	Education							
8	PRC License							

Note: Attach individual resume and PRC License of the (professional) personnel

Submitted by : \_\_\_\_\_  
(Printed Name & Signature)

Designation : \_\_\_\_\_

Date : \_\_\_\_\_

Name of the Procuring Entity: **LGU-Tabaco City**

Contract ID No. **025-07-2023-INFRA**

Name of the Project: **Construction/Improvement/Rehabilitation of Various Public Infrastructure Projects (Buildings, Water System and Other Infrastructure Projects)**

Project Location: **Various Barangays, Tabaco City**

**List of Equipment, Owned or Leased and/or under Purchase Agreements, Pledged to the Proposed Contract**

Business Name : \_\_\_\_\_

Business Address: \_\_\_\_\_

Description	Quantity	Model/ Year	Capacity / Performance / Size	Plate No.	Motor No. / Body No.	Location	Condition	Proof of Ownership / Lessor or Vendor
<u>A. Owned</u>								
i.								
ii.								
iii.								
iv.								
v.								
<u>B. Leased</u>								
i.								
ii.								
iii.								
iv.								
v.								
<u>C. Under Purchase Agreements</u>								
i.								
ii.								
iii.								
iv.								

Submitted by : \_\_\_\_\_

(Printed Name & Signature)

Designation : \_\_\_\_\_

Date : \_\_\_\_\_

**Omnibus Sworn Statement (Revised)**  
*[shall be submitted with the Bid]*

---

REPUBLIC OF THE PHILIPPINES )  
CITY/MUNICIPALITY OF \_\_\_\_\_ ) S.S.

**AFFIDAVIT**

I, [Name of Affiant], of legal age, [Civil Status], [Nationality], and residing at [Address of Affiant], after having been duly sworn in accordance with law, do hereby depose and state that:

1. *[Select one, delete the other:]*

*[If a sole proprietorship:]* I am the sole proprietor or authorized representative of [Name of Bidder] with office address at [address of Bidder];

*[If a partnership, corporation, cooperative, or joint venture:]* I am the duly authorized and designated representative of [Name of Bidder] with office address at [address of Bidder];

2. *[Select one, delete the other:]*

*[If a sole proprietorship:]* As the owner and sole proprietor, or authorized representative of [Name of Bidder], I have full power and authority to do, execute and perform any and all acts necessary to participate, submit the bid, and to sign and execute the ensuing contract for [Name of the Project] of the [Name of the Procuring Entity], as shown in the attached duly notarized Special Power of Attorney;

*[If a partnership, corporation, cooperative, or joint venture:]* I am granted full power and authority to do, execute and perform any and all acts necessary to participate, submit the bid, and to sign and execute the ensuing contract for [Name of the Project] of the [Name of the Procuring Entity], as shown in the attached [state title of attached document showing proof of authorization (e.g., duly notarized Secretary's Certificate, Board/Partnership Resolution, or Special Power of Attorney, whichever is applicable)];

3. [Name of Bidder] is not "blacklisted" or barred from bidding by the Government of the Philippines or any of its agencies, offices, corporations, or Local Government Units, foreign government/foreign or international financing institution whose blacklisting rules have been recognized by the Government Procurement Policy Board, by itself or by relation, membership, association, affiliation, or controlling interest with another blacklisted person or entity as defined and provided for in the Uniform Guidelines on Blacklisting;

4. Each of the documents submitted in satisfaction of the bidding requirements is an authentic copy of the original, complete, and all statements and information provided therein are true and correct;

5. [Name of Bidder] is authorizing the Head of the Procuring Entity or its duly authorized representative(s) to verify all the documents submitted;

6. *[Select one, delete the rest:]*

*[If a sole proprietorship:]* The owner or sole proprietor is not related to the Head of the Procuring Entity, members of the Bids and Awards Committee (BAC), the Technical Working Group, and the BAC Secretariat, the head of the Project Management Office or the end-user unit, and the project consultants by consanguinity or affinity up to the third civil degree;

*[If a partnership or cooperative:]* None of the officers and members of [Name of Bidder] is related to the Head of the Procuring Entity, members of the Bids and Awards Committee (BAC), the Technical Working Group, and the BAC Secretariat, the head of the Project Management Office or the end-user unit, and the project consultants by consanguinity or affinity up to the third civil degree;

*[If a corporation or joint venture:]* None of the officers, directors, and controlling stockholders of [Name of Bidder] is related to the Head of the Procuring Entity, members of the Bids and Awards Committee (BAC),

the Technical Working Group, and the BAC Secretariat, the head of the Project Management Office or the end-user unit, and the project consultants by consanguinity or affinity up to the third civil degree;

7. *[Name of Bidder]* complies with existing labor laws and standards; and
8. *[Name of Bidder]* is aware of and has undertaken the responsibilities as a Bidder in compliance with the Philippine Bidding Documents, which includes:
  - a. Carefully examining all of the Bidding Documents;
  - b. Acknowledging all conditions, local or otherwise, affecting the implementation of the Contract;
  - c. Making an estimate of the facilities available and needed for the contract to be bid, if any; and
  - d. Inquiring or securing Supplemental/Bid Bulletin(s) issued for the *[Name of the Project]*.
9. *[Name of Bidder]* did not give or pay directly or indirectly, any commission, amount, fee, or any form of consideration, pecuniary or otherwise, to any person or official, personnel or representative of the government in relation to any procurement project or activity.
10. In case advance payment was made or given, failure to perform or deliver any of the obligations and undertakings in the contract shall be sufficient grounds to constitute criminal liability for Swindling (Estafa) or the commission of fraud with unfaithfulness or abuse of confidence through misappropriating or converting any payment received by a person or entity under an obligation involving the duty to deliver certain goods or services, to the prejudice of the public and the government of the Philippines pursuant to Article 315 of Act No. 3815 s. 1930, as amended, or the Revised Penal Code.

**IN WITNESS WHEREOF**, I have hereunto set my hand this \_\_\_ day of \_\_\_, 20\_\_ at \_\_\_\_\_, Philippines.

*[Insert NAME OF BIDDER OR ITS AUTHORIZED REPRESENTATIVE]*

*[Insert signatory's legal capacity]*

Affiant

**[Jurat]**

*[Format shall be based on the latest Rules on Notarial Practice]*

## Bid Form for the Procurement of Infrastructure Projects

---

### BID FORM

Date : \_\_\_\_\_  
Project Identification No.: 025-07-2023-INFRA.

To: *[name and address of Procuring Entity]*

Having examined the Philippine Bidding Documents (PBDs) including the Supplemental or Bid Bulletin Numbers *[insert numbers]*, the receipt of which is hereby duly acknowledged, we, the undersigned, declare that:

- a. We have no reservation to the PBDs, including the Supplemental or Bid Bulletins, for the Procurement Project: *[insert name of contract]*;
- b. We offer to execute the Works for this Contract in accordance with the PBDs;
- c. The total price of our Bid in words and figures, excluding any discounts offered below is: *[insert information]*;
- d. The discounts offered and the methodology for their application are: *[insert information]*;
- e. The total bid price includes the cost of all taxes, such as, but not limited to: *[specify the applicable taxes, e.g. (i) value added tax (VAT), (ii) income tax, (iii) local taxes, and (iv) other fiscal levies and duties]*, which are itemized herein and reflected in the detailed estimates,
- f. Our Bid shall be valid within the a period stated in the PBDs, and it shall remain binding upon us at any time before the expiration of that period;
- g. If our Bid is accepted, we commit to obtain a Performance Security in the amount of *[insert percentage amount]* percent of the Contract Price for the due performance of the Contract, or a Performance Securing Declaration in lieu of the allowable forms of Performance Security, subject to the terms and conditions of issued GPPB guidelines<sup>1</sup> for this purpose;
- h. We are not participating, as Bidders, in more than one Bid in this bidding process, other than alternative offers in accordance with the Bidding Documents;
- i. We understand that this Bid, together with your written acceptance thereof included in your notification of award, shall constitute a binding contract between us, until a formal Contract is prepared and executed; and
- j. We understand that you are not bound to accept the Lowest Calculated Bid or any other Bid that you may receive.
- k. We likewise certify/confirm that the undersigned, is the duly authorized representative of the bidder, and granted full power and authority to do, execute and perform any and all acts necessary to participate, submit the bid, and to sign and execute the ensuing contract for the [Name of Project] of the [Name of the Procuring Entity].
- l. We acknowledge that failure to sign each and every page of this Bid Form, including the Bill of Quantities, shall be a ground for the rejection of our bid.

Name: \_\_\_\_\_

Legal Capacity: \_\_\_\_\_

Signature: \_\_\_\_\_

Duly authorized to sign the Bid for and behalf of: \_\_\_\_\_

Date: \_\_\_\_\_

---

<sup>1</sup> currently based on GPPB Resolution No. 09-2020

Name of the Procuring Entity: *LGU-Tabaco City*

Contract ID No. *025-07-2023-INFRA*

Name of the Project: *Construction/Improvement/Rehabilitation of Various Public Infrastructure Projects (Buildings, Water System and Other Infrastructure Projects)*

Project Location: *Various Barangays, Tabaco City*

## BILL OF QUANTITIES

Item No.	Description of Work to be Done	Qty	Unit	Unit Price (Php)	Total Amount (Php)
<b>A.</b>	<b>BUILDING</b>				
<b>1</b>	<b>Rehabilitation of San Miguel Island Multi-Purpose Hall at Visita, San Miguel Island, Tabaco City</b>				
	A.	Tile Works	637.00	sq.m	
	B.	Electrical Works			
	1	Solar Panel with inverter, battery and other devices	1.00	lot	
	2	Generator Set	1.00	lot	
	C.	Fire Protection Sprinkler System (AFSS)	1.00	lot	
	D.	Amenities	1.00	lot	
	E.	Provision of Bunkhouse (Rental Basis) & Other Facilities	1.00	lot	
	F.	Occupational Safety and Health Program	1.00	lot	
	G.	Project Billboard/Signboard	1.00	unit	
	<i>Subtotal</i>				
<b>2</b>	<b>Construction of Child Development Center at Brgy. Bangkilingan, Tabaco City</b>				
	<b>A.</b>	<b>Construction of the Main Building</b>			
	<b>Part A</b>	<b>Earthworks</b>			
	1700	Clearing and Grubbing	112.80	sq.m.	
	803(1)a	Structure Excavation (Common Soil)	52.60	cu.m.	
	804(1)a	Embankment (From Structure Excavation)	40.56	cu.m.	
	804(1)b	Embankment (From Borrow)	38.63	cu.m.	
	804(4)	Gravel Fill	13.52	cu.m.	
	<b>Part B</b>	<b>Plain And Reinforced Concrete Works</b>			
	900(1)c1	Structural Concrete (Class A) 28 days	45.47	cu.m.	
	902(1)a	Reinforcing Steel (Deformed, Grade 40)	8,896.95	kgs	
	903(2)	Formworks and False Works	118.00	sq.m.	
	<b>Part C</b>	<b>Finishing And Other Civil Works</b>			
	1000(1)	Soil Poisoning	118.00	liters	
	1001(5)a	Catch Basin (Concrete)	7.00	each	
	1001(5)b	Septic Tank	1.00	lot	
	1001(8)	Sewer Line Works	1.00	lot	
	1001(9)	Storm Drainage and Downspout	1.00	lot	
	1002(4)	Plumbing Works	1.00	lot	
	1003(1)b1	Ceiling (4.5mm, Metal Frame, Fiber Cement Board)	70.19	sq.m.	
	1005(1)	Steel Casement Window	14.77	sq.m.	
	1010(2)a	Doors (Wooden Panel / Flush)	5.88	sq.m.	
	1005(2)	Doors and Window Screen	18.97	sq.m.	
	1016(1)a	Waterproofing (Cement-Base)	111.69	sq.m.	
	1018(2)	Unglazed Tiles	5.45	sq.m.	
	1018(5)	Glazed Tiles	21.14	sq.m.	
	1018(8)	Tactiles (PWD Ramp)	8.76	sq.m.	
	1027(1)	Cement Plaster Finish	353.94	sq.m.	
	1027(2)	Cement Floor Finish	66.18	sq.m.	
	1046(2)a1	CHB Non Load Bearing, 100mm (Incl. RSB)	6.49	sq.m.	
	1046(2)a2	CHB Non Load Bearing, 150mm (Incl. RSB)	137.81	sq.m.	

	1051	Railings	10.90	LM		
	1003	Carpentry Works	37.74	sq.m.		
	1032	Painting Works	455.25	sq.m.		
	SPL 1	Fabrication & Installation of Signages & Logo	1.00	lot		
	SPL 3	Handwash Area	1.00	lot		
	<b>Part D</b>	<b>Electrical Works</b>				
	1100(10)	Conduits, Boxes & Fittings	1.00	lot		
	1101	Wires and Wiring Devices	1.00	lot		
	1102(1)	Panelboard with Main & Brain Breakers	1.00	lot		
	1103(1)	Lighting Fixtures & Lamps	1.00	lot		
	1109(1)	Grounding System	1.00	lot		
	<b>Part D</b>	<b>Other General Requirements</b>				
	SPL 3	Bunkhouse and Other Facilities	1.00	lot		
	SPL 4	Project Billboard/Signboard	1.00	lot		
	B.7	Occupational Construction Safety and Health	1.00	lot		
					<i>Subtotal</i>	
<b>3</b>	<b>Construction of Child Development Center at Brgy. Sua-Igot, Tabaco City</b>					
	<b>A</b>	<b>Construction Of The Main Building</b>				
	<b>Part A</b>	<b>Earthworks</b>				
	1700	Clearing and Grubbing	112.80	sq.m.		
	803(1)a	Structure Excavation (Common Soil)	52.60	cu.m.		
	804(1)a	Embankment (From Structure Excavation)	40.56	cu.m.		
	804(1)b	Embankment (From Borrow)	120.19	cu.m.		
	804(4)	Gravel Fill	13.52	cu.m.		
	<b>Part B</b>	<b>Plain And Reinforced Concrete Works</b>				
	900(1)c1	Structural Concrete (Class A) 28 days	45.47	cu.m.		
	902(1)a	Reinforcing Steel (Deformed, Grade 40)	8,896.95	kgs		
	903(2)	Formworks and False Works	118.00	sq.m.		
	<b>Part C</b>	<b>Finishing And Other Civil Works</b>				
	1000(1)	Soil Poisoning	118.00	liters		
	1001(5)a	Catch Basin (Concrete)	7.00	each		
	1001(5)b	Septic Tank	1.00	lot		
	1001(8)	Sewer Line Works	1.00	lot		
	1001(9)	Storm Drainage and Downspout	1.00	lot		
	1002(4)	Plumbing Works	1.00	lot		
	1003(1)b1	Ceiling (4.5mm, Metal Frame, Fiber Cement Board)	70.19	sq.m.		
	1005(1)	Steel Casement Window	14.77	sq.m.		
	1010(2)a	Doors (Wooden Panel / Flush)	5.88	sq.m.		
	1005(2)	Doors and Window Screen	18.97	sq.m.		
	1016(1)a	Waterproofing (Cement-Base)	111.69	sq.m.		
	1018(2)	Unglazed Tiles	5.45	sq.m.		
	1018(5)	Glazed Tiles	21.14	sq.m.		
	1018(8)	Tactiles (PWD Ramp)	8.76	sq.m.		
	1027(1)	Cement Plaster Finish	353.94	sq.m.		
	1027(2)	Cement Floor Finish	66.18	sq.m.		
	1046(2)a1	CHB Non Load Bearing, 100mm (Incl. RSB)	6.49	sq.m.		
	1046(2)a2	CHB Non Load Bearing, 150mm (Incl. RSB)	137.81	sq.m.		
	1051	Railings	10.90	LM		
	1003	Carpentry Works	37.74	sq.m.		
	1032	Painting Works	455.25	sq.m.		
	SPL 1	Fabrication & Installation of Signages & Logo	1.00	lot		
	SPL 3	Handwash Area	1.00	lot		
	<b>Part D</b>	<b>Electrical Works</b>				

	1100(10)	Conduits, Boxes & Fittings	1.00	lot		
	1101	Wires and Wiring Devices	1.00	lot		
	1102(1)	Panelboard with Main & Brain Breakers	1.00	lot		
	1103(1)	Lighting Fixtures & Lamps	1.00	lot		
	1109(1)	Grounding System	1.00	lot		
	<b>Part D</b>	<b>Other General Requirements</b>				
	SPL 3	Bunkhouse and Other Facilities	1.00	lot		
	SPL 4	Project Billboard/Signboard	1.00	lot		
	B.7	Occupational Construction Safety and Health	1.00	lot		
	<i>Subtotal</i>					
<b>4</b>	<b>Rehabilitation / Improvement of Quinastillojan Elementary School, Quinastillojan, Tabaco City</b>					
	<b>Part A</b>	<b>Earthworks</b>				
	100(1)	Clearing & Grubbing	108.00	sq.m		
	803(1)a	Structure Excavation	1.18	cu.m		
	804(1)b	Embankment (from Borrow)	23.63	cu.m		
	<b>Part B</b>	<b>Plain And Reinforced Concrete Works</b>				
	900(1)c1	Structural Concrete, Class A	28.02	cu.m		
	902(1)a	Reinforcing Steel (Deformed), Grade 40	1,253.29	kgs		
	902(1)a	Formworks and Falseworks	29.70	sq.m		
	<b>Part C</b>	<b>Finishing And Other Civil Works</b>				
	1001(5)a	Catch Basin, Concrete	16.00	ea.		
	1001(8)	Sewer Line Works	1.00	l.s		
	1001(9)	Storm Drainage and Downspout	1.00	l.s		
	1001(11)	Septic Vault, Concrete/ CHB	1.00	l.s		
	1002(4)	Plumbing Fixtures	1.00	l.s		
	1002(54)	Cold Water Lines	1.00	l.s		
	1003(1)a1	Ceiling, 4.5mm thk, Metal Frame, Fiber Cement Board	189.00	sq.m		
	1009(1)b	Jalousie Windows, Wood	16.98	sq.m		
	1010(2)b	Doors, Wood Panel	17.28	sq.m		
	1014(1)b1	Prepainted Metal Sheets, above 0.427mm, Corrugated Type, Long Span	74.70	sq.m		
	1016(1)a	Waterproofing (Cement-base)	32.40	sq.m		
	1027(1)	Cement Floor Finish (Plain)	256.50	sq.m		
	1046(2)a2	Cement Plaster Finish	431.32	sq.m		
	1032(1)a	Painting Works, Masonry/ Concrete	431.32	sq.m		
	1032(1)b	Painting Works, Wood	189.00	sq.m		
	1032(1)c	Painting Works, Steel	83.40	sq.m		
	1047(2)a	Structural Steel (Trusses)	210.00	kgs		
	1047(2)b	Structural Steel (Purlins)	132.48	kgs		
	903(2)	CHB Non Load Bearing (including Reinforcing Steel)	144.62	sq.m		
	<b>Part D</b>	<b>Electrical Works</b>				
	1100	Conduits, Boxes & Fittings (Conduit Works/ Conduit Rough-in)	1.00	l.s		
	1101	Wires and Wiring Devices	1.00	l.s		
	1102(1)	Panel Board with Main Breaker	1.00	l.s		
	1103(1)	Lighting Fixtures and Lamps	1.00	l.s		
	<b>Part F</b>	<b>Other General Requirements</b>				
	SPL - 3	Bunkhouse (Rental Basis) and Other Facilities	1.00	lot		
	SPL - 4	Project Billboard/Signboard	1.00	units		
	SPL - 5	Occupational Construction Safety and Health	1.00	lot		
	<i>Subtotal</i>					
<b>5</b>	<b>Rehabilitation / Improvement of San Antonio Elementary School, Brgy. San Antonio, Tabaco City</b>					
	<b>Part A</b>	<b>Earthworks</b>				
	100(1)	Clearing & Grubbing	108.00	sq.m		

	803(1)a	Structure Excavation	106.04	cu.m		
	804(1)a	Embankment (from Common Excavation)	95.31	cu.m		
	804(1)b	Embankment (from Borrow)	113.85	cu.m		
	804(4)	Gravel Fill	3.07	cu.m		
	<b>Part B</b>	<b>Plain And Reinforced Concrete Works</b>				
	900(1)c1	Structural Concrete, Class A	47.53	cu.m		
	902(1)a	Reinforcing Steel (Deformed), Grade 40	8,488.47	kgs		
	902(1)a	Formworks and Falseworks	305.11	sq.m		
	<b>Part C</b>	<b>Finishing And Other Civil Works</b>				
	1001(5)b	Catch Basin (CHB)	7.00	each		
	1001(8)	Sewer Line Works	1.00	l.s		
	1001(9)	Storm Drainage and Downspout	1.00	l.s		
	1001(11)	Septic Vault	1.00	l.s		
	1002(4)	Plumbing Fixtures	1.00	l.s		
	1002(24)	Cold Water Lines	1.00	l.s		
	1003(1)a2	Ceiling, 4.5mm thk, Wood Frame, Marine Plywood	107.18	sq.m		
	1006(1)	Hollow Steel Door	5.04	sq.m		
	1009(1)b	Jalousie Windows, Wood	5.46	sq.m		
	1016(1)a	Waterproofing, Cement-base	88.02	sq.m		
	1018(1)	Glazed Tiles and Trims	22.24	sq.m		
	1018(2)	Unglazed Tiles	68.97	sq.m		
	1021(1)a	Cement Floor Finish	20.88	sq.m		
	1027(1)	Cement Plaster Finish	442.16	sq.m		
	1032(1)a	Painting Works, Masonry	442.16	sq.m		
	1032(1)b	Painting Works, Wood	107.18	sq.m		
	1046(2)a2	CHB Non Load Bearing (including Reinforcing Steel)	221.08	sq.m		
	1009(1)b	Railing	12.75	l.m		
	<b>Part D</b>	<b>Electrical Works</b>				
	1100	Conduits, Boxes & Fittings (Conduit Works/ Conduit Rough-in)	1.00	l.s		
	1101	Wires and Wiring Devices	1.00	l.s		
	1102(1)	Panel Board with Main Breaker	1.00	l.s		
	1103(1)	Lighting Fixtures and Lamps	1.00	l.s		
	<b>Part E</b>	<b>Mechanical Works</b>				
	1201(9)c	Overhead Tank, Polyethylene	3.00	set		
	<b>Part F</b>	<b>Other General Requirements</b>				
	SPL - 1	Bunkhouse (Rental Basis) and Other Facilities	1.00	lot		
	SPL - 2	Project Billboard/Signboard	1.00	units		
	SPL - 3	Occupational Construction Safety and Health	1.00	lot		
						<i>Subtotal</i>
<b>6</b>	<b>Rehabilitation / Improvement of Fatima Elementary School, Brgy. Fatima, Tabaco City</b>					
	I	Demolition Of Existing Structures	107.68	sqm		
	II	Earthworks				
	Item A.	Structure Excavation	57.47	cu.m		
	Item B.	Embankment (From Structural Excavation)	45.35	cu.m		
	Item C.	Embankment (From Borrow)	29.37	cu.m		
	Item D.	Gravel Bedding	3.23	cu.m		
	III	Structural Concrete	53.33	cu.m		
	IV	Reinforcing Steel	7,063.30	kgs		
	V	Formworks & Falseworks	380.83	sq.m		
	VI	Masonry Works	112.32	sq.m		
	VII	Cement Plaster Finish	224.64	sq.m		
	VIII	Cement Floor Finish	83.84	sq.m		
	IX	Doors & Windows	16.56	sq.m		
	X	Electrical Works	1.00	lot		

	XI	Plumbing Works	1.00	lot		
	XII	Painting Works	299.84	sq.m		
	XIII	Waterproofing	137.70	sq.m		
	XIV	Removal Of Unsuitable Materials	96.91	sq.m		
	A	Bunkhouse (Rental Basis) and Other Facilities	1.00	lot		
	B	Project Billboard/Signboard	1.00	units		
	C	Occupational Construction Safety and Health	1.00	lot		
					<i>Subtotal</i>	
<b>7</b>	<b>Construction of Temporary Learning Space, Various Schools, Tabaco City</b>					
	<b>A</b>	<b>Main/Upland Barangay Schools</b>				
	<b>Part A</b>	<b>Earthworks</b>				
	100(1)	Clearing & Grubbing	576.00	sq.m		
	803(1)a	Structure Excavation	12.10	cu.m		
	<b>Part B</b>	<b>Plain And Reinforced Concrete Works</b>				
	900(1)c1	Structural Concrete, Class A	39.87	cu.m		
	902(1)a	Reinforcing Steel (Deformed), Grade 40	1,105.10	kgs		
	<b>Part C</b>	<b>Finishing And Other Civil Works</b>				
	SPL-1	Carpentry Works	1.00	lot		
	1013(1)	Corrugated Metal Roofing	576.00	sq.m		
	1021(1)a	Cement Floor Finish	576.00	sq.m		
		<b>B. Island Barangay School</b>				
	<b>Part A</b>	<b>Earthworks</b>				
	100(1)	Clearing & Grubbing	72.00	sq.m		
	803(1)a	Structure Excavation	1.51	cu.m		
	<b>Part B</b>	<b>Plain And Reinforced Concrete Works</b>				
	900(1)c1	Structural Concrete, Class A	4.98	cu.m		
	902(1)a	Reinforcing Steel (Deformed), Grade 40	140.45	kgs		
	<b>Part C</b>	<b>Finishing And Other Civil Works</b>				
	SPL-1	Carpentry Works	1.00	lot		
	1013(1)	Corrugated Metal Roofing	72.00	sq.m		
	1021(1)a	Cement Floor Finish	72.00	sq.m		
	<b>Part c</b>	<b>Other General Requirements</b>				
	SPL - 2	Bunkhouse (Rental Basis) and Other Facilities	1.00	lot		
	SPL - 3	Project Billboard/Signboard	8.00	units		
	SPL - 4	Occupational Construction Safety and Health	1.00	lot		
					<i>Subtotal</i>	
					<b>SUBTOTAL OF ITEM A</b>	
<b>B.</b>	<b>WATER SYSTEM</b>					
<b>8</b>	<b>Rehabilitation of Basagan Water System, Brgy. Basagan, Tabaco City</b>					
	I	Excavation Works	81.00	cu.m		
	II	Concrete Works	0.34	cu.m		
	III	Reinforcing Steel	33.24	kg		
	IV	Waterproofing	22.50	sq.m		
	V	Plumbing Works	1.00	l.s		
	VI	Formworks	2.25	sq.m.		
	VII	Bunkhouse (Rental Basis) and Other Facilities	1.00	l.s		
	VIII	Occupational Construction Safety and Health	1.00	l.s		
	IX	Fab/Installation of Billboard	1.00	unit		
					<i>Subtotal</i>	
<b>9</b>	<b>Rehabilitation of Bonot Water System, Brgy. Bonot, Tabaco City</b>					
	<b>A</b>	<b>MOB/DEMOB/Transport of Equipments from Tabaco City to Project Site</b>		1.00	l.s	
	<b>B</b>	<b>Deep Well Exploration</b>				

		a. Drilling of 152mm (6") dia pilot hole, including strata sampling for every meter of penetration	1.00	l.s		
		b. Reaming of 152 mm pilot hole to 300 mm diameter from ground level to final depth	51.00	mtr		
		c. Supply & Installation of 152 mm stainless wirewound screen casing	1.00	l.s		
		d. Supply & Installation of 110 mm diameter blank B.I. pipe and wirewound stainless screen casing	51.00	mtrs		
		e. Supply & Installation of #15 Peebles Gravel Pack	1.00	l.s		
		f. Treatment with Polyphospate Detergent	1.00	l.s		
		g. Well Development by Bailing & Surging	1.00	l.s		
		h. Well Development by Overpumping	1.00	l.s		
		i. Well Development by Air Lifting	1.00	l.s		
		j. Pumping Test	1.00	l.s		
		k. Supply & Install Clay Backfill	15.00	cu.m.		
		l. Sealing with Cement Grout	1.00	l.s		
		m. Disinfection of Well	1.00	l.s		
	<b>C.</b>	<b><i>Installation of Electrical and Plumbing Works</i></b>				
		<i>A. Installation of Submersible Pump and Electrical Works</i>	1.00	l.s		
	<b>D.</b>	<b><i>Bunkhouse (Rental Basis) and Other Facilities</i></b>	1.00	month		
	<b>E.</b>	<b><i>Occupational Construction Safety and Health</i></b>	1.00	month		
	<b>F.</b>	<b><i>Fabrication / Installation of Billboards</i></b>	1.00	unit		
		<b>Subtotal</b>				
<b>10</b>	<b>Rehabilitation of Buhian Water System, Brgy. Buhian, Tabaco City</b>					
	I	Excavation Works	72.00	cu.m		
	II	Concrete Works	3.60	cu.m		
	III	Reinforcing Steel	325.60	kg		
	IV	Waterproofing	62.50	sq.m		
	V	Plumbing Works	1.00	l.s		
	VI	Formworks	48.00	sq.m.		
	VII	Bunkhouse (Rental Basis) and Other Facilities	1.00	l.s		
	VIII	Occupational Construction Safety and Health	1.00	l.s		
	IX	Fab/Installation of Billboard	1.00	unit		
		<b>Subtotal</b>				
<b>11</b>	<b>Rehabilitation of Pinagbobong Water System, Brgy. Pinagbobong, Tabaco City</b>					
	I	Clearing & Grubbing	80.00	sq.m.		
	II	Excavation Works	341.10	cu.m		
	III	Concrete Works	5.46	cu.m		
	IV	Reinforcing Steel	914.94	kg		
	V	Plumbing Works	1.00	l.s		
	VI	Formworks	9.60	sq.m.		
	VII	Bunkhouse and Other Facilities	1.00	LS		
	VIII	Occupational Construction Safety and Health	1.00	LS		
	IX	Fab/Installation of Billboard	1.00	unit		
		<b>Subtotal</b>				
<b>12</b>	<b>Rehabilitation of Bognabong Water System, Brgy. Bognabong, Tabaco City</b>					
	I	Excavation Works	57.78	cu.m		

	II	Concrete Works	0.34	cu.m		
	III	Reinforcing Steel	33.24	kg		
	IV	Waterproofing	22.50	sq.m		
	V	Plumbing Works	1.00	lot		
	VI	Formworks	2.25	sq.m.		
	VII	Bunkhouse (Rental Basis) and Other Facilities	1.00	LS		
	VIII	Occupational Construction Safety and Health	1.00	LS		
	IX	Fab/Installation of Billboard	1.00	unit		
	<b>Subtotal</b>					
<b>13</b>	<b>Rehabilitation of Mariroc Water System, Brgy. Mariroc, Tabaco City</b>					
	I	Excavation Works	142.65	cu.m		
	II	Concrete Works	0.34	cu.m		
	III	Reinforcing Steel	33.24	kg		
	IV	Waterproofing	22.50	sq.m		
	V	Plumbing Works	1.00	l.s		
	VI	Formworks	2.25	sq.m.		
	VII	Bunkhouse (Rental Basis) and Other Facilities	1.00	l.s		
	VIII	Occupational Construction Safety and Health	1.00	l.s		
	IX	Fab/Installation of Billboard	1.00	unit		
	<b>Subtotal</b>					
<b>14</b>	<b>Rehab/Improvement of San Miguel Island (SMI) Water System, Brgy. Visita and Sitio Malictay, San Miguel Island, Tabaco City</b>					
	A.	<b>2 Units Of Deep Well Exploration</b>				
		<i>MOB/DEMOB/Transport of Equipment from Tabaco City Port to Project Site</i>	1.00	lot		
		A. Drilling of 152mm (6") dia pilot hole, including strata sampling for every meter of penetration	1.00	lot		
		B. Reaming of 152 mm pilot hole to 300 mm diameter from ground level to final depth	51.00	mtrs		
		C. Supply & Installation of 152 mm stainless wirewound screen casing	1.00	lot		
		D. Supply & Installation of 110 mm diameter blank B.I. pipe and wirewound stainless screen casing	51.00	mtrs		
		E. Supply & Installation of #15 Peebles Gravel Pack	1.00	lot		
		F. Treatment with Polyphospate Detergent	1.00	lot		
		G. Well Development by Bailing & Surging	1.00	lot		
		H. Well Development by Overpumping	1.00	lot		
		I. Well Development by Air Lifting	1.00	lot		
		J. Pumping Test	1.00	lot		
		K. Supply & Install Clay Backfill	15.00	cu.m.		
		L. Sealing with Cement Grout	1.00	lot		
		M. Disinfection of Well	1.00	lot		
	B.	<b>Construction Of 2 Unit 2m X 2m X 2m Overhead Tank</b>				
		A. Excavation Works	12.53	cu.m.		
		B. Concrete Works	14.52	cu.m.		
		C. Reinforcing Steel Bar	1,937.37	kg.		
		D. Waterproofing	80.00	sq.m.		
		E. Formworks	164.48	sq.m.		
	C.	<b>Plumbing And Other Electrical Works</b>				

		Pump Installation and Plumbing Works	1.00	lot		
	D	<i>Bunkhouse and Other Facilities</i>	1.00	LS		
	SPL 1	<i>Occupational Construction Safety and Health</i>	1.00	LS		
	SPL 2	<i>Fabrication / Installation of Billboards</i>	1.00	unit		
	<i>Subtotal</i>					
	<b><i>SUBTOTAL FOR ITEM B</i></b>					
<b>C.</b>	<b>OTHER INFRASTRUCTURES</b>					
<b>15</b>	<b>Rechanneling/Desilting of Tagas River, Divino Rostro-San Roque Section, (Downstream of Tagas Bridge), Tabaco City</b>					
	SPL-1	Clearing & Deepening of Waterways	14,226.39	cu.m		
	SPL-2	Removal & Disposal of Silted Materials	5,690.56	cu.m		
	SPL-3	Fab/Installation of Billboard	1.00	unit		
	SPL-4	Occupational Construction Safety and Health	1.00	l.s		
	<i>Subtotal</i>					
<b>16</b>	<b>Rehabilitation of Irrigation System, Brgy. Guinobat, Tabaco City</b>					
	1	Clearing and Grubbing	930.00	sq.m		
	2	Temporary Diversion of Waterway	1.00	l.s		
	3	Demolition and Removal of Obstructions	651.00	sq.m		
	4	Reinforcing Steel	15,094.22	kgs		
	5	Structural Concrete	189.12	cu.m		
	6	Formworks	1,368.36	sq.m		
	7	Removal and Disposal of Unsuitable/Excavated Materials	465.00	cu.m		
	8	Bunkhouse (Rental Basis) and Other Facilities	1.00	l.s		
	9	Project Billboard/Signboard	1.00	unit		
	10	Occupational Construction Safety and Health	1.00	l.s		
	<i>Subtotal</i>					
<b>17</b>	<b>Rehabilitation/Improvement of San Miguel Island Roadways, San Miguel Island, Tabaco City (Hacienda to Visita Section)</b>					
	A.	Clearing and Grubbing	1,500.00	sq.m.		
	B.	Structure Excavation	562.24	cu.m.		
	C.	Backfill	140.56	cu.m.		
	D.	Removal and Disposal of Unsuitable (Excavated Materials)	421.68	cum		
	E.	Structural Concrete	120.00	cu.m.		
	F.	Reinforced Steel	9,392.33	kgs		
	G.	Masonry Works	1,000.00	sq.m.		
	H.	RCPC 0.45 m Ø	4.00	ln.m.		
	I.	Bunkhouse And Other Facilities	1.00	l.s		
	J.	Occupational Safety And Health Program	1.00	l.s		
	K.	Fab/Installation Of Billboards	1.00	unit		
	<i>Subtotal</i>					
<b>18</b>	<b>Rehabilitation / Improvement of Roadways at Tabaco South Elementary School, Tabaco City</b>					
	1	Clearing and Grubbing	371.25	sqm		
	2	Covered Canal	1.00	l.s		
	3	Subgrade Preparation	371.25	sqm		
	4	Aggregate Base Course	37.13	cu.m		
	5	PCCP (150mm thk)	371.25	sqm		
	6	Removal & Disposal of Excavated/Unsuitable Materials	55.69	cu.m		
	7	Bunkhouse (Rental Basis) and Other Facilities	1.00	l.s		
	8	Project Billboard/Signboard	1.00	unit		
	9	Occupational Construction Safety and Health	1.00	l.s		
	<i>Subtotal</i>					

	<i><b>SUBTOTAL FOR ITEM C</b></i>	
	<i><b>GRAND TOTAL</b></i>	

<b>Name of the Company/Bidder</b>	<b>Name of Authorized Representative</b>	<b>Signature of Authorized Representative</b>

Name of the Procuring Entity: *LGU-Tabaco City*

Contract ID No. *025-07-2023-INFRA*

Name of the Project: *Construction/Improvement/Rehabilitation of Various Public Infrastructure Projects (Buildings, Water System and Other Infrastructure Projects)*

Project Location: *Various Barangays, Tabaco City*

Contract Name : \_\_\_\_\_

Location : \_\_\_\_\_

### CASH FLOW BY QUARTER AND PAYMENT SCHEDULE

PARTICULAR	% WT.	1ST QUARTER	2ND QUARTER	3RD QUARTER	4TH QUARTER
ACCOMPLISHMENT					
CASH FLOW					
CUMULATIVE ACCOMPLISHMENT					
CUMULATIVE CASH FLOW					

Submitted by:

Name of the Representative of the Bidder : \_\_\_\_\_

Name of the Bidder: \_\_\_\_\_

Position : \_\_\_\_\_

Date \_\_\_\_\_

## Contract Agreement Form for the Procurement of Infrastructure Projects (Revised)

*[not required to be submitted with the Bid, but it shall be submitted within ten (10) days after receiving the  
Notice of Award]*

---

### CONTRACT AGREEMENT

THIS AGREEMENT, made this *[insert date]* day of *[insert month]*, *[insert year]* between *[name and address of PROCURING ENTITY]* (hereinafter called the “Entity”) and *[name and address of Contractor]* (hereinafter called the “Contractor”).

WHEREAS, the Entity is desirous that the Contractor execute *[name and identification number of contract]* (hereinafter called “the Works”) and the Entity has accepted the Bid for *[contract price in words and figures in specified currency]* by the Contractor for the execution and completion of such Works and the remedying of any defects therein.

NOW THIS AGREEMENT WITNESSETH AS FOLLOWS:

1. In this Agreement, words and expressions shall have the same meanings as are respectively assigned to them in the Conditions of Contract hereinafter referred to.
2. The following documents as required by the 2016 revised Implementing Rules and Regulations of Republic Act No. 9184 shall be deemed to form and be read and construed as part of this Agreement, *viz.*:

- a. Philippine Bidding Documents (PBDs);
  - i. Drawings/Plans;
  - ii. Specifications;
  - iii. Bill of Quantities;
  - iv. General and Special Conditions of Contract;
  - v. Supplemental or Bid Bulletins, if any;
- b. Winning bidder’s bid, including the Eligibility requirements, Technical and Financial Proposals, and all other documents or statements submitted;

Bid form, including all the documents/statements contained in the Bidder’s bidding envelopes, as annexes, and all other documents submitted (*e.g.*, Bidder’s response to request for clarifications on the bid), including corrections to the bid, if any, resulting from the Procuring Entity’s bid evaluation;

- c. Performance Security;
  - d. Notice of Award of Contract and the Bidder’s conforme thereto; and
  - e. Other contract documents that may be required by existing laws and/or the Procuring Entity concerned in the PBDs. **Winning bidder agrees that additional contract documents or information prescribed by the GPPB that are subsequently required for submission after the contract execution, such as the Notice to Proceed, Variation Orders, and Warranty Security, shall likewise form part of the Contract.**
3. In consideration for the sum of *[total contract price in words and figures]* or such other sums as may be ascertained, *[Named of the bidder]* agrees to *[state the object of the contract]* in accordance with his/her/its Bid.

4. The *[Name of the procuring entity]* agrees to pay the above-mentioned sum in accordance with the terms of the Bidding.

IN WITNESS whereof the parties thereto have caused this Agreement to be executed the day and year first before written.

*[Insert Name and Signature]*

*[Insert Name and Signature]*

*[Insert Signatory's Legal Capacity]*

*[Insert Signatory's Legal Capacity]*

*for:*

*for:*

*[Insert Procuring Entity]*

*[Insert Name of Supplier]*

**Acknowledgment**

*[Format shall be based on the latest Rules on Notarial Practice]*

NAME OF THE CONTRACTOR  
ADDRESS OF THE CONTRACTOR

**ATTY. JOVITO BRON CODERIS, JR.**  
**BAC CHAIRMAN**  
**LGU-TABACO CITY**

**ORIGINAL - TECHNICAL COMPONENT**

**CONSTRUCTION/IMPROVEMENT/REHABILITATION OF VARIOUS  
PUBLIC INFRASTRUCTURE PROJECTS (BUILDINGS, WATER SYSTEM  
AND OTHER INFRASTRUCTURE PROJECTS)  
VARIOUS BARANGAYS, TABACO CITY  
CONTRACT ID NO. 025-07-2023-INFRA**

**DO NOT OPEN BEFORE AUGUST 07, 2023, 9:30AM**

NAME OF THE CONTRACTOR  
ADDRESS OF THE CONTRACTOR

**ATTY. JOVITO BRON CODERIS, JR.**  
**BAC CHAIRMAN**  
**LGU-TABACO CITY**

**ORIGINAL – FINANCIAL COMPONENT**

**CONSTRUCTION/IMPROVEMENT/REHABILITATION OF VARIOUS  
PUBLIC INFRASTRUCTURE PROJECTS (BUILDINGS, WATER SYSTEM  
AND OTHER INFRASTRUCTURE PROJECTS)  
VARIOUS BARANGAYS, TABACO CITY  
CONTRACT ID NO. 025-07-2023-INFRA**

**DO NOT OPEN BEFORE AUGUST 07, 2023, 9:30AM**

**NAME OF THE CONTRACTOR**  
**ADDRESS OF THE CONTRACTOR**

**ATTY. JOVITO BRON CODERIS, JR.**  
**BAC CHAIRMAN**  
**LGU-TABACO CITY**

**ORIGINAL BID**

**CONSTRUCTION/IMPROVEMENT/REHABILITATION OF VARIOUS  
PUBLIC INFRASTRUCTURE PROJECTS (BUILDINGS, WATER SYSTEM  
AND OTHER INFRASTRUCTURE PROJECTS)  
VARIOUS BARANGAYS, TABACO CITY  
CONTRACT ID NO. 025-07-2023-INFRA**

**DO NOT OPEN BEFORE AUGUST 07, 2023, 9:30AM**

NAME OF THE CONTRACTOR  
ADDRESS OF THE CONTRACTOR

**ATTY. JOVITO BRON CODERIS, JR.**  
**BAC CHAIRMAN**  
**LGU-TABACO CITY**

**COPY NO. 1 - TECHNICAL COMPONENT**

**CONSTRUCTION/IMPROVEMENT/REHABILITATION OF VARIOUS  
PUBLIC INFRASTRUCTURE PROJECTS (BUILDINGS, WATER SYSTEM  
AND OTHER INFRASTRUCTURE PROJECTS)  
VARIOUS BARANGAYS, TABACO CITY  
CONTRACT ID NO. 025-07-2023-INFRA**

**DO NOT OPEN BEFORE AUGUST 07, 2023, 9:30AM**

NAME OF THE CONTRACTOR  
ADDRESS OF THE CONTRACTOR

**ATTY. JOVITO BRON CODERIS, JR.**  
**BAC CHAIRMAN**  
**LGU-TABACO CITY**

**COPY NO. 1 – FINANCIAL COMPONENT**

**CONSTRUCTION/IMPROVEMENT/REHABILITATION OF VARIOUS  
PUBLIC INFRASTRUCTURE PROJECTS (BUILDINGS, WATER SYSTEM  
AND OTHER INFRASTRUCTURE PROJECTS)  
VARIOUS BARANGAYS, TABACO CITY  
CONTRACT ID NO. 025-07-2023-INFRA**

**DO NOT OPEN BEFORE AUGUST 07, 2023, 9:30AM**

**NAME OF THE CONTRACTOR**  
**ADDRESS OF THE CONTRACTOR**

**ATTY. JOVITO BRON CODERIS, JR.**  
**BAC CHAIRMAN**  
**LGU-TABACO CITY**

**COPY NO. 1**

**CONSTRUCTION/IMPROVEMENT/REHABILITATION OF VARIOUS  
PUBLIC INFRASTRUCTURE PROJECTS (BUILDINGS, WATER SYSTEM  
AND OTHER INFRASTRUCTURE PROJECTS)  
VARIOUS BARANGAYS, TABACO CITY  
CONTRACT ID NO. 025-07-2023-INFRA**

**DO NOT OPEN BEFORE AUGUST 07, 2023, 9:30AM**

NAME OF THE CONTRACTOR  
ADDRESS OF THE CONTRACTOR

**ATTY. JOVITO BRON CODERIS, JR.**  
**BAC CHAIRMAN**  
**LGU-TABACO CITY**

**COPY NO. 2 - TECHNICAL COMPONENT**

**CONSTRUCTION/IMPROVEMENT/REHABILITATION OF VARIOUS  
PUBLIC INFRASTRUCTURE PROJECTS (BUILDINGS, WATER SYSTEM  
AND OTHER INFRASTRUCTURE PROJECTS)  
VARIOUS BARANGAYS, TABACO CITY  
CONTRACT ID NO. 025-07-2023-INFRA**

**DO NOT OPEN BEFORE AUGUST 07, 2023, 9:30AM**

NAME OF THE CONTRACTOR  
ADDRESS OF THE CONTRACTOR

**ATTY. JOVITO BRON CODERIS, JR.**  
**BAC CHAIRMAN**  
**LGU-TABACO CITY**

**COPY NO. 2 – FINANCIAL COMPONENT**

**CONSTRUCTION/IMPROVEMENT/REHABILITATION OF VARIOUS  
PUBLIC INFRASTRUCTURE PROJECTS (BUILDINGS, WATER SYSTEM  
AND OTHER INFRASTRUCTURE PROJECTS)  
VARIOUS BARANGAYS, TABACO CITY  
CONTRACT ID NO. 025-07-2023-INFRA**

**DO NOT OPEN BEFORE AUGUST 07, 2023, 9:30AM**

**NAME OF THE CONTRACTOR**  
**ADDRESS OF THE CONTRACTOR**

**ATTY. JOVITO BRON CODERIS, JR.**  
**BAC CHAIRMAN**  
**LGU-TABACO CITY**

**COPY NO. 2**

**CONSTRUCTION/IMPROVEMENT/REHABILITATION OF VARIOUS  
PUBLIC INFRASTRUCTURE PROJECTS (BUILDINGS, WATER SYSTEM  
AND OTHER INFRASTRUCTURE PROJECTS)  
VARIOUS BARANGAYS, TABACO CITY  
CONTRACT ID NO. 025-07-2023-INFRA**

**DO NOT OPEN BEFORE AUGUST 07, 2023, 9:30AM**

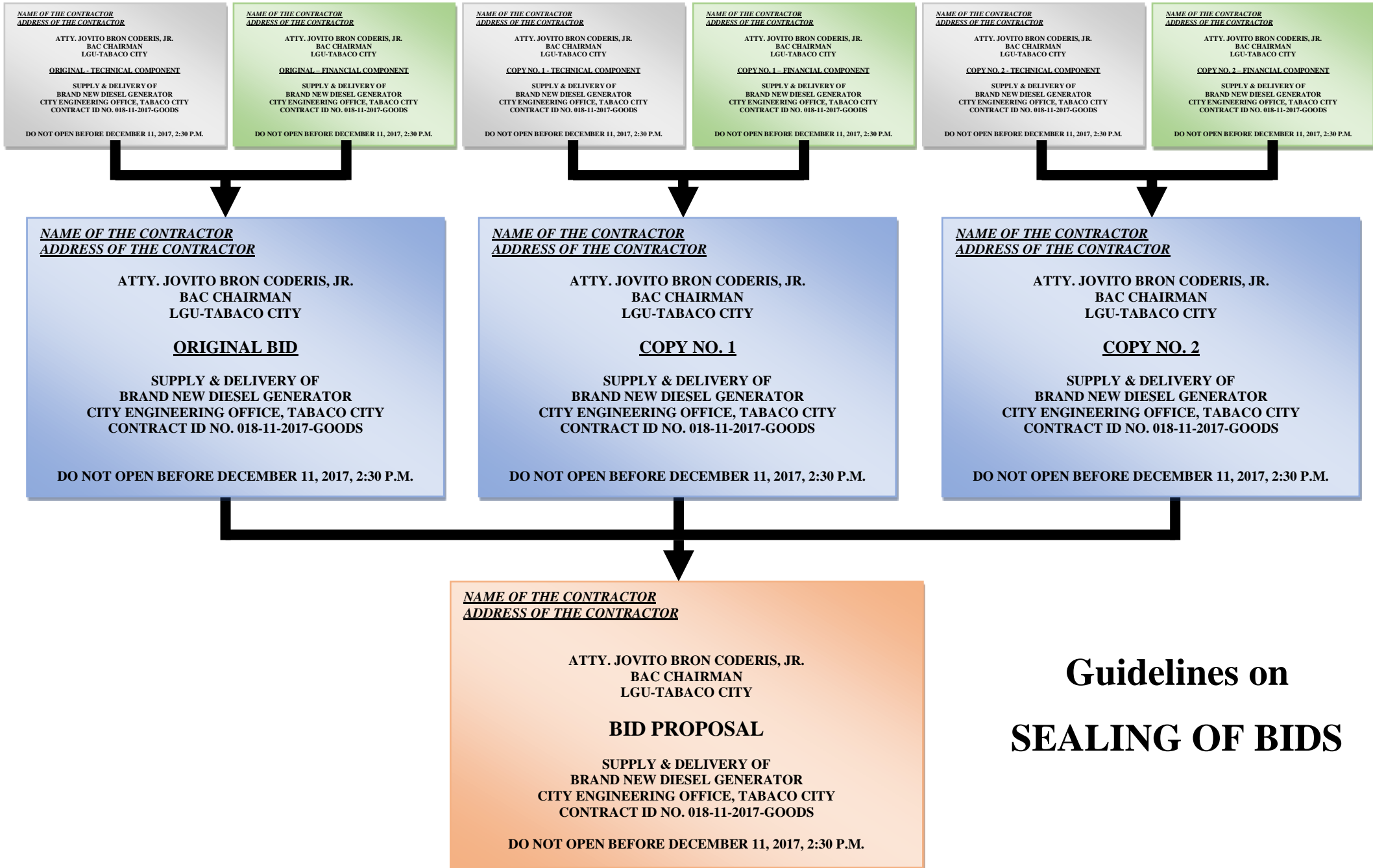
NAME OF THE CONTRACTOR  
ADDRESS OF THE CONTRACTOR

**ATTY. JOVITO BRON CODERIS, JR.**  
**BAC CHAIRMAN**  
**LGU-TABACO CITY**

# **BID PROPOSAL**

**CONSTRUCTION/IMPROVEMENT/REHABILITATION OF VARIOUS  
PUBLIC INFRASTRUCTURE PROJECTS (BUILDINGS, WATER SYSTEM  
AND OTHER INFRASTRUCTURE PROJECTS)  
VARIOUS BARANGAYS, TABACO CITY  
CONTRACT ID NO. 025-07-2023-INFRA**

**DO NOT OPEN BEFORE AUGUST 07, 2023, 9:30AM**



## Guidelines on SEALING OF BIDS

