

# **PHILIPPINE BIDDING DOCUMENTS**

(As Harmonized with Development Partners)

Government of the Republic of the Philippines

Province of Albay

**CITY OF TABACO**

---

## **Procurement of Infrastructure Projects**

---

**CONSTRUCTION / IMPROVEMENT OF  
VARIOUS INFRASTRUCTURE PROJECTS  
(PUBLIC BUILDINGS & OTHER  
INFRASTRUCTURE PROJECTS)  
VARIOUS BARANGAYS, TABACO CITY**

---

**Contract ID No. 024-04-2025-INFRA-PB**

---

**April 30, 2025**

**Sixth Edition  
July 2020**

# TABLE OF CONTENTS

<b>Glossary of Terms, Abbreviations, and Acronyms.....</b>	<b>4</b>
<b>Section I. Invitation to Bid .....</b>	<b>6</b>
<b>Section II. Instructions to Bidders.....</b>	<b>9</b>
1. Scope of Bid.....	10
2. Funding Information .....	10
3. Bidding Requirements.....	10
4. Corrupt, Fraudulent, Collusive, Coercive, and Obstructive Practices .....	10
5. Eligible Bidders.....	10
6. Origin of Associated Goods .....	11
7. Subcontracts .....	11
8. Pre-Bid Conference.....	11
9. Clarification and Amendment of Bidding Documents.....	11
10. Documents Comprising the Bid: Eligibility and Technical Components .....	11
11. Documents Comprising the Bid: Financial Component .....	12
12. Alternative Bids .....	12
13. Bid Prices .....	12
14. Bid and Payment Currencies .....	12
15. Bid Security.....	13
16. Sealing and Marking of Bids.....	13
17. Deadline for Submission of Bids .....	13
18. Opening and Preliminary Examination of Bids .....	13
19. Detailed Evaluation and Comparison of Bids.....	13
20. Post Qualification.....	14
21. Signing of the Contract .....	14
<b>Section III. Bid Data Sheet.....</b>	<b>15</b>
<b>Section IV. General Conditions of Contract .....</b>	<b>18</b>
1. Scope of Contract.....	19
2. Sectional Completion of Works .....	19
3. Possession of Site.....	19
4. The Contractor’s Obligations.....	19
5. Performance Security .....	19
6. Site Investigation Reports .....	20
7. Warranty.....	20
8. Liability of the Contractor.....	20
9. Termination for Other Causes .....	20
10. Dayworks .....	20
11. Program of Work.....	20

12. Instructions, Inspections and Audits .....	21
13. Advance Payment.....	21
14. Progress Payments .....	21
15. Operating and Maintenance Manuals.....	21
<b>Section V. Special Conditions of Contract.....</b>	<b>22</b>
<b>Section VI. Specifications .....</b>	<b>24</b>
<b>Section VII. Drawings.....</b>	<b>61</b>
<b>Section VIII. Bill of Quantities .....</b>	<b>63</b>
<b>Section IX. Checklist of Technical and Financial Documents.....</b>	<b>701</b>
<b>Annex A. Forms and Templates .....</b>	<b>74</b>

# *Glossary of Terms, Abbreviations, and Acronyms*

**ABC** – Approved Budget for the Contract.

**ARCC** – Allowable Range of Contract Cost.

**BAC** – Bids and Awards Committee.

**Bid** – A signed offer or proposal to undertake a contract submitted by a bidder in response to and in consonance with the requirements of the bidding documents. Also referred to as *Proposal* and *Tender*. (2016 revised IRR, Section 5[c])

**Bidder** – Refers to a contractor, manufacturer, supplier, distributor and/or consultant who submits a bid in response to the requirements of the Bidding Documents. (2016 revised IRR, Section 5[d])

**Bidding Documents** – The documents issued by the Procuring Entity as the bases for bids, furnishing all information necessary for a prospective bidder to prepare a bid for the Goods, Infrastructure Projects, and/or Consulting Services required by the Procuring Entity. (2016 revised IRR, Section 5[e])

**BIR** – Bureau of Internal Revenue.

**BSP** – Bangko Sentral ng Pilipinas.

**CDA** – Cooperative Development Authority.

**Consulting Services** – Refer to services for Infrastructure Projects and other types of projects or activities of the GOP requiring adequate external technical and professional expertise that are beyond the capability and/or capacity of the GOP to undertake such as, but not limited to: (i) advisory and review services; (ii) pre-investment or feasibility studies; (iii) design; (iv) construction supervision; (v) management and related services; and (vi) other technical services or special studies. (2016 revised IRR, Section 5[i])

**Contract** – Refers to the agreement entered into between the Procuring Entity and the Supplier or Manufacturer or Distributor or Service Provider for procurement of Goods and Services; Contractor for Procurement of Infrastructure Projects; or Consultant or Consulting Firm for Procurement of Consulting Services; as the case may be, as recorded in the Contract Form signed by the parties, including all attachments and appendices thereto and all documents incorporated by reference therein.

**Contractor** – is a natural or juridical entity whose proposal was accepted by the Procuring Entity and to whom the Contract to execute the Work was awarded. Contractor as used in these Bidding Documents may likewise refer to a supplier, distributor, manufacturer, or consultant.

**CPI** – Consumer Price Index.

**DOLE** – Department of Labor and Employment.

**DTI** – Department of Trade and Industry.

**Foreign-funded Procurement or Foreign-Assisted Project** –Refers to procurement whose funding source is from a foreign government, foreign or international financing institution as specified in the Treaty or International or Executive Agreement. (2016 revised IRR, Section 5[b]).

**GFI** – Government Financial Institution.

**GOCC** –Government-owned and/or –controlled corporation.

**Goods** – Refer to all items, supplies, materials and general support services, except Consulting Services and Infrastructure Projects, which may be needed in the transaction of public businesses or in the pursuit of any government undertaking, project or activity, whether in the nature of equipment, furniture, stationery, materials for construction, or personal property of any kind, including non-personal or contractual services such as the repair and maintenance of equipment and furniture, as well as trucking, hauling, janitorial, security, and related or analogous services, as well as procurement of materials and supplies provided by the Procuring Entity for such services. The term “related” or “analogous services” shall include, but is not limited to, lease or purchase of office space, media advertisements, health maintenance services, and other services essential to the operation of the Procuring Entity. (2016 revised IRR, Section 5[r])

**GOP** – Government of the Philippines.

**Infrastructure Projects** – Include the construction, improvement, rehabilitation, demolition, repair, restoration or maintenance of roads and bridges, railways, airports, seaports, communication facilities, civil works components of information technology projects, irrigation, flood control and drainage, water supply, sanitation, sewerage and solid waste management systems, shore protection, energy/power and electrification facilities, national buildings, school buildings, hospital buildings, and other related construction projects of the government. Also referred to as *civil works or works*. (2016 revised IRR, Section 5[u])

**LGUs** – Local Government Units.

**NFCC** – Net Financial Contracting Capacity.

**NGA** – National Government Agency.

**PCAB** – Philippine Contractors Accreditation Board.

**PhilGEPS** - Philippine Government Electronic Procurement System.

**Procurement Project** – refers to a specific or identified procurement covering goods, infrastructure project or consulting services. A Procurement Project shall be described, detailed, and scheduled in the Project Procurement Management Plan prepared by the agency which shall be consolidated in the procuring entity's Annual Procurement Plan. (GPPB Circular No. 06-2019 dated 17 July 2019)

**PSA** – Philippine Statistics Authority.

**SEC** – Securities and Exchange Commission.

**SLCC** – Single Largest Completed Contract.

**UN** – United Nations.

***Section I. Invitation to Bid***



Republic of the Philippines  
Province of Albay  
CITY GOVERNMENT OF TABACO  
Tabaco City

**Bids and Awards Committee**

**Invitation to Bid for  
Construction / Improvement of Various Infrastructure Projects  
(Public Buildings & Other Infrastructure Projects)  
Various Barangays, Tabaco City  
Contract ID No. 024-04-2025-INFRA-PB**

1. The *City Government of Tabaco*, through the *CDF-2024 (SB No. 03-2024) Reprogrammed various prior years savings of 20% CDF, CDF-2025 (SB No. 01-2025) Reprogrammed savings of 20% CDF 2024, 70% CDRRMF 2025, and GAD Fund 2025*, intends to apply the sum of *Forty-Two Million Two Hundred Fifty-One Thousand Nine Hundred Thirty-Two Pesos and Fifty Centavos (Php 42,251,932.50)* being the Approved Budget for the Contract (ABC) to payments under the contract for the *Construction / Improvement of Various Infrastructure Projects (Public Buildings & Other Infrastructure Projects), Various Barangays, Tabaco City under Contract ID No. 024-04-2025-INFRA-PB*. Bids received in excess of the ABC shall be automatically rejected at bid opening.
2. The *City Government of Tabaco* now invites bids for the above Procurement Project. Completion of the Works is required *within 240 calendar days from receipt of Notice to Proceed*. Bidders should have completed a contract similar to the Project. The description of an eligible bidder is contained in the Bidding Documents, particularly, in Section II (Instructions to Bidders).
3. Bidding will be conducted through open competitive bidding procedures using non-discretionary “*pass/fail*” criterion as specified in the 2016 revised Implementing Rules and Regulations (IRR) of Republic Act (RA) No. 9184.
4. Interested bidders may obtain further information from the *City Government of Tabaco* and inspect the Bidding Documents at the address given below from *9:00 A.M. to 4:00 PM*.
5. A complete set of Bidding Documents may be acquired by interested bidders on *April 30-May 20, 2025* from given address and website/s below *and upon payment of the applicable fee for the Bidding Documents*, pursuant to the latest Guidelines issued by the GPPB, in the amount of *Twenty-Five Thousand Pesos (P25,000.00)*. The Procuring Entity shall allow the bidder to present its proof of payment for the fees in person.
6. The *City Government of Tabaco* will hold a Pre-Bid Conference on *May 08, 2025, 9:30AM, BAC Conference Room, 2F Annex Bldg., Tabaco City Hall, Tabaco City*, which shall be open to prospective bidders.
7. Bids must be duly received by the BAC Secretariat through manual submission at the office address as indicated below on or before *9:00AM, May 20, 2025*. Late bids shall not be accepted.

8. All bids must be accompanied by a bid security in any of the acceptable forms and in the amount stated in **ITB** Clause 16.
9. Bid opening shall be on **May 20, 2025, 9:30AM** at the given address below. Bids will be opened in the presence of the bidders' representatives who choose to attend the activity.

10. **Other Necessary Information:**

**Minimum PCAB License Category:** General Building

**Project Size Range:** Building- Medium A

**Minimum Manpower Requirements:**

- 1 Project Manager
- 1 Project Engineer
- 1 Materials Engineer I
- 7 Construction Foreman
- 3 Safety Officer
- 7 First Aider
- 6 Skilled Laborer
- 23 Common Laborer

**Minimum Equipment Required:**

- 6 units Concrete Mixer, one bagger
- 7 units Bar Cutter / Bender
- 5 units Concrete Vibrator
- 3 units Generator
- 1 unit Stake Truck
- 6 units Welding Machine
- 2 units Backhoe, wheel type
- 3 units Water Truck, 1000 gal
- 1 unit Jackhammer, with genset
- 1 unit Chain Block
- 1 unit Self-Loading Truck
- Enough Handtools

11. The **City Government of Tabaco** reserves the right to reject any and all bids, declare a failure of bidding, or not award the contract at any time prior to contract award in accordance with Sections 35.6 and 41 of the 2016 revised Implementing Rules and Regulations (IRR) of RA No. 9184, without thereby incurring any liability to the affected bidder or bidders.

12. For further information, please refer to:

**Atty. Jovito Bron Coderis, Jr.**  
BAC Chairman / City Legal Office  
BAC Office / City Legal Office  
2F Annex Bldg., Tabaco City Hall, Tabaco City  
Email: [\*\*bactabaco16@gmail.com\*\*](mailto:bactabaco16@gmail.com)  
Website: [tabacocity.gov.ph](http://tabacocity.gov.ph)

13. You may visit the following website:

For downloading of Bidding Documents: [\*\*www.tabacocity.com.ph\*\*](http://www.tabacocity.com.ph)

April 30, 2025

(Sgd.)  
**ATTY. JOVITO BRON CODERIS, JR.**  
BAC Chairperson



## ***Section II. Instructions to Bidders***

## **1. Scope of Bid**

The Procuring Entity, *City Government of Tabaco* invites Bids for the *Construction / Improvement of Various Infrastructure Projects (Public Buildings & Other Infrastructure Projects), Various Barangays, Tabaco City under Contract ID No. 024-04-2025-INFRA-PB.*

The Procurement Project (referred to herein as “Project”) is for the construction of Works, as described in Section VI (Specifications).

## **2. Funding Information**

2.1. The GOP through the source of funding as indicated below for 2025 in the amount of *Forty-Two Million Two Hundred Fifty-One Thousand Nine Hundred Thirty-Two Pesos and Fifty Centavos (Php 42,251,932.50).*

2.2. The source of funding is:

*LGUs, the Annual or Supplemental Budget, as approved by the Sanggunian*

## **3. Bidding Requirements**

The Bidding for the Project shall be governed by all the provisions of RA No. 9184 and its 2016 revised IRR, including its Generic Procurement Manual and associated policies, rules and regulations as the primary source thereof, while the herein clauses shall serve as the secondary source thereof.

Any amendments made to the IRR and other GPPB issuances shall be applicable only to the ongoing posting, advertisement, or invitation to bid by the BAC through the issuance of a supplemental or bid bulletin.

The Bidder, by the act of submitting its Bid, shall be deemed to have inspected the site, determined the general characteristics of the contracted Works and the conditions for this Project, such as the location and the nature of the work; (b) climatic conditions; (c) transportation facilities; (c) nature and condition of the terrain, geological conditions at the site communication facilities, requirements, location and availability of construction aggregates and other materials, labor, water, electric power and access roads; and (d) other factors that may affect the cost, duration and execution or implementation of the contract, project, or work and examine all instructions, forms, terms, and project requirements in the Bidding Documents.

## **4. Corrupt, Fraudulent, Collusive, Coercive, and Obstructive Practices**

The Procuring Entity, as well as the Bidders and Contractors, shall observe the highest standard of ethics during the procurement and execution of the contract. They or through an agent shall not engage in corrupt, fraudulent, collusive, coercive, and obstructive practices defined under Annex “I” of the 2016 revised IRR of RA No. 9184 or other integrity violations in competing for the Project.

## **5. Eligible Bidders**

5.1. Only Bids of Bidders found to be legally, technically, and financially capable will be evaluated.

- 5.2. The Bidder must have an experience of having completed a Single Largest Completed Contract (SLCC) that is similar to this Project, equivalent to at least fifty percent (50%) of the ABC adjusted, if necessary, by the Bidder to current prices using the PSA's CPI, except under conditions provided for in Section 23.4.2.4 of the 2016 revised IRR of RA No. 9184.

A contract is considered to be "similar" to the contract to be bid if it has the major categories of work stated in the **BDS**.

- 5.3. For Foreign-funded Procurement, the Procuring Entity and the foreign government/foreign or international financing institution may agree on another track record requirement, as specified in the Bidding Document prepared for this purpose.
- 5.4. The Bidders shall comply with the eligibility criteria under Section 23.4.2 of the 2016 IRR of RA No. 9184.

## **6. Origin of Associated Goods**

There is no restriction on the origin of Goods other than those prohibited by a decision of the UN Security Council taken under Chapter VII of the Charter of the UN.

## **7. Subcontracts**

- 7.1. The Bidder may subcontract portions of the Project to the extent allowed by the Procuring Entity as stated herein, but in no case more than fifty percent (50%) of the Project.

*The Procuring Entity has prescribed that subcontracting is not allowed.*

- 7.1. Subcontracting of any portion of the Project does not relieve the Contractor of any liability or obligation under the Contract. The Supplier will be responsible for the acts, defaults, and negligence of any subcontractor, its agents, servants, or workmen as fully as if these were the Contractor's own acts, defaults, or negligence, or those of its agents, servants, or workmen.

## **8. Pre-Bid Conference**

The Procuring Entity will hold a pre-bid conference for this Project on the specified date and time and either at its physical address as indicated in paragraph 6 of the **IB**.

## **9. Clarification and Amendment of Bidding Documents**

Prospective bidders may request for clarification on and/or interpretation of any part of the Bidding Documents. Such requests must be in writing and received by the Procuring Entity, either at its given address or through electronic mail indicated in the **IB**, at least ten (10) calendar days before the deadline set for the submission and receipt of Bids.

## **10. Documents Comprising the Bid: Eligibility and Technical Components**

- 10.1. The first envelope shall contain the eligibility and technical documents of the Bid as specified in **Section IX. Checklist of Technical and Financial Documents**.

- 10.2. If the eligibility requirements or statements, the bids, and all other documents for submission to the BAC are in foreign language other than English, it must be accompanied by a translation in English, which shall be authenticated by the appropriate Philippine foreign service establishment, post, or the equivalent office having jurisdiction over the foreign bidder's affairs in the Philippines. For Contracting Parties to the Apostille Convention, only the translated documents shall be authenticated through an apostille pursuant to GPPB Resolution No. 13-2019 dated 23 May 2019. The English translation shall govern, for purposes of interpretation of the bid.
- 10.3. A valid PCAB License is required, and in case of joint ventures, a valid special PCAB License, and registration for the type and cost of the contract for this Project. Any additional type of Contractor license or permit shall be indicated in the **BDS**.
- 10.4. A List of Contractor's key personnel (e.g., Project Manager, Project Engineers, Materials Engineers, and Foremen) assigned to the contract to be bid, with their complete qualification and experience data shall be provided. These key personnel must meet the required minimum years of experience set in the **BDS**.
- 10.5. A List of Contractor's major equipment units, which are owned, leased, and/or under purchase agreements, supported by proof of ownership, certification of availability of equipment from the equipment lessor/vendor for the duration of the project, as the case may be, must meet the minimum requirements for the contract set in the **BDS**.

## **11. Documents Comprising the Bid: Financial Component**

- 11.1. The second bid envelope shall contain the financial documents for the Bid as specified in **Section IX. Checklist of Technical and Financial Documents**.
- 11.2. Any bid exceeding the ABC indicated in paragraph 1 of the **IB** shall not be accepted.
- 11.3. For Foreign-funded procurement, a ceiling may be applied to bid prices provided the conditions are met under Section 31.2 of the 2016 revised IRR of RA No. 9184.

## **12. Alternative Bids**

Bidders shall submit offers that comply with the requirements of the Bidding Documents, including the basic technical design as indicated in the drawings and specifications. Unless there is a value engineering clause in the **BDS**, alternative Bids shall not be accepted.

## **13. Bid Prices**

All bid prices for the given scope of work in the Project as awarded shall be considered as fixed prices, and therefore not subject to price escalation during contract implementation, except under extraordinary circumstances as determined by the NEDA and approved by the GPPB pursuant to the revised Guidelines for Contract Price Escalation guidelines.

## **14. Bid and Payment Currencies**

- 14.1. Bid prices may be quoted in the local currency or trade able currency accepted by the BSP at the discretion of the Bidder. However, for purposes of bid evaluation, Bids denominated in foreign currencies shall be converted to Philippine currency based on the exchange rate as published in the BSP reference rate bulletin on the day of the bid opening.
- 14.2. Payment of the contract price shall be made in Philippine Pesos.

## **15. Bid Security**

- 15.1. The Bidder shall submit a Bid Securing Declaration or any form of Bid Security in the amount indicated in the **BDS**, which shall be not less than the percentage of the ABC in accordance with the schedule in the **BDS**.
- 15.2. The Bid and bid security shall be valid until **September 17, 2025**. Any bid not accompanied by an acceptable bid security shall be rejected by the Procuring Entity as non-responsive.

## **16. Sealing and Marking of Bids**

Each Bidder shall submit one copy of the first and second components of its Bid.

The Procuring Entity may request additional hard copies and/or electronic copies of the Bid. However, failure of the Bidders to comply with the said request shall not be a ground for disqualification.

If the Procuring Entity allows the submission of bids through online submission to the given website or any other electronic means, the Bidder shall submit an electronic copy of its Bid, which must be digitally signed. An electronic copy that cannot be opened or is corrupted shall be considered non-responsive and, thus, automatically disqualified.

## **17. Deadline for Submission of Bids**

The Bidders shall submit on the specified date and time and either at its physical address or through online submission as indicated in paragraph 7 of the **IB**.

## **18. Opening and Preliminary Examination of Bids**

- 18.1. The BAC shall open the Bids in public at the time, on the date, and at the place specified in paragraph 9 of the **IB**. The Bidders' representatives who are present shall sign a register evidencing their attendance. In case videoconferencing, webcasting or other similar technologies will be used, attendance of participants shall likewise be recorded by the BAC Secretariat.  
In case the Bids cannot be opened as scheduled due to justifiable reasons, the rescheduling requirements under Section 29 of the 2016 revised IRR of RA No. 9184 shall prevail.
- 18.2. The preliminary examination of Bids shall be governed by Section 30 of the 2016 revised IRR of RA No. 9184.

## **19. Detailed Evaluation and Comparison of Bids**

- 19.1. The Procuring Entity's BAC shall immediately conduct a detailed evaluation of all Bids rated "*passed*" using non-discretionary pass/fail criteria. The BAC

shall consider the conditions in the evaluation of Bids under Section 32.2 of 2016 revised IRR of RA No. 9184.

- 19.2. If the Project allows partial bids, all Bids and combinations of Bids as indicated in the **BDS** shall be received by the same deadline and opened and evaluated simultaneously so as to determine the Bid or combination of Bids offering the lowest calculated cost to the Procuring Entity. Bid Security as required by **ITB** Clause 16 shall be submitted for each contract (lot) separately.
- 19.3. In all cases, the NFCC computation pursuant to Section 23.4.2.6 of the 2016 revised IRR of RA No. 9184 must be sufficient for the total of the ABCs for all the lots participated in by the prospective Bidder.

## **20. Post Qualification**

Within a non-extendible period of *five (5) calendar days* from receipt by the Bidder of the notice from the BAC that it submitted the Lowest Calculated Bid, the Bidder shall submit its *latest income and business tax returns filed and paid through the BIR Electronic Filing and Payment System (eFPS), and other appropriate licenses and permits required by law* and stated in the **BDS**.

## **21. Signing of the Contract**

The documents required in Section 37.2 of the 2016 revised IRR of RA No. 9184 shall form part of the Contract. Additional Contract documents are indicated in the **BDS**.

***Section III. Bid Data Sheet***

# Bid Data Sheet

ITB Clause																																								
5.2	For this purpose, contracts similar to the Project refer to contracts which have the same major categories of work, which shall be <b>construction/ improvement/ rehabilitation/repair of buildings</b> .																																							
7.1	<i>Subcontracting is not allowed.</i>																																							
10.3	PCAB Registration Particular includes the following:  Kind of Project and Size Range: <b>Buildings - Medium A</b>																																							
10.4	The key personnel must meet the required minimum years of experience set below.  <table border="1" style="width: 100%; border-collapse: collapse;"> <thead> <tr> <th style="text-align: center;"><u>Key Personnel</u></th> <th style="text-align: center;"><u>General Experience</u></th> <th style="text-align: center;"><u>Relevant Experience</u></th> </tr> </thead> <tbody> <tr> <td>Project Manager</td> <td style="text-align: center;">5</td> <td style="text-align: center;">3</td> </tr> <tr> <td>Project Engineer</td> <td style="text-align: center;">5</td> <td style="text-align: center;">3</td> </tr> <tr> <td>Materials Engineer I</td> <td style="text-align: center;">3</td> <td style="text-align: center;">1</td> </tr> <tr> <td>Construction Foreman</td> <td style="text-align: center;">3</td> <td style="text-align: center;">1</td> </tr> <tr> <td>Safety Officer</td> <td style="text-align: center;">40 hrs training</td> <td style="text-align: center;">40 hrs training</td> </tr> <tr> <td>First Aider</td> <td style="text-align: center;">-</td> <td style="text-align: center;">-</td> </tr> </tbody> </table>	<u>Key Personnel</u>	<u>General Experience</u>	<u>Relevant Experience</u>	Project Manager	5	3	Project Engineer	5	3	Materials Engineer I	3	1	Construction Foreman	3	1	Safety Officer	40 hrs training	40 hrs training	First Aider	-	-																		
<u>Key Personnel</u>	<u>General Experience</u>	<u>Relevant Experience</u>																																						
Project Manager	5	3																																						
Project Engineer	5	3																																						
Materials Engineer I	3	1																																						
Construction Foreman	3	1																																						
Safety Officer	40 hrs training	40 hrs training																																						
First Aider	-	-																																						
10.5	The minimum major equipment requirements are the following:  <table border="1" style="width: 100%; border-collapse: collapse;"> <thead> <tr> <th style="text-align: center;">Equipment</th> <th style="text-align: center;">Capacity</th> <th style="text-align: center;">Number of Units</th> </tr> </thead> <tbody> <tr> <td>Concrete Mixer</td> <td style="text-align: center;">one bagger</td> <td style="text-align: center;">6</td> </tr> <tr> <td>Bar Cutter / Bender</td> <td></td> <td style="text-align: center;">7</td> </tr> <tr> <td>Concrete Vibrator</td> <td></td> <td style="text-align: center;">5</td> </tr> <tr> <td>Generator</td> <td></td> <td style="text-align: center;">3</td> </tr> <tr> <td>Stake Truck</td> <td></td> <td style="text-align: center;">1</td> </tr> <tr> <td>Welding Machine</td> <td></td> <td style="text-align: center;">6</td> </tr> <tr> <td>Backhoe</td> <td style="text-align: center;">wheel type</td> <td style="text-align: center;">2</td> </tr> <tr> <td>Water Truck,</td> <td style="text-align: center;">1000 gal</td> <td style="text-align: center;">3</td> </tr> <tr> <td>Jackhammer</td> <td style="text-align: center;">with genset</td> <td style="text-align: center;">1</td> </tr> <tr> <td>Chain Block</td> <td></td> <td style="text-align: center;">1</td> </tr> <tr> <td>Self-Loading Truck</td> <td></td> <td style="text-align: center;">1</td> </tr> <tr> <td>Enough Handtools</td> <td></td> <td style="text-align: center;">Enough</td> </tr> </tbody> </table>	Equipment	Capacity	Number of Units	Concrete Mixer	one bagger	6	Bar Cutter / Bender		7	Concrete Vibrator		5	Generator		3	Stake Truck		1	Welding Machine		6	Backhoe	wheel type	2	Water Truck,	1000 gal	3	Jackhammer	with genset	1	Chain Block		1	Self-Loading Truck		1	Enough Handtools		Enough
Equipment	Capacity	Number of Units																																						
Concrete Mixer	one bagger	6																																						
Bar Cutter / Bender		7																																						
Concrete Vibrator		5																																						
Generator		3																																						
Stake Truck		1																																						
Welding Machine		6																																						
Backhoe	wheel type	2																																						
Water Truck,	1000 gal	3																																						
Jackhammer	with genset	1																																						
Chain Block		1																																						
Self-Loading Truck		1																																						
Enough Handtools		Enough																																						
12	Alternative Bids shall not be accepted.																																							
15.1	The bid security shall be in the form of a Bid Securing Declaration or any of the following forms and amounts: a. The amount of not less than <b>Php 845,038.65 [2% of ABC]</b> , draft/guarantee or irrevocable letter of credit;  b. The amount of not less than <b>Php 2,112,596.62 [5% of ABC]</b> if bid security is in Surety Bond.																																							
16	Each Bidder shall submit one (1) original and two (2) copies of the first and second components of its bid. Should there be discrepancies, the original copy would prevail.																																							
19.2	Partial bids are not allowed.																																							
20	Other appropriate licenses and permits:																																							



	<ul style="list-style-type: none"> <li><i>a. Valid and Current Registration Certificate (SEC, DTI, or CDA, whichever is applicable), all pages</i></li> <li><i>b. Valid and Current Mayor's Permit</i></li> <li><i>c. Valid Tax Clearance for Bidding Purposes</i></li> <li><i>d. Valid PCAB License</i></li> <li><i>e. Latest Audited Financial Statements stamped received by the BIR or its duly authorized institution</i></li> <li><i>f. BIR Registration Certificate</i></li> </ul>
21	<p>Additional contract documents relevant to the Project:</p> <ul style="list-style-type: none"> <li>A. Construction Safety and Health Program approved by the DOLE;</li> <li>B. Contractor's All Risk Insurance (CARI);</li> <li>C. Construction Schedule and S-curve / Bar Chart / PERT CPM Network Diagram and detailed computations of contract time.</li> <li>D. Manpower Utilization Schedule</li> <li>E. Narrative Description of Construction Procedures and Methods</li> <li>F. Equipment Utilization Schedule</li> </ul>

***Section IV. General Conditions of Contract***

## 1. Scope of Contract

This Contract shall include all such items, although not specifically mentioned, that can be reasonably inferred as being required for its completion as if such items were expressly mentioned herein. All the provisions of RA No. 9184 and its 2016 revised IRR, including the Generic Procurement Manual, and associated issuances, constitute the primary source for the terms and conditions of the Contract, and thus, applicable in contract implementation. Herein clauses shall serve as the secondary source for the terms and conditions of the Contract.

This is without prejudice to Sections 74.1 and 74.2 of the 2016 revised IRR of RA No. 9184 allowing the GPPB to amend the IRR, which shall be applied to all procurement activities, the advertisement, posting, or invitation of which were issued after the effectivity of the said amendment.

## 2. Sectional Completion of Works

If sectional completion is specified in the **Special Conditions of Contract (SCC)**, references in the Conditions of Contract to the Works, the Completion Date, and the Intended Completion Date shall apply to any Section of the Works (other than references to the Completion Date and Intended Completion Date for the whole of the Works).

## 3. Possession of Site

4.1. The Procuring Entity shall give possession of all or parts of the Site to the Contractor based on the schedule of delivery indicated in the **SCC**, which corresponds to the execution of the Works. If the Contractor suffers delay or incurs cost from failure on the part of the Procuring Entity to give possession in accordance with the terms of this clause, the Procuring Entity's Representative shall give the Contractor a Contract Time Extension and certify such sum as fair to cover the cost incurred, which sum shall be paid by Procuring Entity.

4.2. If possession of a portion is not given by the above date, the Procuring Entity will be deemed to have delayed the start of the relevant activities. The resulting adjustments in contract time to address such delay may be addressed through contract extension provided under Annex "E" of the 2016 revised IRR of RA No. 9184.

## 4. The Contractor's Obligations

The Contractor shall employ the key personnel named in the Schedule of Key Personnel indicating their designation, in accordance with **ITB** Clause 10.3 and specified in the **BDS**, to carry out the supervision of the Works.

The Procuring Entity will approve any proposed replacement of key personnel only if their relevant qualifications and abilities are equal to or better than those of the personnel listed in the Schedule.

## 5. Performance Security

5.1. Within ten (10) calendar days from receipt of the Notice of Award from the Procuring Entity but in no case later than the signing of the contract by both parties, the successful Bidder shall furnish the performance security in any of the forms prescribed in Section 39 of the 2016 revised IRR.

5.2. The Contractor, by entering into the Contract with the Procuring Entity, acknowledges the right of the Procuring Entity to institute action pursuant to RA No. 3688 against any subcontractor be they an individual, firm, partnership, corporation, or association supplying the Contractor with labor, materials and/or equipment for the performance of this Contract.

## **6. Site Investigation Reports**

The Contractor, in preparing the Bid, shall rely on any Site Investigation Reports referred to in the SCC supplemented by any information obtained by the Contractor.

## **7. Warranty**

7.1. In case the Contractor fails to undertake the repair works under Section 62.2.2 of the 2016 revised IRR, the Procuring Entity shall forfeit its performance security, subject its property(ies) to attachment or garnishment proceedings, and perpetually disqualify it from participating in any public bidding. All payables of the GOP in his favor shall be offset to recover the costs.

7.2. The warranty against Structural Defects/Failures, except that occasioned-on force majeure, shall cover the period from the date of issuance of the Certificate of Final Acceptance by the Procuring Entity. Specific duration of the warranty is found in the SCC.

## **8. Liability of the Contractor**

Subject to additional provisions, if any, set forth in the SCC, the Contractor's liability under this Contract shall be as provided by the laws of the Republic of the Philippines.

If the Contractor is a joint venture, all partners to the joint venture shall be jointly and severally liable to the Procuring Entity.

## **9. Termination for Other Causes**

Contract termination shall be initiated in case it is determined *prima facie* by the Procuring Entity that the Contractor has engaged, before, or during the implementation of the contract, in unlawful deeds and behaviors relative to contract acquisition and implementation, such as, but not limited to corrupt, fraudulent, collusive, coercive, and obstructive practices as stated in ITB Clause 4.

## **10. Dayworks**

Subject to the guidelines on Variation Order in Annex "E" of the 2016 revised IRR of RA No. 9184, and if applicable as indicated in the SCC, the Day works rates in the Contractor's Bid shall be used for small additional amounts of work only when the Procuring Entity's Representative has given written instructions in advance for additional work to be paid for in that way.

## **11. Program of Work**

11.1. The Contractor shall submit to the Procuring Entity's Representative for approval the said Program of Work showing the general methods, arrangements, order, and timing for all the activities in the Works. The submissions of the Program of Work are indicated in the SCC.

11.2. The Contractor shall submit to the Procuring Entity's Representative for approval an updated Program of Work at intervals no longer than the period stated in the **SCC**. If the Contractor does not submit an updated Program of Work within this period, the Procuring Entity's Representative may withhold the amount stated in the **SCC** from the next payment certificate and continue to withhold this amount until the next payment after the date on which the overdue Program of Work has been submitted.

## **12. Instructions, Inspections and Audits**

The Contractor shall permit the GOP or the Procuring Entity to inspect the Contractor's accounts and records relating to the performance of the Contractor and to have them audited by auditors of the GOP or the Procuring Entity, as may be required.

## **13. Advance Payment**

The Procuring Entity shall, upon a written request of the Contractor which shall be submitted as a Contract document, make an advance payment to the Contractor in an amount not exceeding fifteen percent (15%) of the total contract price, to be made in lump sum, or at the most two installments according to a schedule specified in the **SCC**, subject to the requirements in Annex "E" of the 2016 revised IRR of RA No. 9184.

## **14. Progress Payments**

The Contractor may submit a request for payment for Work accomplished. Such requests for payment shall be verified and certified by the Procuring Entity's Representative/Project Engineer. Except as otherwise stipulated in the **SCC**, materials and equipment delivered on the site but not completely put in place shall not be included for payment.

## **15. Operating and Maintenance Manuals**

15.1. If required, the Contractor will provide "as built" Drawings and/or operating and maintenance manuals as specified in the **SCC**.

15.2. If the Contractor does not provide the Drawings and/or manuals by the dates stated above, or they do not receive the Procuring Entity's Representative's approval, the Procuring Entity's Representative may withhold the amount stated in the **SCC** from payments due to the Contractor.

***Section V. Special Conditions of Contract***

# Special Conditions of Contract

GCC Clause	
2	No sectional completion.
4.1	Upon receipt of Notice to Proceed.
6	The site investigation reports are: <i>[list here the required site investigation reports.]</i>
7.2	Five (5) years.
10	No day works are applicable to the contract.
11.1	The Contractor shall submit the Program of Work to the Procuring Entity's Representative within <i>[insert number]</i> days of delivery of the Notice of Award.
11.2	The amount to be withheld for late submission of an updated Program of Work is <i>[insert amount]</i> .
13	The amount of the advance payment is <i>15% of the total contract price and schedule of payment</i>
14	Materials and equipment delivered on the site but not completely put in place shall not be included for payment.
15.1	The date by which "as built" drawings are required is after completion of the project.
15.2	The amount to be withheld for failing to produce "as built" drawings and/or operating and maintenance manuals by the date required is <i>[amount in local currency]</i> .

## *Section VI. Specifications*



**Project Title:** Construction / Improvement of Various Infrastructure Projects (Public Buildings & Other Infrastructure Projects)

**Location:** Various Barangays, Tabaco City

**Contract ID No.** 024-04-2025-INFRA-PB

**Approved Budget for the Contract (ABC):** Php 42,251,932.50

**Duration:** 240 Calendar Days

Item No.	Project Descriptions	Approved Budget per Item (Php)
A	Public Buildings	
1	Construction of Multi-Purpose Hall at Tabiguian, Brgy. Tabiguian, Tabaco City	5,992,307.00
2	Construction of Health Center at Pinagbobong, Brgy. Pinagbobong, Tabaco City	4,993,800.00
3	Improvement of Evacuation Center & Disaster Operation Center, Brgys. San Antonio & Pawa, Tabaco City	3,500,000.00
4	Construction of Evacuation Center, Brgy. Buang, Tabaco City	9,988,300.00
5	Construction of Child Development Center, Brgy. Buhian, Tabaco City	4,101,178.52
6	Construction of Child Development Center, Sitio Malictay, Brgy. Hacienda, San Miguel Island, Tabaco City	4,788,884.70
B	Other Infrastructure Projects	
7	Desilting / Dredging of Tagas River, Cobo-Baranghawon Section (Upstream of Basud Bridge), Tabaco City	5,000,000.00
8	Construction of Water Supply System, Brgy. San Vicente, Tabaco City	3,887,462.28

## SCOPE OF WORK AND TECHNICAL SPECIFICATIONS

All works to be undertaken shall be in accordance with the plans and working drawings. It includes the furnishing of all materials, labor and equipment with supervision necessary for the complete construction of the said project.

### **ITEMS OF WORK INCLUDED**

#### **1. Construction of Multi-Purpose Hall at Tabiguian, Brgy. Tabiguian, Tabaco City**

##### **A. EARTHWORKS**

##### **Clearing & Grubbing**

- This item of work consists of clearing, grubbing, removing, and disposing of all vegetation and debris as designated in the Contract, except those objects that are designated to remain in place or are to be removed in consonance with other provisions of this Specification. The work shall also include the preservation from injury or defacement of all objects designated to remain.
- The engineer will establish the limits of work and designate all trees, shrubs, plants, and other things to remain. The Contractor shall preserve all objects designated to remain.

##### **Structure Excavation (Common Soil)**

- This item of work consists of excavation of material in accordance with this Specification and in conformity with the lines, grades and dimensions shown on the Plans or established by the Engineer. The Contractor shall notify the Engineer sufficiently in advance of the beginning of any excavation so that cross-sectional elevations and measurements may be taken on the undisturbed ground. The natural ground adjacent to the structure shall not be disturbed without permission of the Engineer.

##### **Embankment (From Structure Excavation)**

- This Item shall consist of the construction of embankment from excavated materials in accordance with the specification and in conformity with the lines, grades, and dimensions shown on the plans or established by the engineer.

#### **Embankment (From Borrow)**

- This item shall consist of the construction of embankment in accordance with this Specification and in conformity with the lines, grades and dimensions shown on the Plans or established by the Engineer.

#### **Gravel Fill**

- This item shall consist of placing 0.10m thick gravel fill in accordance with the specification and in conformity with the lines, grades and dimensions shown on the plans or established by the engineer.

### **B. PLAIN AND REINFORCED CONCRETE WORKS**

#### **Structural Concrete (Class A) 28 days**

- This item shall consist of furnishing, bending, placing and finishing concrete in all structures except pavements in accordance with this specification and conforming to the lines, grades, and dimensions shown on the Plans. Concrete shall consist of a mixture of Portland Cement, fine aggregate, coarse aggregate, admixture when specified, and water mixed in the proportions specified or approved by the Engineer.

#### **Reinforcing Steel (Deformed, Grade 40)**

- This item covers the supply of labor, materials and equipment necessary for the installation of reinforcing steel bars (Grade 40) of structures. (Please refer to plans).
- Reinforcing bars shall be standard commercial, deformed steel such as NSC steel or other locally available equivalent. Steel bars shall be free from rust scales. Splices in bars shall be made at critical points of maximum stress.

#### **Formworks and False Works**

- This item shall consist of designing, constructing and removing forms and falsework to temporarily support concrete, girders and other structural elements until the structure is completed to the point it can support itself.

### **C. FINISHING AND OTHER CIVIL WORKS**

#### **Soil Poisoning**

- Liquid termite control chemicals or toxicants shall be measured by actual number of liters used in the cordoning and drenching of lot areas and soil poisoning of granular fill or actual number of liters used in drenching wood surfaces, while powder chemical/toxicant shall be measured by kilograms applied to suspected subterranean termite mounds and tunnels. The quantity to be paid for shall be determined and accepted by the Engineer.
- At the time soil poisoning is to be applied, the soil to be treated shall be in friable condition with low moisture content so as to allow uniform distribution of the toxicant agents. Toxicant shall be applied at least twelve (12) hours prior to placement of concrete which shall be in contact with treated materials.
- Treatment of the soil on the exterior sides of the foundation walls, grade beams and similar structures shall be done prior to final grading and planting or landscaping work to avoid disturbance of the toxicant barriers by such operations.
- Areas to be covered by concrete slab shall be treated before placement of granular fill used as capillary water barrier at a rate of 12 liters per square meter with Type I working solution after it has been compacted and set to required elevation. Additional treatment shall be applied as follows:

1. In critical areas such as utility openings for pipes, conduits and ducts, apply additional treatment at the rate of 6 liters per linear meter in a strip 150 mm to 200 mm wide.

2. Along the exterior perimeter of the slab and under expansion joint, at the rate of 2.5 liters per linear meter in a strip 150 mm to 200 mm wide in a shallow trench.

#### **Catch Basin (Concrete)**

- This item shall consist of the construction of a catch basin in accordance with this Specification and in reasonably close conformity with the lines and grades shown on the Plans or as established by the Engineer.

#### **Sewer Line Works**

- Materials for sewerage system shall meet the requirements specified in the approved plans and shall comply with the requirements and provisions of the National Plumbing Code of the Philippines. Where PVC pipes and fittings are used, joints shall be secured with rubber "O" ring or solvent cement, as the case maybe. Oakum for joints in bell and spigot pipes shall be made from hemp fiber, braided or twisted and oil impregnated free from lumps, dirt and extraneous matter.

#### **Storm Drainage and Downspout**

- This item shall consist of furnishing all materials, equipment and labor for the complete installation of the storm drainage system to include all pipings, gutters, canal, catch basins, junction boxes, handholes, manholes, and other appurtenant structures, and sewerage system to include all sanitary sewer piping and septic vault where no public sewer exist, from the building to the point of discharge.

#### **Pre-painted Metal Sheets**

- This item shall consist of furnishing all pre-painted metal sheet materials, tools and equipment, plant including labor & equipment required in undertaking the proper installation complete as shown on the Plans and in accordance with this Specification.
- All pre-painted metal sheet and roofing accessories shall be oven baked painted true to profiles indicated on the Plans.

#### **Waterproofing (Cement-Based)**

- Furnish all materials, equipment, labor, plant and other facilities to complete all waterproofing works as shown on the plans and hereinafter specified.
- All works included under this division shall be subject to the General Conditions accompanying these specifications. The contractor is required to refer especially thereto.
- All concrete surface shall be wood toweled smooth, firm, dry, clean and free of loose or foreign materials and without any projects, indentation and other imperfections.
- Apply 2 coats of cold applied waterproofing and vertical wall to a height of 10" (250mm) unless otherwise shown on the drawings the area to be waterproofed.
- Pour all holes of exterior concrete hollow blocks with class B concrete (coarse, aggregate shall be of such size so that no voids are formed)
- The installation of waterproofing shall be done by an approved roofing contractor by the manufacturer.
- No substitution of materials shall be made unless authorized in writing by the Architect prior to starting the work of waterproofing.

### **Cement Plaster Finish**

- All concrete surfaces including those indicated as cement plaster finish on plan, in all interior walls and other concrete surfaces without specified finish, shall be done and applied in accordance with the following provisions.
- Immediately after the removal of forms, all projecting wires and bolts and other devices used for trying forms shall be cut off at least ½ cm. beneath the surface finishes. All holes voids, depressions and other defects shall be enlarged, roughened and repaired with mortar of the same grade as that even surface similar surface all to the satisfaction of the Engineer. Cracks shall be cut out and the sides dove tailed to a depth of at least 5cm. and shall thereafter with a mortar of the same grade as that in the original surface.
- The concrete mixture to be used for all plastering works must be CLASS “A” MORTARS – 1:3 by volume.

### **Cement Floor Finish**

- This item of work consists of cement floor finish in accordance with this Specification and in conformity with the lines, grades and dimensions shown on the Plans or established by the Engineer.

### **CHB Non Load Bearing, 100mm (Incl. RSB)**

- This item of work consists of furnishing and installation of 100mm thick CHB for all exterior/interior walls unless otherwise indicated. CHB shall be filled with mortar and ready to accept plaster finish.

### **CHB Non Load Bearing, 150mm (Incl. RSB)**

- This item of work consists of furnishing and installation of 150mm thick CHB for all exterior/interior walls unless otherwise indicated. CHB shall be filled with mortar and ready to accept plaster finish.

### **Structural Steel (Roof Framing)**

- Trusses and other roof framing shall be assembled, fitted and set to exact location and slope indicated on the Plans.

### **Electrical Works**

- The work to be done under this division of specifications consists of the fabrication, furnishing, delivery and installation, complete in all details of the electrical work, at the subject premises and all work material's incidental to the proper completion of the installation, except those portions of the work which are expressly stated to be done by other fields.
- All works hereunder shall comply with the requirements of the latest edition of the Philippine Electrical Code of the Philippines and the Rules and Regulations of the Local Electric Company.

## **D. OTHER GENERAL REQUIREMENTS**

### **Bunkhouse and Other Facilities**

- This item includes the construction of the temporary facilities for the engineer and a temporary bunkhouse for rental basis including the power and water supply for the storage of the materials / equipment needed for the whole duration of the project.

### **Project Billboard/Signboard**

- Fabrication & installation of plywood size (1.2m x 2.4m) standard billboard with coco lumber frame.

## **Occupational Construction Safety and Health**

- The contractor needs to establish safety goals and objectives develop and implement a written Safety and Health program. The contractor also needs to provide a Part-Time Safety Practitioner and First Aider who undergone training at DOLE/ Red cross respectively.

## **2. Construction of Health Center at Pinagbobong, Brgy. Pinagbobong, Tabaco City**

### **A. EARTHWORKS**

#### **Removal of Structures and Obstruction**

- This item of work includes removal of structures and obstruction using stake truck and manpower.

#### **Structural Excavation (Common Soil)**

- This item of work consists of excavation of material in accordance with this Specification and in conformity with the lines, grades and dimensions shown on the Plans or established by the Engineer. The Contractor shall notify the Engineer sufficiently in advance of the beginning of any excavation so that cross-sectional elevations and measurements any be taken on the undisturbed ground. The natural ground adjacent to the structure shall not be disturbed without permission of the Engineer.

#### **Backfilling of Excavated Materials**

- This item shall consist of all operations required to replace excavated and unsuitable materials to fill up depression to grade or to build up low areas in accordance with the approved Plans and Specifications.

#### **Embankment**

- This item shall consist of the construction of embankment in accordance with this Specification and in conformity with the lines, grades and dimensions shown on the Plans or established by the Engineer.

#### **Gravel Fill**

- This item shall consist of placing 0.10m thick gravel fill in accordance with the specification and in conformity with the lines, grades and dimensions shown on the plans or established by the engineer.

### **B. PLAIN AND REINFORCED CONCRETE WORKS**

#### **Structural Concrete (Class A) 28 days**

- This item shall consist of furnishing, bending, placing and finishing concrete in all structures except pavements in accordance with this specification and conforming to the lines, grades, and dimensions shown on the Plans. Concrete shall consist of a mixture of Portland Cement, fine aggregate, coarse aggregate, admixture when specified, and water mixed in the proportions specified or approved by the Engineer.

#### **Reinforcing Steel (Deformed, Grade 40)**

- This item covers the supply of labor, materials and equipment necessary for the installation of reinforcing steel bars (Grade 40) of structures. (Please refer to plans).
- Reinforcing bars shall be standard commercial, deformed steel such as NSC steel or other locally available equivalent. Steel bars shall be free from rust scales. Splices in bars shall be made at critical points of maximum stress.

#### **Formworks and False Works**

- This item shall consist of designing, constructing and removing forms and falsework to temporarily support concrete, girders and other structural elements until the structure is completed to the point it can support itself.

## **C. FINISHING AND OTHER CIVIL WORKS**

### **Catch Basin (CHB)**

- This item shall consist of the construction of a catch basin in accordance with this Specification and in reasonably close conformity with the lines and grades shown on the Plans or as established by the Engineer.

### **Sewer Line Works**

- Materials for sewerage system shall meet the requirements specified in the approved plans and shall comply with the requirements and provisions of the National Plumbing Code of the Philippines. Where PVC pipes and fittings are used, joints shall be secured with rubber "O" ring or solvent cement, as the case maybe. Oakum for joints in bell and spigot pipes shall be made from hemp fiber, braided or twisted and oil impregnated free from lumps, dirt and extraneous matter.

### **Storm Drainage and Downspout**

- This item shall consist of furnishing all materials, equipment and labor for the complete installation of the storm drainage system to include all pipings, gutters, canal, catch basins, junction boxes, handholes, manholes, and other appurtenant structures, and sewerage system to include all sanitary sewer piping and septic vault where no public sewer exist, from the building to the point of discharge.

### **Septic Vault**

- This item shall consist of the construction of septic tank in accordance with this Specifications and in conformity with the lines and grades shown on the Plans or as established by the Engineer.

### **Plumbing Fixtures**

- All works shall comply with the requirements and provisions of the National Plumbing Code of the Philippines.
- All fixtures shall be separately trapped. The trap shall be placed as near as possible to the fixtures
- No fixtures shall be double trapped.
- Horizontal waste lines shall be secured by hooks to the building frames or embedded in concrete whenever necessary.
- Horizontal waste line receiving the discharge from two or more fixtures shall be provided with the vents connected to the stack vents at least 1.20m from the floor level.
- Waterlines: potable waterline pipes shall be extended to all the fixture outlets and equipment from the gate valve near the riser.
- Provide and install complete floor drains shown on plans, brass or nickel plated 4" x 4" with the waste line, P-traps and vents.
- All pipes, fitting traps, fixtures, appurtenances and devices of plumbing and drainage system shall be inspected and approved by the architect/engineer to ensure compliance with the entire requirement of all codes and regulations referred in these specifications.
- Use sanitary pipes, fittings, accessories, materials and all work obviously necessary for the proper functioning of all specifications or indicated in the drawings are included in this work.

### **Cold Water Lines**

- The cold-water system shall be installed with a fall towards a main shutoff valve and drain. Ends of pipes and outlets shall be capped or plugged and left ready for future connections.

### **Carpentry and Joinery Works (Ceiling)**

- This item of work includes the installation of ceiling by using 4.5mm thick fiber cement board.
- The ceiling must be installed 100mm from the bottom of the roof beam.
- All materials shall be of approved high quality. Please refer to the plan for the complete details.

### **Doors and Windows**

- The item shall consist of furnishing all materials, hardware, plant, tools, labor and services necessary for complete fabrication and installation of wooden doors of the type and size as shown on the Plans and in accordance with the following specifications and applicable specifications under item 1003 on Carpentry and Joinery Works.

### **Pre-Painted Metal Sheets**

- This item shall consist of furnishing all pre-painted metal sheet materials, tools and equipment, plant including labor & equipment required in undertaking the proper installation complete as shown on the Plans and in accordance with this Specification.
- All pre-painted metal sheet and roofing accessories shall be oven baked painted true to profiles indicated on the Plans.

### **Waterproofing (Cement-Base)**

- Furnish all materials, equipment, labor, plant and other facilities to complete all waterproofing works as shown on the plans and hereinafter specified.
- All works included under this division shall be subject to the General Conditions accompanying these specifications. The contractor is required to refer especially thereto.
- All concrete surface shall be wood troweled smooth, firm, dry, clean and free of loose or foreign materials and without any projects, indentation and other imperfections.
- Apply 2 coats of cold applied waterproofing and vertical wall to a height of 10" (250mm) unless otherwise shown on the drawings the area to be waterproofed.
- Pour all holes of exterior concrete hollow blocks with class B concrete (coarse, aggregate shall be of such size so that no voids are formed)
- The installation of waterproofing shall be done by an approved roofing contractor by the manufacturer.
- No substitution of materials shall be made unless authorized in writing by the Architect prior to starting the work of waterproofing.

### **Tile Works**

- The process of firing the tiles infuses the glaze into the top layer of the clay of the tile. But, if no coating is applied on the tile before firing it, then it will be called an unglazed tile.
- Glazed tile shall be cushion-edge locally manufactured of the size or type and pattern shown on drawings and/or specified above. Use Granito or Mariwasa or another approved equivalent.

### **Cement Plaster Finish**

- All concrete surfaces including those indicated as cement plaster finish on plan, in all interior walls and other concrete surfaces without specified finish, shall be done and applied in accordance with the following provisions.

- Immediately after the removal of forms, all projecting wires and bolts and other devices used for trying forms shall be cut off at least ½ cm. beneath the surface finishes. All holes voids, depressions and other defects shall be enlarged, roughened and repaired with mortar of the same grade as that even surface similar surface all to the satisfaction of the Engineer. Cracks shall be cut out and the sides dove tailed to a depth of at least 5cm. and shall thereafter with a mortar of the same grade as that in the original surface.
- The concrete mixture to be used for all plastering works must be CLASS “A” MORTARS – 1:3 by volume.

#### **Painting Works (Masonry/Concrete)**

- The works covered by this section of the specification consist in the proper preparation of surface, furnishing of labor, material tools appliances, scaffolding and other necessary equipment and in the performing of all operations in connection with painting, varnishing and wall paper works, complete in accordance with the color scheme and specified therein.
- This section of the specification covers the complete painting and finishing of the wood surface, the painting of plasters, concrete, unfinished metal and other surfaces throughout the interior and exterior of the building.
- All paint materials shall meet the requirements of the specifications by the standardization committee on supplies and shall be delivered on the job in the original container, with labels intact and seal unbroken.
- Tinting colors for all paint shall be colors in oil, ground and pure in linseed oil and of the grade obtainable.
- Color pigments shall be used to produce the exact shades of paint, which shall conform of the approved color scheme of the building.
- Except as otherwise noted, color of the priming coat shall be lighter than the body coat and color of the body lighter than the finish coat. The first coat shall be white.
- Wood surfaces shall be thoroughly cleaned, smoothly had pressed and well sand papered before any paint or finish is applied.
- Before applying paint to concrete, cement plaster or other cement finishes, etc. This surface must be allowed to dry thoroughly.

#### **CHB Non Load Bearing, 100mm (Incl. RSB)**

- This item of work consists of furnishing and installation of 100mm thick CHB for all interior walls unless otherwise indicated. CHB shall be filled with mortar and ready to accept plaster finish.

#### **CHB Non Load Bearing, 150mm (Incl. RSB)**

- This item of work consists of furnishing and installation of 150mm thick CHB for all interior walls unless otherwise indicated. CHB shall be filled with mortar and ready to accept plaster finish.

#### **Railings**

- The mass of railing shall be included as structural steel unless the Bill of Quantities contains as pay item for bridge railing under Item 401, Railings. 202 The mass of steel grid flooring shall be computed separately.

#### **PWD Ramp**

- Walks, ramps, driveways and elsewhere indicated on the Plans as pea gravel washout finish - Shall be properly sloped and rendered under bed



## **D. ELECTRICAL**

### **Conduits, Boxes & Fittings**

- The work to be undertaken here under includes the furnishing of all labor, materials, equipment, tools and supervision to the project and to complete the good working condition of the electrical system for the proposed building.

### **Wires and Wiring Devices**

- This Item shall consist of the furnishing and installation of all wires and wiring devices consisting of electric wires and cables, wall switches, convenience receptacles, heavy duty receptables and other devices shown on the approved Plans but not mentioned in these specifications

### **Power Load Center, Switchgear and Panelboards**

- This Item shall consist of the furnishing and installation of the power load center unit substation or low voltage switchgear and distribution panel boards at the location shown or the approved Plans complete with transformer, circuit breakers, cabinets and all accessories, completely wired and ready for service.

### **Lighting & Fixture**

- All lighting fixtures and lamps are as specified and listed on lighting fixture schedule:  
32 set 15 watts LED Daylight bulb Recessed Circular downlight  
  
20 pcs 15 watts LED Bulb  
  
20 pcs 4"Ø Lighting Receptacle  
  
8 sets Emergency Light w/ 2-3w LED Bulb  
  
4 units Orbit Fan 10"

### **ACU Installation**

- This item shall consist of the furnishing and installation of the ACU window type and split types at the location shown or the approved Plans complete with transformer, circuit breakers, cabinets and all accessories, completely wired and ready for service.

## **E. OTHER MISCELLANEOUS WORKS**

### **Furniture and Fixture**

- This item of work includes the fabrication and installation of furniture and fixtures and shall be of the size and type indicated in the schedule and as specified therein.

### **Fabrication & Installation of Signages & Logo**

- This item of works includes the fabrication and installation of signages and logo and shall be of size and type indicated in the schedule and as specified therein.

## **F. OTHER GENERAL REQUIREMENTS**

### **Provision of Bunkhouse (Rental Basis) & Other Facilities**

- This item includes the construction of the temporary facilities for the engineer and a temporary bunkhouse for rental basis including the power and water supply for the storage of the materials / equipment needed for the whole duration of the project.

### **Project Billboard/Signboard**

- Fabrication & installation of plywood size (1.2m x 2.4m) standard billboard with coco lumber frame.

## **Occupational Safety and Health Program**

- The contractor needs to establish safety goals and objectives to develop and implement a written Safety and Health program. The contractor also needs to provide a Part-Time Safety Practitioner and First Aider who have undergone training at DOLE/ Red cross respectively.

### **3. Improvement of Evacuation Center & Disaster Operation Center, Brgys. San Antonio & Pawa, Tabaco City**

#### **I. IMPROVEMENT EVACUATION CENTER, BRGY. SAN ANTONIO, TABACO CITY**

##### **A. EARTHWORKS**

###### **Clearing and Grubbing**

- This item of work consists of clearing, grubbing, removing, and disposing of all vegetation and debris as designated in the Contract, except those objects that are designated to remain in place or are to be removed in consonance with other provisions of this Specification. The work shall also include the preservation from injury or defacement of all objects designated to remain.
- The engineer will establish the limits of work and designate all trees, shrubs, plants, and other things to remain. The Contractor shall preserve all objects designated to remain.

###### **Structure Excavation (Common Soil)**

- This item of work consists of excavation of material in accordance with this Specification and in conformity with the lines, grades and dimensions shown on the Plans or established by the Engineer. The Contractor shall notify the Engineer sufficiently in advance of the beginning of any excavation so that cross-sectional elevations and measurements may be taken on the undisturbed ground. The natural ground adjacent to the structure shall not be disturbed without permission of the Engineer.

###### **Embankment (From Structure Excavation)**

- This item shall consist of the construction of embankment from excavated materials in accordance with the specification and in conformity with the lines, grades and dimensions shown on the plans or established by the engineer.

###### **Gravel Fill**

- This item shall consist of placing 0.10m thick gravel fill in accordance with the specification and in conformity with the lines, grades and dimensions shown on the plans or established by the engineer.

##### **B. PLAIN AND REINFORCED CONCRETE WORKS**

###### **Structural Concrete (Class A) 28 days**

- This item shall consist of furnishing, bending, placing and finishing concrete in all structures except pavements in accordance with this specification and conforming to the lines, grades, and dimensions shown on the Plans. Concrete shall consist of a mixture of Portland Cement, fine aggregate, coarse aggregate, admixture when specified, and water mixed in the proportions specified or approved by the Engineer.

###### **Reinforcing Steel (Deformed, Grade 40)**

- This item covers the supply of labor, materials and equipment necessary for the installation of reinforcing steel bars (Grade 40) of structures. (Please refer to plans).
- Reinforcing bars shall be standard commercial, deformed steel such as NSC steel or other locally available equivalent. Steel bars shall be free from rust scales. Splices in bars shall be made at critical points of maximum stress.

### **Formworks and False Works**

- This item shall consist of designing, constructing and removing forms and falsework to temporarily support concrete, girders and other structural elements until the structure is completed to the point it can support itself.

### **C. FINISHING AND OTHER CIVIL WORKS**

#### **Solar LED Streetlight**

- Installation Solar LED Streetlights shall be done in accordance with the staking sheets, plans and specifications, and the construction drawings.
- The latest edition of the Philippine Electrical Code or DOE Roadway Lighting Guidelines shall be followed except where local regulations are more stringent, in which case local regulation shall govern.
- The location of street lighting posts shown on the drawing are approximate and the exact location shall be determined/establish by the engineer in the field.

#### **Jalousie Windows (Glass)**

- This Item shall consist of furnishing all jalousie glass window materials, labor, tools and equipment required in undertaking the proper installation as shown on the Plans and in accordance with this Specification.

#### **Glass and Glazing**

- This Item shall consist of furnishing all glass window materials, labor, tools and equipment required in undertaking the proper installation as shown on the Plans and in accordance with this Specification.

#### **Waterproofing (Cement-Based)**

- Furnish all materials, equipment, labor, plant and other facilities to complete all waterproofing works as shown on the plans and hereinafter specified.
- All works included under this division shall be subject to the General Conditions accompanying these specifications. The contractor is required to refer especially thereto.
- All concrete surface shall be wood troweled smooth, firm, dry, clean and free of loose or foreign materials and without any projects, indentation and other imperfections.
- Apply 2 coats of cold applied waterproofing and vertical wall to a height of 10" (250mm) unless otherwise shown on the drawings the area to be waterproofed.
- Pour all holes of exterior concrete hollow blocks with class B concrete (coarse, aggregate shall be of such size so that no voids are formed)
- The installation of waterproofing shall be done by an approved roofing contractor by the manufacturer.
- No substitution of materials shall be made unless authorized in writing by the Architect prior to starting the work of waterproofing.

#### **Cement Plaster Finish**

- All concrete surfaces including those indicated as cement plaster finish on plan, in all interior walls and other concrete surfaces without specified finish, shall be done and applied in accordance with the following provisions.
- Immediately after the removal of forms, all projecting wires and bolts and other devices used for trying forms shall be cut off at least ½ cm. beneath the surface finishes. All holes voids, depressions and other defects shall be enlarged, roughened and repaired with mortar of the same

grade as that even surface similar surface all to the satisfaction of the Engineer. Cracks shall be cut out and the sides dove tailed to a depth of at least 5cm. and shall thereafter with a mortar of the same grade as that in the original surface.

- The concrete mixture to be used for all plastering works must be CLASS “A” MORTARS – 1:3 by volume.

#### **CHB Non Load Bearing, 150mm (Incl. RSB)**

- This item of work consists of furnishing and installation of 150mm thick CHB for all interior walls unless otherwise indicated. CHB shall be filled with mortar and ready to accept plaster finish.

## **II. IMPROVEMENT OF DISASTER OPERATION CENTER, BRGY. PAWA, TABACO CITY**

#### **Epoxy Coating on Crack**

- This item of work consists of repairing cracks using epoxy coating, begin by thoroughly cleaning the crack area to remove any loose particles, dirt, or grease using a suitable concrete cleaner. Assess the crack size and depth to ensure adequate material preparation. Utilize concrete putty, carefully mixed as per manufacturer instructions, and apply it into the cracks using a putty knife for even distribution and penetration. Ensure the work area is at the recommended temperature and humidity levels to facilitate optimal curing. Skilled labor should be employed to ensure precise application and finishing, guaranteeing that no air pockets are trapped in the epoxy. After application, allow the epoxy to cure completely as per specified manufacturer guidelines, ensuring a durable and moisture-resistant repair suitable for both interior and exterior concrete surfaces. Proper protective equipment should be used throughout the process, and waste disposal should adhere to local environmental regulations.

#### **Removal of Structures and Obstruction**

- This item of work includes removal of structures and obstruction using stake truck and manpower.

#### **Storm Drainage and Downspout**

- This item shall consist of furnishing all materials, equipment and labor for the complete installation of the storm drainage system to include all pipings, gutters, canal, catch basins, junction boxes, handholes, manholes, and other appurtenant structures, and sewerage system to include all sanitary sewer piping and septic vault where no public sewer exist, from the building to the point of discharge.

#### **Ceiling (4.5mm, Metal Frame, Fiber Cement Board)**

- This item of work includes the installation of ceiling by using 4.5mm thick fiber cement board.
- The ceiling must be installed 100mm from the bottom of the roof beam.
- All materials shall be of approved high quality. Please refer to the plan for the complete details.

#### **Corrugated Metal Roofing**

- This item of work consists of furnishing and installation of #24 Corrugated G.I. Sheet x 12' pre-painted and Ga. 24 pre painted ridge roll including labor & equipment required in undertaking the proper installation complete as shown on the Plans and in accordance with this Specification.

#### **Waterproofing (Cement-based)**

- Furnish all materials, equipment, labor, plant and other facilities to complete all waterproofing works as shown on the plans and hereinafter specified.

- All works included under this division shall be subject to the General Conditions accompanying these specifications. The contractor is required to refer especially thereto.
- All concrete surface shall be wood troweled smooth, firm, dry, clean and free of loose or foreign materials and without any projects, indentation and other imperfections.
- Apply 2 coats of cold applied waterproofing and vertical wall to a height of 10" (250mm) unless otherwise shown on the drawings the area to be waterproofed.
- Pour all holes of exterior concrete hollow blocks with class B concrete (coarse, aggregate shall be of such size so that no voids are formed)
- The installation of waterproofing shall be done by an approved roofing contractor by the manufacturer.
- No substitution of materials shall be made unless authorized in writing by the Architect prior to starting the work of waterproofing.

### **Cement Plaster Finish**

- All concrete surfaces including those indicated as cement plaster finish on plan, in all interior walls and other concrete surfaces without specified finish, shall be done and applied in accordance with the following provisions.
- Immediately after the removal of forms, all projecting wires and bolts and other devices used for trying forms shall be cut off at least ½ cm. beneath the surface finishes. All holes voids, depressions and other defects shall be enlarged, roughened and repaired with mortar of the same grade as that even surface similar surface all to the satisfaction of the Engineer. Cracks shall be cut out and the sides dove tailed to a depth of at least 5cm. and shall thereafter with a mortar of the same grade as that in the original surface.
- The concrete mixture to be used for all plastering works must be CLASS "A" MORTARS – 1:3 by volume.

### **Painting Works**

- The works covered by this section of the specification consist in the proper preparation of surface, furnishing of labor, material tools appliances, scaffolding and other necessary equipment and in the performing of all operations in connection with painting, varnishing and wall paper works, complete in accordance with the color scheme and specified therein.
- This section of the specification covers the complete painting and finishing of the wood surface, the painting of plasters, concrete, unfinished metal and other surfaces throughout the interior and exterior of the building
- All paint materials shall meet the requirements of the specifications by the standardization committee on supplies and shall be delivered on the job in the original container, with labels intact and seal unbroken.
- Tinting colors for all paint shall be colors in oil, ground and pure in linseed oil and of the grade obtainable.
- Color pigments shall be used to produce the exact shades of paint, which shall conform of the approved color scheme of the building.
- Except as otherwise noted, color of the priming coat shall be lighter than the body coat and color of the body lighter than the finish coat. The first coat shall be white.
- Wood surfaces shall be thoroughly cleaned, smoothly had pressed and well sand papered before any paint or finish is applied.

- Before applying paint to concrete, cement plaster or other cement finishes, etc. This surface must be allowed to dry thoroughly.

### **Polycarbonate Panels**

- This item of works consists of proper installation of the polycarbonate panels. Begin by ensuring that the structure to receive the panels is properly aligned and suitable for installation. Cut the Twinwall Polycarbonate Roofing panels to the required dimensions, ensuring precise fits. Position the panels onto the structure, taking care to maintain appropriate overlaps and alignment for effective load distribution and weatherproofing. Secure the panels using Tek screws, which should be driven through pre-drilled holes to prevent any potential cracking. Use spacers if necessary to allow for thermal expansion. Seal all joints, edges, and overlaps with a high-quality Silicon Sealant to ensure optimal weather resistance and durability. This sealant should be applied smoothly and evenly to avoid gaps. Throughout the installation, ensure that the materials are handled with care to prevent surface scratches or damage and that protective equipment is employed. Finally, inspect the installation for stability and waterproofing integrity, correcting any discrepancies with additional sealant or fasteners as needed.

### **CHB Non Load Bearing, 150mm (Incl. RSB)**

- This item of work consists of furnishing and installation of 100mm / 150mm thick CHB for all interior walls unless otherwise indicated. CHB shall be filled with mortar and ready to accept plaster finish.

### **Structural Steel**

- Set and install structural steel angels properly aligned, plumb, level, square true to profile section and rigidly anchored with adjacent concrete surface walls.
- Allow all adjacent items of work to be completed before any installation work is started except the installation of structural steel angels.
- Assemble rolling up doors in accordance with the manufacturer's instruction manual or as indicated in the shop drawing approved.
- All anchors and insets for guide, brackets and other accessories shall be located accurately

### **Conduits, Boxes and Fittings**

- The work to be undertaken here under includes the furnishing of all labor, materials, equipment, tools and supervision to the project and to complete the good working condition of the electrical system for the proposed building.

### **Wires and Wiring Devices**

- This Item shall consist of the furnishing and installation of all wires and wiring devices consisting of electric wires and cables, wall switches, convenience receptacles, heavy duty receptables and other devices shown on the approved Plans but not mentioned in these specifications

### **Lighting Fixtures and Lamp**

- All lighting fixtures and lamps are as specified and listed on lighting fixture schedule:
  - 3 boxed of LED COB Strip Light
  - 8 pcs of 15 watts LED Downlight Recessed
  - 1 pc of 3 rings rectangle ceiling light (center light)
  - 1 pc of tracklight (5 luminaires) warm white

## **III. OTHER GENERAL REQUIREMENTS**

### **Bunkhouse and Other Facilities**

- This item includes the construction of the temporary facilities for the engineer and a temporary bunkhouse for rental basis including the power and water supply for the storage of the materials / equipment needed for the whole duration of the project.

#### **Project Billboard/Signboard**

- Fabrication & installation of plywood size (1.2m x 2.4m) standard billboard with coco lumber frame.

#### **Occupational Construction Safety and Health**

- The contractor needs to establish safety goals and objectives develop and implement a written Safety and Health program. The contractor also needs to provide a Part-Time Safety Practitioner and First Aider who undergone training at DOLE/ Red cross respectively.

### **4. Construction of Evacuation Center, Brgy. Buang, Tabaco City**

#### **A. EARTHWORKS**

##### **Structures Excavation (Common Soil)**

- This item of work consists of excavation of material in accordance with this Specification and in conformity with the lines, grades and dimensions shown on the Plans or established by the Engineer. The Contractor shall notify the Engineer sufficiently in advance of the beginning of any excavation so that cross-sectional elevations and measurements any be taken on the undisturbed ground. The natural ground adjacent to the structure shall not be disturbed without permission of the Engineer.

##### **Embankment (from Structure Excavation)**

- This Item shall consist of the construction of embankment from excavated materials in accordance with the specification and in conformity with the lines, grades and dimensions shown on the plans or established by the engineer.

##### **Embankment (from Common Borrow)**

- This item shall consist of the construction of embankment in accordance with this Specification and in conformity with the lines, grades and dimensions shown on the Plans or established by the Engineer.

##### **Gravel Fill**

- This item shall consist of placing 0.10m thick gravel fill in accordance with the specification and in conformity with the lines, grades and dimensions shown on the plans or established by the engineer.

#### **B. PLAIN AND REINFORCED CONCRETE WORKS**

##### **Structural Concrete (Class A) 28 days**

- This item shall consist of furnishing, bending, placing and finishing concrete in all structures except pavements in accordance with this specification and conforming to the lines, grades, and dimensions shown on the Plans. Concrete shall consist of a mixture of Portland Cement, fine aggregate, coarse aggregate, admixture when specified, and water mixed in the proportions specified or approved by the Engineer.

##### **Reinforcing Steel (Deformed, Grade 40)**

- This item covers the supply of labor, materials and equipment necessary for the installation of reinforcing steel bars (Grade 40) of structures. (Please refer to plans).
- Reinforcing bars shall be standard commercial, deformed steel such as NSC steel or other locally available equivalent. Steel bars shall be free from rust scales. Splices in bars shall be made at critical points of maximum stress.

### **Formworks and False Works**

- This item shall consist of designing, constructing and removing forms and falsework to temporarily support concrete, girders and other structural elements until the structure is completed to the point it can support itself.

### **C. FINISHING AND OTHER CIVIL WORKS**

#### **Soil Poisoning**

- Liquid termite control chemicals or toxicants shall be measured by actual number of liters used in the cordoning and drenching of lot areas and soil poisoning of granular fill or actual number of liters used in drenching wood surfaces, while powder chemical/toxicant shall be measured by kilograms applied to suspected subterranean termite mounds and tunnels. The quantity to be paid for shall be determined and accepted by the Engineer.
- At the time soil poisoning is to be applied, the soil to be treated shall be in friable condition with low moisture content so as to allow uniform distribution of the toxicant agents. Toxicant shall be applied at least twelve (12) hours prior to placement of concrete which shall be in contact with treated materials.
- Treatment of the soil on the exterior sides of the foundation walls, grade beams and similar structures shall be done prior to final grading and planting or landscaping work to avoid disturbance of the toxicant barriers by such operations.
- Areas to be covered by concrete slab shall be treated before placement of granular fill used as capillary water barrier at a rate of 12 liters per square meter with Type I working solution after it has been compacted and set to required elevation. Additional treatment shall be applied as follows:
  1. In critical areas such as utility openings for pipes, conduits and ducts, apply additional treatment at the rate of 6 liters per linear meter in a strip 150 mm to 200 mm wide.
  2. Along the exterior perimeter of the slab and under expansion joint, at the rate of 2.5 liters per linear meter in a strip 150 mm to 200 mm wide in a shallow trench.

#### **Catch Basin (CHB)**

- This item shall consist of the construction of catch basin in accordance with this Specification and in reasonably close conformity with the lines and grades shown on the Plans or as established by the Engineer.

#### **Septic Vault**

- This item shall consist of the construction of septic tank in accordance with this Specifications and in conformity with the lines and grades shown on the Plans or as established by the Engineer.

#### **Storm Drainage and Downspout**

- This item shall consist of furnishing all materials, equipment and labor for the complete installation of the storm drainage system to include all pipings, gutters, canal, catch basins, junction boxes, handholes, manholes, and other appurtenant structures, and sewerage system to include all sanitary sewer piping and septic vault where no public sewer exist, from the building to the point of discharge.

#### **Sewer Line Works**

- Materials for sewerage system shall meet the requirements specified in the approved plans and shall comply with the requirements and provisions of the National Plumbing Code of the Philippines. Where PVC pipes and fittings are used, joints shall be secured with rubber "O" ring or solvent cement, as the case maybe. Oakum for joints in bell and spigot pipes shall be made from hemp fiber, braided or twisted and oil impregnated free from lumps, dirt and extraneous matter.



### **Plumbing Fixtures**

- All fittings and trimmings for fixtures shall be chromium-plated and polished brass unless otherwise approved. Exposed traps and supply pipes for fixtures shall be connected to the roughing in, piping system at the wall unless otherwise indicated on the Plans. Built-in fixtures shall be watertight with provision of water supply and drainage outlet, fittings and trap seal. Unless otherwise specified, all plumbing fixtures shall be made of vitreous china complete with fittings.

### **Cold Water Lines**

- The cold-water system shall be installed with a fall towards a main shutoff valve and drain. Ends of pipes and outlets shall be capped or plugged and left ready for future connections.

### **CHB Non Loading Bearing, 150mm (incl. RSB)**

- This item of work consists of furnishing and installation of 150mm thick CHB for all interior walls unless otherwise indicated. CHB shall be filled with mortar and ready to accept plaster finish.

### **Louver Window**

- The item shall consist of furnishing all materials, hardware, plant, tools, labor and services necessary for complete fabrication and installation of louver windows of the type and size as shown on the Plans.

### **Cement Plaster Finish**

- This item shall consist of furnishing all cement plaster materials, labor, tools and equipment required in undertaking cement plaster finish as shown on the Plans and in accordance with this Specification. All concrete surfaces including those indicated as cement plaster on drawings, in all interior walls and other concrete surfaces without specified finish, shall be done and applied in accordance with the Plans or established by the Engineer.

### **Cement Floor Finish**

- This item of work consists of cement floor finish in accordance with this Specification and in conformity with the lines, grades and dimensions shown on the Plans or established by the Engineer.

### **Unglazed Tiles**

- The process of firing the tiles infuses the glaze into the top layer of the clay of the tile. But, if no coating is applied on the tile before firing it, then it will be called an unglazed tile.

### **Glazed Tiles**

- Glazed tile shall be cushion-edge locally manufactured of the size or type and pattern shown on drawings and/or specified above. Use Granito or Mariwasa or another approved equivalent.

### **Tactiles (PWD Ramp)**

- This item of work includes the installation of 20cm x 20cm tactiles for PWD Ramp.

### **Steel Door and Frames**

- The item shall consist of furnishing all materials, hardware, plant, tools, labor and services necessary for complete fabrication and installation of steel doors and frames of the type and size as shown on the Plans.

### **Hollow Core Flush Door**

- The item shall consist of furnishing all materials, hardware, plant, tools, labor and services necessary for complete fabrication and installation of hollow core flush doors of the type and size as shown on the Plans

### **Jalousie Windows (Wood)**

- The item shall consist of furnishing all materials, hardware, plant, tools, labor and services necessary for complete fabrication and installation of wooden jalousie windows of the type and size as shown on the Plans

### **Steel Window (Security Grilles)**

- The item shall consist of furnishing all materials, hardware, plant, tools, labor and services necessary for complete fabrication and installation of steel windows (security grilles) of the type and size as shown on the Plans

### **Railings**

- This item shall consist of furnishing and constructing posts and guardrails of the types called for in the contract and in accordance with this Specification, at the locations, and in conformity with the lines and grades shown on the Plans, or as required by the Engineer.

### **Ceiling Works (Metal Frame on Marine Plywood)**

- This item of work includes the installation of ceiling by using 4.5mm thick fiber cement board.
- The ceiling must be installed 100mm from the bottom of the roof beam.
- All materials shall be of approved high quality. Please refer to the plan for the complete details.

### **Painting Works (Masonry / Concrete)**

- The works covered by this section of the specification consist in the proper preparation of surface, furnishing of labor, material tools appliances, scaffolding and other necessary equipment and in the performing of all operations in connection with painting, varnishing and wall paper works, complete in accordance with the color scheme and specified therein.
- This section of the specification covers the complete painting and finishing of the wood surface, the painting of plasters, concrete, unfinished metal and other surfaces throughout the interior and exterior of the building.
- All paint materials shall meet the requirements of the specifications by the standardization committee on supplies and shall be delivered on the job in the original container, with labels intact and seal unbroken.
- Tinting colors for all paint shall be colors in oil, ground and pure in linseed oil and of the grade obtainable.
- Color pigments shall be used to produce the exact shades of paint, which shall conform of the approved color scheme of the building.
- Except as otherwise noted, color of the priming coat shall be lighter than the body coat and color of the body lighter than the finish coat. The first coat shall be white.
- Before applying paint to concrete, cement plaster or other cement finishes, etc. This surface must be allowed to dry thoroughly.

### **Painting Works (Wooden Surfaces)**

- The works covered by this section of the specification consist in the proper preparation of surface, furnishing of labor, material tools appliances, scaffolding and other necessary equipment and in the performing of all operations in connection with painting, varnishing and wall paper works, complete in accordance with the color scheme and specified therein.
- This section of the specification covers the complete painting and finishing of the wood surface, the painting of plasters, concrete, unfinished metal and other surfaces throughout the interior and exterior of the building.

- All paint materials shall meet the requirements of the specifications by the standardization committee on supplies and shall be delivered on the job in the original container, with labels intact and seal unbroken.
- Tinting colors for all paint shall be colors in oil, ground and pure in linseed oil and of the grade obtainable.
- Color pigments shall be used to produce the exact shades of paint, which shall conform of the approved color scheme of the building.
- Except as otherwise noted, color of the priming coat shall be lighter than the body coat and color of the body lighter than the finish coat. The first coat shall be white.
- Wood surfaces shall be thoroughly cleaned, smoothly had pressed and well sand papered before any paint or finish is applied.

#### **Waterproofing (Cement-Base)**

- This Item shall consist of furnishing all waterproofing materials, labor, tools, equipment and other facilities and undertaking the proper installation works required as shown on the Plans and in accordance with this Specification.
- Cement-base waterproofing powder mix shall be cement-base, aggregate type, heavy duty, water-proof coating for reinforced concrete surface and masonry exposed to water. The aggregates are graded and sized so as to mesh perfectly and are selected for purity, hardness, strength and are non-metallic. When mixed with other ingredients are free flowing, water-proof coatings that possesses strength durability and density.
- Additive binders shall be of special formulation of acrylic polymers and modifiers in liquid form used as additive with cement-base powder mix that improves adhesion and mechanical properties.
- Water shall be clean, clear and potable.

### **D. ELECTRICAL WORKS**

#### **Conduits, Boxes & Fittings**

- The work to be undertaken here under includes the furnishing of all labor, materials, equipment, tools and supervision to the project and to complete the good working condition of the electrical system for the proposed building.

#### **Wires and Wiring Devices**

- This item shall consist of the furnishing and installation of all wires and wiring devices consisting of electric wires and cables, wall switches, convenience receptacles, heavy duty receptacles and other devices shown on the approved Plans but not mentioned in these specifications

#### **Panelboard with Main & Branch Breakers**

- Panel boards shall conform to the schedule of panel boards as shown on the approved Plans with respect to supply characteristics, rating of main lugs or main circuit breaker, number and ratings and capacities of branch circuit breakers.
- Panel boards shall consist of a factory completed dead front assembly mounted in an enclosing flush type cabinet consisting of code gauge galvanized sheet steel box with trim and door. Each door shall be provided with catch lock and two (2) keys. Panel boards shall be provided with - directories and shall be printed to indicate load served by each circuit.
- Panel board cabinets and trims shall be suitable for the type of mounting shown on the approved Plans. The inside and outside of panel board cabinets and trims shall be factory painted with one rust proofing primer coat and two finish shop coats of pearl-gray enamel paint.

- Main and branch circuit breakers for panel boards shall have the rating, capacity and number of poles as shown on the approved Plans. Breakers shall be thermal magnetic type. Multiple breakers shall be of the common trip type having a single operating handle. For 50-ampere breaker or less, it may consist of single-pole breaker permanently assembled at the factory into a multi-pole unit.

#### **Lighting Fixtures & Lamps**

- All lighting fixtures and lamps are as specified and listed on lighting fixture schedule:
  - 18W, LED T8 Batten Fixture, Daylight
  - 18W, Surface Mount LED Down Light, Square
  - 12W, Surface Mount LED Down Light, Square
  - 6W, Surface Mount LED Down Light, Square

#### **Grounding System**

- All grounding system installation shall be executed in accordance with the approved plans.
- Grounding system shall include building perimeter ground wires, ground rods, clamps, connectors, ground wells and ground wiretap as shown in the approved design.

### **E. MECHANICAL WORKS**

#### **Oscillating (Stand Fan)**

- This item of works includes the installation of stand fans and shall be of size and type indicated in the schedule and as specified therein.

#### **Oscillating (Wall Fan)**

- This item of works includes the installation of wall fans and shall be of size and type indicated in the schedule and as specified therein.

#### **Fire Alarm System**

- This item shall consist of furnishing and installation of Fire Protection Sprinkler System (AFSS), refer to the plans specified:
  - 4 units 10lbs Fire Extinguisher Brand New ABC Chemical with Frame
  - 4 sets Smoke Detector w/ Base, battery operated, 9volts
  - 1 set Fire Alarm Bell, 6" diameter
  - 1 set Fire Alarm Manual Station

### **F. OTHER MISCELLANEOUS WORKS**

#### **Fabrication & Installation of Signages & Logo / Building Marker**

- This item of works includes the fabrication and installation of signages and logo and shall be of size and type indicated in the schedule and as specified therein.

### **G. OTHER GENERAL REQUIREMENTS**

#### **Bunkhouse (Rental Basis) and Other Facilities**

- This item includes the construction of the temporary facilities for the engineer and a temporary bunkhouse for rental basis including the power and water supply for the storage of the materials / equipment needed for the whole duration of the project.

#### **Project Billboard/Signboard**

- Fabrication & installation of plywood size (1.2m x 2.4m) standard billboard with coco lumber frame.

## **Occupational Construction Safety and Health**

- The contractor needs to establish safety goals and objectives develop and implement a written Safety and Health program. The contractor also needs to provide a Part-Time Safety Practitioner and First Aider who undergone training at DOLE/ Red cross respectively.

### **5. Construction of Child Development Center, Brgy. Buhian, Tabaco City**

#### **A. EARTHWORKS**

##### **Clearing and Grubbing**

- This item of work consists of clearing, grubbing, removing, and disposing all vegetation and debris as designated in the Contract, except those objects that are designated to remain in place or are to be removed in consonance with other provisions of this Specification. The work shall also include the preservation from injury or defacement of all objects designated to remain.
- The engineer will establish the limits of work and designate all trees, shrubs, plants, and other things to remain. The Contractor shall preserve all objects designated to remain.

##### **Structure Excavation (Common Soil)**

- This item of work consists of excavation of material in accordance with this Specification and in conformity with the lines, grades and dimensions shown on the Plans or established by the Engineer. The Contractor shall notify the Engineer sufficiently in advance of the beginning of any excavation so that cross-sectional elevations and measurements any be taken on the undisturbed ground. The natural ground adjacent to the structure shall not be disturbed without permission of the Engineer.

##### **Embankment (From Structure Excavation)**

- This Item shall consist of the construction of embankment from excavated materials in accordance with the specification and in conformity with the lines, grades and dimensions shown on the plans or established by the engineer.

##### **Embankment (From Borrow)**

- This item shall consist of the construction of embankment in accordance with this Specification and in conformity with the lines, grades and dimensions shown on the Plans or established by the Engineer.

##### **Gravel Fill**

- This item shall consist of placing 0.10m thick gravel fill in accordance with the specification and in conformity with the lines, grades and dimensions shown on the plans or established by the engineer.

#### **B. PLAIN AND REINFORCED CONCRETE WORKS**

##### **Structural Concrete (Class A) 28 days**

- This item shall consist of furnishing, bending, placing and finishing concrete in all structures except pavements in accordance with this specification and conforming to the lines, grades, and dimensions shown on the Plans. Concrete shall consist of a mixture of Portland Cement, fine aggregate, coarse aggregate, admixture when specified, and water mixed in the proportions specified or approved by the Engineer.

##### **Reinforcing Steel (Deformed)**

- This item covers the supply of labor, materials and equipment necessary for the installation of reinforcing steel bars (Grade 40) of structures. (Please refer to plans).

- Reinforcing bars shall be standard commercial, deformed steel such as NSC steel or other locally available equivalent. Steel bars shall be free from rust scales. Splices in bars shall be made at critical points of maximum stress.

#### **Formworks and False Works**

- This item shall consist of designing, constructing and removing forms and falsework to temporarily support concrete, girders and other structural elements until the structure is completed to the point it can support itself.

### **C. FINISHING AND OTHER CIVIL WORKS**

#### **Soil Poisoning**

- Liquid termite control chemicals or toxicants shall be measured by actual number of liters used in the cordoning and drenching of lot areas and soil poisoning of granular fill or actual number of liters used in drenching wood surfaces, while powder chemical/toxicant shall be measured by kilograms applied to suspected subterranean termite mounds and tunnels. The quantity to be paid for shall be determined and accepted by the Engineer.
- At the time soil poisoning is to be applied, the soil to be treated shall be in friable condition with low moisture content so as to allow uniform distribution of the toxicant agents. Toxicant shall be applied at least twelve (12) hours prior to placement of concrete which shall be in contact with treated materials.
- Treatment of the soil on the exterior sides of the foundation walls, grade beams and similar structures shall be done prior to final grading and planting or landscaping work to avoid disturbance of the toxicant barriers by such operations.
- Areas to be covered by concrete slab shall be treated before placement of granular fill used as capillary water barrier at a rate of 12 liters per square meter with Type I working solution after it has been compacted and set to required elevation. Additional treatment shall be applied as follows:
  1. In critical areas such as utility openings for pipes, conduits and ducts, apply additional treatment at the rate of 6 liters per linear meter in a strip 150 mm to 200 mm wide.
  2. Along the exterior perimeter of the slab and under expansion joint, at the rate of 2.5 liters per linear meter in a strip 150 mm to 200 mm wide in a shallow trench.

#### **Catch Basin (CHB)**

- This item shall consist of the construction of catch basin in accordance with this Specification and in reasonably close conformity with the lines and grades shown on the Plans or as established by the Engineer.

#### **Septic Tank**

- This item shall consist of the construction of septic tank in accordance with this Specifications and in conformity with the lines and grades shown on the Plans or as established by the Engineer.

#### **Sewer Line Works**

- Materials for sewerage system shall meet the requirements specified in the approved plans and shall comply with the requirements and provisions of the National Plumbing Code of the Philippines. Where PVC pipes and fittings are used, joints shall be secured with rubber "O" ring or solvent cement, as the case maybe. Oakum for joints in bell and spigot pipes shall be made from hemp fiber, braided or twisted and oil impregnated free from lumps, dirt and extraneous matter.

#### **Storm Drainage and Downspout**

- This item shall consist of furnishing all materials, equipment and labor for the complete installation of the storm drainage system to include all pipings, gutters, canal, catch basins,

junction boxes, handholes, manholes, and other appurtenant structures, and sewerage system to include all sanitary sewer piping and septic vault where no public sewer exist, from the building to the point of discharge.

### **Plumbing Works**

- All works shall comply with the requirements and provisions of the National Plumbing Code of the Philippines.
- All fixtures shall be separately trapped. The trap shall be placed as near as possible to the fixtures
- No fixtures shall be double trapped.
- Horizontal waste lines shall be secured by hooks to the building frames or embedded in concrete whenever necessary.
- Horizontal waste line receiving the discharge from two or more fixtures shall be provided with the vents connected to the stack vents at least 1.20m from the floor level.
- Waterlines: potable waterline pipes shall be extended to all the fixture outlets and equipment from the gate valve near the riser.
- Provide and install complete floor drains shown on plans, brass or nickel plated 4" x 4" with the waste line, P-traps and vents.
- All pipes, fitting traps, fixtures, appurtenances and devices of plumbing and drainage system shall be inspected and approved by the architect/engineer to ensure compliance with the entire requirement of all codes and regulations referred in these specifications.

### **Ceiling (4.5mm, Metal Frame, Fiber Cement Board)**

- This item of work includes the installation of ceiling by using 4.5mm thick fiber cement board.
- The ceiling must be installed 100mm from the bottom of the roof beam.
- All materials shall be of approved high quality. Please refer to the plan for the complete details.

### **Steel Windows**

- The item shall consist of furnishing all materials, hardware, plant, tools, labor and services necessary for complete fabrication and installation of steel windows of the type and size as shown on the Plans

### **Doors (Wooden Panel / Flush)**

- The item shall consist of furnishing all materials, hardware, plant, tools, labor and services necessary for complete fabrication and installation of wooden panel door and flush door of the type and size as shown on the Plans

### **Doors and Window Screen**

- The item shall consist of furnishing all materials, hardware, plant, tools, labor and services necessary for complete fabrication and installation of door and window screen of the type and size as shown on the Plans

### **Waterproofing (Cement-Base)**

- This Item shall consist of furnishing all waterproofing materials, labor, tools, equipment and other facilities and undertaking the proper installation works required as shown on the Plans and in accordance with this Specification.
- Cement-base waterproofing powder mix shall be cement-base, aggregate type, heavy duty, water-proof coating for reinforced concrete surface and masonry exposed to water. The aggregates are graded and sized so as to mesh perfectly and are selected for purity, hardness, strength and are non-metallic. When mixed with other ingredients are free flowing, water-proof coatings that possesses strength durability and density.
- Additive binders shall be of special formulation of acrylic polymers and modifiers in liquid form used as additive with cement-base powder mix that improves adhesion and mechanical properties.
- Water shall be clean, clear and potable.

### **Unglazed Tiles**

- The process of firing the tiles infuses the glaze into the top layer of the clay of the tile. But, if no coating is applied on the tile before firing it, then it will be called an unglazed tile.

### **Glazed Tiles**

- Glazed tile shall be cushion-edge locally manufactured of the size or type and pattern shown on drawings and/or specified above. Use Granito or Mariwasa or another approved equivalent.

### **Tactiles (PWD Ramp)**

- This item of work includes the installation of 20cm x 20cm tactiles for PWD Ramp.

### **Cement Plaster Finish**

- All concrete surfaces including those indicated as cement plaster finish on plan, in all interior walls and other concrete surfaces without specified finish, shall be done and applied in accordance with the following provisions.
- Immediately after the removal of forms, all projecting wires and bolts and other devices used for trying forms shall be cut off at least ½ cm. beneath the surface finishes. All holes voids, depressions and other defects shall be enlarged, roughened and repaired with mortar of the same grade as that even surface similar surface all to the satisfaction of the Engineer. Cracks shall be cut out and the sides dove tailed to a depth of at least 5cm. and shall thereafter with a mortar of the same grade as that in the original surface.
- The concrete mixture to be used for all plastering works must be CLASS “A” MORTARS – 1:3 by volume.

### **Cement Floor Finish**

- This item of work consists of cement floor finish in accordance with this Specification and in conformity with the lines, grades and dimensions shown on the Plans or established by the Engineer.

### **CHB Non Load Bearing, 100mm (Incl. RSB)**

- This item of work consists of furnishing and installation of 100mm thick CHB for all exterior/interior walls unless otherwise indicated. CHB shall be filled with mortar and ready to accept plaster finish.

### **CHB Non Load Bearing, 150mm (Incl. RSB)**

- This item of work consists of furnishing and installation of 150mm thick CHB for all exterior/interior walls unless otherwise indicated. CHB shall be filled with mortar and ready to accept plaster finish.

### **Railings**

- This item shall consist of furnishing and constructing posts and guardrails of the types called for in the contract and in accordance with this Specification, at the locations, and in conformity with the lines and grades shown on the Plans, or as required by the Engineer.

### **Carpentry Works**

- This item covers the supply of labor, materials and equipment necessary for the fabrication of White Board, Kitchen Cabinet, and Tables & Chair. All materials shall be of approved high quality. Please refer to the plan for the complete details.

### **Painting Works**

- The works covered by this section of the specification consist in the proper preparation of surface, furnishing of labor, material tools appliances, scaffolding and other necessary equipment and in the performing of all operations in connection with painting, varnishing and wall paper works, complete in accordance with the color scheme and specified therein.



- This section of the specification covers the complete painting and finishing of the wood surface, the painting of plasters, concrete, unfinished metal and other surfaces throughout the interior and exterior of the building.
- All paint materials shall meet the requirements of the specifications by the standardization committee on supplies and shall be delivered on the job in the original container, with labels intact and seal unbroken
- Tinting colors for all paint shall be colors in oil, ground and pure in linseed oil and of the grade obtainable.
- Color pigments shall be used to produce the exact shades of paint, which shall conform of the approved color scheme of the building.
- Except as otherwise noted, color of the priming coat shall be lighter than the body coat and color of the body lighter than the finish coat. The first coat shall be white.
- Wood surfaces shall be thoroughly cleaned, smoothly had pressed and well sand papered before any paint or finish is applied.
- Before applying paint to concrete, cement plaster or other cement finishes, etc. This surface must be allowed to dry thoroughly.

#### **D. ELECTRICAL WORKS**

##### **Conduits, Boxes & Fittings**

- The work to be undertaken here under includes the furnishing of all labor, materials, equipment, tools and supervision to the project and to complete the good working condition of the electrical system for the proposed building.

##### **Wires and Wiring Devices**

- This Item shall consist of the furnishing and installation of all wires and wiring devices consisting of electric wires and cables, wall switches, convenience receptacles, heavy duty receptables and other devices shown on the approved Plans but not mentioned in these specifications

##### **Panelboard with Main & Branch Breakers**

- Panel boards shall conform to the schedule of panel boards as shown on the approved Plans with respect to supply characteristics, rating of main lugs or main circuit breaker, number and ratings and capacities of branch circuit breakers.
- Panel boards shall consist of a factory completed dead front assembly mounted in an enclosing flush type cabinet consisting of code gauge galvanized sheet steel box with trim and door. Each door shall be provided with catch lock and two (2) keys. Panel boards shall be provided with - directories and shall be printed to indicate load served by each circuit.
- Panel board cabinets and trims shall be suitable for the type of mounting shown on the approved Plans. The inside and outside of panel board cabinets and trims shall be factory painted with one rust proofing primer coat and two finish shop coats of pearl-gray enamel paint.
- Main and branch circuit breakers for panel boards shall have the rating, capacity and number of poles as shown on the approved Plans. Breakers shall be thermal magnetic type. Multiple breakers shall be of the common trip type having a single operating handle. For 50-ampere breaker or less

##### **Lighting Fixtures & Lamps**

- All lighting fixtures and lamps are as specified and listed on lighting fixture schedule:
  - LED Recessed Circular Downlight, Model LLRC w/ 15w DL, 155mm outside diameter, 140mm inside diameter
  - 18 watts, LED Slim Panel, 220V-240V, CRI>80, 1630LM

- 4" diameter Lighting receptacle
- 15w DL Bulb, LED
- 20w DL Bulb, LED
- Automatic Emergency Light

### **Grounding System**

- All grounding system installation shall be executed in accordance with the approved plans.
- Grounding system shall include building perimeter ground wires, ground rods, clamps, connectors, ground wells and ground wiretap as shown in the approved design.

## **E. OTHER MISCELLANEOUS WORKS**

### **Fire Alarm System**

- This item shall consist of furnishing and installation of Fire Protection Sprinkler System (AFSS), refer to the plans specified:
  - 1 set Fire Extinguisher, 10lbs, ABC with bracket
  - 2 set Smoke detector w/ base, battery operated, 9volts
  - 1 set Fire Alarm Bell, 6" diameter
  - 1 set Fire Alarm Manual Station

### **Fabrication & Installation of Signages & Logo**

- This item of works includes the fabrication and installation of signages and logo and shall be of size and type indicated in the schedule and as specified therein.

### **Handwash Area**

- This item shall consist of furnishing and construction of handwash area for in the contract and accordance with this Specifications, at the locations, and in conformity with the lines and grades shown on the Plans, or as required by the Engineer.

### **Aluminum Cabinet**

- The works includes fabrication and installation of cabinet using aluminum.

## **F. OTHER GENERAL REQUIREMENTS**

### **Bunkhouse and Other Facilities**

- This item includes the construction of the temporary facilities for the engineer and a temporary bunkhouse for rental basis including the power and water supply for the storage of the materials / equipment needed for the whole duration of the project.

### **Project Billboard/Signboard**

- Fabrication & installation of plywood size (1.2m x 2.4m) standard billboard with coco lumber frame.

### **Occupational Construction Safety and Health**

- The contractor needs to establish safety goals and objectives develop and implement a written Safety and Health program. The contractor also needs to provide a Part-Time Safety Practitioner and First Aider who undergone training at DOLE/ Red cross respectively.

**6. Construction of Child Development Center, Sitio Malictay, Brgy. Hacienda, San Miguel Island, Tabaco City**

**A. EARTHWORKS**

**Clearing and Grubbing**

- This item of work consists of clearing, grubbing, removing, and disposing all vegetation and debris as designated in the Contract, except those objects that are designated to remain in place or are to be removed in consonance with other provisions of this Specification. The work shall also include the preservation from injury or defacement of all objects designated to remain.
- The engineer will establish the limits of work and designate all trees, shrubs, plants, and other things to remain. The Contractor shall preserve all objects designated to remain.

**Structure Excavation (Common Soil)**

- This item of work consists of excavation of material in accordance with this Specification and in conformity with the lines, grades and dimensions shown on the Plans or established by the Engineer. The Contractor shall notify the Engineer sufficiently in advance of the beginning of any excavation so that cross-sectional elevations and measurements may be taken on the undisturbed ground. The natural ground adjacent to the structure shall not be disturbed without permission of the Engineer.

**Embankment (From Structure Excavation)**

- This Item shall consist of the construction of embankment from excavated materials in accordance with the specification and in conformity with the lines, grades and dimensions shown on the plans or established by the engineer.

**Embankment (From Borrow)**

- This item shall consist of the construction of embankment in accordance with this Specification and in conformity with the lines, grades and dimensions shown on the Plans or established by the Engineer.

**Gravel Fill**

- This item shall consist of placing 0.10m thick gravel fill in accordance with the specification and in conformity with the lines, grades and dimensions shown on the plans or established by the engineer.

**B. PLAIN AND REINFORCED CONCRETE WORKS**

**Structural Concrete (Class A) 28 days**

- This item shall consist of furnishing, bending, placing and finishing concrete in all structures except pavements in accordance with this specification and conforming to the lines, grades, and dimensions shown on the Plans. Concrete shall consist of a mixture of Portland Cement, fine aggregate, coarse aggregate, admixture when specified, and water mixed in the proportions specified or approved by the Engineer.

**Reinforcing Steel (Deformed)**

- This item covers the supply of labor, materials and equipment necessary for the installation of reinforcing steel bars (Grade 40) of structures. (Please refer to plans).
- Reinforcing bars shall be standard commercial, deformed steel such as NSC steel or other locally available equivalent. Steel bars shall be free from rust scales. Splices in bars shall be made at critical points of maximum stress.

**Formworks and False Works**

- This item shall consist of designing, constructing and removing forms and falsework to temporarily support concrete, girders and other structural elements until the structure is completed to the point it can support itself.

### **C. FINISHING AND OTHER CIVIL WORKS**

#### **Soil Poisoning**

- This item shall consist of Cordoning and Drenching in accordance with the specification and in conformity with the lines, grades and dimensions shown on the plans or established by the engineer.
- At the time soil poisoning is to be applied, the soil to be treated shall be in friable condition with low moisture content so as to allow uniform distribution of the toxicant agents. Toxicant shall be applied at least twelve (12) hours prior to placement of concrete which shall be in contact with treated materials.
- Treatment of the soil on the exterior sides of the foundation walls, grade beams and similar structures shall be done prior to final grading and planting or landscaping work to avoid disturbance of the toxicant barriers by such operations.
- Areas to be covered by concrete slab shall be treated before placement of granular fill used as capillary water barrier at a rate of 12 liters per square meter with Type I working solution after it has been compacted and set to required elevation. Additional treatment shall be applied as follows:
  1. In critical areas such as utility openings for pipes, conduits and ducts, apply additional treatment at the rate of 6 liters per linear meter in a strip 150 mm to 200 mm wide.
  2. Along the exterior perimeter of the slab and under expansion joint, at the rate of 2.5 liters per linear meter in a strip 150 mm to 200 mm wide in a shallow trench.

#### **Catch Basin (Concrete)**

- This item shall consist of the construction of catch basin using CHB in accordance with this Specification and in reasonably close conformity with the lines and grades shown on the Plans or as established by the Engineer.

#### **Septic Tank**

- This item shall consist of the construction of septic tank in accordance with this Specifications and in conformity with the lines and grades shown on the Plans or as established by the Engineer.

#### **Sewer Line Works**

- This item shall consist of furnishing all materials, equipment and labor for the complete sewerage system, is an underground pipe to transport sewage from the building (but not storm water) to a sewage treatment plant or disposal. Sewerage system should keep the system in good condition.
- Use sewer pipes, fittings, accessories, materials and all work obviously necessary for the proper functioning of all specifications or indicated in the drawings are included in this work.

#### **Storm Drainage and Downspout**

- This item shall consist of furnishing all materials, equipment and labor for the complete installation of the storm drainage system to include all pipings, gutters, canal, catch basins, junction boxes, handholes, manholes, and other appurtenant structures, and sewerage system to include all sanitary sewer piping and septic vault where no public sewer exist, from the building to the point of discharge.

### **Plumbing Works**

- All works shall comply with the requirements and provisions of the National Plumbing Code of the Philippines.
- All fixtures shall be separately trapped. The trap shall be placed as near as possible to the fixtures
- No fixtures shall be double trapped.
- Horizontal waste lines shall be secured by hooks to the building frames or embedded in concrete whenever necessary.
- Horizontal waste line receiving the discharge from two or more fixtures shall be provided with the vents connected to the stack vents at least 1.20m from the floor level.
- Waterlines: potable waterline pipes shall be extended to all the fixture outlets and equipment from the gate valve near the riser.
- Provide and install complete floor drains shown on plans, brass or nickel plated 4" x 4" with the waste line, P-traps and vents.
- All pipes, fitting traps, fixtures, appurtenances and devices of plumbing and drainage system shall be inspected and approved by the architect/engineer to ensure compliance with the entire requirement of all codes and regulations referred in these specifications.
- Use sanitary pipes, fittings, accessories, materials and all work obviously necessary for the proper functioning of all specifications or indicated in the drawings are included in this work.

### **Ceiling (4.5mm, Metal Frame, Fiber Cement Board)**

- This item of work includes the installation of ceiling by using 4.5mm thk Fiber Cement Board and Metal framing.
- The ceiling must be installed 100mm from the bottom of the roof beam.
- All materials shall be of approved high quality. Please refer to the plan for the complete details.

### **Steel Windows**

- This item of work includes the installation of Steel Window.
- Windows shall be of size and type indicted in the schedule and as specified therein.

### **Doors (Wooden Panel / Flush)**

- All doors specified in the plan must be manufactured in accordance to its sizes and by a manufacturer of good quality.

### **Doors and Window Screen**

- All doors and window screen in the plan must be manufactured in accordance to its sizes and by a manufacturer of good quality.

### **Waterproofing (Cement-Base)**

- Furnish all materials, equipment, labor, plant and other facilities to complete all waterproofing works as shown on the plans and hereinafter specified.
- All works included under this division shall be subject to the General Conditions accompanying these specifications. The contractor is required to refer especially thereto.
- All concrete surface shall be wood toweled smooth, firm, dry, clean and free of loose or foreign materials and without any projects, indentation and other imperfections.

- Apply 2 coats of cold applied waterproofing and vertical wall to a height of 10" (250mm) unless otherwise shown on the drawings the area to be waterproofed.
- Pour all holes of exterior concrete hollow blocks with class B concrete (coarse, aggregate shall be of such size so that no voids are formed)
- The installation of waterproofing shall be done by an approved roofing contractor by the manufacturer.
- No substitution of materials shall be made unless authorized in writing by the Architect prior to starting the work of waterproofing.

#### **Unglazed Tiles**

- The process of firing the tiles infuses the glaze into the top layer of the clay of the tile. But, if no coating is applied on the tile before firing it, then it will be called an unglazed tile.

#### **Glazed Tiles**

- Glazed tile shall be cushion-edge locally manufactured of the size or type and pattern shown on drawings and/or specified above. Use Granito or Mariwasa or another approved equivalent.

#### **Tactiles (PWD Ramp)**

- This item of work includes the installation of 20cm x 20cm tactiles for PWD Ramp.

#### **Cement Plaster Finish**

- All concrete surfaces including those indicated as cement plaster finish on plan, in all interior walls and other concrete surfaces without specified finish, shall be done and applied in accordance with the following provisions.
- Immediately after the removal of forms, all projecting wires and bolts and other devices used for trying forms shall be cut off at least ½ cm. beneath the surface finishes. All holes voids, depressions and other defects shall be enlarged, roughened and repaired with mortar of the same grade as that even surface similar surface all to the satisfaction of the Engineer. Cracks shall be cut out and the sides dove tailed to a depth of at least 5cm. and shall thereafter with a mortar of the same grade as that in the original surface.
- The concrete mixture to be used for all plastering works must be CLASS "A" MORTARS – 1:3 by volume.

#### **Cement Floor Finish**

- This item of work consists of cement floor finish in accordance with this Specification and in conformity with the lines, grades and dimensions shown on the Plans or established by the Engineer.

#### **CHB Non Load Bearing, 100mm (Incl. RSB)**

- This item of work consists of furnishing and installation of 100mm thick CHB for all exterior/interior walls unless otherwise indicated. CHB shall be filled with mortar and ready to accept plaster finish.

#### **CHB Non Load Bearing, 150mm (Incl. RSB)**

- This item of work consists of furnishing and installation of 150mm thick CHB for all exterior/interior walls unless otherwise indicated. CHB shall be filled with mortar and ready to accept plaster finish.

#### **Railings**

- This item shall consist of furnishing and constructing posts and guardrails of the types called for in the contract and in accordance with this Specification, at the locations, and in conformity with the lines and grades shown on the Plans, or as required by the Engineer.

### **Carpentry Works**

- This item covers the supply of labor, materials and equipment necessary for the fabrication of White Board, Kitchen Cabinet, and Tables & Chair. All materials shall be of approved high quality. Please refer to the plan for the complete details.

### **Painting Works**

- The works covered by this section of the specification consist in the proper preparation of surface, furnishing of labor, material tools appliances, scaffolding and other necessary equipment and in the performing of all operations in connection with painting, varnishing and wall paper works, complete in accordance with the color scheme and specified therein.
- This section of the specification covers the complete painting and finishing of the wood surface, the painting of plasters, concrete, unfinished metal and other surfaces throughout the interior and exterior of the building
- All paint materials shall meet the requirements of the specifications by the standardization committee on supplies and shall be delivered on the job in the original container, with labels intact and seal unbroken
- Tinting colors for all paint shall be colors in oil, ground and pure in linseed oil and of the grade obtainable
- Color pigments shall be used to produce the exact shades of paint, which shall conform of the approved color scheme of the building.
- Except as otherwise noted, color of the priming coat shall be lighter than the body coat and color of the body lighter than the finish coat. The first coat shall be white.
- Wood surfaces shall be thoroughly cleaned, smoothly had pressed and well sand papered before any paint or finish is applied.
- Before applying paint to concrete, cement plaster or other cement finishes, etc. This surface must be allowed to dry thoroughly.

## **D. ELECTRICAL WORKS**

### **Conduits, Boxes & Fittings**

- The work to be undertaken here under includes the furnishing of all labor, materials, equipment, tools and supervision to the project and to complete the good working condition of the electrical system for the proposed building.

### **Wires and Wiring Devices**

- This Item shall consist of the furnishing and installation of all wires and wiring devices consisting of electric wires and cables, wall switches, convenience receptacles, heavy duty receptacles and other devices shown on the approved Plans but not mentioned in these specifications

### **Panelboard with Main & Branch Breakers**

- Panel boards shall conform to the schedule of panel boards as shown on the approved Plans with respect to supply characteristics, rating of main lugs or main circuit breaker, number and ratings and capacities of branch circuit breakers.
- Panel boards shall consist of a factory completed dead front assembly mounted in an enclosing flush type cabinet consisting of code gauge galvanized sheet steel box with trim and door. Each door shall be provided with catch lock and two (2) keys. Panel boards shall be provided with - directories and shall be printed to indicate load served by each circuit.

- Panel board cabinets and trims shall be suitable for the type of mounting shown on the approved Plans. The inside and outside of panel board cabinets and trims shall be factory painted with one rust proofing primer coat and two finish shop coats of pearl-gray enamel paint.
- Main and branch circuit breakers for panel boards shall have the rating, capacity and number of poles as shown on the approved Plans. Breakers shall be thermal magnetic type. Multiple breakers shall be of the common trip type having a single operating handle. For 50-ampere breaker or less, it may consist of single-pole breaker permanently assembled at the factory into a multi-pole unit.

#### **Lighting Fixtures & Lamps**

- All lighting fixtures and lamps are as specified and listed on lighting fixture schedule:
  - 25 pcs 12W LED Light, Round, Surface Mounted, Daylight
  - 2 pcs Automatic Emergency Light, 2x3W SMT LED 12V/9.0Ah Sealed Lead Acid
  - 2 pcs 18" Industrial Wall Fan, 3-Leaf Aluminum Fan Blade,

#### **Grounding System**

- All grounding system installations shall be executed in accordance with the approved plans.
- Grounding system shall include building perimeter ground wires, ground rods, clamps, connectors, ground wells, and ground wiretap as shown in the approved design.

### **E. OTHER MISCELLANEOUS WORKS**

#### **Fire Alarm System**

- This item shall consist of furnishing and installation of Fire Protection Sprinkler System (AFSS), refer to the plans specified:
  - 1 set Fire Extinguisher, 10lbs, ABC with bracket
  - 2 set Smoke detector w/ base, battery operated, 9volts
  - 1 set Fire Alarm Bell, 6" diameter
  - 1 set Fire Alarm Manual Station

#### **Fabrication & Installation of Signages & Logo**

- The work includes fabrication & installation of Recognition Plate / Project Marker using stainless steel.

#### **Handwash Area**

- This item shall consist of furnishing and construction of handwash area for in the contract and accordance with this Specifications, at the locations, and in conformity with the lines and grades shown on the Plans, or as required by the Engineer.

#### **Aluminum Cabinet**

- The works includes fabrication and installation of cabinet using aluminum.

### **F. OTHER GENERAL REQUIREMENTS**

#### **Bunkhouse and Other Facilities**

- This item includes the construction of the temporary facilities for the engineer and a temporary bunkhouse for rental basis including the power and water supply for the storage of the materials / equipment needed for the whole duration of the project.



### **Project Billboard/Signboard**

- Fabrication & installation of plywood size (1.2m x 2.4m) standard billboard with coco lumber frame.

### **Occupational Construction Safety and Health**

- The contractor needs to establish safety goals and objectives develop and implement a written Safety and Health program. The contractor also needs to provide a Part-Time Safety Practitioner and First Aider who undergone training at DOLE/ Red cross respectively.

## **7. *Desilting / Dredging of Tagas River, Cobo-Baranghawon Section (Upstream of Basud Bridge), Tabaco City***

### **Clearing & Deepening of Waterways**

- This item of work consists of clearing, grubbing, removing, and disposing all vegetation and debris as designated in the Contract, except those objects that are designated to remain in place or are to be removed in consonance with other provisions of this Specification. The work shall also include the preservation from injury or defacement of all objects designated to remain.
- The engineer will establish the limits of work and designate all trees, shrubs, plants, and other things to remain. The Contractor shall preserve all objects designated to remain.

### **Removal & Disposal of Silted Materials**

- This item of work consists of removal and disposal of silted materials. Begin by assessing the site to determine the volume and type of silted material to be removed. Use appropriate excavation equipment to carefully remove the silt, ensuring minimal disturbance to the surrounding environment. Transport the silted material to an approved disposal site using suitable vehicles, ensuring that all loads are covered to prevent spillage during transit. Dispose of the material according to local regulations, which may involve depositing it in designated landfills or treatment facilities. Throughout the process, implement necessary safety measures, including the use of personal protective equipment (PPE) for workers, and ensure compliance with environmental guidelines to minimize the impact on local ecosystems. Additionally, maintain thorough documentation of the removal and disposal process, including permits, transport records, and disposal receipts, to ensure regulatory compliance and accountability.

### **Fab/Installation of Billboard**

- Fabrication & installation of plywood size (1.2m x 2.4m) standard billboard with coco lumber frame.

### **Occupational Construction Safety and Health**

- The contractor needs to establish safety goals and objectives develop and implement a written Safety and Health program. The contractor also needs to provide a Part-Time Safety Practitioner and First Aider who undergone training at DOLE/ Red cross respectively.

## **8. *Construction of Water Supply System, Brgy. San Vicente, Tabaco City***

### **A. Construction of Perimeter Fence and Pump Control Room**

#### **Structure Excavation (Common Soil)**

- This item of work consists of excavation of material in accordance with this Specification and in conformity with the lines, grades and dimensions shown on the Plans or established by the Engineer. The Contractor shall notify the Engineer sufficiently in advance of the beginning of any excavation so that cross-sectional elevations and measurements any be taken on the undisturbed ground. The natural ground adjacent to the structure shall not be disturbed without permission of the Engineer.

**Embankment (From Structural Excavation)**

- This item shall consist of the construction of embankment from excavated materials in accordance with the specification and in conformity with the lines, grades and dimensions shown on the plans or established by the engineer.

**Gravel Bedding**

- This item shall consist of placing 0.10m thick gravel fill in accordance with the specification and in conformity with the lines, grades and dimensions shown on the plans or established by the engineer.

**Structural Concrete**

- This item shall consist of furnishing, bending, placing and finishing concrete in all structures except pavements in accordance with this specification and conforming to the lines, grades, and dimensions shown on the Plans. Concrete shall consist of a mixture of Portland Cement, fine aggregate, coarse aggregate, admixture when specified, and water mixed in the proportions specified or approved by the Engineer.

**Reinforcing Steel (Deformed, Grade 40)**

- This item covers the supply of labor, materials and equipment necessary for the installation of reinforcing steel bars (Grade 40) of structures. (Please refer to plans).
- Reinforcing bars shall be standard commercial, deformed steel such as NSC steel or other locally available equivalent. Steel bars shall be free from rust scales. Splices in bars shall be made at critical points of maximum stress.

**Formworks and Falseworks**

- This item shall consist of designing, constructing and removing forms and falsework to temporarily support concrete, girders and other structural elements until the structure is completed to the point it can support itself.

**Catch Basin (CHB)**

- This item shall consist of the construction of a catch basin in accordance with this Specification and in reasonably close conformity with the lines and grades shown on the Plans or as established by the Engineer.

**Storm Drainage and Downspout**

- This item shall consist of furnishing all materials, equipment and labor for the complete installation of the storm drainage system to include all pipings, gutters, canal, catch basins, junction boxes, handholes, manholes, and other appurtenant structures, and sewerage system to include all sanitary sewer piping and septic vault where no public sewer exist, from the building to the point of discharge.

**Residential Casement (Steel)**

- The item shall consist of furnishing all materials, hardware, plant, tools, labor and services necessary for complete fabrication and installation of steel residential casement of the type and size as shown on the Plans

**Doors (Wood Panel)**

- The item shall consist of furnishing all materials, hardware, plant, tools, labor and services necessary for complete fabrication and installation of wooden door panel of the type and size as shown on the Plans

**Cement Plaster Finish**

- All concrete surfaces including those indicated as cement plaster finish on plan, in all interior walls and other concrete surfaces without specified finish, shall be done and applied in accordance with the following provisions.

- Immediately after the removal of forms, all projecting wires and bolts and other devices used for trying forms shall be cut off at least ½ cm. beneath the surface finishes. All holes voids, depressions and other defects shall be enlarged, roughened and repaired with mortar of the same grade as that even surface similar surface all to the satisfaction of the Engineer. Cracks shall be cut out and the sides dove tailed to a depth of at least 5cm. and shall thereafter with a mortar of the same grade as that in the original surface.
- The concrete mixture to be used for all plastering works must be CLASS “A” MORTARS – 1:3 by volume.

#### **Painting Works (Masonry/Concrete)**

- The works covered by this section of the specification consist in the proper preparation of surface, furnishing of labor, material tools appliances, scaffolding and other necessary equipment and in the performing of all operations in connection with painting, varnishing and wall paper works, complete in accordance with the color scheme and specified therein.
- This section of the specification covers the complete painting and finishing of the wood surface, the painting of plasters, concrete, unfinished metal and other surfaces throughout the interior and exterior of the building
- All paint materials shall meet the requirements of the specifications by the standardization committee on supplies and shall be delivered on the job in the original container, with labels intact and seal unbroken.
- Tinting colors for all paint shall be colors in oil, ground and pure in linseed oil and of the grade obtainable.
- Color pigments shall be used to produce the exact shades of paint, which shall conform of the approved color scheme of the building.
- Except as otherwise noted, color of the priming coat shall be lighter than the body coat and color of the body lighter than the finish coat. The first coat shall be white.
- Wood surfaces shall be thoroughly cleaned, smoothly had pressed and well sand papered before any paint or finish is applied.
- Before applying paint to concrete, cement plaster or other cement finishes, etc. This surface must be allowed to dry thoroughly.

#### **CHB Non Load Bearing, 100mm (Incl. RSB)**

- This item of work consists of furnishing and installation of 100mm thick CHB for all exterior/interior walls unless otherwise indicated. CHB shall be filled with mortar and ready to accept plaster finish.

#### **Structural Steel**

- Set and install structural steel angels properly aligned, plumb, level, square true to profile section and rigidly anchored with adjacent concrete surface walls.
- Allow all adjacent items of work to be completed before any installation work is started except the installation of structural steel angels.
- Assemble rolling up doors in accordance with the manufacturer’s instruction manual or as indicated in the shop drawing approved.
- All anchors and insets for guide, brackets and other accessories shall be located accurately

#### **B. Other Miscellaneous Works**

##### **Electro-Mechanical Components**

- This item shall consist of furnishing and installation of electro-mechanical components, refer to the plans specified:
  - 1 set 4" Stainless Steel Pump (Max. Flow: 15L/sec and 40.23 m Head")
  - 1 set Submersible Motor, Power: 15 HP 230v ac 60 hz, 3 Ph, SF1.15 RPM 3450
  - 1 set VFD Motor control w/ Pressure Control Transmitter in NEMA Enclosure complete w/ voltmeter, ammeter, panel instrumentation and motor protective devices
  - 1 lot 4" G.I. Standard Yard piping Design w/ 4" Production meter, chlorine dosing pump, check valves, butterfly valve control
  - 16 lgt 4" PVC Riser Pipe

#### **Transmission Line**

- This item shall consist of furnishing and installation of transmission lines, refer to the plans specified: 5 pcs 4" HDPE Pipe, 1 pc 4" Mechanical Gate Valve, 1 pc STC 4", 1 pc Valve Box Cover 6", and assorted fittings

#### **Electrical Works**

- The work to be done under this division of specifications consists of the fabrication, furnishing, delivery and installation, complete in all details of the electrical work, at the subject premises and all work material's incidental to the proper completion of the installation, except those portions of the work which are expressly stated to be done by other fields. All' works shall be done in accordance with the rules and regulations and with the specifications.

#### **C. Other General Requirements**

##### **Provision of Bunkhouse (Rental Basis) & Other Facilities**

- This item includes the construction of the temporary facilities for the engineer and a temporary bunkhouse for rental basis including the power and water supply for the storage of the materials / equipment needed for the whole duration of the project.

##### **Occupational Safety and Health Program**

- The contractor needs to establish safety goals and objectives develop and implement a written Safety and Health program. The contractor also needs to provide a Part-Time Safety Practitioner and First Aider who undergone training at DOLE/ Red cross respectively.

##### **Project Billboard/Signboard**

- Fabrication & installation of plywood size (1.2m x 2.4m) standard billboard with coco lumber frame.

## *Section VII. Drawings*

Copy of the Plans and Drawings can be found online at:

<https://drive.google.com/drive/folders/1GndGRmmhFCjotJuqxyKhDHd5KArLxf>

*Section VIII. Bill of Quantities*

**Project Title:** Construction / Improvement of Various Infrastructure Projects (Public Buildings & Other Infrastructure Projects)

**Location:** Various Barangays, Tabaco City

**Contract ID No.** 024-04-2025-INFRA-PB

**Approved Budget for the Contract (ABC):** Php 42,251,932.50

**Duration:** 240 Calendar Days

### BILL OF QUANTITIES

Item No.	Description of Work to be Done	Qty	Unit	Unit Price (Php)	Total Amount (Php)
<b>A</b>	<b>PUBLIC BUILDINGS</b>				
<b>1.</b>	<b>Construction of Multi-Purpose Hall at Tabiguian, Brgy. Tabiguian, Tabaco City</b>				
	<b>Part A</b>	<b>Earthworks</b>			
	1700	Clearing and Grubbing	273.76	sq.m.	
	803(1)a	Structure Excavation (Common Soil)	189.48	cu.m.	
	804(1)a	Embankment (From Structure Excavation)	146.88	cu.m.	
	804(1)b	Embankment (From Borrow)	222.20	cu.m.	
	804(4)	Gravel Fill	32.88	cu.m.	
	<b>Part B</b>	<b>Plain And Reinforced Concrete Works</b>			
	900(1)c1	Structural Concrete (Class A) 28 days	97.24	cu.m.	
	902(1)a	Reinforcing Steel (Deformed, Grade 40)	12,405.26	kgs	
	903(2)	Formworks and False Works	575.66	sq.m.	
	<b>Part C</b>	<b>Finishing And Other Civil Works</b>			
	1001(1)	Soil Poisoning	191.25	sq.m.	
	1001(5)a	Catch Basin (Concrete)	10.00	each	
	1001(8)	Sewer Line Works	1.00	l.s.	
	1001(9)	Storm Drainage and Downspout	1.00	l.s.	
	1014(1)b1	Prepainted Metal Sheets	183.60	sq.m.	
	1016(1)a	Waterproofing (Cement-Based)	87.21	sq.m.	
	1027(1)	Cement Plaster Finish	262.94	sq.m.	
	1027(2)	Cement Floor Finish	191.25	sq.m.	
	1046(2)a1	CHB Non Load Bearing, 100mm (Incl. RSB)	105.00	sq.m.	
	1046(2)a2	CHB Non Load Bearing, 150mm (Incl. RSB)	186.31	sq.m.	
	1047(8)	Structural Steel (Roof Framing)	1.00	l.s.	
	624 (1)	Electrical Works	1.00	l.s.	
	<b>Part D</b>	<b>Other General Requirements</b>			
	SPL 2	Bunkhouse and Other Facilities	1.00	l.s.	
	SPL 3	Project Billboard/Signboard	2.00	unit	
	B.7	Occupational Construction Safety and Health	1.00	l.s.	
		<i>Subtotal</i>			
<b>2</b>	<b>Construction of Health Center at Pinagbobong, Brgy. Pinagbobong, Tabaco City</b>				
	<b>Part A.</b>	<b>Earthworks</b>			
	101	Removal of Structures and Obstruction	3.45	cu.m.	
	803(1)a	Structural Excavation (Common Soil)	29.33	cu.m.	
	804(1)a	Backfilling of Excavated Materials	20.40	cu.m.	
	804(1)b	Embankment	3.45	cum	
	804(4)	Gravel Fill	1.91	cu.m.	
	<b>Part B</b>	<b>Plain And Reinforced Concrete Works</b>			
	900(1)c1	Structural Concrete (Class A) 28 days	40.92	cu.m.	



	902(1)a	Reinforcing Steel (Deformed, Grade 40)	6,577.67	kgs		
	903(2)	Formworks and False Works	325.15	sq.m.		
	<b>Part C</b>	<b>Finishing And Other Civil Works</b>				
	1001(5)b	Catch Basin (CHB)	4.00	ea.		
	1001(8)	Sewer Line Works	1.00	lot		
	1001(9)	Storm Drainage and Downspout	1.00	lot		
	1001(11)	Septic Vault	1.00	lot		
	1002(4)	Plumbing Fixtures	1.00	lot		
	1002(24)	Cold Water Lines	1.00	lot		
	1003	Carpentry and Joinery Works (Ceiling)	87.43	sq.m.		
	1010(2)a	Doors and Windows	41.03	sqm		
	1014(1)b1	Pre-Painted Metal Sheets	44.89	sq.m.		
	1016(1)a	Waterproofing (Cement-Base)	72.67	sq.m.		
	1018(2)	Tile Works	194.77	sq.m.		
	1027(1)	Cement Plaster Finish	815.32	sq.m.		
	1032(1)a	Painting Works (Masonry/Concrete)	831.68	sq.m.		
	1046(2)a1	CHB Non Load Bearing, 100mm (Incl. RSB)	66.61	sq.m.		
	1046(2)a2	CHB Non Load Bearing, 150mm (Incl. RSB)	199.68	sq.m.		
	1051	Railings	7.10	l.m		
	SPL-1	PWD Ramp	1.00	lot		
	<b>Part D</b>	<b>Electrical</b>				
	1100(10)	Conduits, Boxes & Fittings	1.00	lot		
	1101(42)	Wires and Wiring Devices	1.00	lot		
	1102(27)	Power Load Center, Switchgear and Panelboards	1.00	lot		
	1103(1)	Lighting & Fixture	1.00	lot		
	SPL-2	ACU Installation	1.00	lot		
	<b>Part E</b>	<b>Other Miscellaneous Works</b>				
	SPL-3	Furniture and Fixture	1.00	lot		
	SPL-4	Fabrication & Installation of Signages & Logo	1.00	lot		
	<b>Part F</b>	<b>Other General Requirements</b>				
	SPL-5	Provision of Bunkhouse (Rental Basis) & Other Facilities	1.00	lot		
	B.5	Project Billboard/Signboard	3.00	Unit		
	B.7(2)	Occupational Safety and Health Program	1.00	lot		
					<i>Subtotal</i>	
<b>3</b>	<b>Improvement of Evacuation Center &amp; Disaster Operation Center, Brgys. San Antonio &amp; Pawa, Tabaco City</b>					
	<b>I.</b>	<b>Improvement Evacuation Center, Brgy. San Antonio, Tabaco City</b>				
	<b>Part A</b>	<b>Earthworks</b>				
	801(1)	Clearing and Grubbing	184.90	sq.m.		
	803(1)a	Structure Excavation (Common Soil)	26.28	cu.m.		
	804(1)a	Embankment (From Structure Excavation)	20.27	cu.m.		
	804(4)	Gravel Fill	2.69	cu.m.		
	<b>Part B</b>	<b>Plain And Reinforced Concrete Works</b>				
	900(1)c1	Structural Concrete (Class A) 28 days	11.21	cu.m.		
	902(1)a	Reinforcing Steel (Deformed, Grade 40)	2,217.53	kgs		
	903(2)	Formworks and False Works	103.48	sq.m.		
	<b>Part C</b>	<b>Finishing And Other Civil Works</b>				
	624(8)	Solar LED Streetlight	4.00	unit		
	1009(1)a	Jalousie Windows (Glass)	1.80	sq.m.		

	1012(6)	Glass and Glazing	1.00	L.S.		
	1016(1)a	Waterproofing (Cement-Based)	810.00	sq.m.		
	1027(1)	Cement Plaster Finish	264.00	sq.m.		
	1046(2)a2	CHB Non Load Bearing, 150mm (Incl. RSB)	207.00	sq.m.		
	<b>II.</b>	<b>Improvement Of Disaster Operation Center, Brgy. Pawa, Tabaco City</b>				
	628(2)	Epoxy Coating on Crack	1.00	L.S.		
	801(1)	Removal of Structures and Obstruction	1.00	L.S.		
	1001(9)	Storm Drainage and Downspout	1.00	L.S.		
	1013(1)	Ceiling (4.5mm, Metal Frame, Fiber Cement Board)	42.74	sq.m.		
	1013(1)	Corrugated Metal Roofing	18.84	sq.m.		
	1016(1)a	Waterproofing (Cement-based)	47.53	sq.m.		
	1027(1)	Cement Plaster Finish	10.60	sq.m.		
	1032(1)a	Painting Works	53.34	sq.m.		
	1036(1)b	Polycarbonate Panels	81.90	sq.m.		
	1046(2)a1	CHB Non Load Bearing, 150mm (Incl. RSB)	5.30	sq.m.		
	1047(1)	Structural Steel	1.00	L.S.		
	1100(10)	Conduits, Boxes and Fittings	1.00	L.S.		
	1101	Wires and Wiring Devices	1.00	L.S.		
	1103	Lighting Fixtures and Lamp	1.00	L.S.		
	<b>III.</b>	<b>Other General Requirements</b>				
	SPL 1	Bunkhouse and Other Facilities	1.00	L.S.		
	SPL 2	Project Billboard/Signboard	4.00	unit		
	B.7	Occupational Construction Safety and Health	1.00	L.S.		
					<i>Subtotal</i>	
<b>4</b>	<b>Construction of Evacuation Center, Brgy. Buang, Tabaco City</b>					
	<b>Part A</b>	<b>Earthworks</b>				
	803(1)a	Structures Excavation (Common Soil)	277.07	cu.m.		
	804(1)a	Embankment (from Structure Excavation)	233.48	cu.m.		
	804(1)b	Embankment (from Common Borrow)	152.27	cu.m.		
	804(4)	Gravel Fill	16.19	cu.m.		
	<b>Part B</b>	<b>Plain And Reinforced Concrete Works</b>				
	900(1)c1	Structural Concrete (Class A) 28 days	127.87	cu.m.		
	902(1)a	Reinforcing Steel (Deformed , Grade 40)	22,640.34	kgs		
	903(2)	Formworks and False Works	835.71	sq.m.		
	<b>Part C</b>	<b>Finishing And Other Civil Works</b>				
	1000(1)	Soil Poisoning	305.00	sq.m.		
	1001(5)b	Catch Basin (CHB)	8.00	each		
	1001(11)	Septic Vault	1.00	l.s		
	1001(9)	Storm Drainage and Downspout	1.00	l.s		
	1001(8)	Sewer Line Works	1.00	l.s		
	1002(4)	Plumbing Fixtures	1.00	l.s		
	1002(24)	Cold Water Lines	1.00	l.s		
	1046(2)a2	CHB Non Loading Bearing, 150mm (incl. RSB)	585.28	sq.m.		
	1005 (7)	Louver Window	10.20	sq.m.		
	1027(1)	Cement Plaster Finish	1,249.42	sq.m.		
	1021(1)	Cement Floor Finish	92.19	sq.m.		
	1018(2)	Unglazed Tiles	169.44	sq.m.		
	1018(5)	Glazed Tiles	47.04	sq.m.		
	1018	Tactiles (PWD Ramp)	10.47	sq.m.		
	1006(1)	Steel Door and Frames	12.60	sq.m.		
	1006(2)	Hollow Core Flush Door	12.81	sq.m.		

	1009(1)b	Jalousie Windows (Wood)	20.30	sq.m.		
	1005	Steel Window (Security Grilles)	30.46	sq.m.		
	1051	Railings	36.15	LM		
	1003(1)c2	Ceiling Works (Metal Frame on Marine Plywood)	180.84	sq.m.		
	1032(1)	Painting Works (Masonry / Concrete)	1,363.40	sq.m.		
	1032(2)	Painting Works (Wooden Surfaces)	180.84	sq.m.		
	1016(1)a	Waterproofing (Cement-Base)	278.26	sq.m.		
	<b>Part D</b>	<b>Electrical Works</b>				
	1100(10)	Conduits, Boxes & Fittings	1.00	l.s		
	1101	Wires and Wiring Devices	1.00	l.s		
	1102(1)	Panelboard with Main & Branch Breakers	1.00	l.s		
	1103(1)	Lighting Fixtures & Lamps	1.00	l.s		
	1109(1)	Grounding System	1.00	l.s		
	<b>Part E</b>	<b>Mechanical Works</b>				
	1200(2)a	Oscillating (Stand Fan)	8.00	set		
	1200(2)b	Oscillating (Wall Fan)	1.00	set		
	1208	Fire Alarm System	1.00	l.s		
	<b>Part F</b>	<b>Other Miscellaneous Works</b>				
	SPL 1	Fabrication & Installation of Signages & Logo / Building Marker	1.00	l.s		
	<b>Part G</b>	<b>Other General Requirements</b>				
	SPL 2	Bunkhouse (Rental Basis) and Other Facilities	1.00	l.s		
	SPL 3	Project Billboard/Signboard	3.00	unit		
	SPL 4	Occupational Construction Safety and Health	1.00	l.s		
					<i>Subtotal</i>	
<b>5</b>	<b>Construction of Child Development Center, Brgy. Buhian, Tabaco City</b>					
	<b>Part A</b>	<b>Earthworks</b>				
	1700	Clearing and Grubbing	112.80	sq.m.		
	803(1)a	Structure Excavation (Common Soil)	77.92	cu.m.		
	804(1)a	Embankment (From Structure Excavation)	66.05	cu.m.		
	804(1)b	Embankment (From Borrow)	39.00	cu.m.		
	804(4)	Gravel Fill	13.28	cu.m.		
	<b>Part B</b>	<b>Plain And Reinforced Concrete Works</b>				
	900(1)c1	Structural Concrete (Class A) 28 days	43.06	cu.m.		
	902	Reinforcing Steel (Deformed)	7,544.47	kgs		
	903(2)	Formworks and False Works	198.86	sq.m.		
	<b>Part C</b>	<b>Finishing And Other Civil Works</b>				
	1000(1)	Soil Poisoning	118.00	sq.m.		
	1001(5)b	Catch Basin (CHB)	5.00	each		
	1001(11)	Septic Tank	1.00	l.s		
	1001(8)	Sewer Line Works	1.00	l.s		
	1001(9)	Storm Drainage and Downspout	1.00	l.s		
	1002(4)	Plumbing Works	1.00	l.s		
	1003(1)b1	Ceiling (4.5mm, Metal Frame, Fiber Cement Board)	70.48	sq.m.		
	1005	Steel Windows	14.43	sq.m.		
	1010(2)a	Doors (Wooden Panel / Flush)	5.46	sq.m.		
	SPL-1	Doors and Window Screen	18.63	sq.m.		
	1016(1)a	Waterproofing (Cement-Base)	112.38	sq.m.		
	1018(2)	Unglazed Tiles	6.38	sq.m.		
	1018(5)	Glazed Tiles	27.47	sq.m.		
	SPL-2	Tactiles (PWD Ramp)	7.56	sq.m.		
	1027(1)	Cement Plaster Finish	445.32	sq.m.		
	1021	Cement Floor Finish	90.35	sq.m.		

	1046(2)a1	CHB Non Load Bearing, 100mm (Incl. RSB)	19.11	sq.m.		
	1046(2)a2	CHB Non Load Bearing, 150mm (Incl. RSB)	171.15	sq.m.		
	1051	Railings	66.30	LM		
	1003	Carpentry Works	33.93	sq.m.		
	1032	Painting Works	547.63	sq.m.		
	<b>Part D</b>	<b>Electrical Works</b>				
	1100(10)	Conduits, Boxes & Fittings	1.00	l.s.		
	1101	Wires and Wiring Devices	1.00	l.s.		
	1102(1)	Panelboard with Main & Brain Breakers	1.00	l.s.		
	1103(1)	Lighting Fixtures & Lamps	1.00	l.s.		
	1109(1)	Grounding System	1.00	l.s.		
	<b>Part E</b>	<b>Other Miscellaneous Works</b>				
	1208	Fire Alarm System	1.00	l.s.		
	SPL-2	Fabrication & Installation of Signages & Logo	1.00	l.s.		
	SPL-3	Handwash Area	1.00	l.s.		
	SPL-4	Aluminum Cabinet	2.73	sq.m.		
	<b>Part D</b>	<b>Other General Requirements</b>				
	SPL-5	Bunkhouse and Other Facilities	1.00	l.s.		
	SPL-6	Project Billboard/Signboard	3.00	unit		
	B.7	Occupational Construction Safety and Health	1.00	l.s.		
					<i>Subtotal</i>	
<b>6</b>	<b>Construction of Child Development Center, Sitio Malictay, Brgy. Hacienda, San Miguel Island, Tabaco City</b>					
	<b>Part A</b>	<b>Earthworks</b>				
	100	Clearing and Grubbing	112.80	sq.m.		
	803(1)a	Structure Excavation (Common Soil)	77.92	cu.m.		
	804(1)a	Embankment (From Structure Excavation)	27.05	cu.m.		
	804(1)b	Embankment (From Borrow)	44.75	cu.m.		
	804(4)	Gravel Fill	13.28	cu.m.		
	<b>Part B</b>	<b>Plain And Reinforced Concrete Works</b>				
	900(1)c1	Structural Concrete (Class A) 28 days	43.06	cu.m.		
	902	Reinforcing Steel (Deformed)	7,544.47	kgs		
	903(2)	Formworks and False Works	198.86	sq.m.		
	<b>Part C</b>	<b>Finishing And Other Civil Works</b>				
	1000(1)	Soil Poisoning	118.00	liters		
	1001(5)a	Catch Basin (Concrete)	5.00	each		
	1001(5)b	Septic Tank	1.00	l.s.		
	1001(8)	Sewer Line Works	1.00	l.s.		
	1001(9)	Storm Drainage and Downspout	1.00	l.s.		
	1002(4)	Plumbing Works	1.00	l.s.		
	1003(1)b1	Ceiling (4.5mm, Metal Frame, Fiber Cement Board)	70.48	sq.m.		
	1005	Steel Windows	14.43	sq.m.		
	1010(2)a	Doors (Wooden Panel / Flush)	5.46	sq.m.		
	SPL-1	Doors and Window Screen	18.63	sq.m.		
	1016(1)a	Waterproofing (Cement-Base)	112.38	sq.m.		
	1018(2)	Unglazed Tiles	6.38	sq.m.		
	1018(5)	Glazed Tiles	27.47	sq.m.		
	SPL-2	Tactiles (PWD Ramp)	7.56	sq.m.		
	1027(1)	Cement Plaster Finish	445.32	sq.m.		
	1021	Cement Floor Finish	90.35	sq.m.		
	1046(2)a1	CHB Non Load Bearing, 100mm (Incl. RSB)	19.11	sq.m.		

	1046(2)a2	CHB Non Load Bearing, 150mm (Incl. RSB)	175.35	sq.m.		
	1051	Railings	66.30	LM		
	1003	Carpentry Works	33.93	sq.m.		
	1032	Painting Works	547.63	sq.m.		
	<b>Part D</b>	<b>Electrical Works</b>				
	1100(10)	Conduits, Boxes & Fittings	1.00	l.s.		
	1101	Wires and Wiring Devices	1.00	l.s.		
	1102(1)	Panelboard with Main & Brain Breakers	1.00	l.s.		
	1103(1)	Lighting Fixtures & Lamps	1.00	l.s.		
	1109(1)	Grounding System	1.00	l.s.		
	<b>Part E</b>	<b>Other Miscellaneous Works</b>				
	1208	Fire Alarm System	1.00	l.s.		
	SPL-3	Fabrication & Installation of Signages & Logo	1.00	l.s.		
	SPL-4	Handwash Area	1.00	l.s.		
	SPL-5	Aluminum Cabinet	2.73	sq.m.		
	<b>Part D</b>	<b>Other General Requirements</b>				
	SPL-6	Bunkhouse and Other Facilities	1.00	l.s.		
	SPL-7	Project Billboard/Signboard	3.00	unit		
	B.7	Occupational Construction Safety and Health	1.00	l.s.		
						<i>Subtotal</i>
<b>B</b>	<b>OTHER INFRASTRUCTURE PROJECTS</b>					
<b>7</b>	<b>Desilting / Dredging of Tagas River, Cobo-Baranghawon Section (Upstream of Basud Bridge), Tabaco City</b>					
	SPL-1	Clearing & Deepening of Waterways	14,175.16	cu.m		
	SPL-2	Removal & Disposal of Silted Materials	5,670.06	cu.m		
	SPL-3	Fab/Installation of Billboard	2.00	unit		
	SPL-4	Occupational Construction Safety and Health	1.00	l.s		
						<i>Subtotal</i>
<b>8</b>	<b>Construction of Water Supply System, Brgy. San Vicente, Tabaco City</b>					
	<b>I.</b>	<b>Construction of Perimeter Fence and Pump Control Room</b>				
	803(1)a	Structure Excavation (Common Soil)	49.67	cu.m.		
	804(1)a	Embankment (From Structural Excavation)	36.47	cu.m.		
	804(4)	Gravel Bedding	7.67	cu.m.		
	900(1)c1	Structural Concrete	22.99	cu.m.		
	902(1)a	Reinforcing Steel (Deformed, Grade 40)	2,102.15	kgs		
	903(2)	Formworks and Falseworks	194.09	sq.m		
	1001 (5)b	Catch Basin (CHB)	3.00	each		
	1001 (9)	Storm Drainage and Downspout	1.00	L.S.		
	1005(1)	Residential Casement (Steel)	3.60	sq.m.		
	1010(2)b	Doors (Wood Panel)	3.36	sq.m.		
	1027(1)	Cement Plaster Finish	112.60	sq.m		
	1032(1)a	Painting Works (Masonry/Concrete)	74.60	sq.m		
	1046(2)a2	CHB Non Load Bearing, 100mm (Incl. RSB)	122.16	sq.m		
	1047(1)	Structural Steel	1.00	L.S.		
	<b>II.</b>	<b>Other Miscellaneous Works</b>				
	A.	Electro-Mechanical Components	1.00	lot		
	B.	Transmission Line	1.00	lot		
	C.	Electrical Works	1.00	lot		
	<b>III.</b>	<b>Other General Requirements</b>				

	SPL 1	Provision of Bunkhouse (Rental Basis) & Other Facilities	1.00	L.S		
	B.7(2)	Occupational Safety and Health Program	1.00	L.S		
	B.5	Project Billboard/Signboard	2.00	unit		
					<i>Subtotal</i>	
					<i>Grand Total</i>	

<b>Name of the Company/Bidder</b>	<b>Name of Authorized Representative</b>	<b>Signature of Authorized Representative</b>

***Section IX. Checklist of Technical and Financial Documents***

# Checklist of Technical and Financial Documents

## I. TECHNICAL COMPONENT ENVELOPE

### *Class “A” Documents*

#### Legal Documents

- (a) Valid PhilGEPS Registration Certificate (Platinum Membership) (all pages)

#### Technical Documents

- (b) Statement of the prospective bidder of all its ongoing government and private contracts, including contracts awarded but not yet started, if any, whether similar or not similar in nature and complexity to the contract to be bid; **and**
- (c) Statement of the bidder’s Single Largest Completed Contract (SLCC) similar to the contract to be bid, except under conditions provided under the rules; **and**
- (d) Special PCAB License in case of Joint Ventures;  
**and** registration for the type and cost of the contract to be bid; **and**
- (e) Original copy of Bid Security. If in the form of a Surety Bond, submit also a certification issued by the Insurance Commission;  
**or**  
Original copy of Notarized Bid Securing Declaration; **and**
- (f) Project Requirements, which shall include the following:
- i. Organizational chart for the contract to be bid;
- ii. List of contractor’s key personnel (*e.g.*, Project Manager, Project Engineers, Materials Engineers, and Foremen), to be assigned to the contract to be bid, with their complete qualification and experience data;
- iii. List of contractor’s major equipment units, which are owned, leased, and/or under purchase agreements, supported by proof of ownership or certification of availability of equipment from the equipment lessor/vendor for the duration of the project, as the case may be; **and**
- (g) Original duly signed Omnibus Sworn Statement (OSS);  
**and** if applicable, Original Notarized Secretary’s Certificate in case of a corporation, partnership, or cooperative; or Original Special Power of Attorney of all members of the joint venture giving full power and authority to its officer to sign the OSS and do acts to represent the Bidder.

#### Financial Documents

- (h) The prospective bidder’s computation of Net Financial Contracting Capacity (NFCC).

### *Class “B” Documents*

- (i) If applicable, duly signed joint venture agreement (JVA) in accordance with RA No. 4566 and its IRR in case the joint venture is already in existence;  
**or**  
duly notarized statements from all the potential joint venture partners stating that they will enter into and abide by the provisions of the JVA in the instance that the bid is successful.



## II. FINANCIAL COMPONENT ENVELOPE

- (j) Original of duly signed and accomplished Financial Bid Form; **and**

### *Other documentary requirements under RA No. 9184*

- (k) Original of duly signed Bid Prices in the Bill of Quantities; **and**
- (l) Duly accomplished Detailed Estimates Form, including a summary sheet indicating the unit prices of construction materials, labor rates, and equipment rentals used in coming up with the Bid; **and**
- (m) Cash Flow by Quarter.

## **Annex A. Forms & Templates**



Name of the Procuring Entity: LGU-Tabaco City

Contract ID No. 024-04-2025-INFRA-PB

Name of the Project: Construction / Improvement of Various Infrastructure Projects (Public Buildings & Other Infrastructure Projects)

Project Location: Various Barangays, Tabaco City

**Statement of SINGLE LARGEST COMPLETED CONTRACT (SLCC) which is similar in nature**

Business Name : \_\_\_\_\_

Business Address : \_\_\_\_\_

Name of Contract	a. Owner Name b. Address c. Telephone Nos.	Nature of Work	Contractor's Role		a. Amount at Award b. Amount at Completion c. Duration	a. Date Awarded b. Contract Effectivity c. Date Completed
			Description	%		

**Note: This statement shall be supported with:**

- 1 Notice of Award and/ or Notice to Proceed;**
- 2 Owner's Certificate of Final Acceptance or Completion, or**
- 3 CPES Satisfactory Final Rating**

Submitted by : \_\_\_\_\_  
(Printed Name & Signature)

Designation : \_\_\_\_\_

Date : \_\_\_\_\_

Name of the Procuring Entity: LGU-Tabaco City

Contract ID No. 024-04-2025-INFRA-PB

Name of the Project: Construction / Improvement of Various Infrastructure Projects (Public Buildings & Other Infrastructure Projects)

Project Location: Various Barangays, Tabaco City

### Net Financial Contracting Capacity (NFCC)

- A. Summary of the Applicant Supplier's/Distributor's/Manufacturer's assets and liabilities on the basis of the attached income tax return and audited financial statement, stamped "RECEIVED" by the Bureau of Internal Revenue or BIR authorized collecting agent, for the immediately preceding year and a certified copy of Schedule of Fixed Assets particularly the list of construction equipment.

			Year <u>2024</u>
1.	Total Assets		
2.	Current Assets		
3.	Total Liabilities		
4.	Current Liabilities		
5.	Net Worth (1-3)		
6.	Net Working Capital (2-4)		

- B. The Net Financial Contracting Capacity (NFCC) based on the above data is computed as follows:

NFCC = 15 (current asset – current liabilities) minus value of all outstanding works under ongoing contracts including awarded contracts yet to be started

NFCC = P \_\_\_\_\_

Herewith attached are certified true copies of the income tax return and audited financial statement: stamped "RECEIVED" by the BIR or BIR authorized collecting agent for the immediately preceding year.

Submitted by:

\_\_\_\_\_

Name of Supplier / Distributor / Manufacturer

\_\_\_\_\_

Signature of Authorized Representative

Date : \_\_\_\_\_

## **Bid Securing Declaration Form**

*[shall be submitted with the Bid if bidder opts to provide this form of bid security]*

---

REPUBLIC OF THE PHILIPPINES)  
CITY OF \_\_\_\_\_) S.S.

**BID SECURING DECLARATION**  
**Project Identification No. 024-04-2025-INFRA-PB**  
**Construction / Improvement of Various Infrastructure Projects**  
**(Public Buildings & Other Infrastructure Projects)**  
**Various Barangays, Tabaco City**

To: **The City Government of Tabaco**  
Tabaco City

I/We, the undersigned, declare that:

1. I/We understand that, according to your conditions, bids must be supported by a Bid Security, which may be in the form of a Bid Securing Declaration.
2. I/We accept that: (a) I/we will be automatically disqualified from bidding for any procurement contract with any procuring entity for a period of two (2) years upon receipt of your Blacklisting Order; and, (b) I/we will pay the applicable fine provided under Section 6 of the Guidelines on the Use of Bid Securing Declaration, within fifteen (15) days from receipt of the written demand by the procuring entity for the commission of acts resulting to the enforcement of the bid securing declaration under Sections 23.1(b), 34.2, 40.1 and 69.1, except 69.1(f), of the IRR of RA No. 9184; without prejudice to other legal action the government may undertake.
3. I/We understand that this Bid Securing Declaration shall cease to be valid on the following circumstances:
  - a. Upon expiration of the bid validity period, or any extension thereof pursuant to your request;
  - b. I am/we are declared ineligible or post-disqualified upon receipt of your notice to such effect, and (i) I/we failed to timely file a request for reconsideration or (ii) I/we filed a waiver to avail of said right; and
  - c. I am/we are declared the bidder with the Lowest Calculated Responsive Bid, and I/we have furnished the performance security and signed the Contract.

IN WITNESS WHEREOF, I/We have hereunto set my/our hand/s this \_\_\_\_ day of [month] [year] at [place of execution].

*[Insert NAME OF BIDDER OR ITS AUTHORIZED REPRESENTATIVE]*

*[Insert signatory's legal capacity]*

Affiant

**[Jurat]**

*[Format shall be based on the latest Rules on Notarial Practice]*

Name of the Procuring Entity: LGU-Tabaco City

Contract ID No. 024-04-2025-INFRA-PB

Name of the Project: Construction / Improvement of Various Infrastructure Projects (Public Buildings & Other Infrastructure Projects)

Project Location: Various Barangays, Tabaco City

### QUALIFICATION OF KEY PERSONNEL PROPOSED TO BE ASSIGNED TO THE CONTRACT

Business Name : \_\_\_\_\_

Business Address: \_\_\_\_\_

		Project Manager	Project Engineer	Materials Engineer	Construction Foreman	Safety Officer	First Aider	Other positions deemed required by the Applicant for this project
1	Name							
2	Address							
3	Date of Birth							
4	Employed Since							
5	Experience							
6	Previous Employment							
7	Education							
8	PRC License							

Note: Attach individual resume and PRC License of the (professional) personnel

Submitted by : \_\_\_\_\_  
(Printed Name & Signature)

Designation : \_\_\_\_\_

Date : \_\_\_\_\_

Name of the Procuring Entity: LGU-Tabaco City

Contract ID No. 024-04-2025-INFRA-PB

Name of the Project: Construction / Improvement of Various Infrastructure Projects (Public Buildings & Other Infrastructure Projects)

Project Location: Various Barangays, Tabaco City

**List of Equipment, Owned or Leased and/or under Purchase Agreements, Pledged to the Proposed Contract**

Business Name : \_\_\_\_\_

Business Address: \_\_\_\_\_

Description	Quantity	Model/ Year	Capacity / Performance / Size	Plate No.	Motor No. / Body No.	Location	Condition	Proof of Ownership / Lessor or Vendor
<b>A. Owned</b>								
i.								
ii.								
iii.								
iv.								
v.								
<b>B. Leased</b>								
i.								
ii.								
iii.								
iv.								
v.								
<b>C. Under Purchase Agreements</b>								
i.								
ii.								
iii.								
iv.								

Submitted by : \_\_\_\_\_

(Printed Name & Signature)

Designation : \_\_\_\_\_

Date : \_\_\_\_\_



**Omnibus Sworn Statement (Revised)**  
*[shall be submitted with the Bid]*

---

REPUBLIC OF THE PHILIPPINES )  
CITY/MUNICIPALITY OF \_\_\_\_\_ ) S.S.

**AFFIDAVIT**

I, [Name of Affiant], of legal age, [Civil Status], [Nationality], and residing at [Address of Affiant], after having been duly sworn in accordance with law, do hereby depose and state that:

1. *[Select one, delete the other:]*

*[If a sole proprietorship:]* I am the sole proprietor or authorized representative of [Name of Bidder] with office address at [address of Bidder];

*[If a partnership, corporation, cooperative, or joint venture:]* I am the duly authorized and designated representative of [Name of Bidder] with office address at [address of Bidder];

2. *[Select one, delete the other:]*

*[If a sole proprietorship:]* As the owner and sole proprietor, or authorized representative of [Name of Bidder], I have full power and authority to do, execute and perform any and all acts necessary to participate, submit the bid, and to sign and execute the ensuing contract for [Name of the Project] of the [Name of the Procuring Entity], as shown in the attached duly notarized Special Power of Attorney;

*[If a partnership, corporation, cooperative, or joint venture:]* I am granted full power and authority to do, execute and perform any and all acts necessary to participate, submit the bid, and to sign and execute the ensuing contract for [Name of the Project] of the [Name of the Procuring Entity], as shown in the attached [state title of attached document showing proof of authorization (e.g., duly notarized Secretary's Certificate, Board/Partnership Resolution, or Special Power of Attorney, whichever is applicable)];

3. [Name of Bidder] is not "blacklisted" or barred from bidding by the Government of the Philippines or any of its agencies, offices, corporations, or Local Government Units, foreign government/foreign or international financing institution whose blacklisting rules have been recognized by the Government Procurement Policy Board, by itself or by relation, membership, association, affiliation, or controlling interest with another blacklisted person or entity as defined and provided for in the Uniform Guidelines on Blacklisting;

4. Each of the documents submitted in satisfaction of the bidding requirements is an authentic copy of the original, complete, and all statements and information provided therein are true and correct;

5. [Name of Bidder] is authorizing the Head of the Procuring Entity or its duly authorized representative(s) to verify all the documents submitted;

6. *[Select one, delete the rest:]*

*[If a sole proprietorship:]* The owner or sole proprietor is not related to the Head of the Procuring Entity, members of the Bids and Awards Committee (BAC), the Technical Working Group, and the BAC Secretariat, the head of the Project Management Office or the end-user unit, and the project consultants by consanguinity or affinity up to the third civil degree;

*[If a partnership or cooperative:]* None of the officers and members of [Name of Bidder] is related to the Head of the Procuring Entity, members of the Bids and Awards Committee (BAC), the Technical Working Group, and the BAC Secretariat, the head of the Project Management Office or the end-user unit, and the project consultants by consanguinity or affinity up to the third civil degree;

*[If a corporation or joint venture:]* None of the officers, directors, and controlling stockholders of [Name of Bidder] is related to the Head of the Procuring Entity, members of the Bids and Awards Committee (BAC),

the Technical Working Group, and the BAC Secretariat, the head of the Project Management Office or the end-user unit, and the project consultants by consanguinity or affinity up to the third civil degree;

7. *[Name of Bidder]* complies with existing labor laws and standards; and
8. *[Name of Bidder]* is aware of and has undertaken the responsibilities as a Bidder in compliance with the Philippine Bidding Documents, which includes:
  - a. Carefully examining all of the Bidding Documents;
  - b. Acknowledging all conditions, local or otherwise, affecting the implementation of the Contract;
  - c. Making an estimate of the facilities available and needed for the contract to be bid, if any; and
  - d. Inquiring or securing Supplemental/Bid Bulletin(s) issued for the *[Name of the Project]*.
9. *[Name of Bidder]* did not give or pay directly or indirectly, any commission, amount, fee, or any form of consideration, pecuniary or otherwise, to any person or official, personnel or representative of the government in relation to any procurement project or activity.
10. In case advance payment was made or given, failure to perform or deliver any of the obligations and undertakings in the contract shall be sufficient grounds to constitute criminal liability for Swindling (Estafa) or the commission of fraud with unfaithfulness or abuse of confidence through misappropriating or converting any payment received by a person or entity under an obligation involving the duty to deliver certain goods or services, to the prejudice of the public and the government of the Philippines pursuant to Article 315 of Act No. 3815 s. 1930, as amended, or the Revised Penal Code.

**IN WITNESS WHEREOF**, I have hereunto set my hand this \_\_\_ day of \_\_\_, 20\_\_ at \_\_\_\_\_, Philippines.

*[Insert NAME OF BIDDER OR ITS AUTHORIZED REPRESENTATIVE]*

*[Insert signatory's legal capacity]*  
Affiant

**[Jurat]**

*[Format shall be based on the latest Rules on Notarial Practice]*

## Bid Form for the Procurement of Infrastructure Projects

---

### BID FORM

Date : \_\_\_\_\_  
Project Identification No.: 024-04-2025-INFRA-PB

To: *[name and address of Procuring Entity]*

Having examined the Philippine Bidding Documents (PBDs) including the Supplemental or Bid Bulletin Numbers *[insert numbers]*, the receipt of which is hereby duly acknowledged, we, the undersigned, declare that:

- a. We have no reservation to the PBDs, including the Supplemental or Bid Bulletins, for the Procurement Project: *[insert name of contract]*;
- b. We offer to execute the Works for this Contract in accordance with the PBDs;
- c. The total price of our Bid in words and figures, excluding any discounts offered below is: *[insert information]*;
- d. The discounts offered and the methodology for their application are: *[insert information]*;
- e. The total bid price includes the cost of all taxes, such as, but not limited to: *[specify the applicable taxes, e.g. (i) value added tax (VAT), (ii) income tax, (iii) local taxes, and (iv) other fiscal levies and duties]*, which are itemized herein and reflected in the detailed estimates,
- f. Our Bid shall be valid within the a period stated in the PBDs, and it shall remain binding upon us at any time before the expiration of that period;
- g. If our Bid is accepted, we commit to obtain a Performance Security in the amount of *[insert percentage amount]* percent of the Contract Price for the due performance of the Contract, or a Performance Securing Declaration in lieu of the allowable forms of Performance Security, subject to the terms and conditions of issued GPPB guidelines<sup>1</sup> for this purpose;
- h. We are not participating, as Bidders, in more than one Bid in this bidding process, other than alternative offers in accordance with the Bidding Documents;
- i. We understand that this Bid, together with your written acceptance thereof included in your notification of award, shall constitute a binding contract between us, until a formal Contract is prepared and executed;
- j. We understand that you are not bound to accept the Lowest Calculated Bid or any other Bid that you may receive.
- k. We likewise certify/confirm that the undersigned, is the duly authorized representative of the bidder, and granted full power and authority to do, execute and perform any and all acts necessary to participate, submit the bid, and to sign and execute the ensuing contract for the [Name of Project] of the [Name of the Procuring Entity].
- l. We acknowledge that failure to sign each and every page of this Bid Form, including the Bill of Quantities, shall be a ground for the rejection of our bid.

Name: \_\_\_\_\_

Legal Capacity: \_\_\_\_\_

Signature: \_\_\_\_\_

Duly authorized to sign the Bid for and behalf of: \_\_\_\_\_

Date: \_\_\_\_\_

---

<sup>1</sup> currently based on GPPB Resolution No. 09-2020

Name of the Procuring Entity: LGU-Tabaco City

Contract ID No. 024-04-2025-INFRA-PB

Name of the Project: Construction / Improvement of Various Infrastructure Projects (Public Buildings & Other Infrastructure Projects)

Project Location: Various Barangays, Tabaco City

## BILL OF QUANTITIES

Item No.	Description of Work to be Done	Qty	Unit	Unit Price (Php)	Total Amount (Php)
<b>A</b>	<b>PUBLIC BUILDINGS</b>				
<b>1.</b>	<b>Construction of Multi-Purpose Hall at Tabiguian, Brgy. Tabiguian, Tabaco City</b>				
	<b>Part A</b>	<b>Earthworks</b>			
	1700	Clearing and Grubbing	273.76	sq.m.	
	803(1)a	Structure Excavation (Common Soil)	189.48	cu.m.	
	804(1)a	Embankment (From Structure Excavation)	146.88	cu.m.	
	804(1)b	Embankment (From Borrow)	222.20	cu.m.	
	804(4)	Gravel Fill	32.88	cu.m.	
	<b>Part B</b>	<b>Plain And Reinforced Concrete Works</b>			
	900(1)c1	Structural Concrete (Class A) 28 days	97.24	cu.m.	
	902(1)a	Reinforcing Steel (Deformed, Grade 40)	12,405.26	kgs	
	903(2)	Formworks and False Works	575.66	sq.m.	
	<b>Part C</b>	<b>Finishing And Other Civil Works</b>			
	1001(1)	Soil Poisoning	191.25	sq.m.	
	1001(5)a	Catch Basin (Concrete)	10.00	each	
	1001(8)	Sewer Line Works	1.00	l.s.	
	1001(9)	Storm Drainage and Downspout	1.00	l.s.	
	1014(1)b1	Prepainted Metal Sheets	183.60	sq.m.	
	1016(1)a	Waterproofing (Cement-Based)	87.21	sq.m.	
	1027(1)	Cement Plaster Finish	262.94	sq.m.	
	1027(2)	Cement Floor Finish	191.25	sq.m.	
	1046(2)a1	CHB Non Load Bearing, 100mm (Incl. RSB)	105.00	sq.m.	
	1046(2)a2	CHB Non Load Bearing, 150mm (Incl. RSB)	186.31	sq.m.	
	1047(8)	Structural Steel (Roof Framing)	1.00	l.s.	
	624 (1)	Electrical Works	1.00	l.s.	
	<b>Part D</b>	<b>Other General Requirements</b>			
	SPL 2	Bunkhouse and Other Facilities	1.00	l.s.	
	SPL 3	Project Billboard/Signboard	2.00	unit	
	B.7	Occupational Construction Safety and Health	1.00	l.s.	
		<i>Subtotal</i>			
<b>2</b>	<b>Construction of Health Center at Pinagbobong, Brgy. Pinagbobong, Tabaco City</b>				
	<b>Part A.</b>	<b>Earthworks</b>			
	101	Removal of Structures and Obstruction	3.45	cu.m.	
	803(1)a	Structural Excavation (Common Soil)	29.33	cu.m.	
	804(1)a	Backfilling of Excavated Materials	20.40	cu.m.	
	804(1)b	Embankment	3.45	cum	
	804(4)	Gravel Fill	1.91	cu.m.	
	<b>Part B</b>	<b>Plain And Reinforced Concrete Works</b>			
	900(1)c1	Structural Concrete (Class A) 28 days	40.92	cu.m.	
	902(1)a	Reinforcing Steel (Deformed, Grade 40)	6,577.67	kgs	
	903(2)	Formworks and False Works	325.15	sq.m.	

	<b>Part C</b>	<b>Finishing And Other Civil Works</b>				
	1001(5)b	Catch Basin (CHB)	4.00	ea.		
	1001(8)	Sewer Line Works	1.00	lot		
	1001(9)	Storm Drainage and Downspout	1.00	lot		
	1001(11)	Septic Vault	1.00	lot		
	1002(4)	Plumbing Fixtures	1.00	lot		
	1002(24)	Cold Water Lines	1.00	lot		
	1003	Carpentry and Joinery Works (Ceiling)	87.43	sq.m.		
	1010(2)a	Doors and Windows	41.03	sqm		
	1014(1)b1	Pre-Painted Metal Sheets	44.89	sq.m.		
	1016(1)a	Waterproofing (Cement-Base)	72.67	sq.m.		
	1018(2)	Tile Works	194.77	sq.m.		
	1027(1)	Cement Plaster Finish	815.32	sq.m.		
	1032(1)a	Painting Works (Masonry/Concrete)	831.68	sq.m.		
	1046(2)a1	CHB Non Load Bearing, 100mm (Incl. RSB)	66.61	sq.m.		
	1046(2)a2	CHB Non Load Bearing, 150mm (Incl. RSB)	199.68	sq.m.		
	1051	Railings	7.10	l.m		
	SPL-1	PWD Ramp	1.00	lot		
	<b>Part D</b>	<b>Electrical</b>				
	1100(10)	Conduits, Boxes & Fittings	1.00	lot		
	1101(42)	Wires and Wiring Devices	1.00	lot		
	1102(27)	Power Load Center, Switchgear and Panelboards	1.00	lot		
	1103(1)	Lighting & Fixture	1.00	lot		
	SPL-2	ACU Installation	1.00	lot		
	<b>Part E</b>	<b>Other Miscellaneous Works</b>				
	SPL-3	Furniture and Fixture	1.00	lot		
	SPL-4	Fabrication & Installation of Signages & Logo	1.00	lot		
	<b>Part F</b>	<b>Other General Requirements</b>				
	SPL-5	Provision of Bunkhouse (Rental Basis) & Other Facilities	1.00	lot		
	B.5	Project Billboard/Signboard	3.00	Unit		
	B.7(2)	Occupational Safety and Health Program	1.00	lot		
					<i>Subtotal</i>	
<b>3</b>	<b>Improvement of Evacuation Center &amp; Disaster Operation Center, Brgys. San Antonio &amp; Pawa, Tabaco City</b>					
	<b>I.</b>	<b>Improvement Evacuation Center, Brgy. San Antonio, Tabaco City</b>				
	<b>Part A</b>	<b>Earthworks</b>				
	801(1)	Clearing and Grubbing	184.90	sq.m.		
	803(1)a	Structure Excavation (Common Soil)	26.28	cu.m.		
	804(1)a	Embankment (From Structure Excavation)	20.27	cu.m.		
	804(4)	Gravel Fill	2.69	cu.m.		
	<b>Part B</b>	<b>Plain And Reinforced Concrete Works</b>				
	900(1)c1	Structural Concrete (Class A) 28 days	11.21	cu.m.		
	902(1)a	Reinforcing Steel (Deformed, Grade 40)	2,217.53	kgs		
	903(2)	Formworks and False Works	103.48	sq.m.		
	<b>Part C</b>	<b>Finishing And Other Civil Works</b>				
	624(8)	Solar LED Streetlight	4.00	unit		
	1009(1)a	Jalousie Windows (Glass)	1.80	sq.m.		
	1012(6)	Glass and Glazing	1.00	L.S.		
	1016(1)a	Waterproofing (Cement-Based)	810.00	sq.m.		
	1027(1)	Cement Plaster Finish	264.00	sq.m.		

	1046(2)a2	CHB Non Load Bearing, 150mm (Incl. RSB)	207.00	sq.m.		
	<b>II.</b>	<b>Improvement Of Disaster Operation Center, Brgy. Pawa, Tabaco City</b>				
	628(2)	Epoxy Coating on Crack	1.00	L.S.		
	801(1)	Removal of Structures and Obstruction	1.00	L.S.		
	1001(9)	Storm Drainage and Downspout	1.00	L.S.		
	1013(1)	Ceiling (4.5mm, Metal Frame, Fiber Cement Board)	42.74	sq.m.		
	1013(1)	Corrugated Metal Roofing	18.84	sq.m.		
	1016(1)a	Waterproofing (Cement-based)	47.53	sq.m.		
	1027(1)	Cement Plaster Finish	10.60	sq.m.		
	1032(1)a	Painting Works	53.34	sq.m.		
	1036(1)b	Polycarbonate Panels	81.90	sq.m.		
	1046(2)a1	CHB Non Load Bearing, 150mm (Incl. RSB)	5.30	sq.m.		
	1047(1)	Structural Steel	1.00	L.S.		
	1100(10)	Conduits, Boxes and Fittings	1.00	L.S.		
	1101	Wires and Wiring Devices	1.00	L.S.		
	1103	Lighting Fixtures and Lamp	1.00	L.S.		
	<b>III.</b>	<b>Other General Requirements</b>				
	SPL 1	Bunkhouse and Other Facilities	1.00	L.S.		
	SPL 2	Project Billboard/Signboard	4.00	unit		
	B.7	Occupational Construction Safety and Health	1.00	L.S.		
					<i>Subtotal</i>	
<b>4</b>	<b>Construction of Evacuation Center, Brgy. Buang, Tabaco City</b>					
	<b>Part A</b>	<b>Earthworks</b>				
	803(1)a	Structures Excavation (Common Soil)	277.07	cu.m.		
	804(1)a	Embankment (from Structure Excavation)	233.48	cu.m.		
	804(1)b	Embankment (from Common Borrow)	152.27	cu.m.		
	804(4)	Gravel Fill	16.19	cu.m.		
	<b>Part B</b>	<b>Plain And Reinforced Concrete Works</b>				
	900(1)c1	Structural Concrete (Class A) 28 days	127.87	cu.m.		
	902(1)a	Reinforcing Steel (Deformed , Grade 40)	22,640.34	kgs		
	903(2)	Formworks and False Works	835.71	sq.m.		
	<b>Part C</b>	<b>Finishing And Other Civil Works</b>				
	1000(1)	Soil Poisoning	305.00	sq.m.		
	1001(5)b	Catch Basin (CHB)	8.00	each		
	1001(11)	Septic Vault	1.00	l.s		
	1001(9)	Storm Drainage and Downspout	1.00	l.s		
	1001(8)	Sewer Line Works	1.00	l.s		
	1002(4)	Plumbing Fixtures	1.00	l.s		
	1002(24)	Cold Water Lines	1.00	l.s		
	1046(2)a2	CHB Non Loading Bearing, 150mm (incl. RSB)	585.28	sq.m.		
	1005 (7)	Louver Window	10.20	sq.m.		
	1027(1)	Cement Plaster Finish	1,249.42	sq.m.		
	1021(1)	Cement Floor Finish	92.19	sq.m.		
	1018(2)	Unglazed Tiles	169.44	sq.m.		
	1018(5)	Glazed Tiles	47.04	sq.m.		
	1018	Tactiles (PWD Ramp)	10.47	sq.m.		
	1006(1)	Steel Door and Frames	12.60	sq.m.		
	1006(2)	Hollow Core Flush Door	12.81	sq.m.		
	1009(1)b	Jalousie Windows (Wood)	20.30	sq.m.		
	1005	Steel Window (Security Grilles)	30.46	sq.m.		
	1051	Railings	36.15	LM		

	1003(1)c2	Ceiling Works (Metal Frame on Marine Plywood)	180.84	sq.m.		
	1032(1)	Painting Works (Masonry / Concrete)	1,363.40	sq.m.		
	1032(2)	Painting Works (Wooden Surfaces)	180.84	sq.m.		
	1016(1)a	Waterproofing (Cement-Base)	278.26	sq.m.		
	<b>Part D</b>	<b>Electrical Works</b>				
	1100(10)	Conduits, Boxes & Fittings	1.00	l.s		
	1101	Wires and Wiring Devices	1.00	l.s		
	1102(1)	Panelboard with Main & Branch Breakers	1.00	l.s		
	1103(1)	Lighting Fixtures & Lamps	1.00	l.s		
	1109(1)	Grounding System	1.00	l.s		
	<b>Part E</b>	<b>Mechanical Works</b>				
	1200(2)a	Oscillating (Stand Fan)	8.00	set		
	1200(2)b	Oscillating (Wall Fan)	1.00	set		
	1208	Fire Alarm System	1.00	l.s		
	<b>Part F</b>	<b>Other Miscellaneous Works</b>				
	SPL 1	Fabrication & Installation of Signages & Logo / Building Marker	1.00	l.s		
	<b>Part G</b>	<b>Other General Requirements</b>				
	SPL 2	Bunkhouse (Rental Basis) and Other Facilities	1.00	l.s		
	SPL 3	Project Billboard/Signboard	3.00	unit		
	SPL 4	Occupational Construction Safety and Health	1.00	l.s		
					<i>Subtotal</i>	
<b>5</b>	<b>Construction of Child Development Center, Brgy. Buhian, Tabaco City</b>					
	<b>Part A</b>	<b>Earthworks</b>				
	1700	Clearing and Grubbing	112.80	sq.m.		
	803(1)a	Structure Excavation (Common Soil)	77.92	cu.m.		
	804(1)a	Embankment (From Structure Excavation)	66.05	cu.m.		
	804(1)b	Embankment (From Borrow)	39.00	cu.m.		
	804(4)	Gravel Fill	13.28	cu.m.		
	<b>Part B</b>	<b>Plain And Reinforced Concrete Works</b>				
	900(1)c1	Structural Concrete (Class A) 28 days	43.06	cu.m.		
	902	Reinforcing Steel (Deformed)	7,544.47	kgs		
	903(2)	Formworks and False Works	198.86	sq.m.		
	<b>Part C</b>	<b>Finishing And Other Civil Works</b>				
	1000(1)	Soil Poisoning	118.00	sq.m.		
	1001(5)b	Catch Basin (CHB)	5.00	each		
	1001(11)	Septic Tank	1.00	l.s		
	1001(8)	Sewer Line Works	1.00	l.s		
	1001(9)	Storm Drainage and Downspout	1.00	l.s		
	1002(4)	Plumbing Works	1.00	l.s		
	1003(1)b1	Ceiling (4.5mm, Metal Frame, Fiber Cement Board)	70.48	sq.m.		
	1005	Steel Windows	14.43	sq.m.		
	1010(2)a	Doors (Wooden Panel / Flush)	5.46	sq.m.		
	SPL-1	Doors and Window Screen	18.63	sq.m.		
	1016(1)a	Waterproofing (Cement-Base)	112.38	sq.m.		
	1018(2)	Unglazed Tiles	6.38	sq.m.		
	1018(5)	Glazed Tiles	27.47	sq.m.		
	SPL-2	Tactiles (PWD Ramp)	7.56	sq.m.		
	1027(1)	Cement Plaster Finish	445.32	sq.m.		
	1021	Cement Floor Finish	90.35	sq.m.		
	1046(2)a1	CHB Non Load Bearing, 100mm (Incl. RSB)	19.11	sq.m.		

	1046(2)a2	CHB Non Load Bearing, 150mm (Incl. RSB)	171.15	sq.m.		
	1051	Railings	66.30	LM		
	1003	Carpentry Works	33.93	sq.m.		
	1032	Painting Works	547.63	sq.m.		
	<b>Part D</b>	<b>Electrical Works</b>				
	1100(10)	Conduits, Boxes & Fittings	1.00	l.s.		
	1101	Wires and Wiring Devices	1.00	l.s.		
	1102(1)	Panelboard with Main & Brain Breakers	1.00	l.s.		
	1103(1)	Lighting Fixtures & Lamps	1.00	l.s.		
	1109(1)	Grounding System	1.00	l.s.		
	<b>Part E</b>	<b>Other Miscellaneous Works</b>				
	1208	Fire Alarm System	1.00	l.s.		
	SPL-2	Fabrication & Installation of Signages & Logo	1.00	l.s.		
	SPL-3	Handwash Area	1.00	l.s.		
	SPL-4	Aluminum Cabinet	2.73	sq.m.		
	<b>Part D</b>	<b>Other General Requirements</b>				
	SPL-5	Bunkhouse and Other Facilities	1.00	l.s.		
	SPL-6	Project Billboard/Signboard	3.00	unit		
	B.7	Occupational Construction Safety and Health	1.00	l.s.		
						<i>Subtotal</i>
<b>6</b>	<b>Construction of Child Development Center, Sitio Malictay, Brgy. Hacienda, San Miguel Island, Tabaco City</b>					
	<b>Part A</b>	<b>Earthworks</b>				
	100	Clearing and Grubbing	112.80	sq.m.		
	803(1)a	Structure Excavation (Common Soil)	77.92	cu.m.		
	804(1)a	Embankment (From Structure Excavation)	27.05	cu.m.		
	804(1)b	Embankment (From Borrow)	44.75	cu.m.		
	804(4)	Gravel Fill	13.28	cu.m.		
	<b>Part B</b>	<b>Plain And Reinforced Concrete Works</b>				
	900(1)c1	Structural Concrete (Class A) 28 days	43.06	cu.m.		
	902	Reinforcing Steel (Deformed)	7,544.47	kgs		
	903(2)	Formworks and False Works	198.86	sq.m.		
	<b>Part C</b>	<b>Finishing And Other Civil Works</b>				
	1000(1)	Soil Poisoning	118.00	liters		
	1001(5)a	Catch Basin (Concrete)	5.00	each		
	1001(5)b	Septic Tank	1.00	l.s.		
	1001(8)	Sewer Line Works	1.00	l.s.		
	1001(9)	Storm Drainage and Downspout	1.00	l.s.		
	1002(4)	Plumbing Works	1.00	l.s.		
	1003(1)b1	Ceiling (4.5mm, Metal Frame, Fiber Cement Board)	70.48	sq.m.		
	1005	Steel Windows	14.43	sq.m.		
	1010(2)a	Doors (Wooden Panel / Flush)	5.46	sq.m.		
	SPL-1	Doors and Window Screen	18.63	sq.m.		
	1016(1)a	Waterproofing (Cement-Base)	112.38	sq.m.		
	1018(2)	Unglazed Tiles	6.38	sq.m.		
	1018(5)	Glazed Tiles	27.47	sq.m.		
	SPL-2	Tactiles (PWD Ramp)	7.56	sq.m.		
	1027(1)	Cement Plaster Finish	445.32	sq.m.		
	1021	Cement Floor Finish	90.35	sq.m.		
	1046(2)a1	CHB Non Load Bearing, 100mm (Incl. RSB)	19.11	sq.m.		
	1046(2)a2	CHB Non Load Bearing, 150mm (Incl. RSB)	175.35	sq.m.		



	1051	Railings	66.30	LM		
	1003	Carpentry Works	33.93	sq.m.		
	1032	Painting Works	547.63	sq.m.		
	<b>Part D</b>	<b>Electrical Works</b>				
	1100(10)	Conduits, Boxes & Fittings	1.00	l.s.		
	1101	Wires and Wiring Devices	1.00	l.s.		
	1102(1)	Panelboard with Main & Brain Breakers	1.00	l.s.		
	1103(1)	Lighting Fixtures & Lamps	1.00	l.s.		
	1109(1)	Grounding System	1.00	l.s.		
	<b>Part E</b>	<b>Other Miscellaneous Works</b>				
	1208	Fire Alarm System	1.00	l.s.		
	SPL-3	Fabrication & Installation of Signages & Logo	1.00	l.s.		
	SPL-4	Handwash Area	1.00	l.s.		
	SPL-5	Aluminum Cabinet	2.73	sq.m.		
	<b>Part D</b>	<b>Other General Requirements</b>				
	SPL-6	Bunkhouse and Other Facilities	1.00	l.s.		
	SPL-7	Project Billboard/Signboard	3.00	unit		
	B.7	Occupational Construction Safety and Health	1.00	l.s.		
					<i>Subtotal</i>	
<b>B</b>	<b>OTHER INFRASTRUCTURE PROJECTS</b>					
<b>7</b>	<b>Desilting / Dredging of Tagas River, Cobo-Baranghawon Section (Upstream of Basud Bridge), Tabaco City</b>					
	SPL-1	Clearing & Deepening of Waterways	14,175.16	cu.m		
	SPL-2	Removal & Disposal of Silted Materials	5,670.06	cu.m		
	SPL-3	Fab/Installation of Billboard	2.00	unit		
	SPL-4	Occupational Construction Safety and Health	1.00	l.s		
					<i>Subtotal</i>	
<b>8</b>	<b>Construction of Water Supply System, Brgy. San Vicente, Tabaco City</b>					
	<b>I.</b>	<b>Construction of Perimeter Fence and Pump Control Room</b>				
	803(1)a	Structure Excavation (Common Soil)	49.67	cu.m.		
	804(1)a	Embankment (From Structural Excavation)	36.47	cu.m.		
	804(4)	Gravel Bedding	7.67	cu.m.		
	900(1)c1	Structural Concrete	22.99	cu.m.		
	902(1)a	Reinforcing Steel (Deformed, Grade 40)	2,102.15	kgs		
	903(2)	Formworks and Falseworks	194.09	sq.m		
	1001 (5)b	Catch Basin (CHB)	3.00	each		
	1001 (9)	Storm Drainage and Downspout	1.00	L.S.		
	1005(1)	Residential Casement (Steel)	3.60	sq.m.		
	1010(2)b	Doors (Wood Panel)	3.36	sq.m.		
	1027(1)	Cement Plaster Finish	112.60	sq.m		
	1032(1)a	Painting Works (Masonry/Concrete)	74.60	sq.m		
	1046(2)a2	CHB Non Load Bearing, 100mm (Incl. RSB)	122.16	sq.m		
	1047(1)	Structural Steel	1.00	L.S.		
	<b>II.</b>	<b>Other Miscellaneous Works</b>				
	A.	Electro-Mechanical Components	1.00	lot		
	B.	Transmission Line	1.00	lot		
	C.	Electrical Works	1.00	lot		
	<b>III.</b>	<b>Other General Requirements</b>				
	SPL 1	Provision of Bunkhouse (Rental Basis) & Other Facilities	1.00	L.S		

	B.7(2)	Occupational Safety and Health Program	1.00	L.S		
	B.5	Project Billboard/Signboard	2.00	unit		
	<i>Subtotal</i>					
	<i>Grand Total</i>					

<b>Name of the Company/Bidder</b>	<b>Name of Authorized Representative</b>	<b>Signature of Authorized Representative</b>

Name of the Procuring Entity: LGU-Tabaco City

Contract ID No. 024-04-2025-INFRA-PB

Name of the Project: Construction / Improvement of Various Infrastructure Projects (Public Buildings & Other Infrastructure Projects)

Project Location: Various Barangays, Tabaco City

Contract Name : \_\_\_\_\_

Location : \_\_\_\_\_

### CASH FLOW BY QUARTER AND PAYMENT SCHEDULE

PARTICULAR	% WT.	1ST QUARTER	2ND QUARTER	3RD QUARTER	4TH QUARTER
ACCOMPLISHMENT					
CASH FLOW					
CUMULATIVE ACCOMPLISHMENT					
CUMULATIVE CASH FLOW					

Submitted by:

Name of the Representative of the Bidder : \_\_\_\_\_

Name of the Bidder: \_\_\_\_\_

Position : \_\_\_\_\_

Date \_\_\_\_\_

## Contract Agreement Form for the Procurement of Infrastructure Projects (Revised)

*[not required to be submitted with the Bid, but it shall be submitted within ten (10) days after receiving the Notice of Award]*

---

### CONTRACT AGREEMENT

THIS AGREEMENT, made this *[insert date]* day of *[insert month]*, *[insert year]* between *[name and address of PROCURING ENTITY]* (hereinafter called the “Entity”) and *[name and address of Contractor]* (hereinafter called the “Contractor”).

WHEREAS, the Entity is desirous that the Contractor execute *[name and identification number of contract]* (hereinafter called “the Works”) and the Entity has accepted the Bid for *[contract price in words and figures in specified currency]* by the Contractor for the execution and completion of such Works and the remedying of any defects therein.

NOW THIS AGREEMENT WITNESSETH AS FOLLOWS:

1. In this Agreement, words and expressions shall have the same meanings as are respectively assigned to them in the Conditions of Contract hereinafter referred to.
2. The following documents as required by the 2016 revised Implementing Rules and Regulations of Republic Act No. 9184 shall be deemed to form and be read and construed as part of this Agreement, *viz.*:

- a. Philippine Bidding Documents (PBDs);
  - i. Drawings/Plans;
  - ii. Specifications;
  - iii. Bill of Quantities;
  - iv. General and Special Conditions of Contract;
  - v. Supplemental or Bid Bulletins, if any;
- b. Winning bidder’s bid, including the Eligibility requirements, Technical and Financial Proposals, and all other documents or statements submitted;

Bid form, including all the documents/statements contained in the Bidder’s bidding envelopes, as annexes, and all other documents submitted (*e.g.*, Bidder’s response to request for clarifications on the bid), including corrections to the bid, if any, resulting from the Procuring Entity’s bid evaluation;

- c. Performance Security;
  - d. Notice of Award of Contract and the Bidder’s conforme thereto; and
  - e. Other contract documents that may be required by existing laws and/or the Procuring Entity concerned in the PBDs. **Winning bidder agrees that additional contract documents or information prescribed by the GPPB that are subsequently required for submission after the contract execution, such as the Notice to Proceed, Variation Orders, and Warranty Security, shall likewise form part of the Contract.**
3. In consideration for the sum of *[total contract price in words and figures]* or such other sums as may be ascertained, *[Named of the bidder]* agrees to *[state the object of the contract]* in accordance with his/her/its Bid.

4. The *[Name of the procuring entity]* agrees to pay the above-mentioned sum in accordance with the terms of the Bidding.

IN WITNESS whereof the parties thereto have caused this Agreement to be executed the day and year first before written.

*[Insert Name and Signature]*

*[Insert Name and Signature]*

*[Insert Signatory's Legal Capacity]*

*[Insert Signatory's Legal Capacity]*

*for:*

*for:*

*[Insert Procuring Entity]*

*[Insert Name of Supplier]*

**Acknowledgment**

*[Format shall be based on the latest Rules on Notarial Practice]*

**THE FOLLOWING PAGES ARE THE  
MARKINGS FOR EACH ENVELOPE:**

**3 Copies: Original, Copy 1 and Copy 2**

*(COPY & PASTE in the envelopes.  
Edit ONLY the Name and Address of the Bidder)*

**NAME OF THE CONTRACTOR**  
**ADDRESS OF THE CONTRACTOR**

**ATTY. JOVITO BRON CODERIS, JR.**  
**BAC CHAIRMAN**  
**LGU-TABACO CITY**

**ORIGINAL - TECHNICAL COMPONENT**

**Construction / Improvement of Various Infrastructure Projects**  
**(Public Buildings & Other Infrastructure Projects)**  
**Various Barangays, Tabaco City**  
**Contract ID No. 024-04-2025-INFRA-PB**

**DO NOT OPEN BEFORE MAY 20, 2025, 9:30AM**

NAME OF THE CONTRACTOR  
ADDRESS OF THE CONTRACTOR

**ATTY. JOVITO BRON CODERIS, JR.**  
**BAC CHAIRMAN**  
**LGU-TABACO CITY**

**ORIGINAL – FINANCIAL COMPONENT**

**Construction / Improvement of Various Infrastructure Projects**  
**(Public Buildings & Other Infrastructure Projects)**  
**Various Barangays, Tabaco City**  
**Contract ID No. 024-04-2025-INFRA-PB**

**DO NOT OPEN BEFORE MAY 20, 2025, 9:30AM**



NAME OF THE CONTRACTOR  
ADDRESS OF THE CONTRACTOR

**ATTY. JOVITO BRON CODERIS, JR.**  
**BAC CHAIRMAN**  
**LGU-TABACO CITY**

**ORIGINAL BID**

**Construction / Improvement of Various Infrastructure Projects**  
**(Public Buildings & Other Infrastructure Projects)**  
**Various Barangays, Tabaco City**  
**Contract ID No. 024-04-2025-INFRA-PB**

**DO NOT OPEN BEFORE MAY 20, 2025, 9:30AM**

NAME OF THE CONTRACTOR  
ADDRESS OF THE CONTRACTOR

**ATTY. JOVITO BRON CODERIS, JR.**  
**BAC CHAIRMAN**  
**LGU-TABACO CITY**

**COPY NO. 1 - TECHNICAL COMPONENT**

**Construction / Improvement of Various Infrastructure Projects  
(Public Buildings & Other Infrastructure Projects)  
Various Barangays, Tabaco City  
Contract ID No. 024-04-2025-INFRA-PB**

**DO NOT OPEN BEFORE MAY 20, 2025, 9:30AM**

NAME OF THE CONTRACTOR  
ADDRESS OF THE CONTRACTOR

**ATTY. JOVITO BRON CODERIS, JR.**  
**BAC CHAIRMAN**  
**LGU-TABACO CITY**

**COPY NO. 1 – FINANCIAL COMPONENT**

**Construction / Improvement of Various Infrastructure Projects**  
**(Public Buildings & Other Infrastructure Projects)**  
**Various Barangays, Tabaco City**  
**Contract ID No. 024-04-2025-INFRA-PB**

**DO NOT OPEN BEFORE MAY 20, 2025, 9:30AM**

**NAME OF THE CONTRACTOR**  
**ADDRESS OF THE CONTRACTOR**

**ATTY. JOVITO BRON CODERIS, JR.**  
**BAC CHAIRMAN**  
**LGU-TABACO CITY**

**COPY NO. 1**

**Construction / Improvement of Various Infrastructure Projects**  
**(Public Buildings & Other Infrastructure Projects)**  
**Various Barangays, Tabaco City**  
**Contract ID No. 024-04-2025-INFRA-PB**

**DO NOT OPEN BEFORE MAY 20, 2025, 9:30AM**

NAME OF THE CONTRACTOR  
ADDRESS OF THE CONTRACTOR

**ATTY. JOVITO BRON CODERIS, JR.**  
**BAC CHAIRMAN**  
**LGU-TABACO CITY**

**COPY NO. 2 - TECHNICAL COMPONENT**

**Construction / Improvement of Various Infrastructure Projects**  
**(Public Buildings & Other Infrastructure Projects)**  
**Various Barangays, Tabaco City**  
**Contract ID No. 024-04-2025-INFRA-PB**

**DO NOT OPEN BEFORE MAY 20, 2025, 9:30AM**

NAME OF THE CONTRACTOR  
ADDRESS OF THE CONTRACTOR

**ATTY. JOVITO BRON CODERIS, JR.**  
**BAC CHAIRMAN**  
**LGU-TABACO CITY**

**COPY NO. 2 – FINANCIAL COMPONENT**

**Construction / Improvement of Various Infrastructure Projects**  
**(Public Buildings & Other Infrastructure Projects)**  
**Various Barangays, Tabaco City**  
**Contract ID No. 024-04-2025-INFRA-PB**

**DO NOT OPEN BEFORE MAY 20, 2025, 9:30AM**

**NAME OF THE CONTRACTOR**  
**ADDRESS OF THE CONTRACTOR**

**ATTY. JOVITO BRON CODERIS, JR.**  
**BAC CHAIRMAN**  
**LGU-TABACO CITY**

**COPY NO. 2**

**Construction / Improvement of Various Infrastructure Projects**  
**(Public Buildings & Other Infrastructure Projects)**  
**Various Barangays, Tabaco City**  
**Contract ID No. 024-04-2025-INFRA-PB**

**DO NOT OPEN BEFORE MAY 20, 2025, 9:30AM**

NAME OF THE CONTRACTOR  
ADDRESS OF THE CONTRACTOR

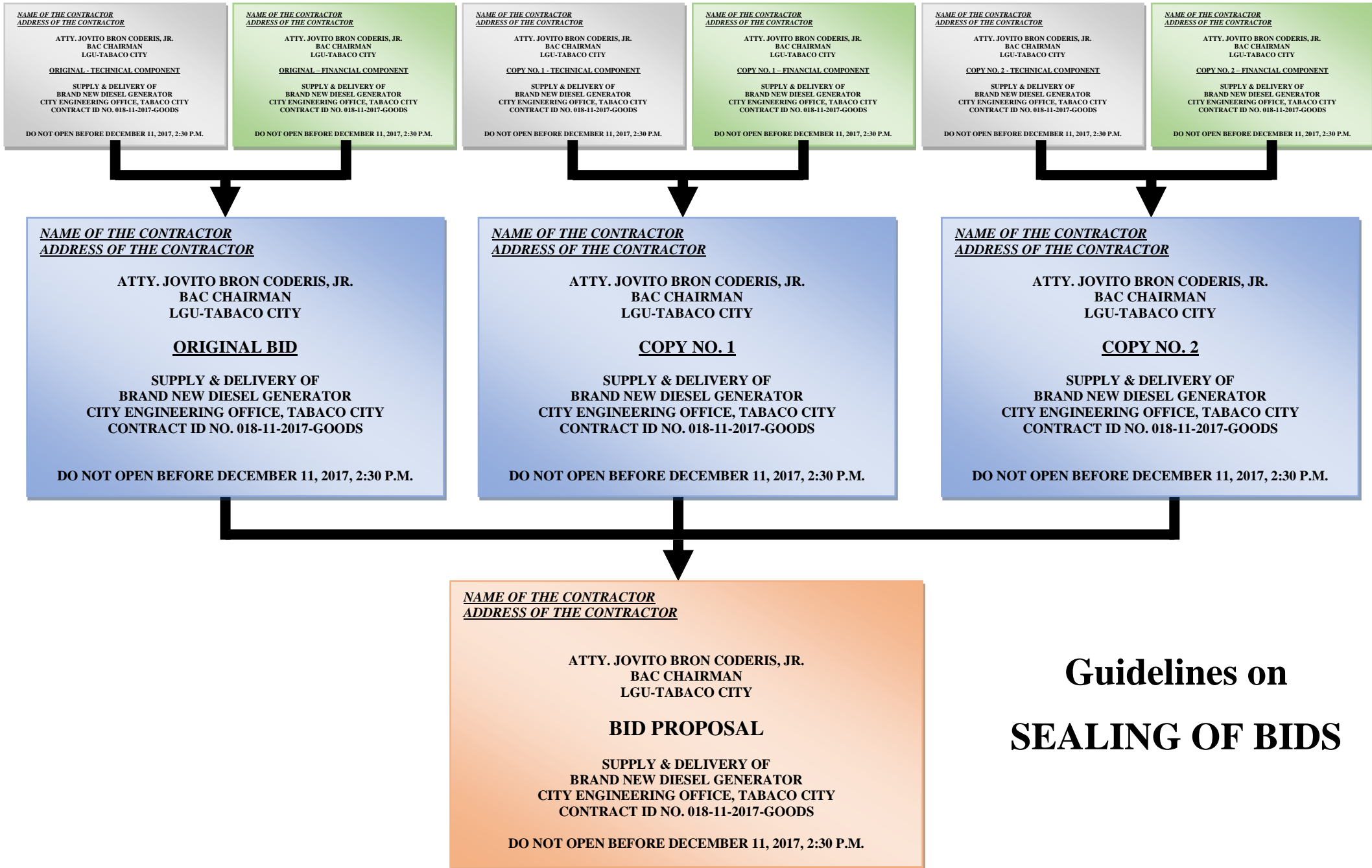
ATTY. JOVITO BRON CODERIS, JR.  
BAC CHAIRMAN  
LGU-TABACO CITY

# **BID PROPOSAL**

**Construction / Improvement of Various Infrastructure Projects  
(Public Buildings & Other Infrastructure Projects)  
Various Barangays, Tabaco City  
Contract ID No. 024-04-2025-INFRA-PB**

**DO NOT OPEN BEFORE MAY 20, 2025, 9:30AM**





# Guidelines on SEALING OF BIDS

