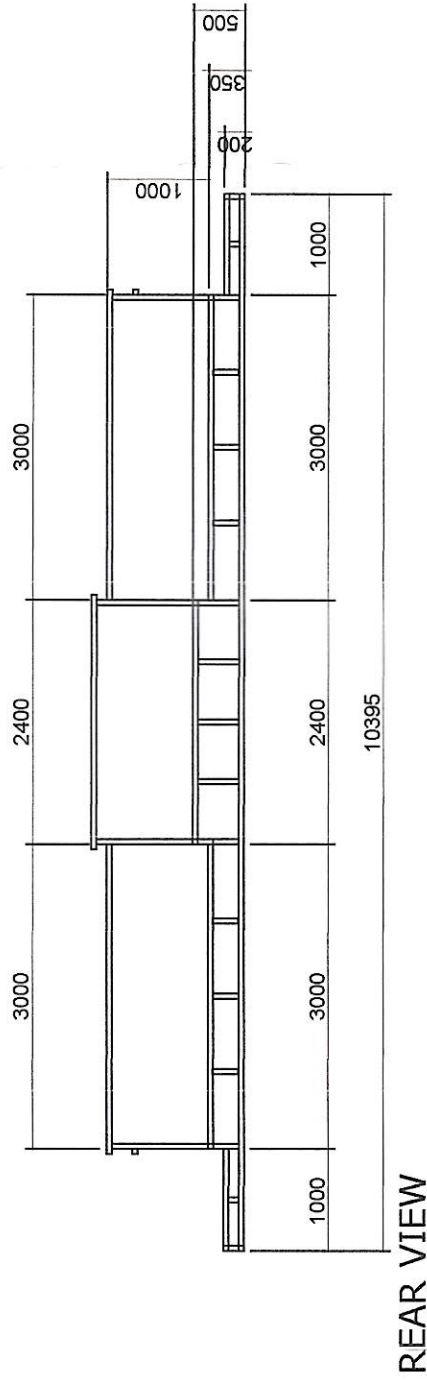
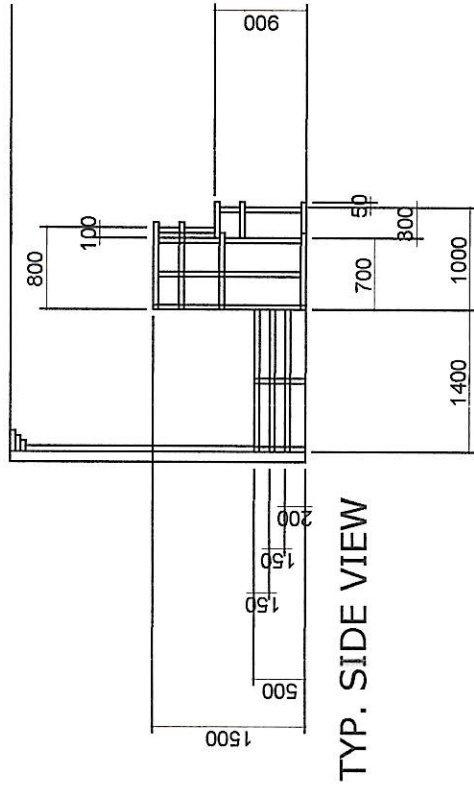
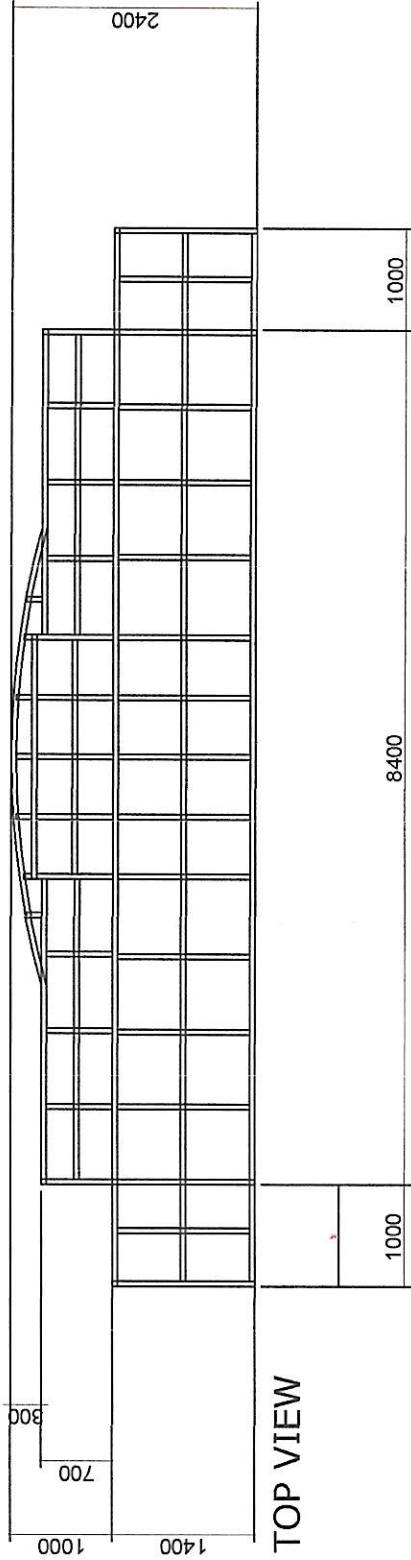


SPECIFICATION:

STEEL PLATFORM

- USE: 4"x4"x4mmx6.0m - TUBULAR PIPES
- 2"x4"x4mmx6.0m - TUBULAR PIPES
- 5mmx30cmx30cm - BASE PLATE
- 10mm - EXPANSION BOLT
- 2"x2"x $\frac{1}{4}$ " - ANGLE BAR
- 2mmx2"x6.0m - FLAT BAR
- 4'x8'x8mm - SUNTECH PP BOARD



PRESIDING AREA DETAIL PLAN

SCALE 1:100 METS

<p>REPUBLIC OF THE PHILIPPINES LOCAL GOVERNMENT UNIT OF TABACO TABACO CITY-ALBAY</p> <p>OFFICE OF THE CITY ARCHITECT/ OFFICE OF THE CITY ENGINEER</p> <p>Ground Floor, City Hall Annex Building, Tabaco City-4511</p>	<p>PROJECT TITLE: FABRICATION AND INSTALLATION OF FURNITURE AND FIXTURE AT LEGISLATIVE BUILDING</p> <p>LOCATION: LEGISLATIVE BLDG. KARANGAHAN, TABACO CITY</p>	<p>PREPARED BY: DAN ANTHONY B. BURBOD JOB ORDER - CEO CAD</p>	<p>CHECKED & REVIEWED BY: DINDO B. BONGALOSA CITY ENGINEER</p>	<p>RECOMMENDING APPROVAL BY: BABY GLENCOR ONG BONGAO CITY ASSESSOR</p>	<p>APPROVED BY: HON. REYNALDO B. BRAGAIS CITY MAYOR</p>	<p>CONTROL NO.</p> <p>SHEET NO.</p> <p>6 7</p>
---	---	--	---	---	--	--